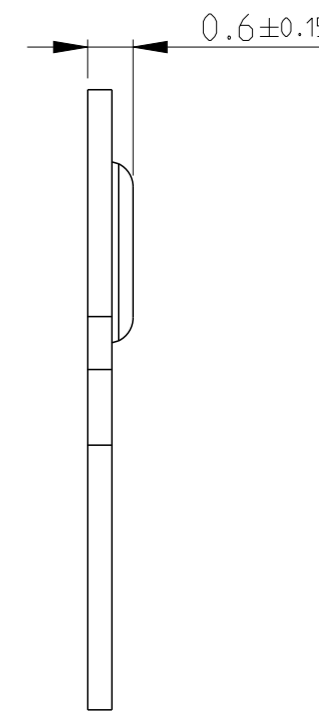
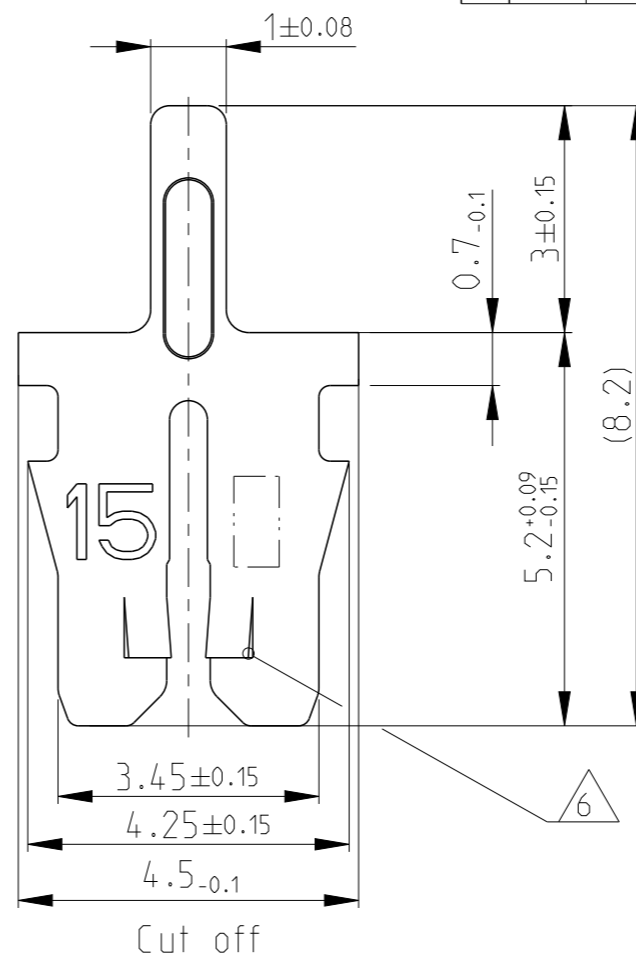
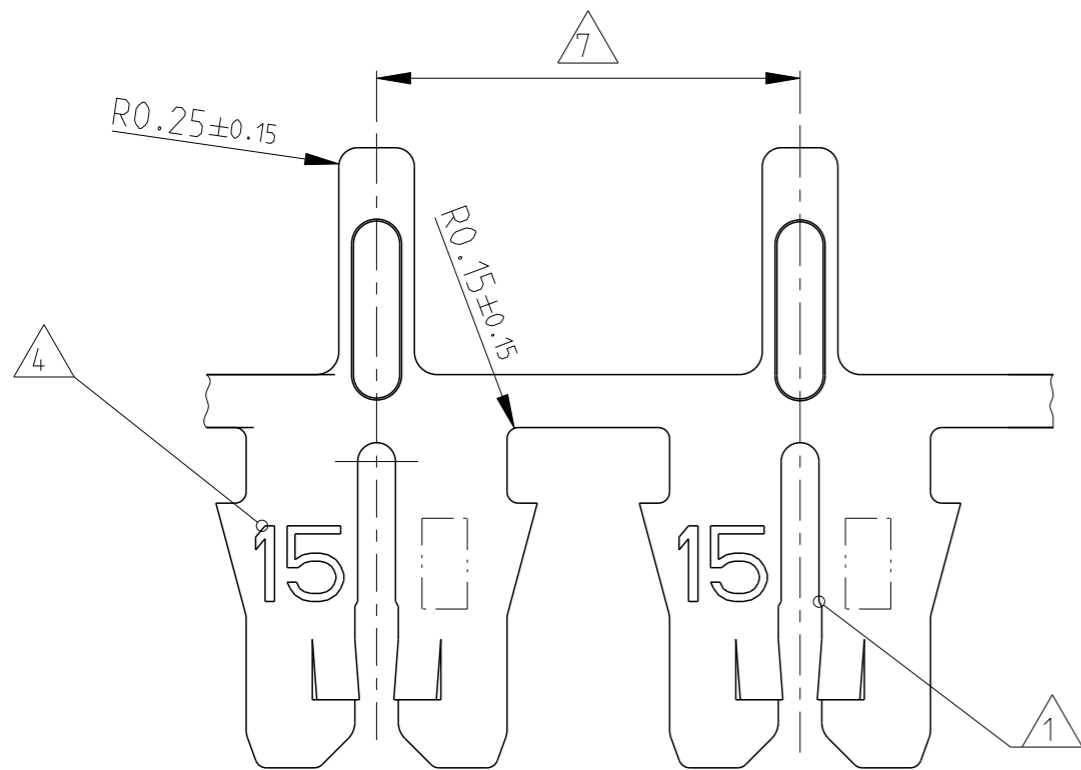


LOC  
A1

DIST  
-

REVISIONS

P	LTR	DESCRIPTION	DATE	DWN	APVD
	A	INITIAL RELEASE	30JUN2011	PKS	RRP
	A1	ECR-14-003077	28FEB2014	PKS	RRP
	A2	ECR-14-009219	19JUN2014	PKS	RRP
	A3	REVISED PER ECR-22-157584	02NOV2022	PC	TD

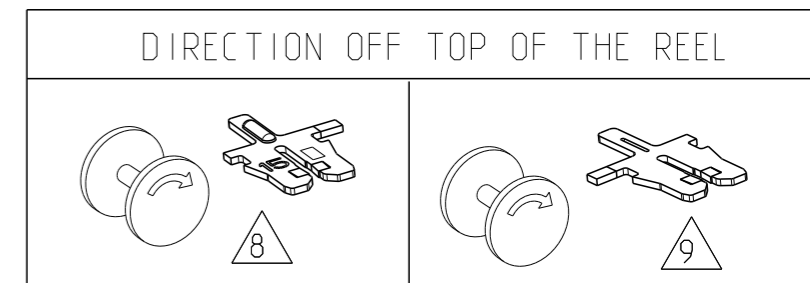


NOTES

- 1 Geeignet fuer Kupferlackdraht  $\varnothing 0.63...0.81\text{mm}$   
Einzeldraht oder zwei Draehnte gleichen Durchmessers  
SLOT ACCEPTS:  
SINGLE OR DOUBLE MAGNET WIRE  
SAME DIAMETERS 0.63...0.81mm DIA
- 2 Anlieferungszustand: Kontakte fortlaufend mit  
Papierzwiseinlage auf Kunststoffspule aufgewickelt  
Max. 5 Splice Stellen pro Spule  
Splice Stellen nicht miteinander verbunden  
DELIVERYSTATE: CONTACTS CONTINUOUS REELED WITH PAPER  
INTERLAYER ON PLASTIC-REEL.  
MAX. 5 SPLICES PER REEL  
SPLICES BE NOT BONDED TOGETHER.
- 3 Kontaktkammer nach Zeichnung } 411-18516  
CAVITY ACCORDING DWG.
- 4 Kennziffer fuer Drahtgroessenbereich (15)  
IDENTIFICATION NO. FOR MAGNET WIRE RANGE (15)
- 5 Materialdicke }  $0.32 \pm 0.02$   
STOCK THICKNESS
- 6 Materialdicke an den Stripping shoulders ist  $0.32^{+0.04}$   
STOCK THICKNESS AT THE STRIPPING SHOULDERS IS  $0.32^{+0.04}$
- 7 DIE FEED  $5.6 \pm 0.05$

8 PRELIMINARY PART-NOT RELEASED FOR PRODUCTION.

TE PART NO	REV.	MATERIAL	SURFACE COLOR	DESCRIPTION	REELING
1740829-3	1	CuNiSi	POST TIN OVER NICKEL	MAG-MATE .300 mod.	8
1740829-2	A	CuSn	PRETINNED	MAG-MATE .300 mod.	9
1740829-1	A	CuSn	PRETINNED	MAG-MATE .300 mod.	8



THIS DRAWING IS A CONTROLLED DOCUMENT.

DWN SENTHIL 30JUN2011  
CHK SENTHIL 30JUN2011  
APVD RAJENDRA 01JUL2011

TE Connectivity

MAG-MATE Kontakt mit Loetpin

SIZE A3 CAGE CODE 00779 DRAWING NO C-1740829 RESTRICTED TO -

Customer Drawing SCALE 10:1 SHEET 1 OF 1 REV A3

DIMENSIONS: mm	TOLERANCES UNLESS OTHERWISE SPECIFIED: 0 PLC } $\pm$ 1 PLC } $\pm$ 2 PLC } $0.2$ 3 PLC } $\pm$ 4 PLC } $\pm$ ANGLES } $\pm 1^\circ$ FINISH } -
MATERIAL SEE TABLE	