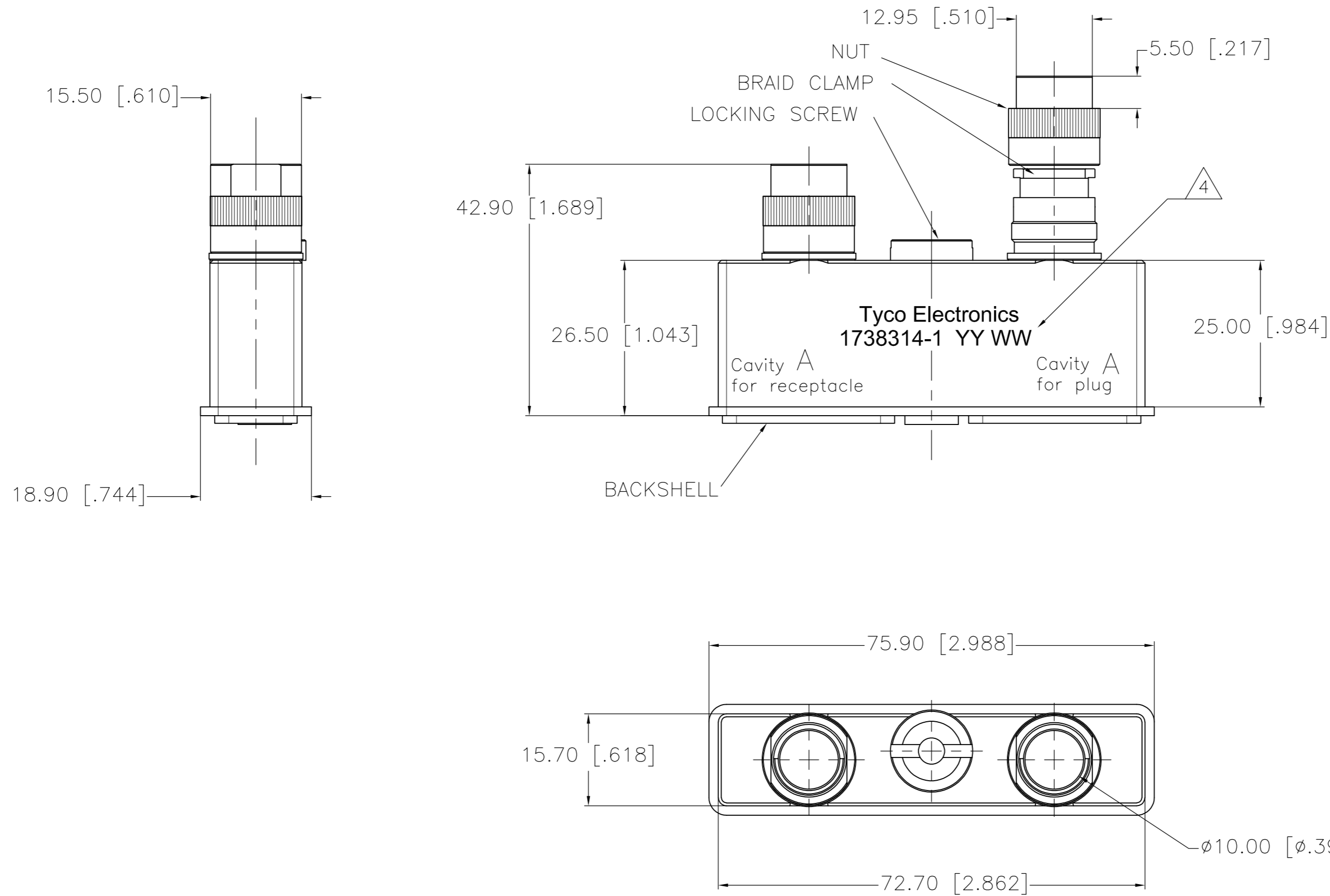


THIS DRAWING IS UNPUBLISHED. RELEASED FOR PUBLICATION  
 © COPYRIGHT - By - ALL RIGHTS RESERVED.

THIS PRINT IS  
**PRELIMINARY**  
 UNQUALIFIED PRODUCT  
 CONTACT PRODUCT ENGINEERING  
 BEFORE USING THIS PRINT

LOC		DIST		REVISIONS			
P	LTR	DESCRIPTION	DATE	DWN	APVD		
2		REV PER ECO 11-008287	4-21-11	CT	KH		

- 1 BACKSHELL, BRAID CLAMP, AND NUT: ALUMINUM ALLOY  
 LOCKING SCREW: STAINLESS STEEL
- 2 BACKSHELL, BRAID CLAMP AND NUT: ELECTROLYTIC  
 NICKEL OVER ELECTROLESS NICKEL
- 3. TOOLS:  
 SPANNER WITH 13mm ACROSS FLATS FOR THE NUT  
 TYCO ELECTRONICS P/N: 1738220-1 OR 1738221-1 FOR THE LOCKING SCREW
- 4 DATE CODE - YEAR & WEEK (YY-WW)
- 5. THIS PRODUCT IS SOLD BY TYCO ELECTRONICS  
 UNDER A LICENSE FROM RADIALL SA.



1738314

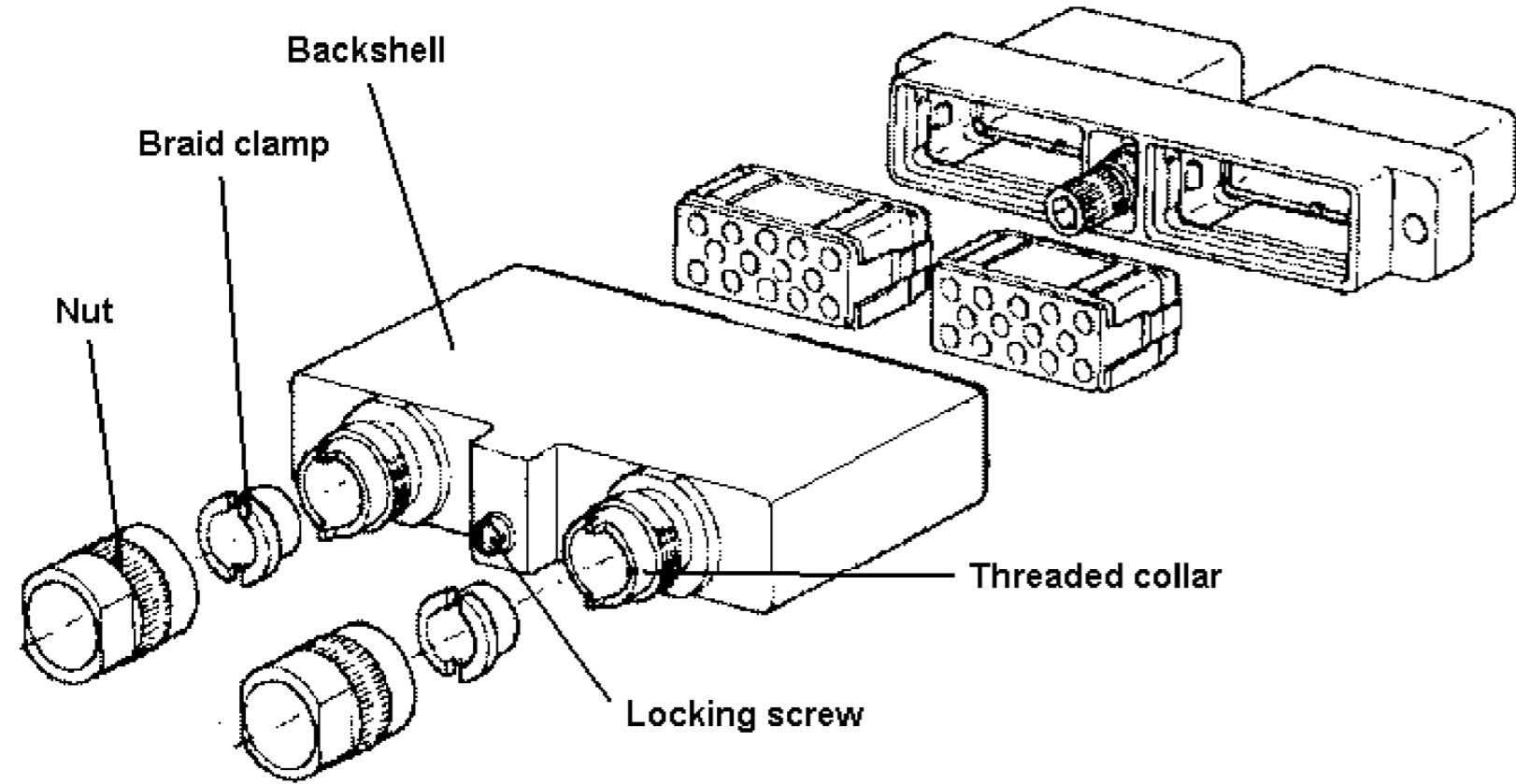
1738314-1  
 PART NUMBER

THIS DRAWING IS A CONTROLLED DOCUMENT.		DWN	SEP03	TE Connectivity	
DIMENSIONS:		CHK	SEP03		
mm [INCHES]		APVD	SEP03		
TOLERANCES UNLESS OTHERWISE SPECIFIED:		NAME			
0 PLC	± -	J MOSIER	PRODUCT SPEC	GPR-B2 BACKSHELL, SHIELDED TERMINATION	
1 PLC	± -	J MOSIER	APPLICATION SPEC	SIZE	A2
2 PLC	± 0.20 [.008]			CAGE CODE	00779
3 PLC	± -			DRAWING NO	C=1738314
4 PLC	± -			RESTRICTED TO	-
ANGLES	± -				
MATERIAL	FINISH	WEIGHT	-	SCALE	NTS
1	2	CUSTOMER DRAWING		SHEET	1 of 2
				REV	2

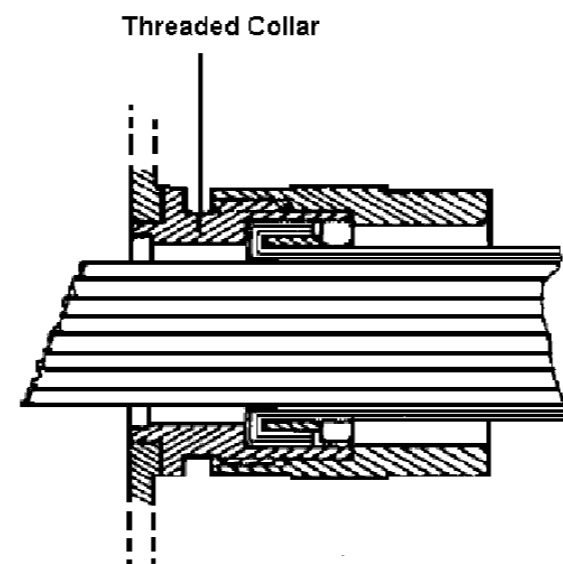
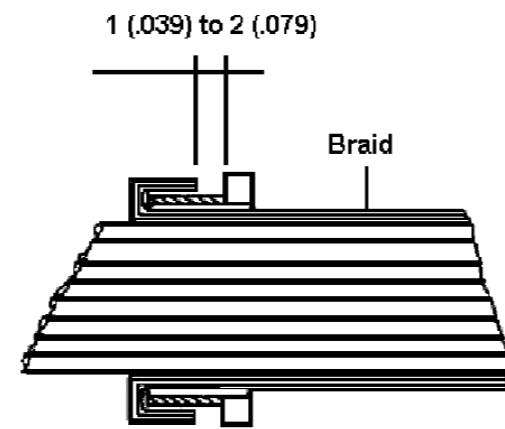
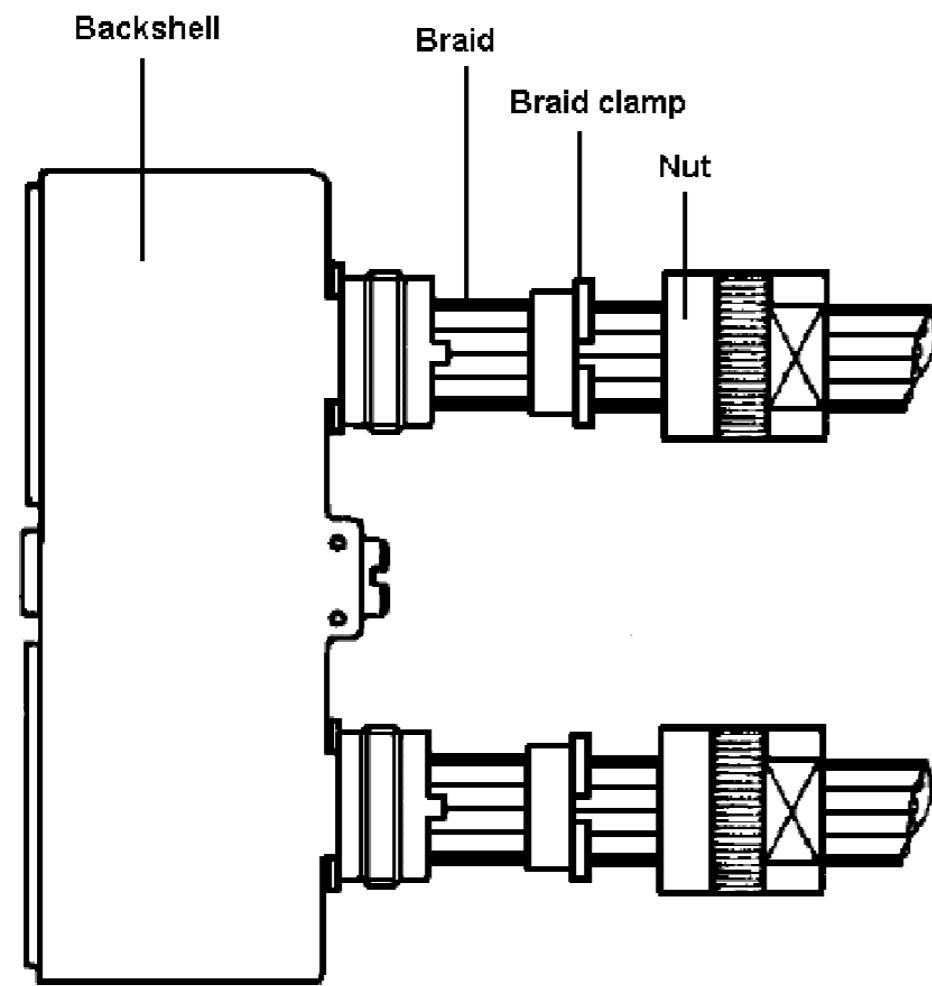
THIS DRAWING IS UNPUBLISHED. RELEASED FOR PUBLICATION  
 © COPYRIGHT - By - ALL RIGHTS RESERVED.

LOC		DIST		REVISIONS			
P	LTR	DESCRIPTION	DATE	DWN	APVD		
-	-	SEE SHEET #1	-	-	-		

Rear Shell View



1. PLACE BRAID OVER CABLE.
2. SLIDE THE NUTS AND BRAID CLAMP ONTO THE CABLE.  
NOTE: THE BACKSHELL CAN ONLY BE MOUNTED ONE WAY ROUND, SO ENSURE THAT THE CABLE IS LOCATED IN THE CORRECT CAVITY A OR B.
3. FEED THE TWISTED PAIR CABLE THROUGH THE OUTLET OF THE BACKSHELL.
4. STRIP AND TERMINATE THE TWISTED PAIR CABLE.
5. FIT THE CONTACTS INTO THE INSERT MODULE.
6. INSTALL THE INSERT MODULE INTO THE SHELL.
7. APPLY SOME THREAD LOCK ONTO THE ACCESSORY THREAD OF THE CONNECTOR SHELL
8. MOUNT THE BACKSHELL ONTO THE REAR OF THE CONNECTOR. ENSURE THAT THE LOCKING SCREW IS CORRECTLY POSITIONED ONTO THE POLARIZING KEY ACCESSORY THREAD.
9. SCREW AND TIGHTEN THE LOCKING SCREW WITH THE SPANNER WRENCH (TE PART NO. 1738221-1) (USE SPANNER WITH 13mm ACCROSS FLATS).
10. POSITION THE BRAID.
11. COMB BRAIDS.
12. FOLD BRAID OVER BRAID CLAMP.
13. SLIDE THE ASSEMBLIES ON THE THREADED COLLAR ENSURING THE ALIGNMENT OF SLOT WITH LUG.
14. SCREW AND TIGHTEN THE NUTS WITH A SPANNER.



THIS PRINT IS  
**PRELIMINARY**  
 UNQUALIFIED PRODUCT  
 CONTACT PRODUCT ENGINEERING  
 BEFORE USING THIS PRINT

THIS DRAWING IS A CONTROLLED DOCUMENT.		DWN R FLAIG SEP03	TE Connectivity	
DIMENSIONS: mm [INCHES]		CHK J MOSIER SEP03	NAME GPR-B2 BACKSHELL, SHIELDED TERMINATION	
TOLERANCES UNLESS OTHERWISE SPECIFIED:		APVD J MOSIER SEP03	SIZE A2	CAGE CODE 00779
0 PLC ± -	1 PLC ± -	PRODUCT SPEC	DRAWING NO C=1738314	RESTRICTED TO
2 PLC ± 0.20 [.008]	3 PLC ± -	APPLICATION SPEC	SCALE NTS	SHEET 2 OF 2
4 PLC ± -	ANGLES ± -	WEIGHT -	REV 2	
MATERIAL -1	FINISH -2	CUSTOMER DRAWING		

1738314