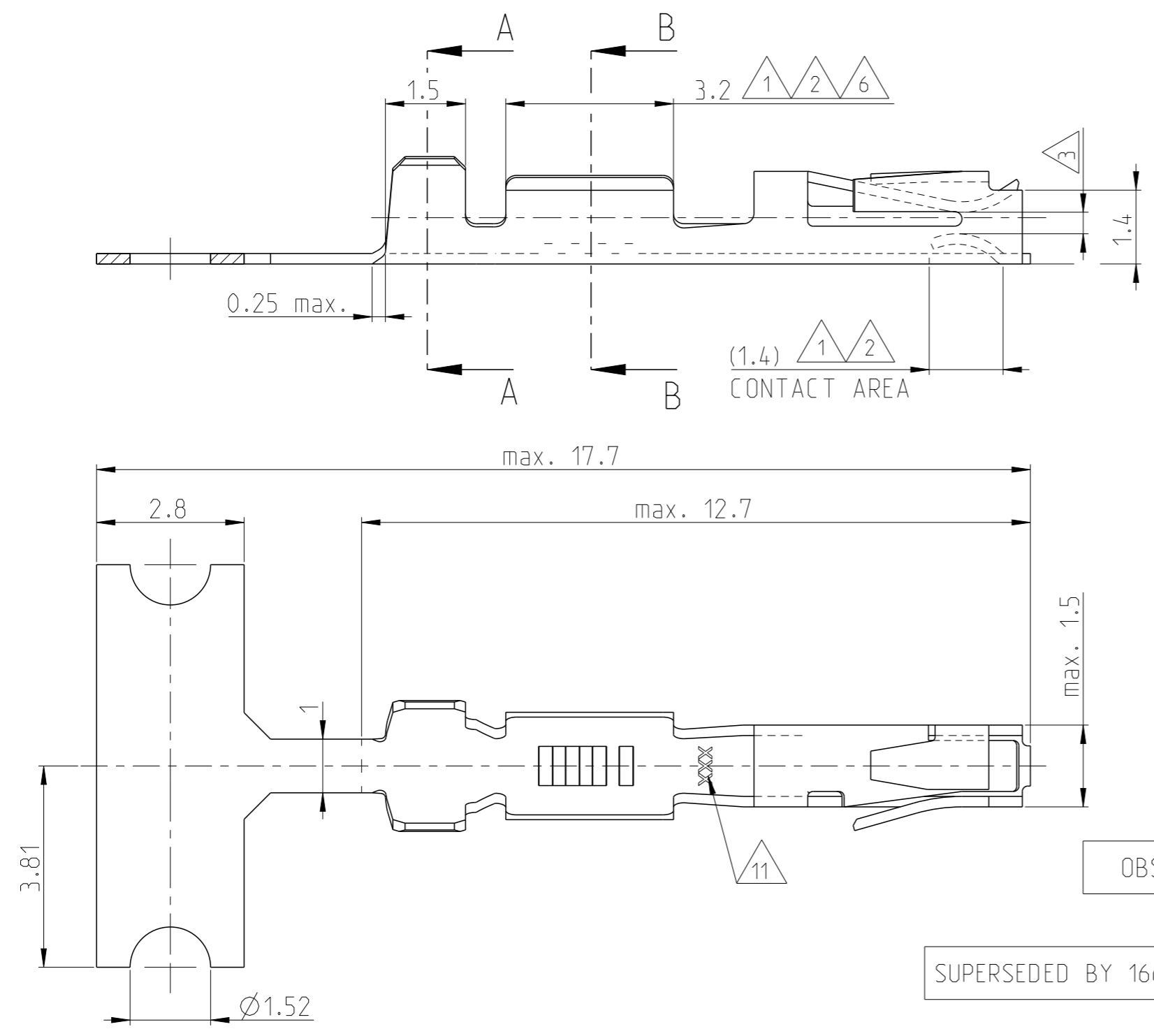


THIS DRAWING IS UNPUBLISHED. RELEASED FOR PUBLICATION 20
 © COPYRIGHT - BY - ALL RIGHTS RESERVED.

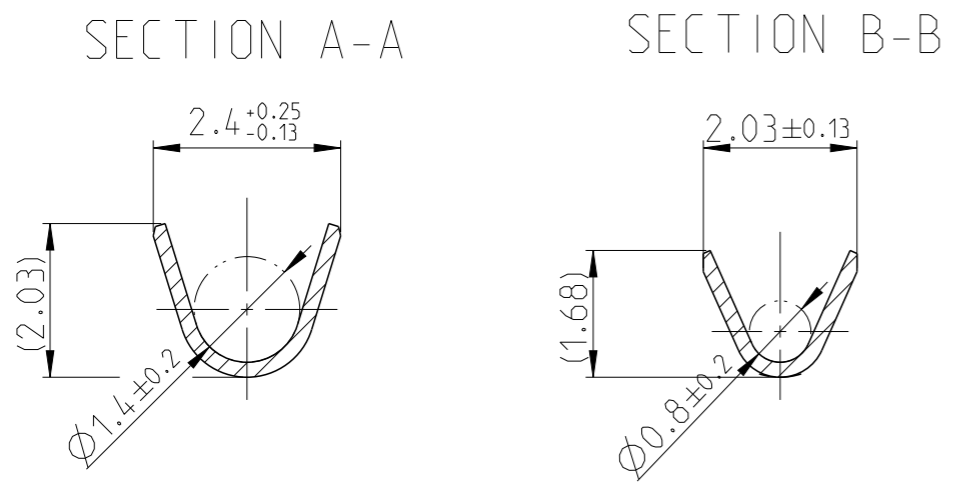
REVISIONS					
P	LTR	DESCRIPTION	DATE	DWN	APVD
	Z2	NEW DRAWING CREATED IN CREO	26JUNE2014	JBH	BRUN
	Z3	NOTE 8 MODIFIED	18NOV2015	MAH.	BRUN
	Z4	TOLERANCES ADDED AT SECTION A-A AND B-B	21JAN2016	MAH.	BRUN
	Z5	OBSOLETE PN 1-166500-1	18JAN2022	KMD	SCK



- NOTES:
- 1 UNDERCOATING: 0.8µm NICKEL OVERALL
CONTACT AREA: 0.8µm GOLD
CRIMP AREA: GOLDFLASH
 - 2 UNDERCOATING: 0.8µm NICKEL OVERALL
CONTACT AREA: 1.25µm GOLD
CRIMP AREA: GOLDFLASH
 - 3 SUITABLE FOR 0.64x0.64 POST
 - 6 UNDERCOATING: 0.8µm NICKEL OVERALL
CONTACT AREA: 0.4µm GOLD
CRIMP AREA: GOLDFLASH
 - 7 ADVANCED PROD. NRS. FOR DIN 41612 PART 5 SPEC
 - 8 PLATING: 2.0µm TIN OVER MIN. 0.5µm Ni OVERALL
 - 9 REVERSE REELED FOR USE WITH MINI APPLICATOR.
 - 10 STANDARD REELED FOR USE WITH STANDARD APPLICATOR.
 - 11 TRADE MARK.

WIRE RANGE:
20-24 (26) AWG
INSULATION RANGE:
1.40 MAX DIA.

	166722-1	1	PHOSPHORBRONZE	1-166500-2	10	Z
OBSOLETE	166722-6	8		1-166500-1	10	Z
	166722-6	8		166500-9	9	Z
SUPERSEDED BY 166500-2	166722-4	6		166500-7	9	W
	166722-2	2		166500-4	9	Z
	166722-1	1		166500-2	9	Z
LOOSE PIECE NUMBER	PLATING	MATERIAL		STRIPNUMBER	REV	



THIS DRAWING IS A CONTROLLED DOCUMENT.

DWN	M.Pfeilschiffer	18JUL2000	STE TE Connectivity
CHK	V.Huhn	18JUL2000	
APVD	-	-	NAME
PRODUCT SPEC	-	-	STANDARD TANDEM SPRING RECEPTACLE
APPLICATION SPEC	-	-	SIZE
WEIGHT	-	-	A3
CUSTOMER DRAWING	SCALE	10:1	CAGE CODE
			00779
			DRAWING NO
			166500
			RESTRICTED TO
			-
			SHEET
			1 OF 1
			REV
			Z5