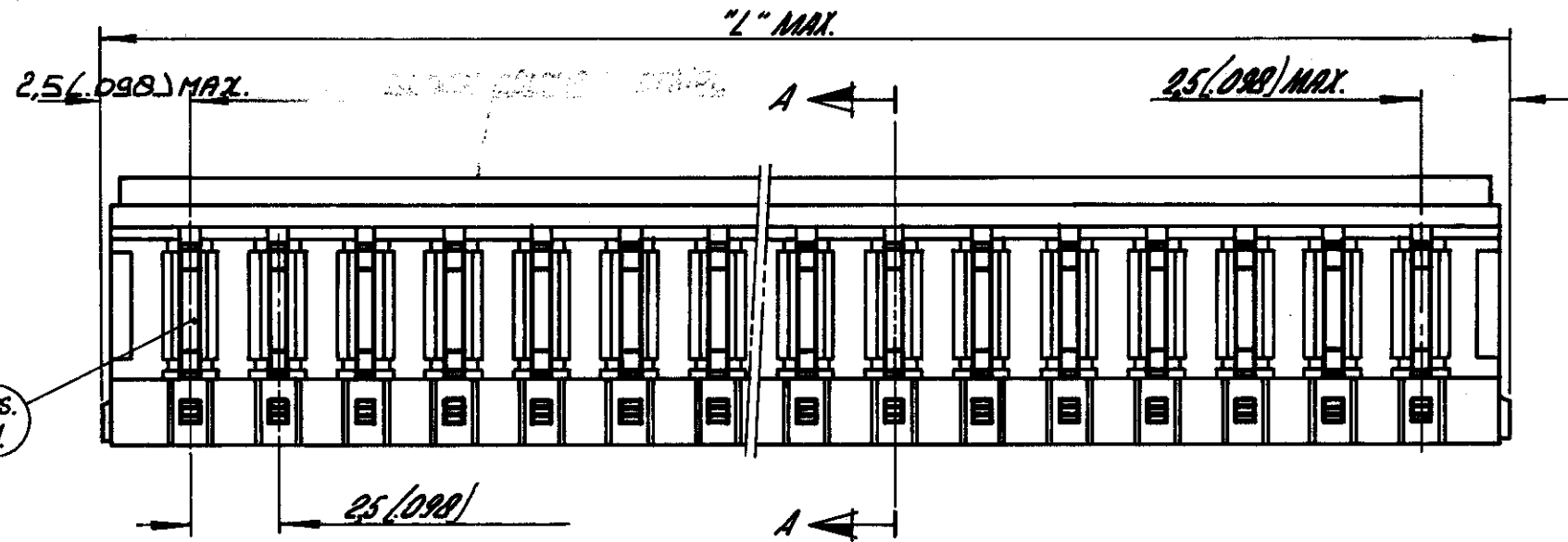
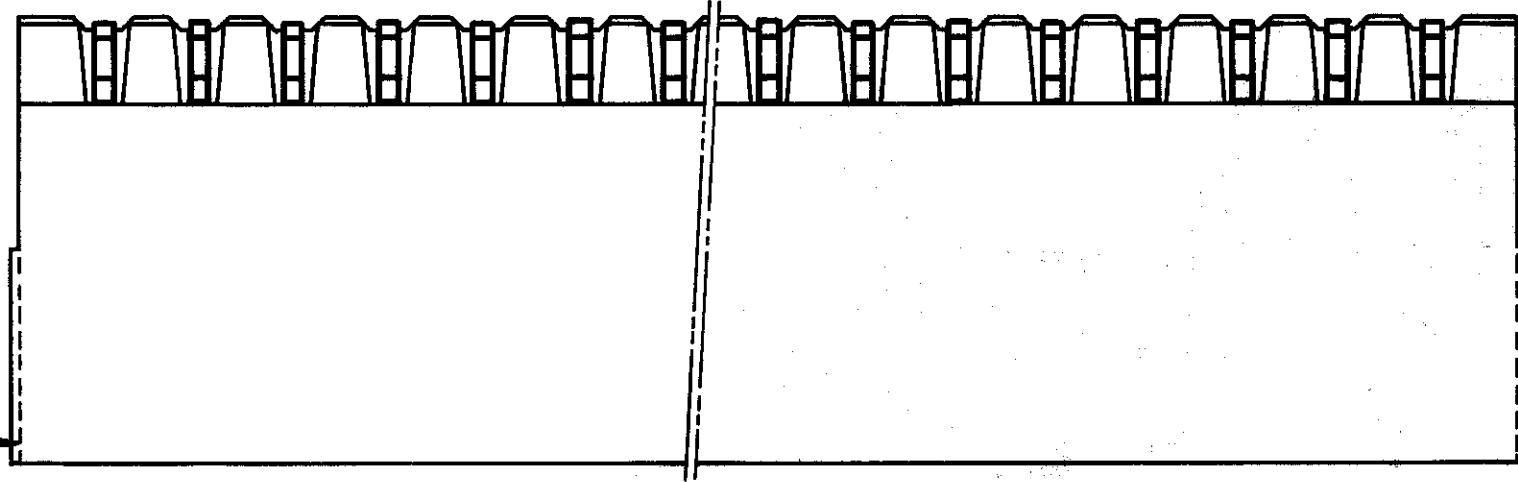


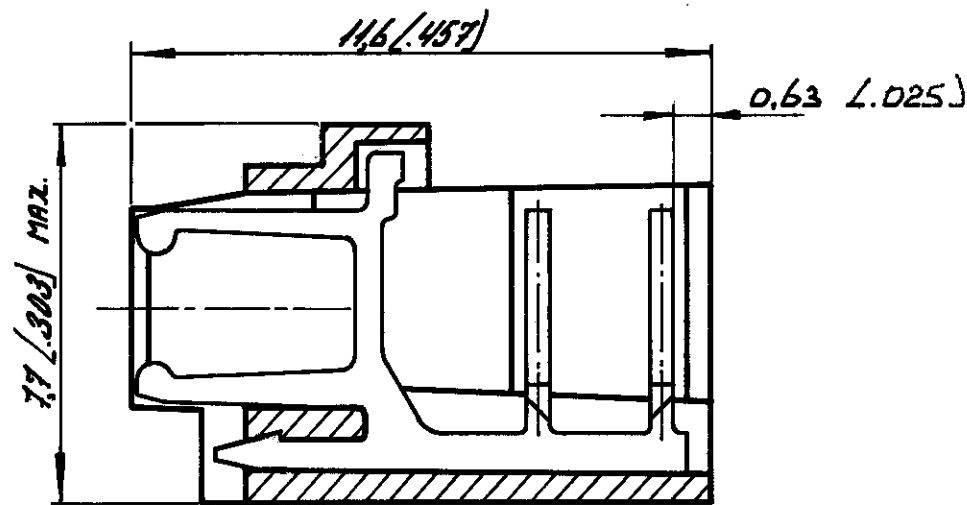
G1	ECR-08-014307	29-01-09	AEG	WRV
G2	ECO-09-025273	17NOV09	KK	AEG



POS. 1



OPTIONAL (2x)



SECTION A-A

	ORDER NUMBER	NUMBER OF POSITIONS	2" MAX.	
			M.M.	INCH.
OBSOLETE	164851-2	2	7.6	.300
OBSOLETE	-3	3	10.1	.398
	-4	4	12.6	.496
1 OBSOLETE	-5	5	15.1	.594
	-6	6	17.6	.692
	-7	7	20.1	.791
OBSOLETE	-8	8	22.6	.890
	-9	9	25.1	.988
1	-10	10	27.6	1.087
	-11	11	30.1	1.185
	-12	12	32.6	1.283
	-13	13	35.1	1.382
1	-14	14	37.6	1.480
1 OBSOLETE	-15	15	40.1	1.579
	-16	16	42.6	1.677
	-17	17	45.1	1.776
	-18	18	47.6	1.874
	-19	19	50.1	1.973
1 OBSOLETE	<del>2-164851-0</del>	20	52.6	2.071

MATERIAL: HOUSING: P.B.T., 20% GLASS FILLED.  
CONTACT: BRASS, TIN-LEAD (93/7) PLATING OVER NICKEL BARRIER

1 OBSOLETE PARTS: OBSOLETE CIS STREAMLINING PER D.RENAUD/D.SINISI

SEE TABLE.	SEE ABOVE.	SEE ABOVE.
ORDER NO.	MATERIAL	PLATING
<b>CUSTOMER COPY FOR REFERENCE ONLY</b>		
DR <i>[Signature]</i> DATE 26.4.1978	© 1978 BY AMP-HOLLAND N.V. ALL RIGHTS RESERVED A-MP PRODUCTS COVERED BY PATENTS AND/OR PATENTS PENDING.	
CHK	<b>AMP - HOLLAND N.V.</b> 's-Hertogenbosch	
DE		
APP <i>[Signature]</i> DATE 21/4/01	WIRE-RANGE	INSUL.-RANGE
	SCALE N.T.S.	SIZE B
	NO <b>2-164851</b>	
	NAME <b>2-20 POS. FEMALE ON WIRE CONNECTOR ASSY (VERTICAL) FOR MINI-MATCH INTERCONNECTION SYSTEM, PITCH: 2.5 mm.</b>	
		REV G2

DIMENSIONS IN M.M. DO NOT SCALE PRINT DIMENSIONS THRU [ ] IN INCHES.