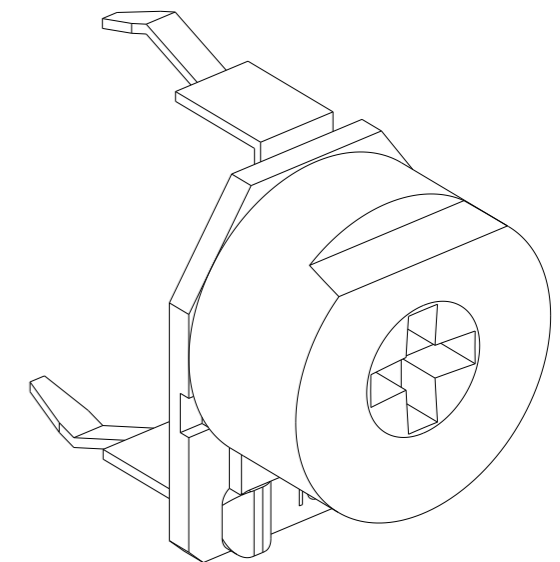
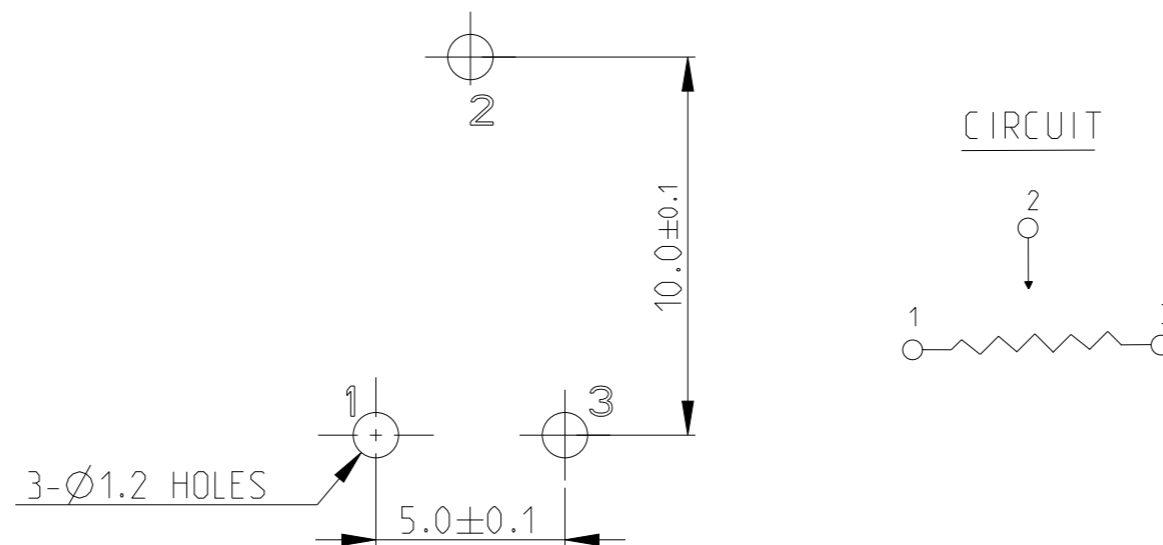
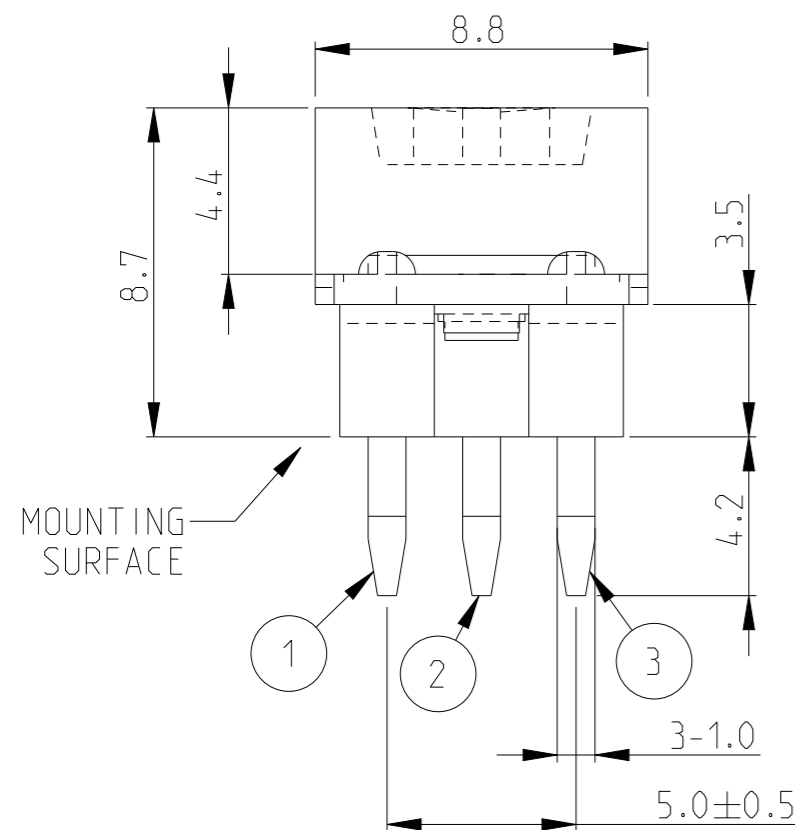
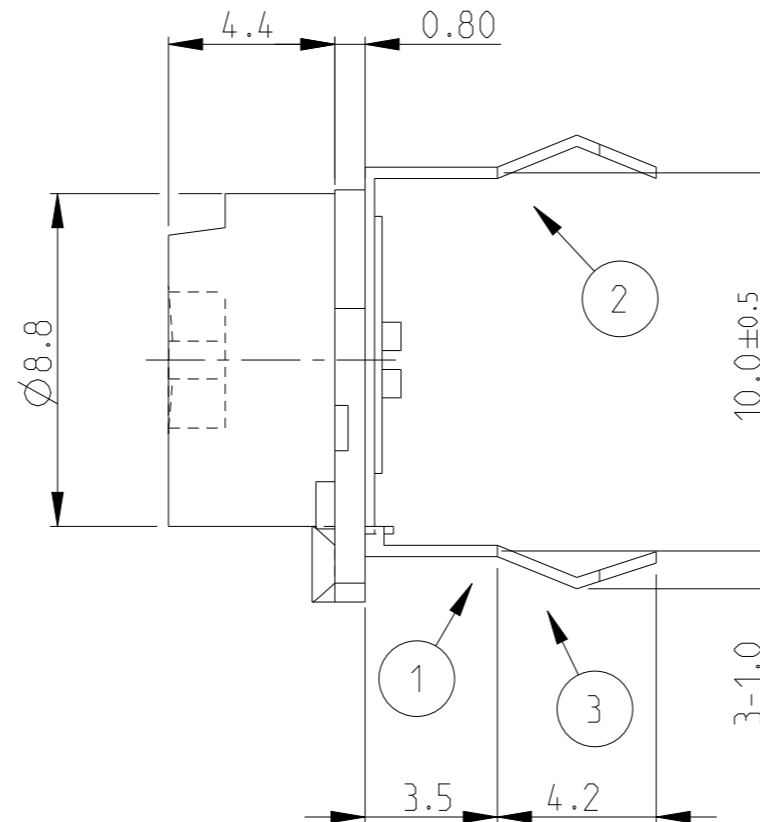
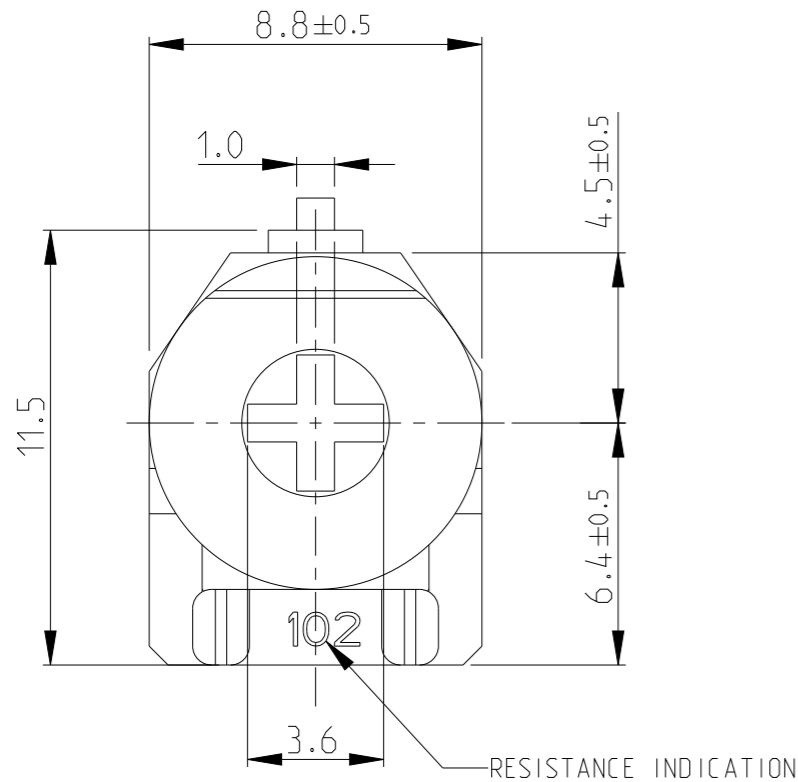



| P | LTR | DESCRIPTION | DATE | DWN | APVD |
|---|-----|-------------|-----------|-----|------|
| | BA | NEW RELEASE | 28JUL2008 | SM | St.P |
| | BA1 | OBSOLETE | 25MAR2022 | DM | AP |
| | BA2 | RELEASED | 07APR2022 | DM | AP |

FOR FURTHER INFORMATION SEE DATA SHEET FOR 409 SERIES-ECONOMY TRIMMERS

RoHS Compliant



| | | | | | |
|--|--------|------------------|-----------|------------------|---|
| THIS DRAWING IS A CONTROLLED DOCUMENT. | | DWN | 28JUL2008 | |  TE Connectivity |
| | | CHK | 28JUL2008 | | |
| | | APVD | 28JUL2008 | | |
| | | NAME | STEPHEN.P | | |
| DIMENSIONS: | | PRODUCT SPEC | | ECONOMY TRIMMERS | |
| mm | | APPLICATION SPEC | | SERIES 409H | |
| TOLERANCES UNLESS OTHERWISE SPECIFIED: | | WEIGHT | | SIZE | RESTRICTED TO |
| 0 PLC | ±0.5 | - | | A3 | - |
| 1 PLC | ±0.2 | - | | CAGE CODE | 00779 |
| 2 PLC | ±0.1 | - | | DRAWING NO | C=1623856 |
| 3 PLC | ± | - | | SCALE | 5:1 |
| 4 PLC | ± | - | | SHEET | 1 OF 1 |
| ANGLES | ±5° | - | | REV | BA2 |
| MATERIAL | FINISH | CUSTOMER DRAWING | | | |
| - | - | | | | |