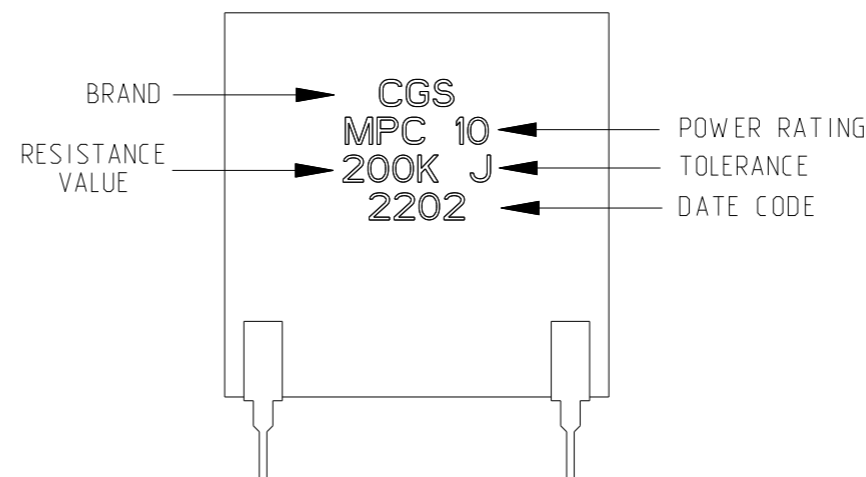
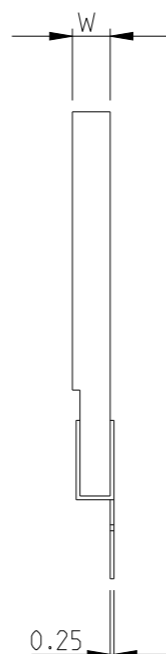
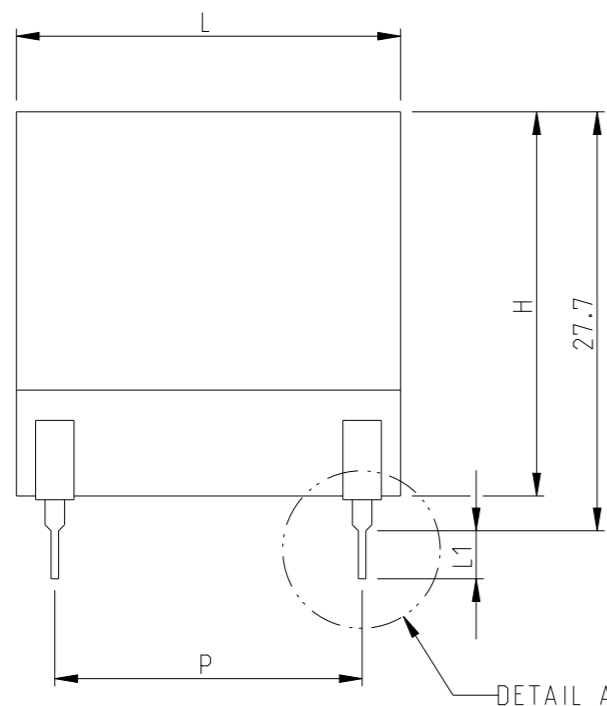
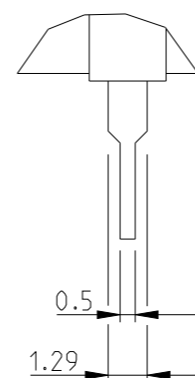


P	LTR	DESCRIPTION	DATE	DWN	APVD
	BA	NEW RELEASE	02AUG2012	KR	TN
	BB	DRAWING SCHEDULE UPDATED	29NOV2022	Ka	AP

FOR FURTHER INFORMATION SEE DATA SHEET FOR SERIES MPC - HIGH POWER RESISTORS



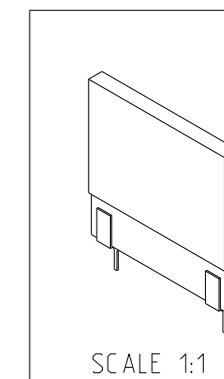
DETAIL A
SCALE 4:1



L ±0.13	H ±0.13	W ±0.05	P ±0.38	L1
25.4	25.4	2.5	20.32	3.175

SCHEDULE			
TCPN	CATALOGUE NUMBER	PART DESCRIPTION	PART STATUS
1623775-1	MPC 108100J	MPC 10 10R 5%	PRODUCTION
1623775-2	MPC 108103J	MPC 10 10K 5%	PRODUCTION
1623775-3	MPC 1081R0J	MPC 10 1R0 5%	PRODUCTION
1623775-4	MPC 108200J	MPC 10 20R 5%	DISCONTINUED
1623775-5	MPC 108500J	MPC 10 50R 5%	DISCONTINUED
1623775-6	MPC 1085R0J	MPC 10 5R0 5%	PRODUCTION
1623775-7	MPC 108101J	MPC 10 100R 5%	DISCONTINUED
1623775-8	MPC 108102J	MPC 10 1K0 5%	PRODUCTION
1623775-9	MPC 108201J	MPC 10 200R 5%	PRODUCTION
1-1623775-0	MPC 108202J	MPC 10 2K0 5%	PRODUCTION
1-1623775-1	MPC 108203J	MPC 10 20K 5%	PRODUCTION
1-1623775-2	MPC 108501J	MPC 10 500R 5%	PRODUCTION
1-1623775-3	MPC 108502J	MPC 10 5K0 5%	PRODUCTION
1-1623775-4	MPC 108503J	MPC 10 50K 5%	PRODUCTION
1-1623775-5	MPC 108150J	MPC 10 15R 5%	DISCONTINUED
1-1623775-6	MPC 108330J	MPC 10 33R 5%	DISCONTINUED
1-1623775-7	MPC 1086R8J	MPC 10 6R8 5%	DISCONTINUED
1-1623775-8	MPC 1081R0F	MPC 10 1R0 1%	PRODUCTION

RoHS Compliant



THIS DRAWING IS A CONTROLLED DOCUMENT.		DWN 02AUG2012 RAGHAVENDRA K														
DIMENSIONS: mm		CHK 02AUG2012 ALLAN P														
TOLERANCES UNLESS OTHERWISE SPECIFIED:		APVD 02AUG2012 TONY N	NAME HIGH POWER RESISTORS TYPE MPC10 SERIES													
<table border="1"> <tr><td>0 PLC</td><td>±0.2</td></tr> <tr><td>1 PLC</td><td>±0.1</td></tr> <tr><td>2 PLC</td><td>±</td></tr> <tr><td>3 PLC</td><td>±</td></tr> <tr><td>4 PLC</td><td>±</td></tr> <tr><td>ANGLES</td><td>±5°</td></tr> </table>		0 PLC	±0.2	1 PLC	±0.1	2 PLC	±	3 PLC	±	4 PLC	±	ANGLES	±5°	PRODUCT SPEC	RESTRICTED TO	
0 PLC	±0.2															
1 PLC	±0.1															
2 PLC	±															
3 PLC	±															
4 PLC	±															
ANGLES	±5°															
MATERIAL		APPLICATION SPEC	SIZE A3	CAGE CODE 00779												
		WEIGHT 2.6 g/pc	DRAWING NO C-1623775													
		CUSTOMER DRAWING	SCALE 2:1	SHEET 1 OF 1												
				REV BB												