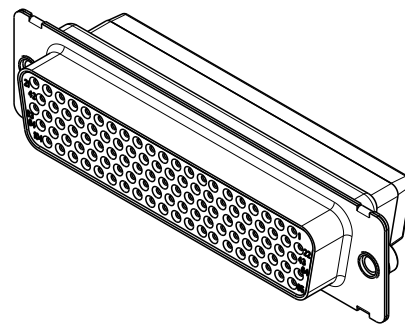
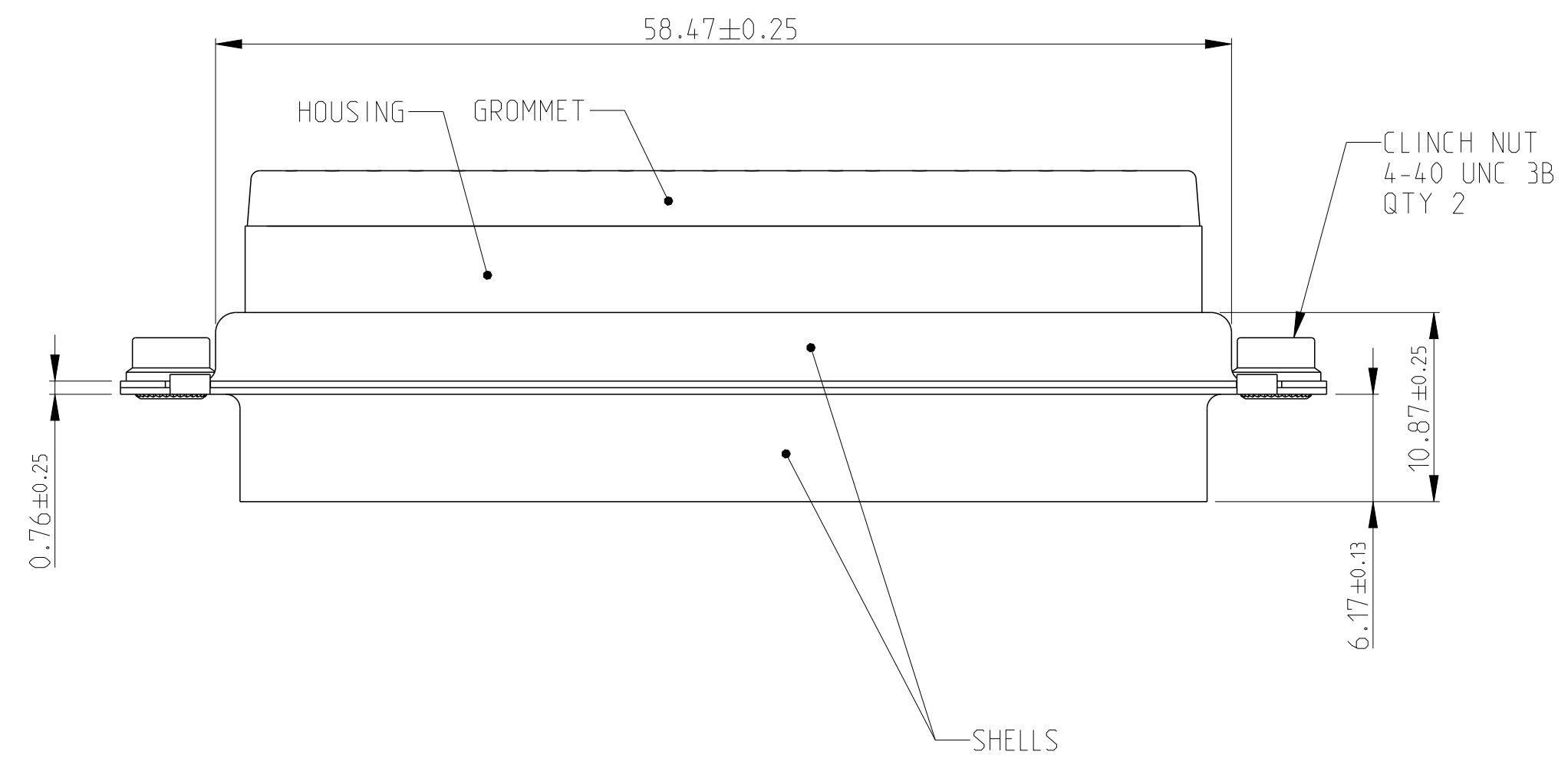
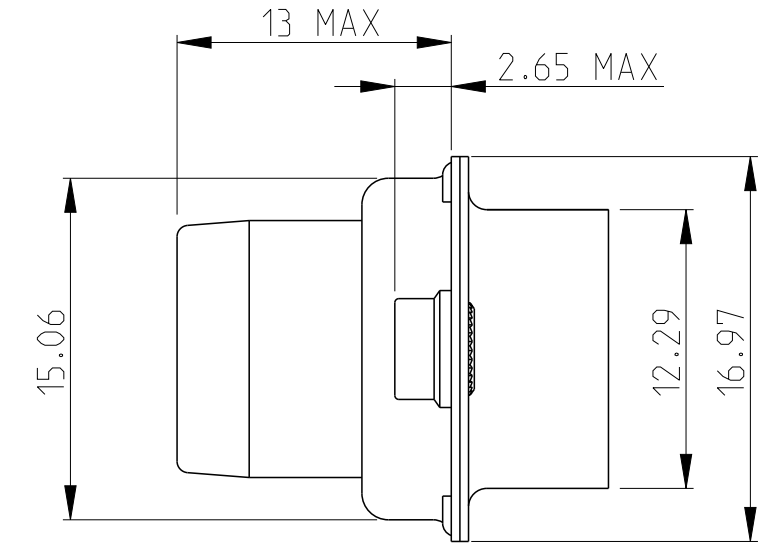
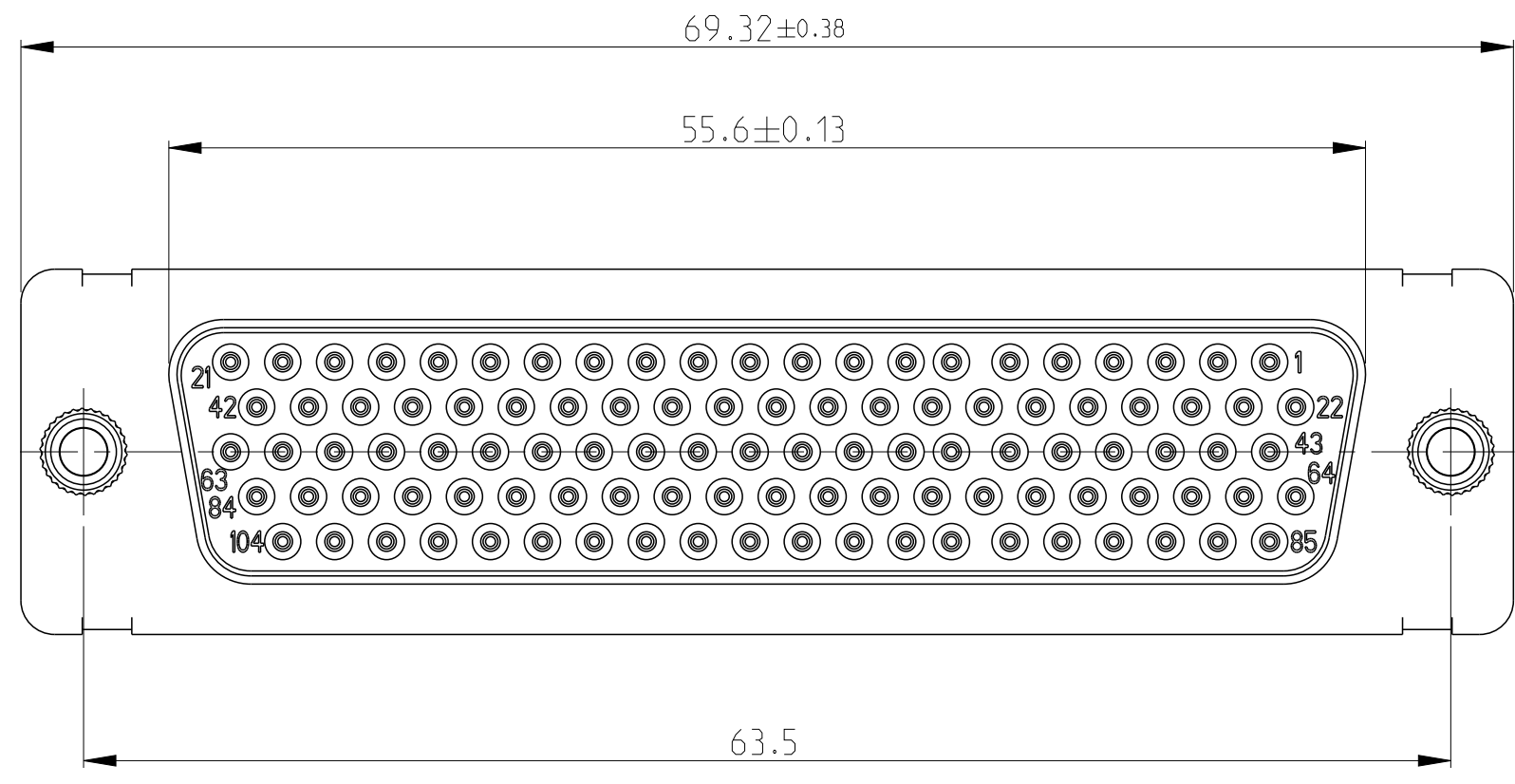


THIS DRAWING IS UNPUBLISHED. RELEASED FOR PUBLICATION 20
 © COPYRIGHT 20 BY - ALL RIGHTS RESERVED.

LOC	DIST	REVISIONS			
P	LTR	DESCRIPTION	DATE	DWN	APVD
F	00	A	UPDATE	17JUN2013	JT YP



SCALE 1:1



1. THIS CONNECTOR MEETS THE REQUIREMENTS OF MIL-DTL-24308.
2. MATERIALS:
 - SHELLS: STEEL, CADMIUM PLATED.
 - HOUSING: PPS, 40% GLASS FIBER REINFORCED, COLOR BLACK
 - RETAINING CLIP: BERYLLIUM COPPER.
 - GROMMET: SILICONE RUBBER, COLOR RED.
 - CLINCH NUT : STEEL, ZINC PLATED.BLUE POLYAMIDE INSERT.
3. CONNECTOR MARKING: MANUFACTURER IDENTIFICATION, PART NUMBER, DATE-CODE.
4. CONTACT ARRANGEMENT PER MIL-DTL-24308.
5. ACCEPTS SOCKETCONTACTS 204351-1
 INSERTION/EXTRACTION TOOL 91067-1
 CRIMP WITH HAND TOOL M22520/02-01 + POSITIONNER M22520/02-06
 WIRE EXTERNAL DIAMETER 1.37 MAX

1577110-1
 PART NUMBER

THIS DRAWING IS A CONTROLLED DOCUMENT.		DWN I.CORRIOU 02MAY2012	TE Connectivity	
DIMENSIONS: mm		CHK J.THUEZ 02MAY2012		
TOLERANCES UNLESS OTHERWISE SPECIFIED:		APVD Y.PETRONIN 02MAY2012	NAME RCPT ASSEMBLY, AMPLIMITE, 104 POSN, SERIES 90, W/DUAL CLINCH NUT 4-40	
0 PLC ±0.13 1 PLC ±0.13 2 PLC ±0.13 3 PLC ± 4 PLC ± ANGLES ±1 FINISH		PRODUCT SPEC -	SIZE A2	CAGE CODE 00779
MATERIAL NOTE 2		APPLICATION SPEC 408-7477	DRAWING NO C-1577110	RESTRICTED TO -
NOTE 2		WEIGHT 23.5g	Customer Drawing	SCALE 3:1 SHEET 1 OF 1 REV A