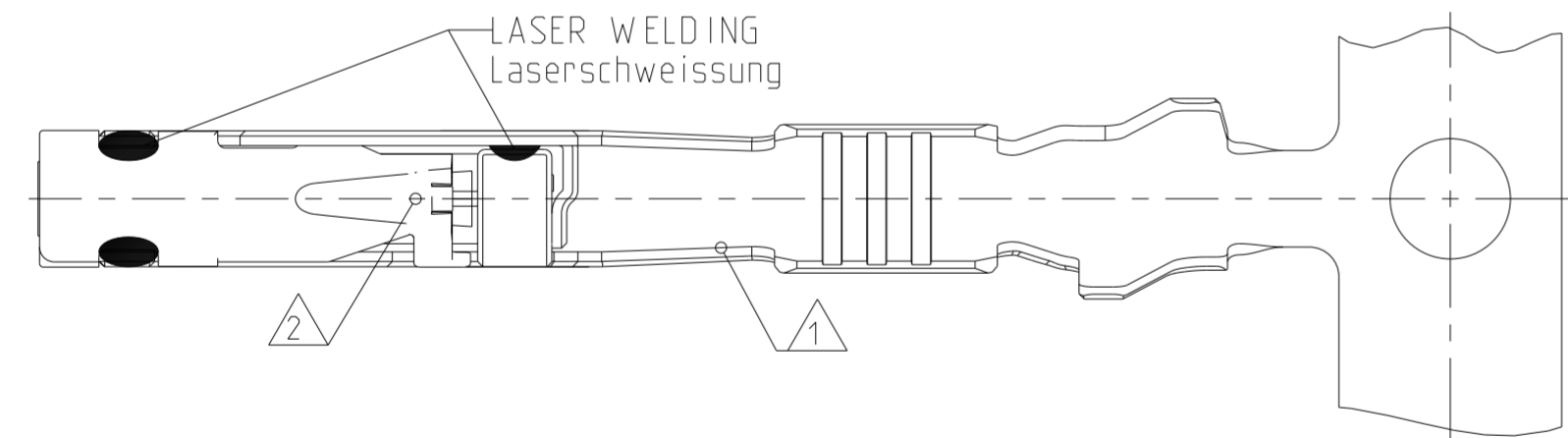
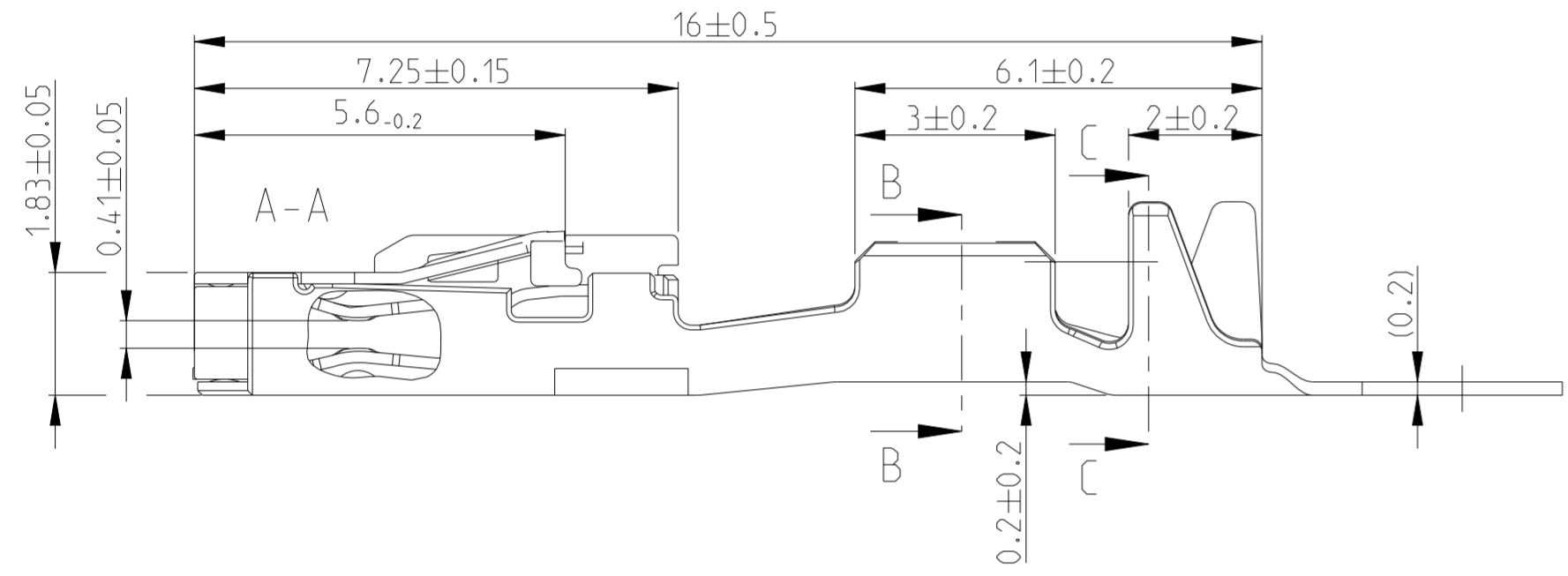
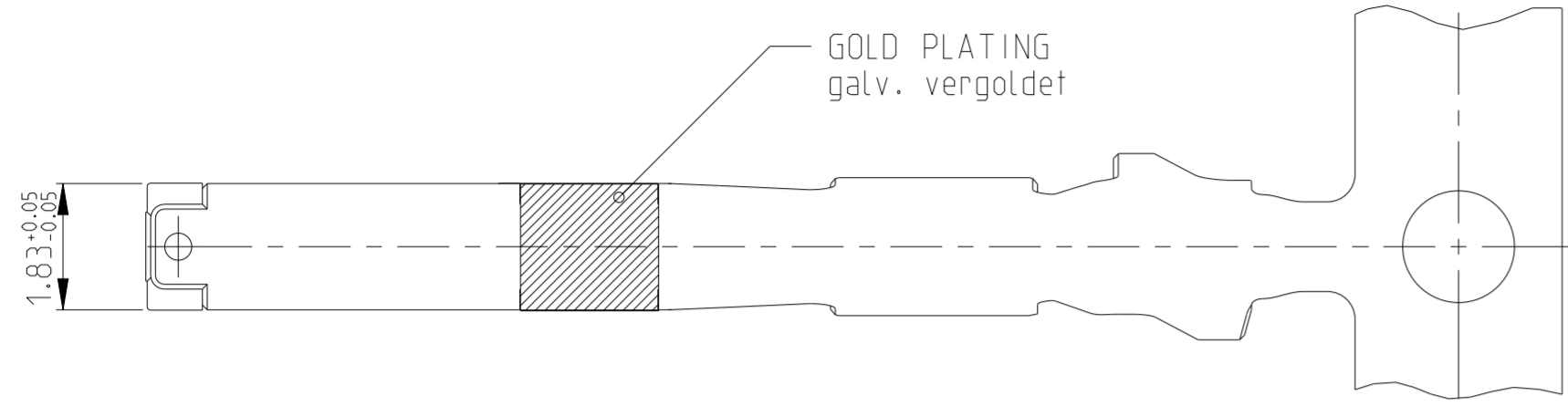


THE DRAWING SHOWS THE 2-DIMENSIONAL REFERENCE COMPONENT CONDITION OF THE ASSEMBLY TO IDENTIFY AND SPECIFY THE NECESSARY DIMENSIONS ONLY. THE DELIVERED PARTS MAY DEVIATE FROM THE DRAWING REGARDING THE ORIENTATION AND POSITION OF EACH COMPONENT (e.g. SLACK CABLE), SO FAR THE FUNCTIONALITY IS NOT CONCERNED.

DIE ZEICHNUNG ZEIGT DEN 2-DIMENSIONALEN IDEALZUSTAND DES ZUSAMMENBAUTEILS BEZUEGLICH DER KOMPONENTEN ZUR IDENTIFIKATION UND SPEZIFIKATION DER NOTWENDIGEN DIMENSIONEN. HINSICHTLICH DER ORIENTIERUNG UND DER LAGE DER KOMPONENTEN (z.B. BIEGESCHLAFTES KABEL) KOENNEN DIE DELIEFERTEN TEILE VON DER ZEICHNUNG ABWEICHEN, SOFERN DIE FUNKTIONALITAET NICHT BEEINTRAECHTIGT IST.

REVISIONS

P	LTR	DESCRIPTION	DATE	DWN	APVD
A		NEW DRAWING	15JAN2009	R.M.	-
B		LATCH 2nd LOCKING AREA MODIFIED	15MAY2009	R.M.	-
B1		DIM and APPL.-TOOL ADAPTED	11JUL2019	BREN	SCHM
B2		Added PN 7-1563888-1	31AUG2021	FRAN	DEIS

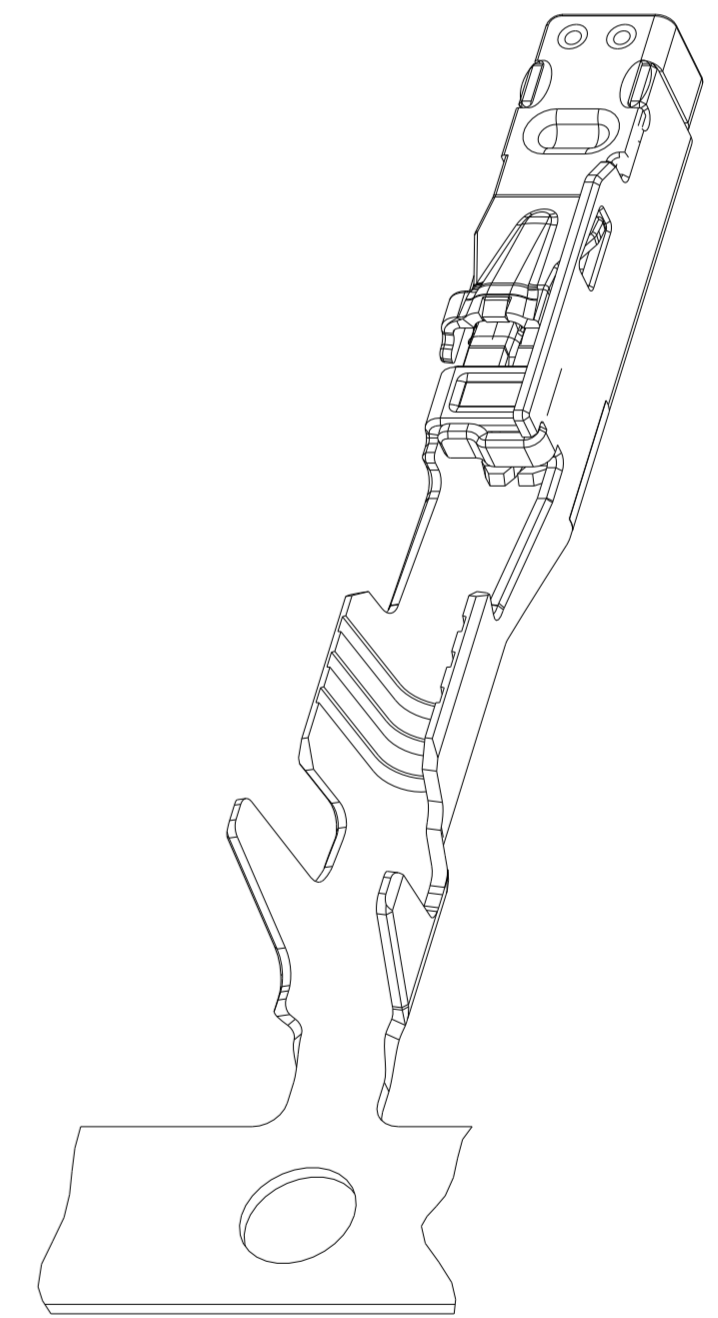
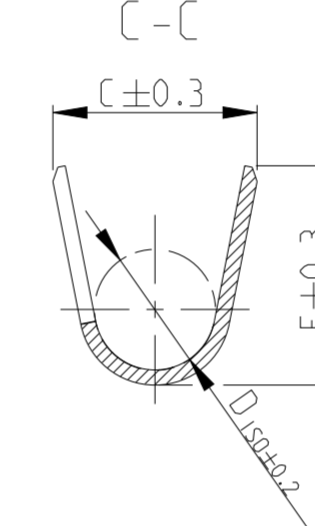
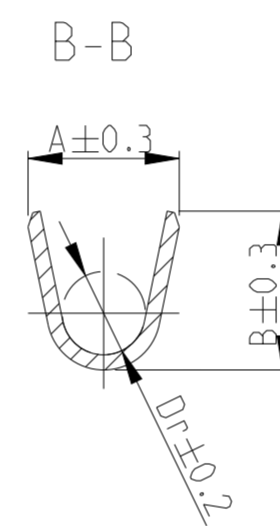


NOTES

- 1 BODY
- 2 SPRING
- 3 ONLY FOR FLR-WIRE SEE DIN 72551, PART 6
- 4 SURFACE
 - a) BODY
 - TIN PLATED 1 TO 3 µm
 - GOLD PLATED MIN. 0.8µm (only contact area)
 - b) SPRING / Kontaktfeder
 - GOLD PLATED MIN. 0.8µm (only contact area)

Bemerkungen

- 1 Kontaktkoerper
- 2 Kontaktfeder
- 3 Nur fuer FLR-Leitung nach DIN 72551, Teil 6
- 4 Oberflaeche
 - a) Kontaktkoerper
 - galv.verzinkt 1 bis 3 µm
 - galv. vergoldet min. 0.8µm (nur Kontaktzone)
 - b) Kontaktfeder
 - galv. vergoldet min. 0.8µm (nur Kontaktzone)



VERSION / Ausfuhrung	TE ORDER-NO. STRIP FORM	Rev.	TE ORDER-NO. LOOSE PIECE	REV.	BODY Kontaktkoerper	SPRING Kontaktfeder	BODY Kontaktkoerper	SPRING Kontaktfeder	RANGE Bereich	mm ²	INSULATION-Ø Isolations-Ø (mm)	A	B	D _{Dr}	C	E	D _{ISO}	MASTER APPLICATION-TOOL	DIE-ORDER-NO. FOR BASIC-HANDTOOL
STANDARD CRIMP	7-1563888-1	A	1563889-1	B	CuSn4	CuNiSi	TIN PLATED verzinkt	GOLD PLATED vergoldet	0.5	0.5	1.4-1.6	2.0	2.1	1.1	2.7	2.9	1.6	2151037 (1528157)	4-1579001-2
TE ORDER-NO. STRIP FORM	1563888-1	B			CuSn0.15													Basis Crimp-Werkzeug	Matrizen Bestell-Nr. fuer Basishandzange 539635-1 ERGO-Crimp
Bestell-Nr. Bandware			Bestell-Nr. Einzel-ausfuhrung		MATERIAL Werkstoff	SURFACE Oberflaeche	WIRE-SIZE RANGE INSULATION DIAMETER Leiterquerschnitt Isolationsdurchmesser		WIRE CRIMP Drahtcrimp		INSULATION CRIMP Isolationscrimp		EXTRACTION TOOL SEE: / Ausdrueckwerkzeug siehe: SPEC. 114-18464						
STRIP FORM / Bandware																			

THIS DRAWING IS A CONTROLLED DOCUMENT.		DWN R. Meier 15JAN2008	TE Connectivity	
		CHK R. Meier 20OCT2008		
DIMENSIONS: mm		TOLERANCES UNLESS OTHERWISE SPECIFIED:		NAME MCON-1.2 LL (for short circuit application) (fuer Kurzschlussfeder- Anwendungen)
		0 PLC	±	PRODUCT SPEC 108-18782
		1 PLC	±	APPLICATION SPEC 114-18464
		2 PLC	±	WEIGHT -
		3 PLC	±	RESTRICTED CUSTOMER
		4 PLC	±	SIZE A2
		ANGLES FINISH	±°	CAGE CODE 00779
		SCALE 10:1		SHEET 1 OF 1
				REV B2