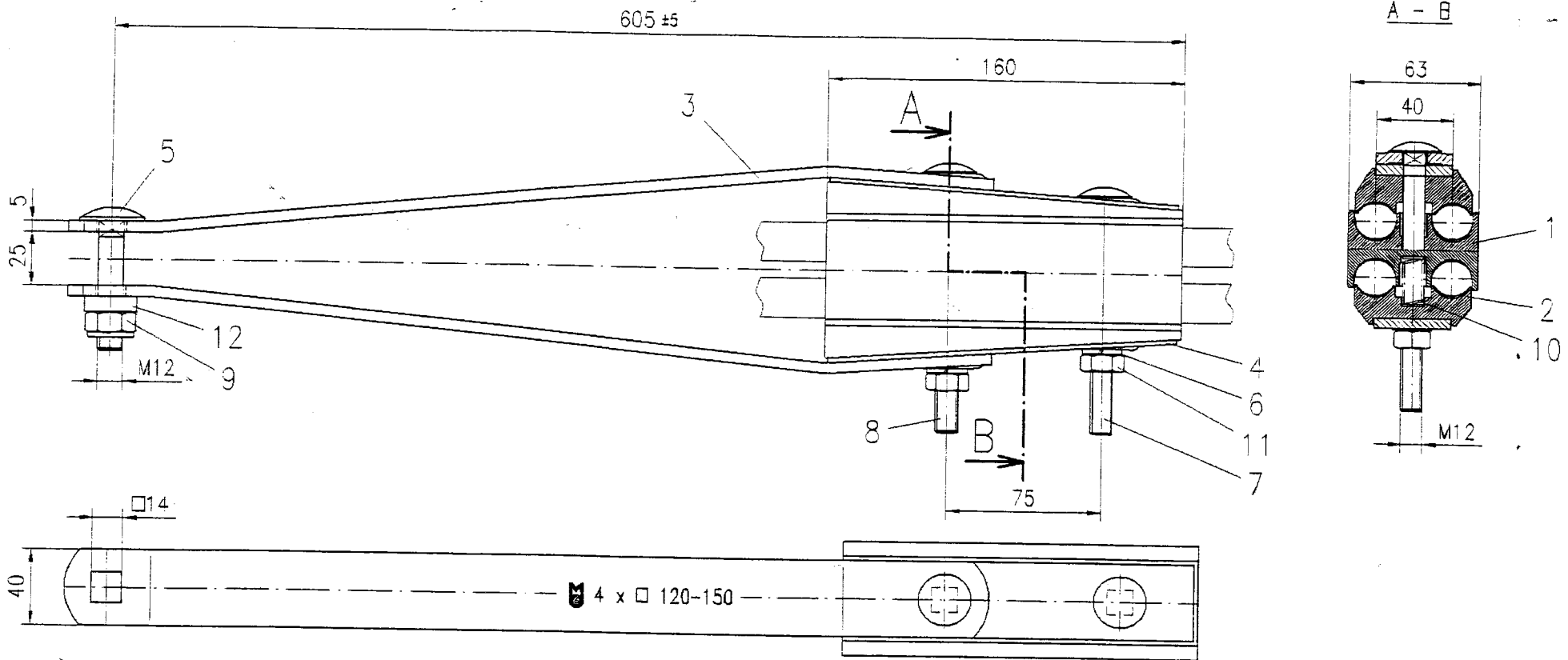


LOC	DIST	REVISIONS				
		REF	DESCRIPTION	DATE	DWN	APVD
		REV	MODIFICATIONS		BESS.	APP.
F4	2	A	E000-0155-03	15APR2003	JB	AD



Qty	Description	Standard	Org. no.	Art. no.	Material	Surface
12	washer A14	DIN 7989		1062.53	St	hot dip galv.
11	hexagon nut M10	DIN 934		1052.04	8	hot dip galv.
10	compression spring 45x10			ZD 028.005	A2	galv.
9	hexagon nut M12 self-locking	DIN 385		1052.64	A2	stainless
3	cup square b. M12x160/65	DIN 603		1014.24/4	8.8	hot dip galv.
7	cup square b. M12x140/65	DIN 603		1014.24/3	8.8	hot dip galv.
6	spring washer B12	DIN 127		1064.04	St	mech. galv.
5	cup square ball M12x60/30	DIN 803		1014.23	8.8	zn coated
4	intermediate plate	D1906005 A3		ZA 005.018	S235JRG2	hot dip galv.
3	tension strap	D1906005 A3		ZA 005.020	S235JRG2	hot dip galv.
2	wedge			ZK 010.270	PA 6 GF 30	black
1	intermediate bar			ZZ 015.016	PA 6 GF 30	black

THIS DRAWING IS A CONTROLLED DOCUMENT FOR TYCO ELECTRONICS CORPORATION
 IT IS SUBJECT TO CHANGE AND THE CONTROLLING ENGINEERING ORGANIZATION
 SHOULD BE CONTACTED FOR THE LATEST REVISION.
 CE PLAN EST UN DOCUMENT CONTROLÉ PAR TYCO ELECTRONICS CORPORATION
 IL EST SUSCEPTIBLE D'ÊTRE REVISÉ. CONTACTER LE SERVICE
 TECHNIQUE POUR OBTENIR LA DERNIÈRE RÉVISION.

DIMENSIONS: mm

TOLERANCES UNLESS OTHERWISE SPECIFIED (SUIVANT LE DECE/NALES):
 0 PLC/DEC. = 0
 1 PLC/DEC. = 0.1
 2 PLC/DEC. = 0.2
 3 PLC/DEC. = 0.3
 4 PLC/DEC. = 0.4
 ANGLES = 0

MATERIAL MATIÈRE: FINISH FINITION

DWN/DESSINE: J BERLAND 15APR2003
 CHK/VERIFIE: A DUPONT
 APVD/APPROUVE: G PORCHERAY
 PRODUCT SPEC SPEC. PRODUIT
 APPLICATION SPEC SPEC. APPLICATION

NAME TITRE: PA 4x120-150

SIZE FORMAT: A3
 CAGE CODE: 00779
 DRAWING NO: No PLAN
 No. 13: 9666

WEIGHT MASSE APPROX. 3.4 kg

CUSTOMER DRAWING /PLAN CLIENT

UNIQUEMENT POUR REFERENCE
 SCALE ECHELLE: -
 SHEET FEUILLE: - OF DE: -
 REV: A

TOLERANCES UNLESS OTHERWISE SPECIFIED: TOLERANCES NON SPECIFIEES:

tyco Electronics SIMEL 21220 Gevrey-Chambertin, FRANCE