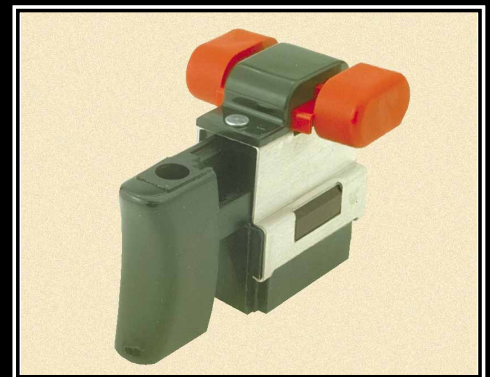
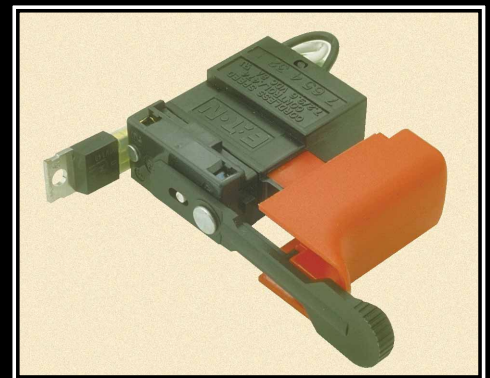
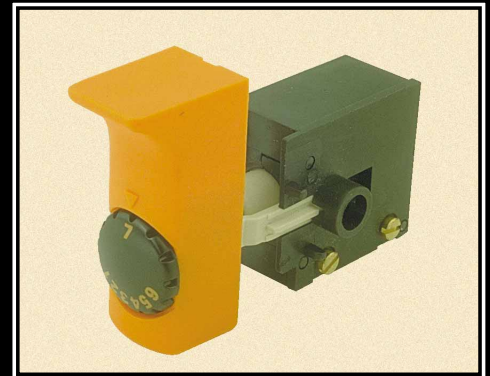
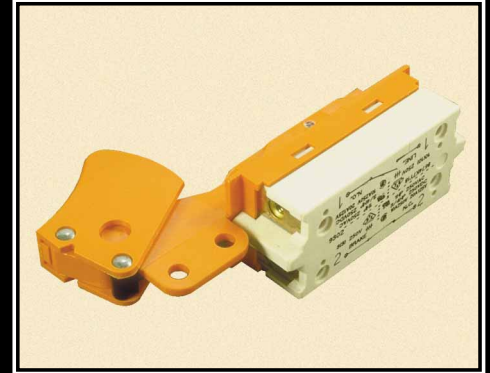





### Electronics



Page 2		<b>Approvals</b>
Page 3		<b>AC Variable Speed and On/Off Trigger Switches</b> Page 4 - AC Variable Speed Switches Page 6 - Dust Resistant AC Variable Speed Switches Page 7 - On/Off Switches
Page 9		<b>DC Variable Speed, Two Speed and On/Off Trigger Switches</b> Page 9 - In-Line Cordless Tool Switches Page 11 - " L " Style Cordless Power Tool Switches Page 12 - On/Off Switches For Cordless Tools
Page 13		<b>Industrial Tool Switches</b> Page 14 - Industrial Dynamic Brake Switches Page 15 - Industrial On/Off Switches Page 16 - AC/DC Industrial Dust Resistant Switches
Page 17		<b>Custom Power Tool Switches</b>

- It is buyer's responsibility to determine the suitability of the particular device for its application, and Tyco Electronics makes no warranties, and assumes no liability as to the suitability or sufficiency for the buyer's application of the device.
- Ratings and switch performance are valid only on devices which have not been subjected to unauthorized modifications or misapplications.
- Dimensional drawings are available upon request.



In most cases our Power Tool Switches are designed to and approved by U.L. and CSA for 125V applications. Many of our switches are also designed to, and approved by European Electrical Standards.



**U.S.A. UL Recognized**  
*Listing Number: Switches - E24354 or File E1148, WOYR2 1609 Indicator - E70176, E2702*



**Canada CSA - Canadian Standards Associations**  
*Listing Number: LR10538 or 45995, 9002 Class 6241*



**Germany VDE - Verband Deutscher Elektrotechniker**  
*Listing Number: 36088 or 6498-440*



**United Kingdom BEAB - British Electrotechnical Approvals Board**  
*Listing Number: CS0005*



**France UTE - Union Technique de L'Électricité**  
*Listing Number: 16416/16417*



**Sweden SEMKO - Svenska Elektriska Materielkontrollanstalten AB**  
*Listing Number: 8415051*



**Norway NEMKO - Norges Elektriske Materielkontroll**  
*Listing Number: 80790*



**Denmark DEMKO - Danmarks Elektriske Materielkontrol**  
*Listing Number: 47804*



**Netherlands KEMA - N.V. Tot Keuring van Electrotechnische Materialen**  
*Listing Number: LTI 84.8014*



**Finland FEMKO - Sahkotarkastuslaitos Ry Elektriska Inspektoratet RF**  
*Listing Number: 072053-01/02*



**Switzerland Schweizerischer Electrotechnischer Verein**



**Austria Österreichischer Verband für Elektrotechnik**



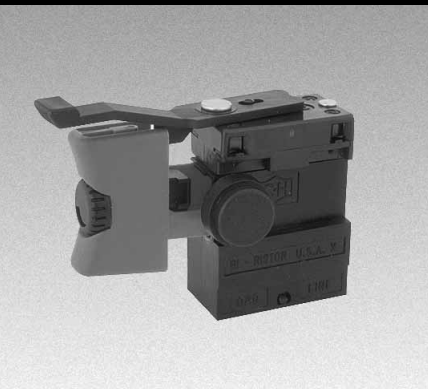
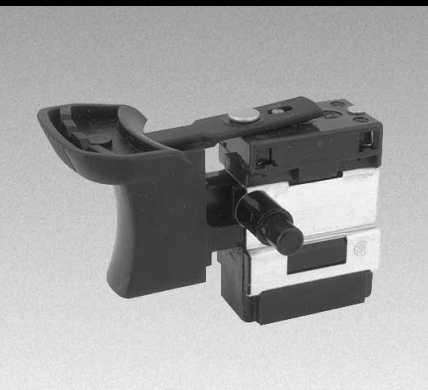
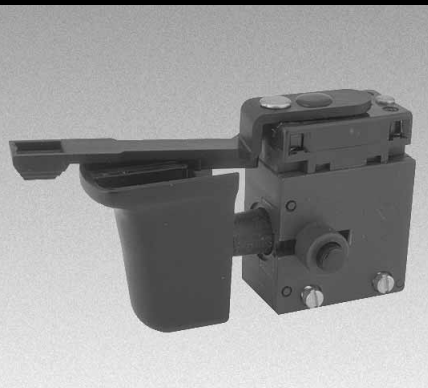
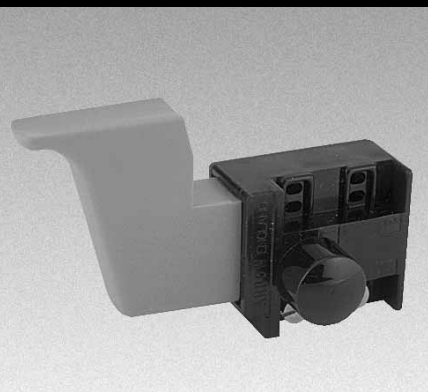
**Italy IMQ - Istituto Italiano del Marchio di Qualità**

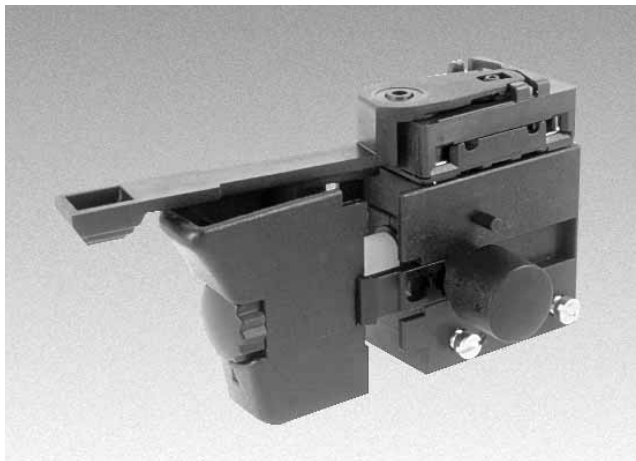


**Japan JETL - Japan Electrical Testing Laboratory**

**APPROVAL MARKS**

AC VARIABLE SPEED & ON/OFF  
TRIGGER SWITCHES





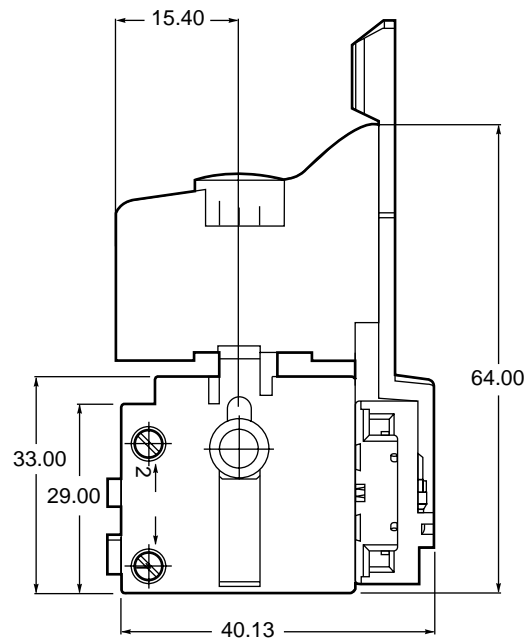
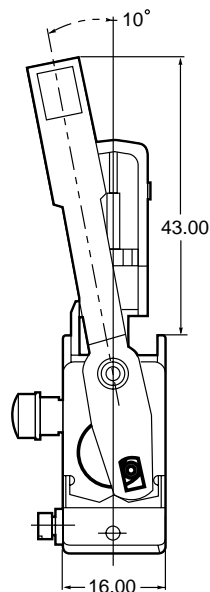
**J SERIES**

**STANDARD FEATURES**

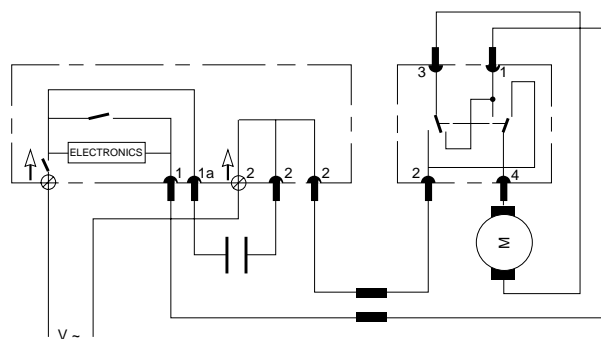
- Single pole, single throw
- Half wave circuit
- Screw termination for line connector
- Plug-in termination for motor connector
- Plug-in termination for capacitor connector
- Rating:
- 6(6)A 250VAC or 10A 125VAC
- UL/CSA approved
- Most European Approvals

**OPTIONS**

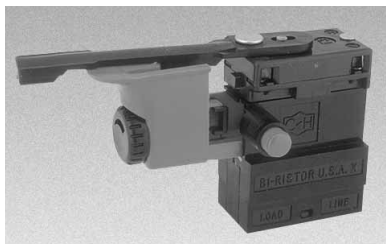
- Lock on or no-lock
- Various trigger styles and colors
- Reversing
- Various reversing lever styles and colors
- Full wave circuit
- Bypass contact (optional on full wave variants)
- With or without speed dial



**WIRING DIAGRAM**







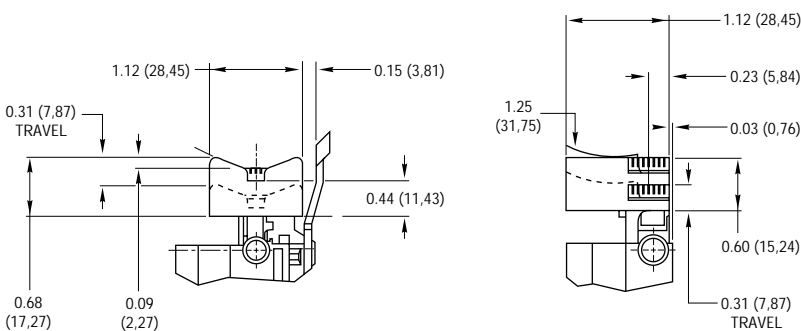
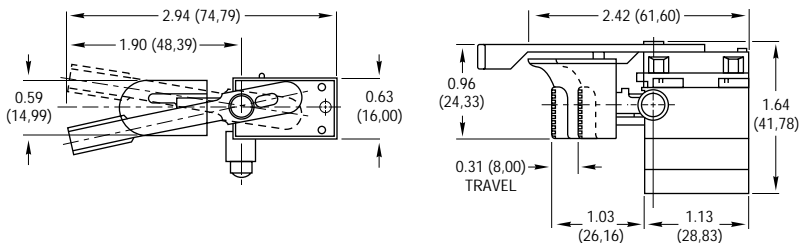
**8600/8601 SERIES IN-LINE**

**STANDARD FEATURES**

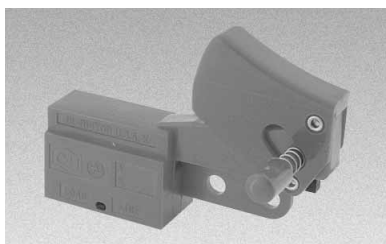
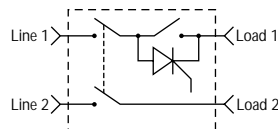
- Double pole, single throw
- Rating:  
4A 125VAC
- Plug-in lead termination
- UL/CSA approved
- Half wave speed control circuit

**OPTIONS**

- Ratings:  
6A 125VAC  
8A 125VAC  
4A 250VAC
- Resistor only output
- Various trigger styles and colors
- Various lock button styles and colors
- Reversing
- Various reversing lever styles and colors
- External electronics
- Two speed circuit
- Vari-lock trigger
- Lock on
- Single pole
- Bussing



**WIRING DIAGRAM**



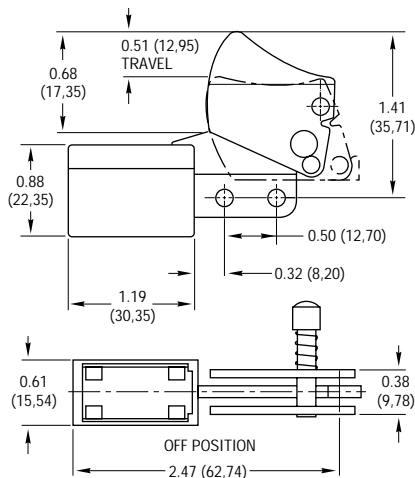
**8622 SERIES OVERHANGING**

**STANDARD FEATURES**

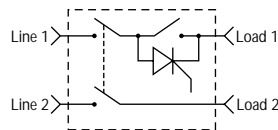
- Double pole, single throw
- Rating:  
4A 125VAC
- Plug-in lead termination
- UL/CSA approved
- Half wave speed control circuit

**OPTIONS**

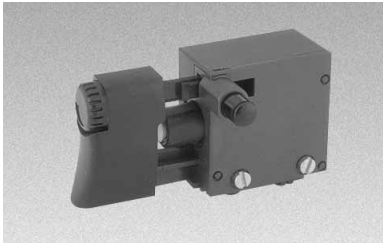
- Ratings:  
6A 125VAC  
8A 125VAC  
4A 250VAC
- Resistor only output
- Various trigger styles and colors
- Various lock button styles and colors
- Lock off
- External electronics
- Two speed circuit
- Lock on
- Single pole
- Bussing



**WIRING DIAGRAM**



**DUST RESISTANT AC VARIABLE SPEED SWITCHES**



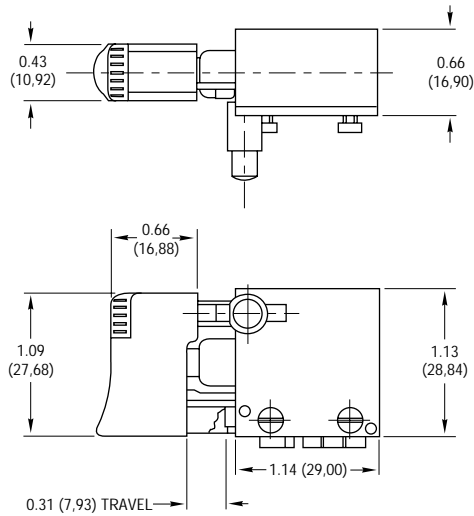
**8653 SERIES U.S. PACKAGE**

**STANDARD FEATURES**

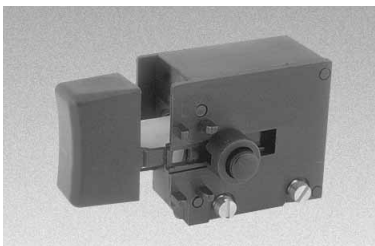
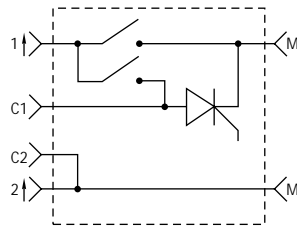
- Single pole, single throw
- Half wave circuit
- Screw or plug-in termination for line connector
- Plug-in termination for motor connector
- Plug-in termination for capacitor connector
- Ratings:  
8A 125VAC or  
4A 250VAC
- UL/CSA approved
- Most European Approvals

**OPTIONS**

- Resistor only output
- Lock on
- Various trigger styles and colors
- Reversing
- Various reversing lever styles and colors
- External electronics



**WIRING DIAGRAM**



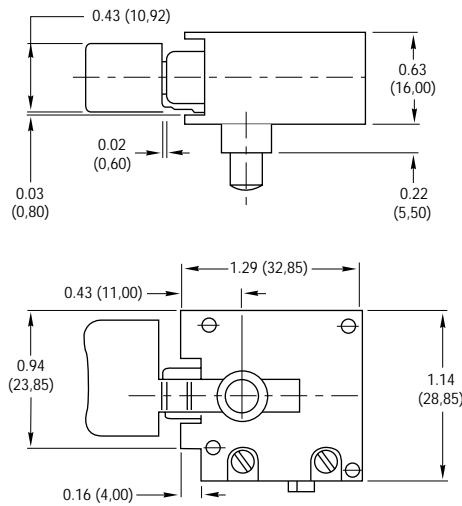
**8653 SERIES EUROPEAN PACK-**

**STANDARD FEATURES**

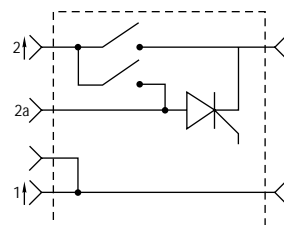
- Single pole, single throw
- Half wave circuit
- Screw or plug-in termination for line connector
- Plug-in termination for motor connector
- Plug-in termination for capacitor connector
- Ratings:  
8A 125VAC or  
4A 250VAC
- UL/CSA approved
- Most European Approvals

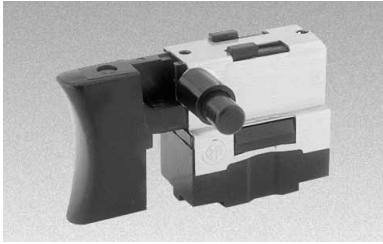
**OPTIONS**

- Resistor only output
- Lock on
- Various trigger styles and colors
- Reversing
- Various reversing lever styles and colors
- External electronics



**WIRING DIAGRAM**





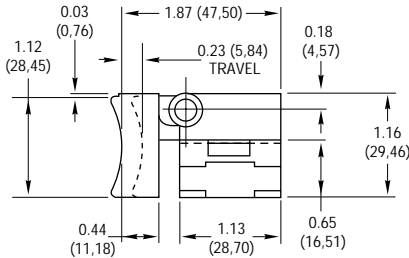
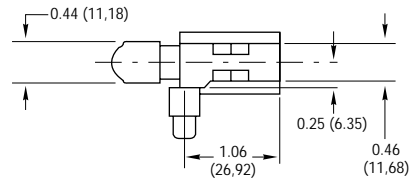
**8316 SERIES**

**STANDARD FEATURES**

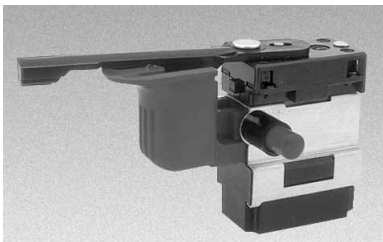
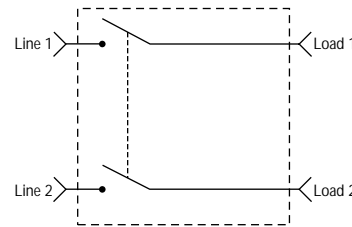
- Double pole, single throw
- Ratings:  
6A 125VAC/DC  
3A 250VAC/DC
- Plug-in terminals
- UL/CSA approved

**OPTIONS**

- Lock on
- Reversing
- Various trigger styles and colors
- Various reversing lever styles and colors
- Various lock button styles and colors



**WIRING DIAGRAM**



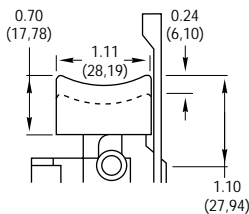
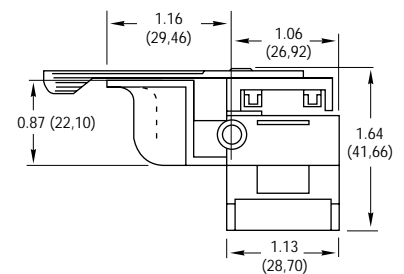
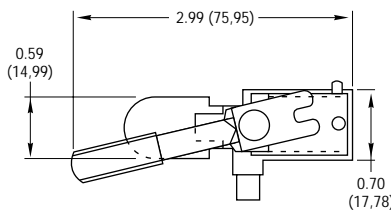
**8332 SERIES**

**STANDARD FEATURES**

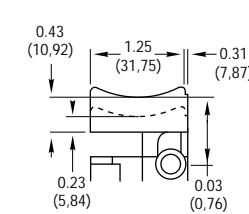
- Single pole, single throw
- Ratings:  
12A 125VAC  
6A 250VAC
- Plug-in terminals
- UL/CSA approved

**OPTIONS**

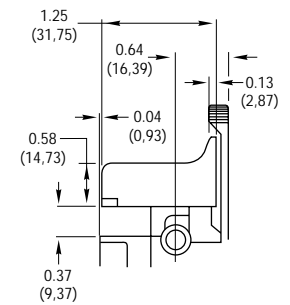
- Lock on
- Lock off
- Reversing
- Various trigger styles and colors
- Various reversing lever styles and colors
- Various lock button styles and colors



STYLE 2

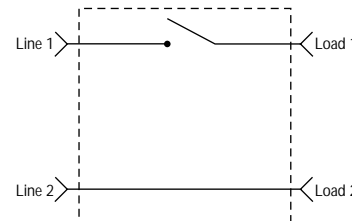


STYLE 3

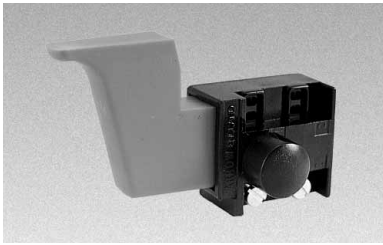


STYLE 4

**WIRING DIAGRAM**







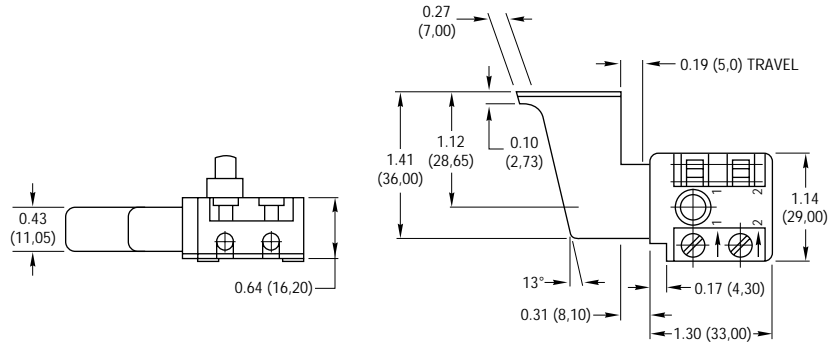
**140 SERIES**

**STANDARD FEATURES**

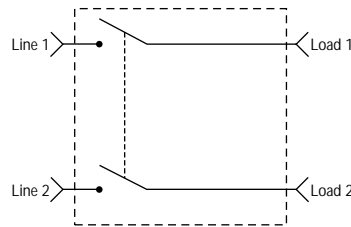
- Double pole, single throw
- Ratings:  
10A 125VAC  
8(8) 250VAC
- UL/CSA approved
- Most European approvals

**OPTIONS**

- Lock on
- Lock off
- Plug-in and/or screw terminals
- Various trigger styles and colors
- Various lock button styles and colors



**WIRING DIAGRAM**



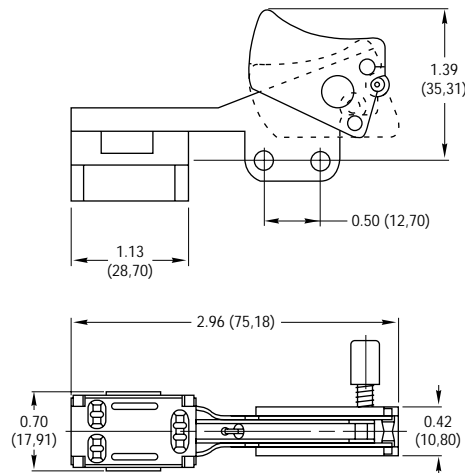
**7721 SERIES**

**STANDARD FEATURES**

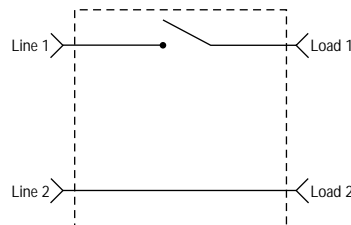
- Single pole, single throw with internal buss connector
- Plug-in terminals 18-20 AWG wire
- Ratings:  
10A 125VAC  
5A 250VAC
- UL/CSA approved

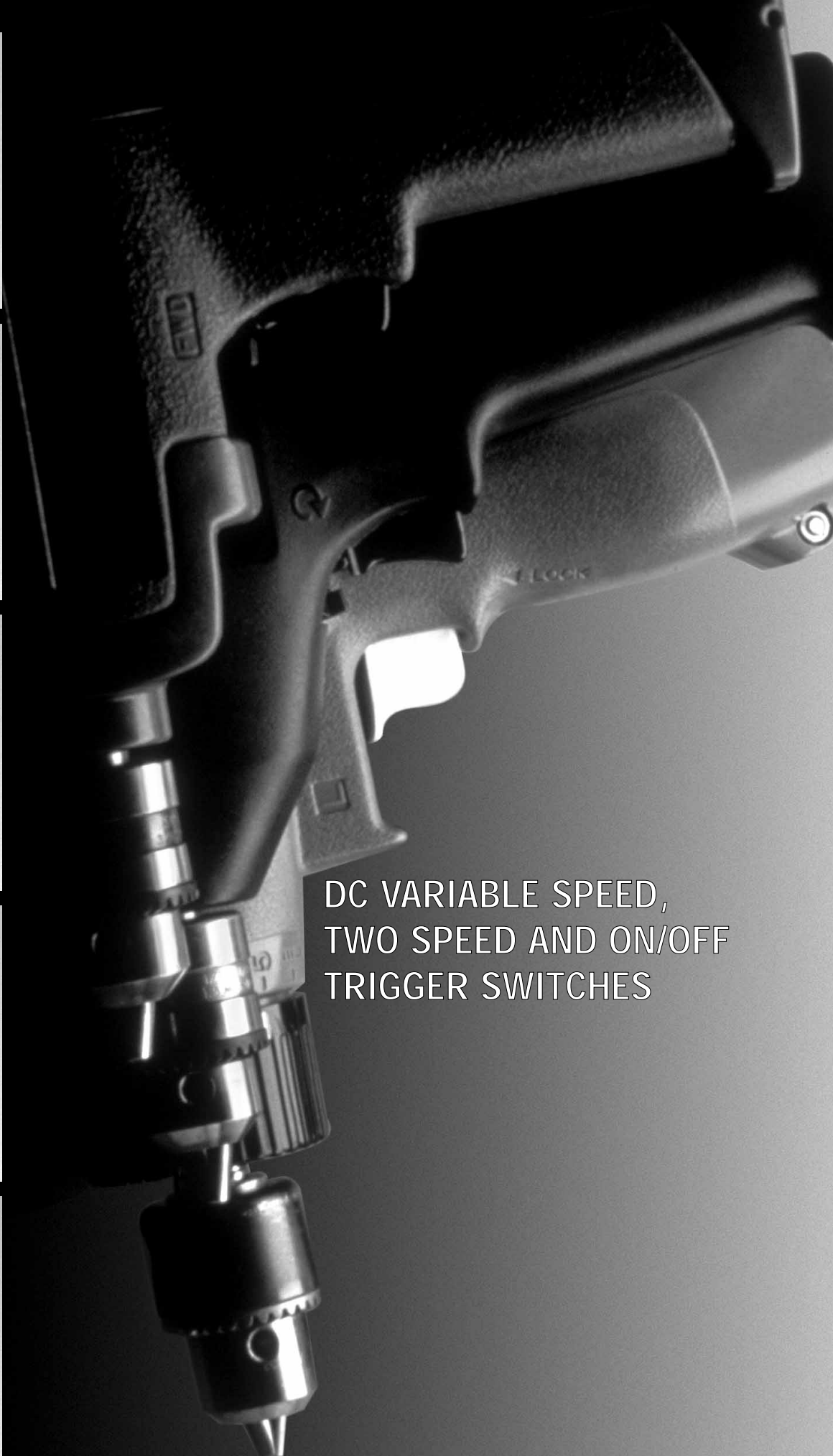
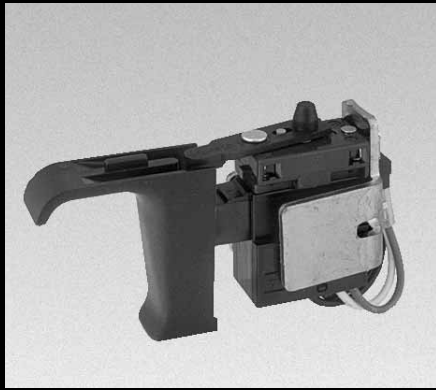
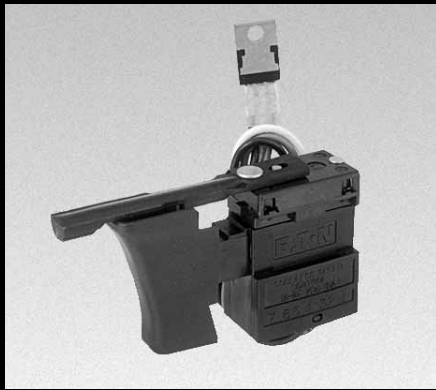
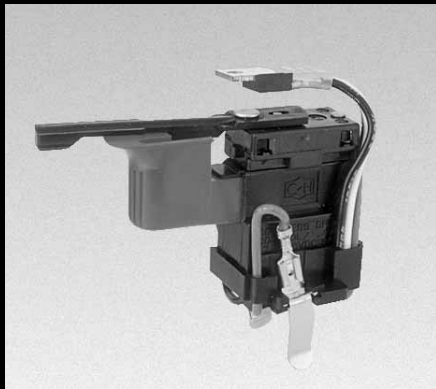
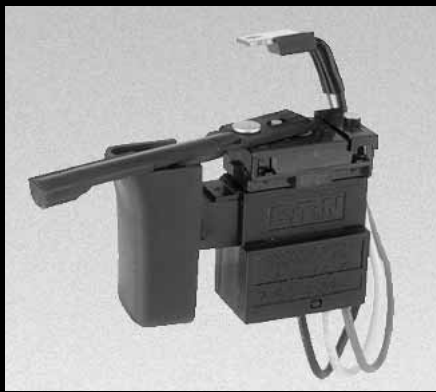
**OPTIONS**

- Lock on
- Various trigger and lock pin styles and colors
- Padlock hole trigger

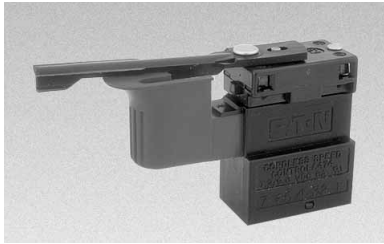


**WIRING DIAGRAM**





DC VARIABLE SPEED,  
TWO SPEED AND ON/OFF  
TRIGGER SWITCHES



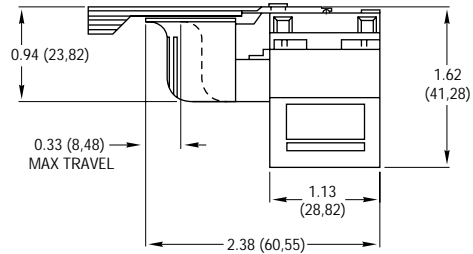
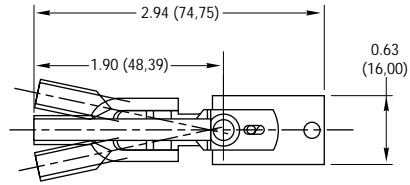
**8649 SERIES TWO SPEED**

**STANDARD FEATURES**

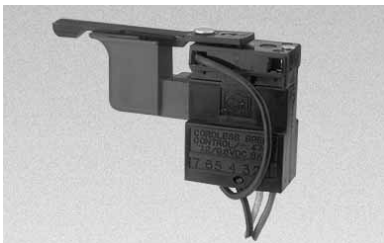
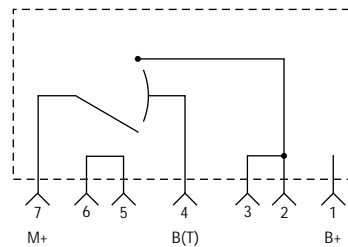
- Single pole
- Rating:  
10A 12VDC
- UL approved
- Plug-in termination

**OPTIONS**

- Three position reversing switch with center off
- Various trigger styles and colors
- Battery terminals
- Various reversing lever styles and colors
- Higher ratings



**WIRING DIAGRAM**



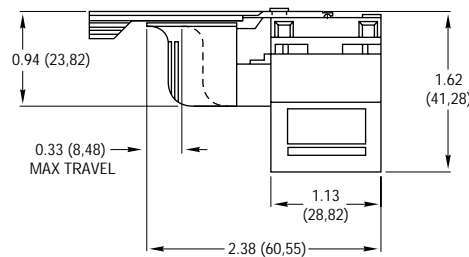
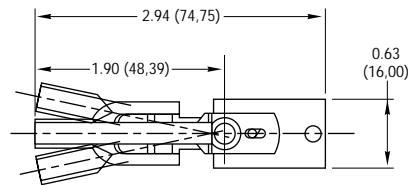
**8649 SERIES VARIABLE SPEED**

**STANDARD FEATURES**

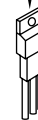
- Single pole
- Rating:  
10A 12VDC
- UL approved
- Plug-in termination

**OPTIONS**

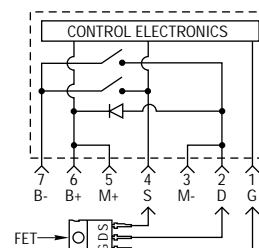
- Three position reversing switch with center off
- Various trigger styles and colors
- Dynamic brake circuit
- Battery terminals
- Special speed control circuits for:  
7.2, 9.6, 12, 24 and 36VDC
- Wide range of power FETS
- Various reversing lever styles and colors
- Higher ratings



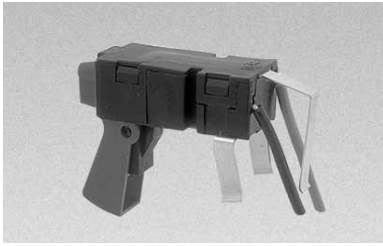
POWER MOSFET



**WIRING DIAGRAM**



**"L" STYLE CORDLESS POWER TOOL SWITCHES**



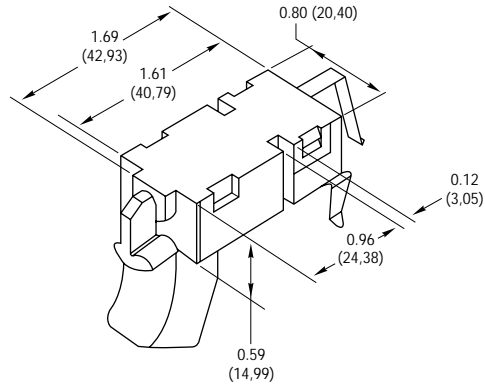
**8667 SERIES TWO SPEED**

**STANDARD FEATURES**

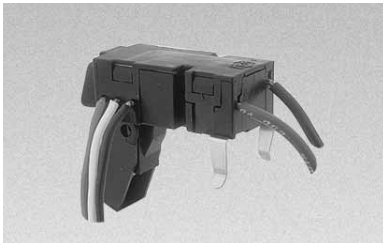
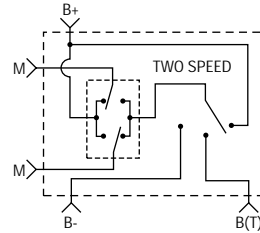
- Single pole
- Rating:  
10A 12VDC
- UL approved
- Integral three position reversing switch with center off

**OPTIONS**

- Various trigger styles and colors
- Solder lug line terminal
- Battery clip line terminals
- Various reversing lever styles and colors
- Higher ratings



**WIRING DIAGRAM**



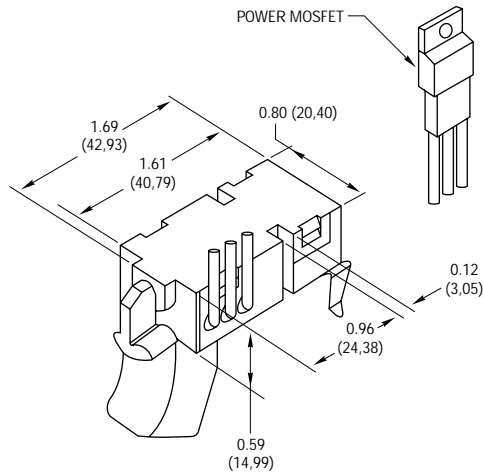
**8666 SERIES VARIABLE SPEED**

**STANDARD FEATURES**

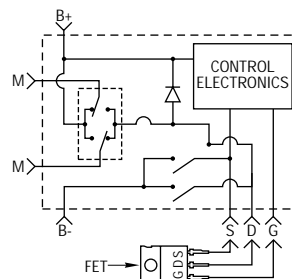
- Single pole
- Rating:  
10A 12VDC
- UL approved
- Integral three position reversing switch with center off

**OPTIONS**

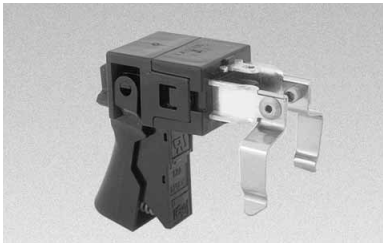
- Various trigger styles and colors
- Dynamic brake circuit
- Solder lug line terminal
- Battery clip line terminals
- Special speed control circuits for: 7.2, 9.6, 12, 24 and 36VDC
- Wide range of power FETS
- Various reversing lever styles and colors
- Higher ratings



**WIRING DIAGRAM**



**ON/OFF SWITCHES FOR CORDLESS POWER TOOLS**



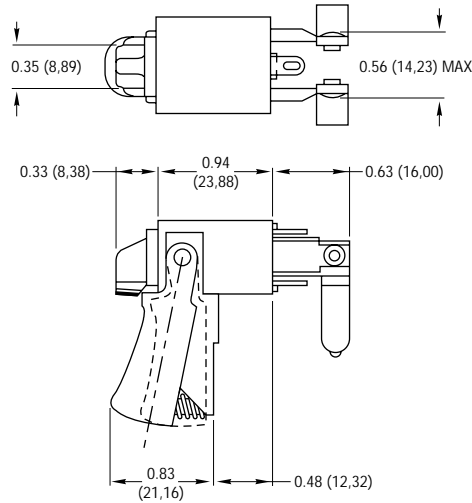
**8669 SERIES ON/OFF**

**STANDARD FEATURES**

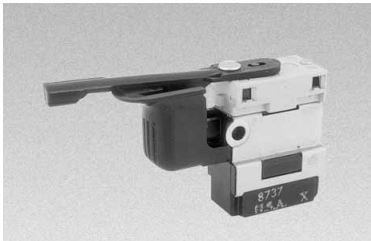
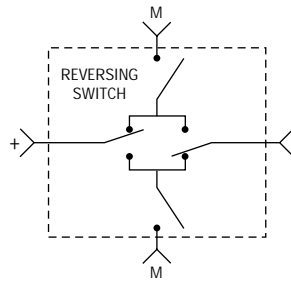
- Single pole, single throw
- Rating:  
12A 12VDC
- UL approved
- Wiping action contacts
- Integral three position reversing lever with center off

**OPTIONS**

- Termination – solder lug or battery clips
- Various trigger styles and colors
- Various reversing lever styles and colors
- Higher ratings



**WIRING DIAGRAM**



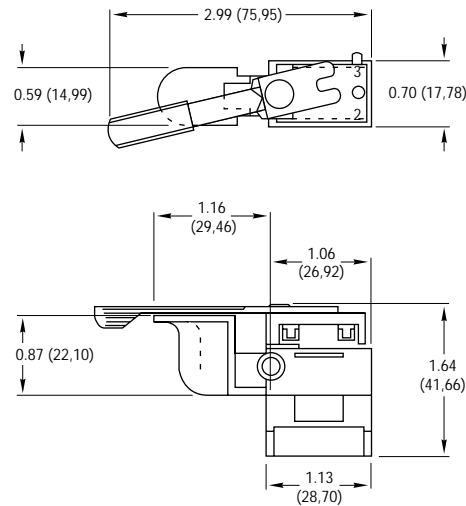
**8332 SERIES ON/OFF**

**STANDARD FEATURES**

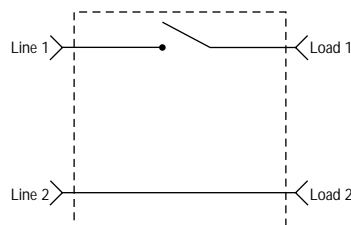
- Single pole, single throw
- Rating:  
14A 12VDC
- UL approved
- Wiping action contacts
- Three position reversing lever with center off

**OPTIONS**

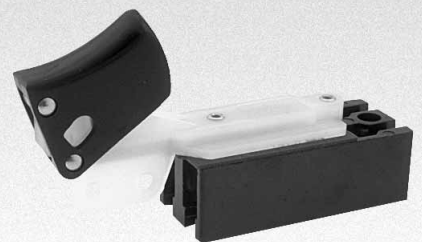
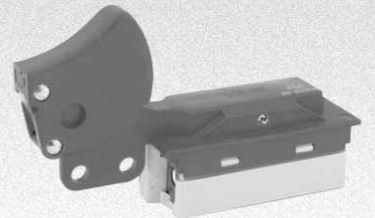
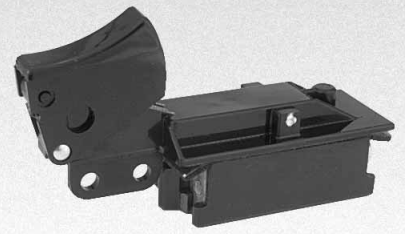
- Termination – plug-in or battery clamp
- Various trigger styles and colors
- Various reversing lever styles and colors
- Higher ratings



**WIRING DIAGRAM**



# INDUSTRIAL TOOL SWITCHES







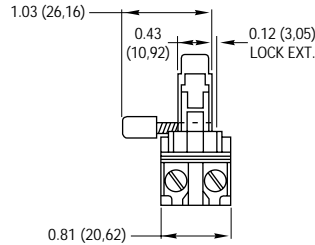
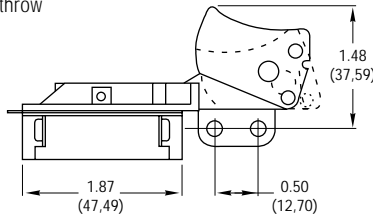
**8670 BASIC**

**STANDARD FEATURES**

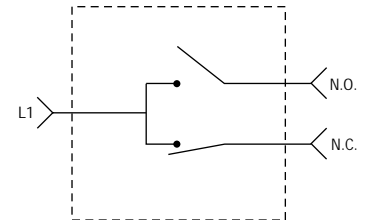
- Single pole, double throw
- Ratings:  
16A 125VAC/DC  
8A 250VAC/DC
- Screw terminals
- UL/CSA approved

**OPTIONS**

- Lock on
- Lock off
- Various trigger styles and colors
- Padlock hole



**— WIRING DIAGRAM —**



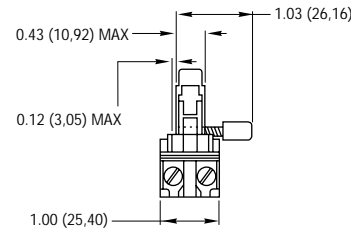
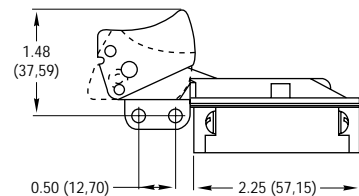
**8671 BASIC**

**STANDARD FEATURES**

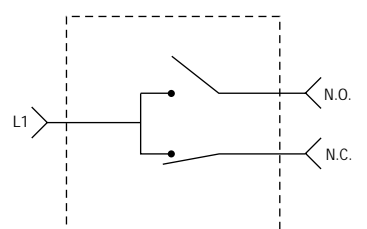
- Single pole, double throw
- Ratings:  
20A 125VAC/DC  
10A 250VAC/DC
- Screw terminals
- UL/CSA approved

**OPTIONS**

- Lock on
- Lock off
- Various trigger styles and colors
- Padlock hole



**— WIRING DIAGRAM —**



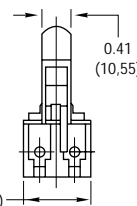
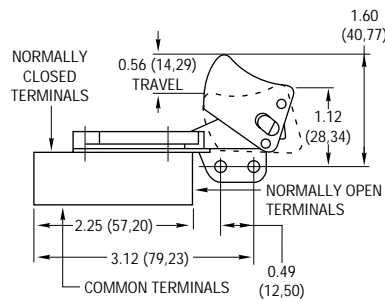
**81766 BASIC**

**STANDARD FEATURES**

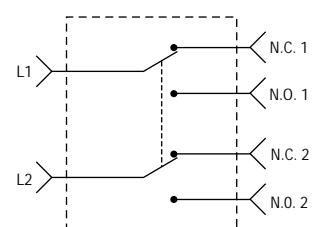
- Double pole, double throw (6 Terminals)
- Ratings:  
20A 125VAC  
10A 250VAC
- Screw terminals
- UL/CSA approved

**OPTIONS**

- Padlock hole
- Wrap around terminal insulator



**— WIRING DIAGRAM —**





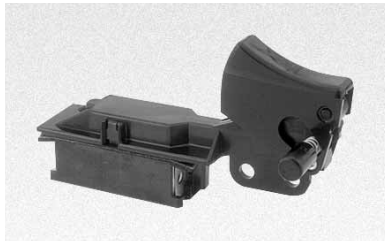
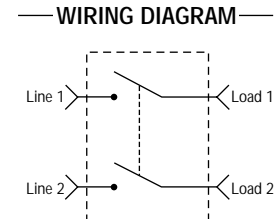
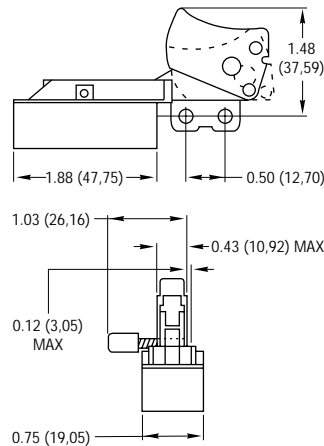
**7440 SERIES**

**STANDARD FEATURES**

- Double pole, single throw
- Ratings:  
16A 125VAC/DC  
8A 250VAC/DC
- UL/CSA approved

**OPTIONS**

- Various circuits
- Various trigger styles and colors
- Padlock hole
- Lock on
- Lock off



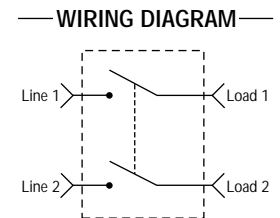
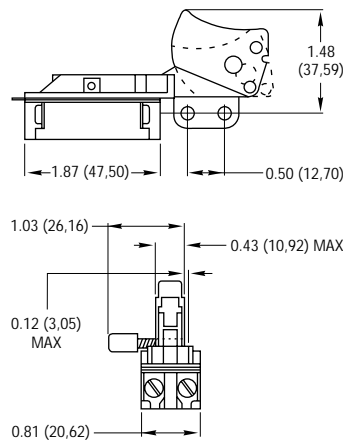
**8632 SERIES**

**STANDARD FEATURES**

- Double pole, single throw
- Ratings:  
16A 125VAC/DC  
8A 250VAC/DC
- UL/CSA approved
- VDE approved

**OPTIONS**

- Various circuits
- Various trigger styles and colors
- Padlock hole
- Spade terminals
- Lock on
- Lock off



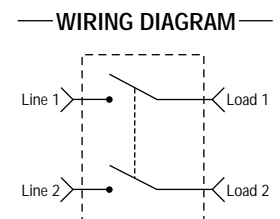
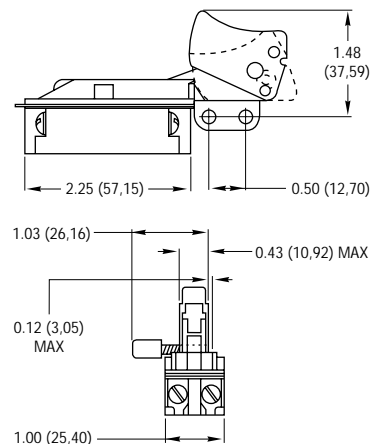
**8652 SERIES**

**STANDARD FEATURES**

- Double pole, single throw
- Ratings:  
20A 125VAC/DC  
10A 250VAC/DC
- UL/CSA approved
- VDE approved

**OPTIONS**

- Various circuits
- Various trigger styles and colors
- Padlock hole
- Spade terminals
- Lock on
- Lock off





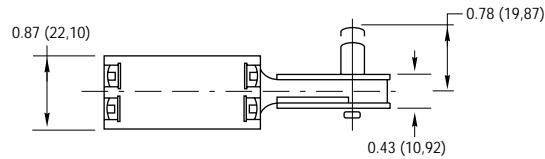
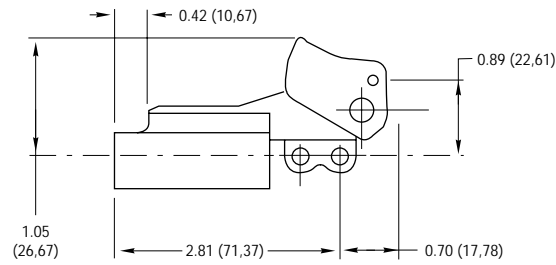
**PT SERIES**

**STANDARD FEATURES**

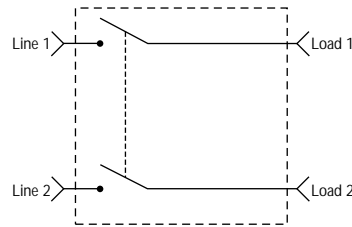
- Double pole, single throw
- UL/CSA approved:  
22A 125VAC/DC  
10A 250VAC/DC
- VDE 10 (10) 250V
- Screw termination

**OPTIONS**

- Alternate circuits  
i.e.: SPDT and alternate action
- Lock on
- Padlock hole
- Various trigger styles and colors



**WIRING DIAGRAM**



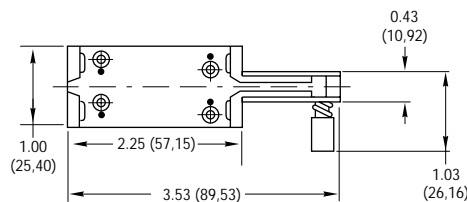
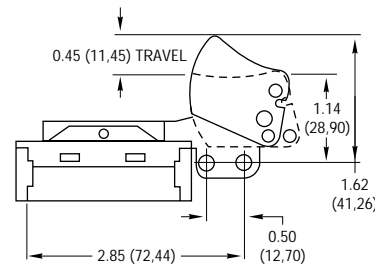
**8672/8674 SERIES**

**STANDARD FEATURES**

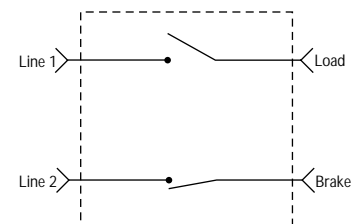
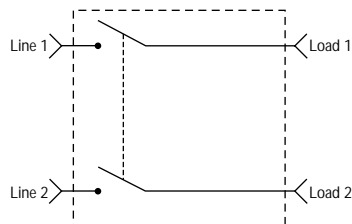
- Double pole, single throw
- UL/CSA approved:  
20A 125VAC/DC  
10A 250VAC/DC
- VDE 10 (10) 250V
- Screw termination – 8672/8674 also can accept plug-in

**OPTIONS**

- Alternate circuits  
i.e.: SPDT and alternate action
- Lock on
- Lock off
- Padlock hole
- Various trigger styles and colors



**WIRING DIAGRAM**



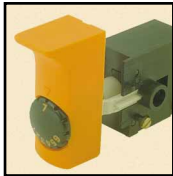
**8672 SERIES**

**8674 SERIES**

***tyco***

*Electronics*

Tyco Electronics Corporation  
Harrisburg, PA 17105



P O W E R T O O L S W I T C H E S