

C. J. [Signature] / 10-15-92
 APPROVED BY/DATE
 REV. 2

SAFETY ORGANIZATION(S):

THIS FILTER HAS BEEN FORMALLY RECOGNIZED, CERTIFIED OR APPROVED BY THE LISTED AGENCY. THEREFORE, ALL TEST/REQUIREMENTS SPECIFIED IN THE LATEST REVISION OF THE FOLLOWING AGENCY STANDARDS HAVE BEEN MET.

UL RECOGNIZED
 CSA CERTIFIED
 VDE APPROVED

OPERATING SPECIFICATIONS:

LINE VOLTAGE/CURRENT:
 10 AMP., 120/250 VAC
 8 AMP./40°C, 250VAC
 50-60Hz
 LINE FREQUENCY,
 MAX. LEAKAGE CURRENT, EACH
 LINE TO GROUND
 1.25mA @ 120V 60Hz
 2.10mA @ 250V 50Hz
 OPERATING AMBIENT TEMP. RANGE,
 -10°C TO +40°C @ RATED CURRENT, I_R

IN AN AMBIENT, T_a, HIGHER THAN 40°C, THE MAXIMUM OPERATING CURRENT, I_o, IS AS FOLLOWS:

$$I_o = I_r \sqrt{\frac{95 - T_a}{45}}$$

RELIABILITY SPECIFICATIONS:

STORAGE TEMPERATURE:
 -25°C TO +85°C
 HUMIDITY,
 21 DAYS @ 40°C 95% RH
 CURRENT OVERLOAD TEST,
 6 TIMES RATED CURRENT FOR 8 SECONDS
TEST SPECIFICATIONS:
 INDUCTANCE:
 N 7.89 mH NOMINAL
 L 7.83 mH NOMINAL
 CAPACITANCE, MEASURED @ 1 KHz, 0.25 VAC MAX., 25°C ±1°C
 LINE TO GROUND,
 .0155µF ±20%
 LINE TO LINE,
 1.15 µF ±20%
 DISCHARGE RESISTOR,
 270KΩ
 LINE/GROUND AND LINE/LINE
 INSULATION RESISTANCE
 5000 MΩ (MIN) AT 100 VDC
 (W/O DISCHARGE RESISTOR)
 20°C AND 50% RH

RECOMMENDED RECEIVING INSPECTION HIPOUT:

LINES TO GROUND,
 2250 VDC FOR 1 MINUTE
 LINE TO LINE,
 1450 VDC FOR 1 MINUTE

FILTER APPROVAL:

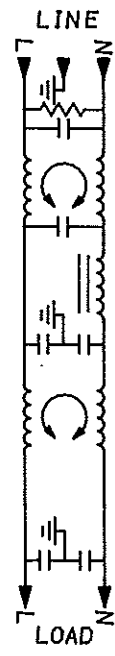
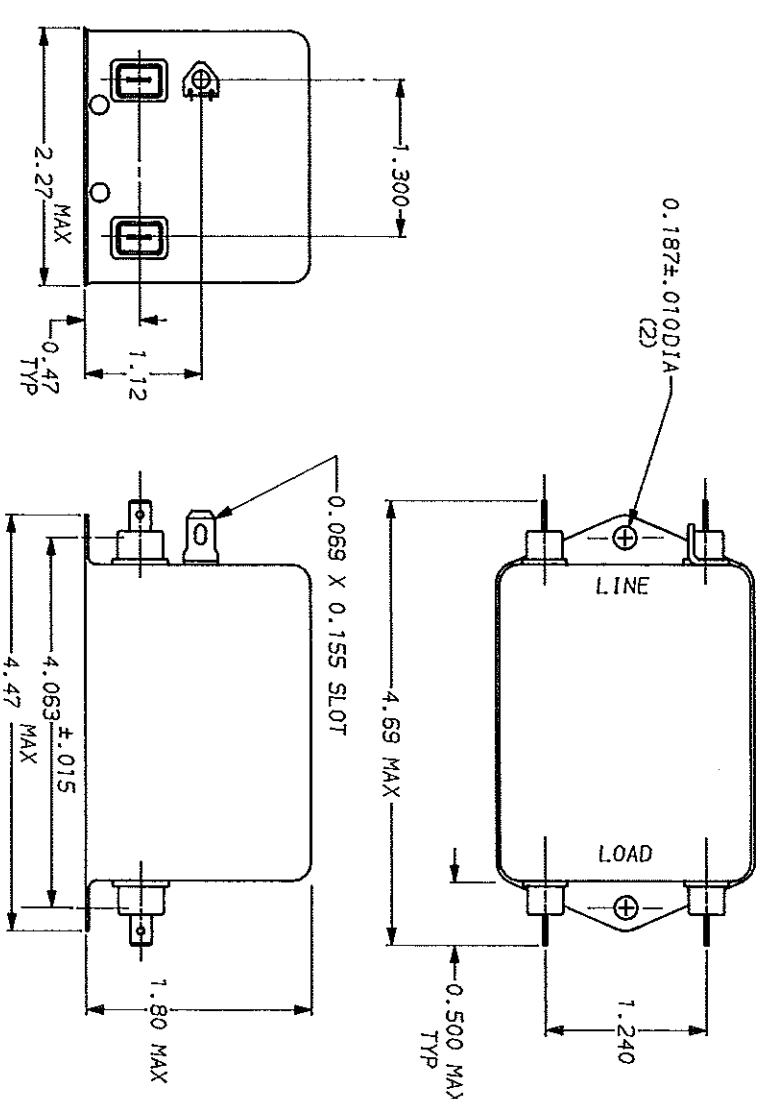
THE BEST WAY TO SELECT AND QUALIFY A FILTER IS FOR YOUR ENGINEERING TO TEST THE UNIT IN YOUR EQUIPMENT.

TOLERANCE EXCEPT AS NOTED

DECIMAL, .XXX .XX .X ANGLES
 METRIC, ± .025 ± .1°

MATERIAL:
 AS SUPPLIED

FINISH:



50p - 50p (MINIMUM) INSERTION LOSS

FREQUENCY MHZ	01	03	04	05	1	15	5	10	20	30	
COMMON dB	8	8	8	8	44	55	75	70	70	60	55
DIFF. dB	8	8	8	8	35	45	72	70	72	75	70

This document is property to CORCOM INC. and is not to be reproduced nor used for manufacturing purposes except on CORCOM's order or prior written consent.



POWER LINE FILTER

SCALE NTS	DATE 8-5-90	DWG. NO. 10VN1.02	REV. 02
50% OF CFW	DESIGNED CFW		