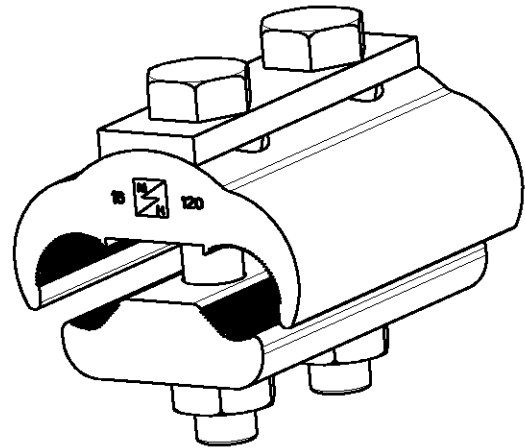
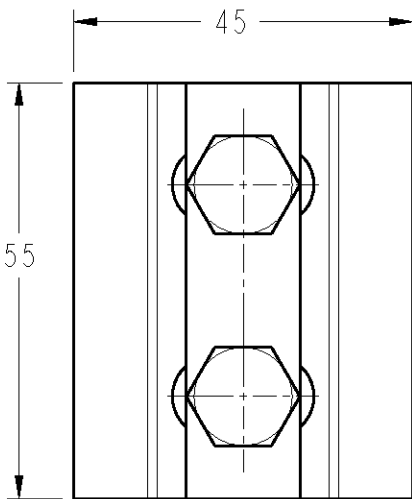
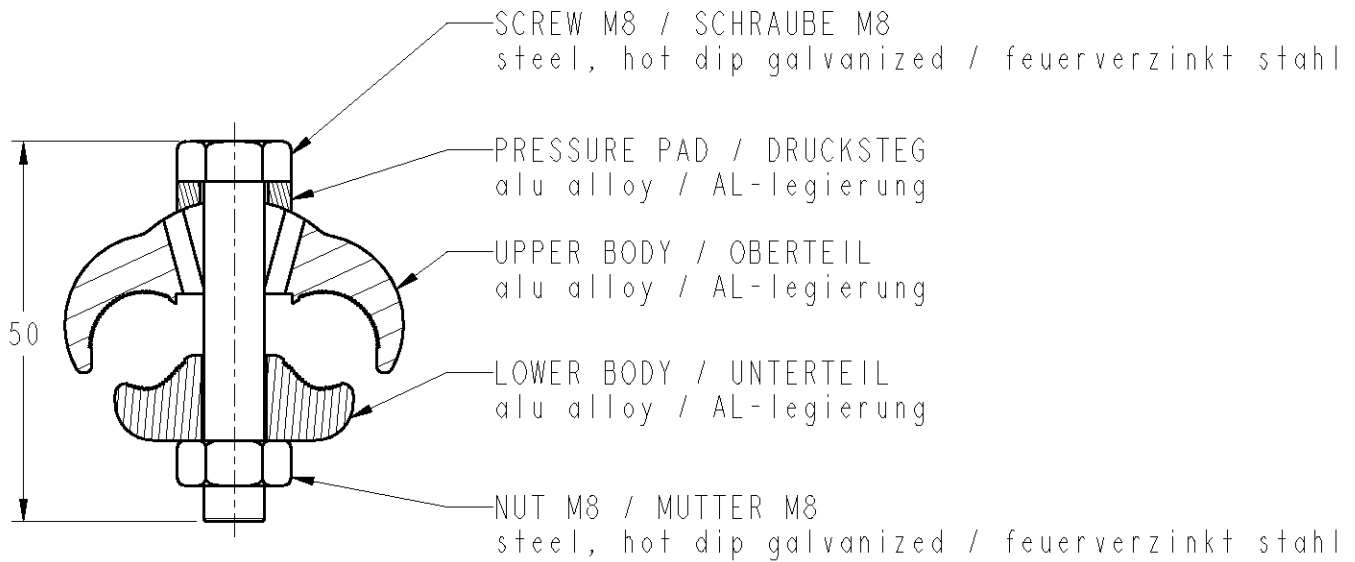


LOC	DIST	REVISIONS				
P	LTR REV	DESCRIPTION MODIFICATIONS	DATE	DWN DESS.	APVD APP.	
FH	2	1	CREATION	21MAR2007	FB AG	



Capacity / Klemmbereich : AL/ST 16/2.5-95/15 mm²
 AL 16-120 mm²
 Tightening torque / Anzugsmoment : 22 N.m

TOLERANCES UNLESS OTHERWISE SPECIFIED	-
TOLERANCES NON SPECIFIEES:	-
FINISH	-
FINITION	-

THIS DRAWING IS UNPUBLISHED. / DIFFUSION RESTREINTE.
 BY TYCO ELECTRONICS CORPORATION. ALL RIGHTS RESERVED. / TOUS DROITS RESERVES.
 COPYRIGHT 2007

DIMENSIONS: mm TOLERANCES UNLESS OTHERWISE SPECIFIED / TOLERANCES NON SPECIFIEES (SUIV. NB DE DECIMALES): 0 PLC / DEC: ±0 1 PLC / DEC: ±0.1 2 PLC / DEC: ±0.2 3 PLC / DEC: ±0.3 4 PLC / DEC: ±0.4 ANGLES ±	DWN/DESSINE F. BOARD 21MAR2007 CHK/VERIFIE G. NEDELLEC APVD/APPROUVE A. GUICHARD PRODUCT SPEC SPEC. PRODUIT - APPLICATION SPEC SPEC. APPLICATION - WEIGHT MASSE APPROX. - g	MATERIAL MATIERE - FINISH FINITION -	Tyco Electronics SIMEL PRODUCTS NAME TITRE HEL-3591 SIZE FORMAT A4 CAGE CODE - DRAWING No PLAN C=1-1198999-4 RESTRICTED TO RESERVE A -
	CUSTOMER DRAWING / PLAN CLIENT UNIQUEMENT POUR REFERENCE SCALE ECHELLE : SHEET FEUILLE : OF DE : REV :		