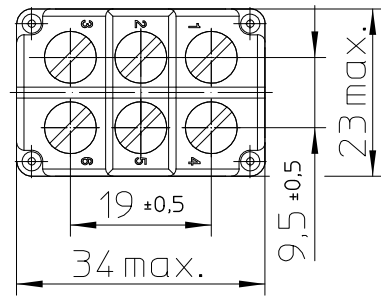
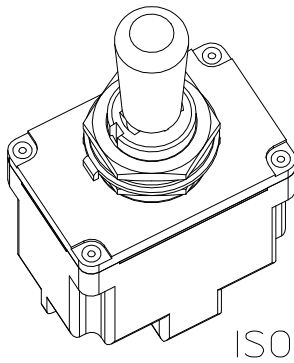
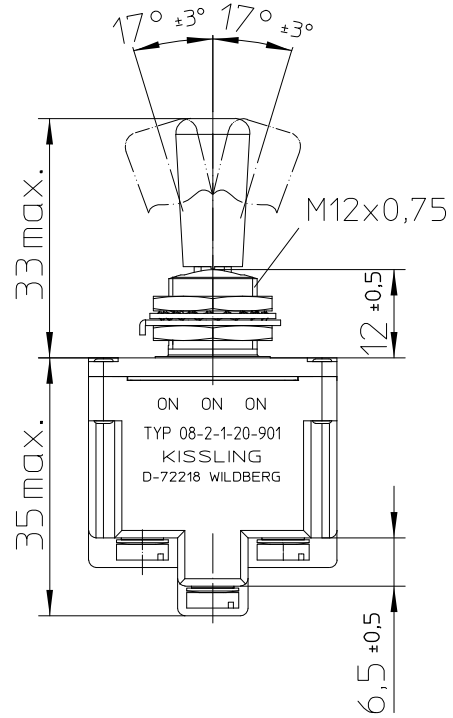


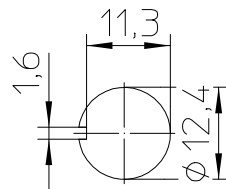
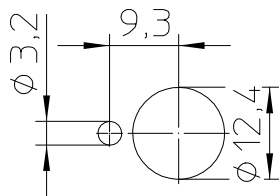
keyway opposite keyway



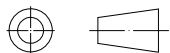
Mounting Detail

with locking ring

without locking ring

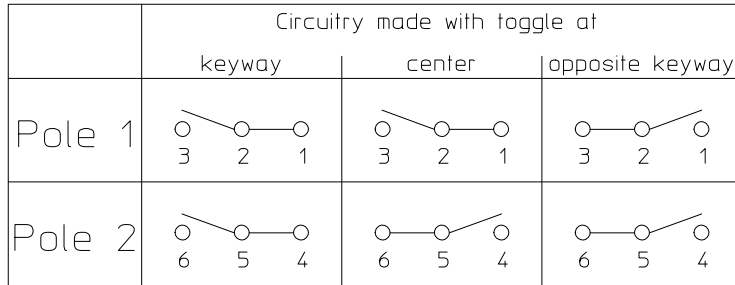


Third Angle Projection



	Date	Name	mm	Scale		Drawing No:
Drawn	24.08.2016	Weiro		1:1		08-2-1-20-901
Check	22.12.2016	Weiro	General Tolerances DIN ISO 2768 cL			NSN:

Circuit Diagram



Actuation

- locking keyway side
- locking center position
- locking opposite keyway side

Construction

- Material, Casing Duroplast GF
- Material, Cover GD-ZnAl4Cu1
- Connections Screws M3,5x6 ISO 1580
- Protection Interior IP 6K7 DIN 40 050 Part 9
- Connections IP 00 DIN 40 050 Part 9

Mechanical Data

- Actuating force 20N +/-5N
- Current carrying parts CuZn-Alloy
- Contacts Ag
- Ambient Temperature Range -55°C to +85°C
- Storage Temperature Range -65°C to +85°C
- Life Cycle iaw VG 95 210 Part 21, grade H 100.000 operations

Electrical Data

- Voltage 28 V DC ohmic Load 20A
- 28 V DC inductive Load at L/R = 5 ms 15A
- 28 V DC lamp Load 7A
- 115 V AC ohmic Load 15A
- 115 V AC inductive Load cos. Φ = 0,75, 15A
- 115 V AC lamp Load 4A
- Motor Load utilisation category AC3 (see DIN VDE 0660 Part 107) 5A

Min. Rating 12 V DC, 20 mA

It is recommended to use gold-plated contacts
for lower currents or voltages.

	Date	Name	mm	Scale		Drawing No:
Drawn	25.08.2016	Weiro		2:1		08-2-1-20-901
Check	22.12.2016	Weiro	General Tolerances			NSN: