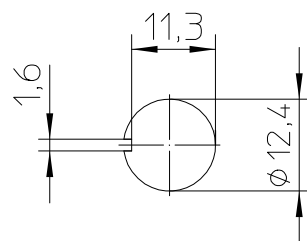
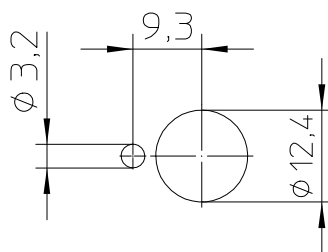
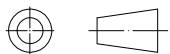
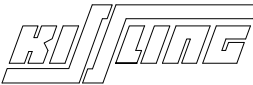


Mounting Detail  
with locking ring      without locking ring

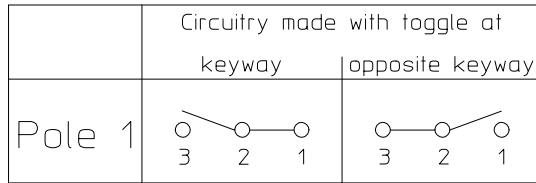


Third Angle Projection



|       |            |       |                                       |       |   |             |
|-------|------------|-------|---------------------------------------|-------|---|-------------|
|       | Date       | Name  | mm                                    | Scale |  | Drawing No: |
| Drawn | 01.12.2017 | WalzA |                                       | 1:1   |   | 07-1-1-13 D |
| Check | 01.12.2017 | Weiro | General Tolerances<br>DIN ISO 2768 cL |       |   | NSN:        |

## Circuit Diagram



## Actuation

locking keyway side  
locking opposite keyway side

## Locking Configuration

locked in keyway side  
locked in opposite keyway side

## Construction

Material, Casing .....Thermoplast GF  
 Material, Cover ..... GD-ZnAl4Cu1  
 Connections ..... Screws M3,5x6 ISO 1580  
 Protection Interior ..... IP 6K5 DIN 40 050 Part 9  
 Connections ..... IP 00 DIN 40 050 Part 9

## Mechanical Data

Current carrying parts ..... CuZn-Alloy  
 Contacts ..... Ag  
 Ambient Temperature Range ..... -35°C to +60°C  
 Storage Temperature Range ..... -35°C to +80°C  
 Life Cycle iaw VG 95 210 Part 21; grade H ..... 100.000 operations

## Electrical Data

Voltage 28 V DC ohmic Load ..... 20A  
 28 V DC inductive Load ..... at L/R = 5 ms 15A  
 28 V DC lamp Load ..... 7A  
 115 V AC ohmic Load ..... 15A  
 115 V AC inductive Load ..... cos.  $\phi$  = 0,75, 15A  
 115 V AC lamp Load ..... 4A  
 Motor Load ..... utilisation category AC3 (see DIN VDE 0660 Part 107) 5A  
 Min. Rating ..... 12 V DC, 20 mA

It is recommended to use gold-plated contacts  
for lower currents or voltages.

|       |            |       |                                       |       |       |             |
|-------|------------|-------|---------------------------------------|-------|-------|-------------|
|       | Date       | Name  | mm                                    | Scale |       | Drawing No: |
| Drawn | 01.12.2017 | WalzA |                                       | 1:1   |       | 07-1-1-13 D |
| Check | 01.12.2017 | Weiro | General Tolerances<br>DIN ISO 2768 cL |       | NSN.: |             |