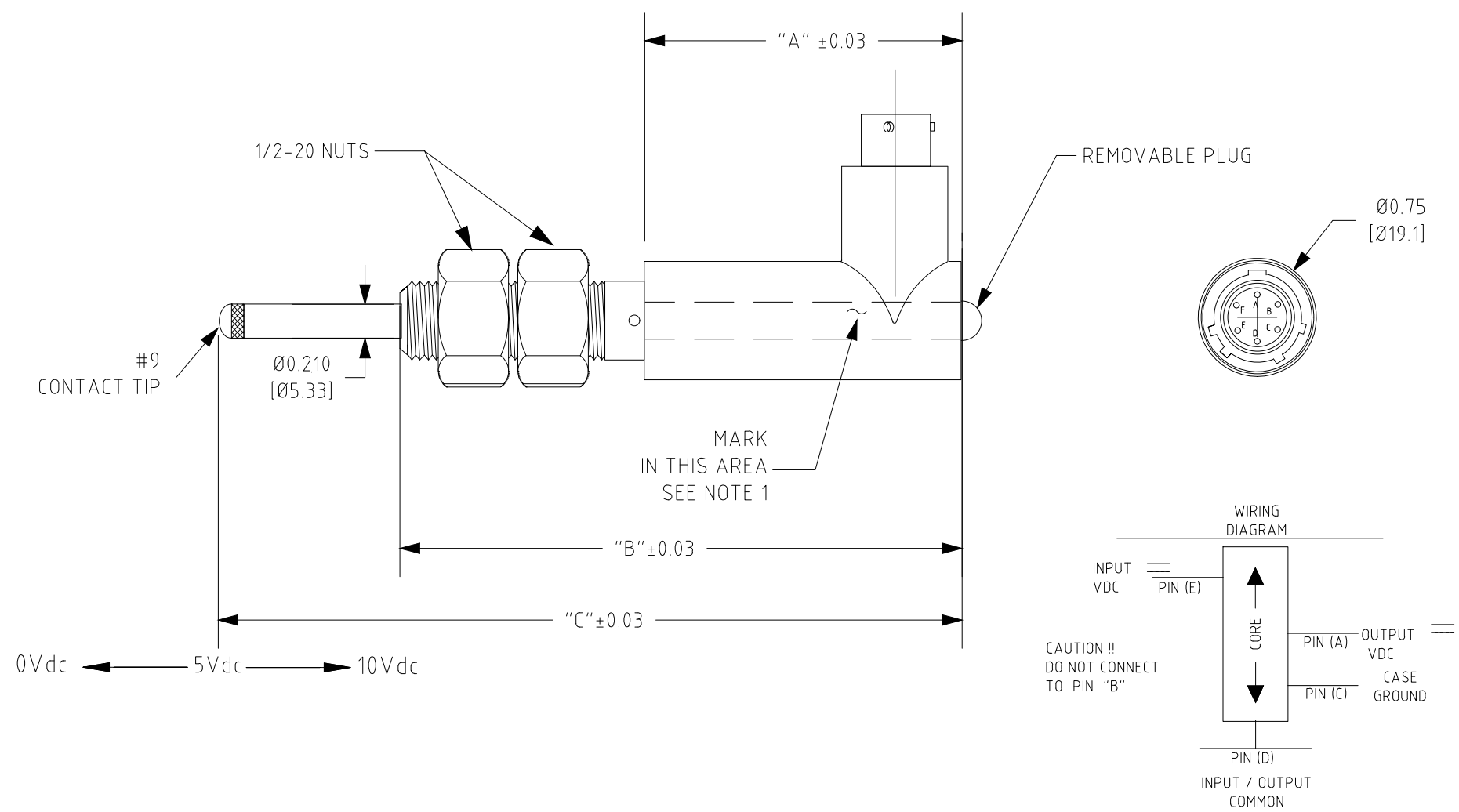
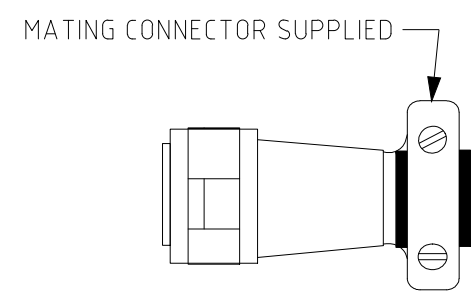
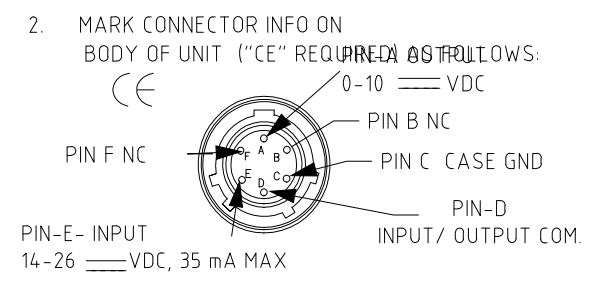


| | | | | |
|-----------|-----|--------------------------------------|-------------|----------|
| REVISIONS | | DWG NO. 03298XXXXXXXX | | |
| ZONE | REV | DESCRIPTION | DATE | APPROVED |
| -- | -- | INITIAL RELEASE | 21-FEB-2008 | MFG |
| | A | CHG LIN /DWG CORRECTION,SEE ECN 1815 | 13-SEP2012 | MFG |
| | B | REVISED PER ECN # 2088 | 26-MAR-2015 | |
| | B1 | REDRAWN WITH NO CHANGES | 18-JUN-2020 | |

| COMMON SPECIFICATION | |
|-----------------------|-----------------------------|
| INPUT VOLTAGE | 24V DC (NOM) |
| INPUT VOLTAGE RANGE | 14-26 VDC |
| INPUT CURRENT | 35 mA (MAX) |
| OUTPUT VOLTAGE | 0-10 VDC ±2% FULL RANGE |
| LINEARITY ERROR | ±0.1% OF FULL RANGE (MAX) |
| NOISE RIPPLE | < 5 MICRO VOLTS RMS |
| OPERATING TEMPERATURE | -20°C to +85°C (0 TO 185°F) |
| OUTPUT IMPEDANCE | <200 OHMS |

NOTES:
 1. MARK THE FOLLOWING:
 TE CONNECTIVITY
 HERMOSILLO, MEXICO
 GHSER 750 XXXX
 SERIAL NO. XXXXX
 CAUTION! DO NOT CONNECT TO PIN B



| DESCRIPTION | LTR DIMENSIONS | | |
|----------------|----------------|---------------|---------------|
| | DIM "A" ±0.03 | DIM "B" ±0.03 | DIM "C" |
| GHSER 750 100 | 2.82 [71.6] | 4.36 [110.7] | 5.46 [138.7] |
| GHSER 750 250 | 3.44 [87.4] | 4.99 [126.7] | 6.10 [154.9] |
| GHSER 750 500 | 4.20 [106.7] | 5.75 [146.1] | 6.86 [174.2] |
| GHSER 750 1000 | 6.70 [170.2] | 9.87 [250.7] | 11.36 [288.5] |
| GHSER 750 2000 | 8.20 [208.3] | 11.37 [289] | 13.78 [350] |
| GHSER 750 4000 | 11.71 [297.4] | 17.19 [436.6] | 21.75 [552.5] |

| DESCRIPTION | STANDARD | | METRIC | |
|----------------|-------------------|----------------------------|-------------------|--------------------------|
| | ELECTRICAL STROKE | SCALE FACTOR V/INCH (NOM.) | ELECTRICAL STROKE | SCALE FACTOR V/mm (NOM.) |
| GHSER 750 100 | 0 - 0.10 INCH | 100 VDC | 0 - 2.5 mm | 4.0 VDC |
| GHSER 750 250 | 0 - 0.25 INCH | 40 VDC | 0 - 6.0 mm | 1.67 VDC |
| GHSER 750 500 | 0 - 0.50 INCH | 20 VDC | 0 - 12.5 mm | 0.8 VDC |
| GHSER 750 1000 | 0 - 1.0 INCH | 10 VDC | 0 - 25 mm | 0.4 VDC |
| GHSER 750 2000 | 0 - 2.0 INCH | 5.0 VDC | 0 - 50 mm | 0.2 VDC |
| GHSER 750 4000 | 0 - 4.0 INCH | 2.5 VDC | 0 - 100 mm | 0.1 VDC |

| MODEL OPTIONS (STD. - 006) | | | |
|----------------------------|----------------|------------------------|----------------|
| STANDARD | | METRIC DISPL. / (-006) | |
| DESCRIPTION | PART NO. | DESCRIPTION | PART NO. |
| GHSER 750 100 | 0323 8000 0000 | GHSER 750 100-006 | 0323 8000 0006 |
| GHSER 750 250 | 0323 8010 0000 | GHSER 750 250-006 | 0323 8010 0006 |
| GHSER 750 500 | 0323 8020 0000 | GHSER 750 500-006 | 0323 8020 0006 |
| GHSER 750 1000 | 0323 8030 0000 | GHSER 750 1000-006 | 0323 8030 0006 |
| GHSER 750 2000 | 0323 8040 0000 | GHSER 750 2000-006 | 0323 8040 0006 |
| GHSER 750 4000 | 0323 8050 0000 | GHSER 750 4000-006 | 0323 8050 0006 |

This Drawing & Specifications are the property of TE Connectivity. DO NOT COPY without the written approval of TE Connectivity.

| | | | | | | |
|--|------------------|----------------------|--|-------------------|--------------------------|-----------|
| UNLESS OTHERWISE SPECIFIED, DIMENSIONS ARE IN INCHES. TOLERANCES ARE: ANGLES : ± 2° FRACTIONS : ± 1/64 DECIMALS : .XX ± .010 .XXX ± .005 | DRAFTER: ALJ | DATE: 08-FEB-2008 | | | | |
| | CHECKER: | DATE: | | | | |
| MATERIAL: | APPROVED: MFG | DATE: 21-FEB-2008 | TITLE: OUTLINE, GHSER-750 SERIES | | | |
| | APPROVED: | DATE: | | | | |
| FINISH: | APPROVED: | DATE: | SIZE B | FSCM NO. 06WW0 | DWG NO. 03298XXXXXXXX | REV B1 |
| | | | SCALE: NTS (1/1) | SHEET NO: 1 OF 1 | | |

[] DENOTES MILLIMETER