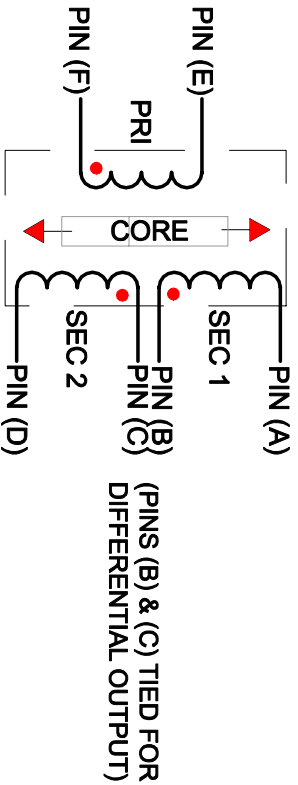
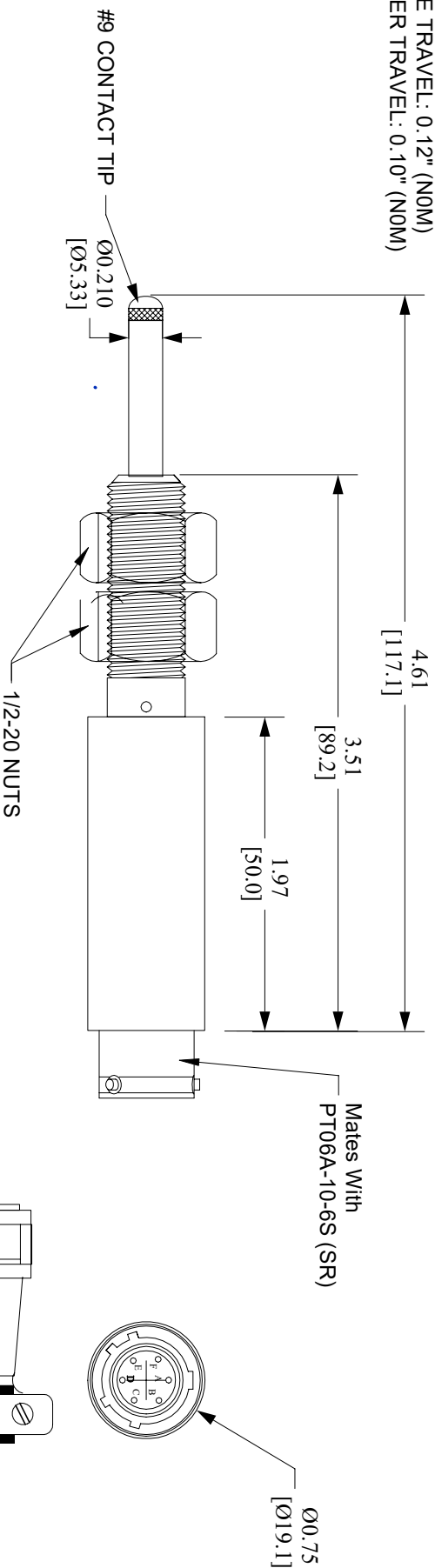


SPECIFICATIONS

INPUT VOLTAGE: 3.0 V rms (NOM)
 INPUT FREQUENCY: 2.5 kHz (NOM)
 ELECTRICAL STROKE: +/- 0.050"
 SENSITIVITY: 6.1 mV/VOLT/001"
 LINEARITY: 0.25% OF FULL RANGE (MAX)
 PHASE SHIFT: +1°
 IMPEDANCE:
 PRIMARY: 326 OHMS (NOM)
 SECONDARY: 2000 OHMS (NOM)
 OPERATING TEMPERATURE: 0 TO 221° F
 REPEATABILITY: 0.00002"
 SHOCK SURVIVAL: 1000 g's, 11ms
 VIBRATION (DC TO 2000 Hz): 30 g's rms
 PRE TRAVEL: 0.12" (NOM)
 OVER TRAVEL: 0.10" (NOM)

REVISIONS

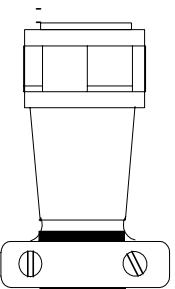
REV.	DESCRIPTION	DATE:	APPR.
A	REDRAWN & CORRECTED DWG NO. WAS 030910010000	2/9/98	R.E.A.
B	SHORTENED ALL LENGTHS .040" ECR/ECHN # 222	6/28/00	R.E.A.
C	REVISED OVER STROKE PER ECR/ECHN #615.	10/23/03	R.E.A.
C1	REDRAW WITH NO CHANGES	04/29/20	



WIRING DIAGRAM

[] DENOTES MILLIMETER

PT06-10-6S (SR) or equiv.
MATING CONNECTOR SUPPLIED



UNLESS OTHERWISE SPECIFIED
ALL DIMENSIONS ARE IN INCHES
TOLERANCES ARE:
ANGLES: ±0.5° FRACTIONS: ±1/64
DECIMALS
XX = ±.01
XXX = ±.005

DRAFTSMAN: DATE: 1 AUG 97
 R.E.A.
 CHECKER: DATE:
 APPROVED: DATE:
 APPROVED: DATE:


MACRO SENSORS
 Your sensor business partner...
 GHSA 750 050
 OUTLINE

This Drawing and Specifications are the property of Macro Sensors, Div of Howard A. Shenavitz Technologies, Inc. DO NOT COPY without the written approval of Macro Sensors.

C.A.G.E. No. 06WW0
 APPROVED: DATE:
 APPROVED: DATE:

DRAWING No. 030900010000
 SCALE: NONE
 SHEET No. 1 of 1

MATERIAL: