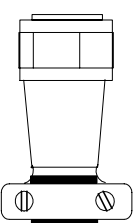
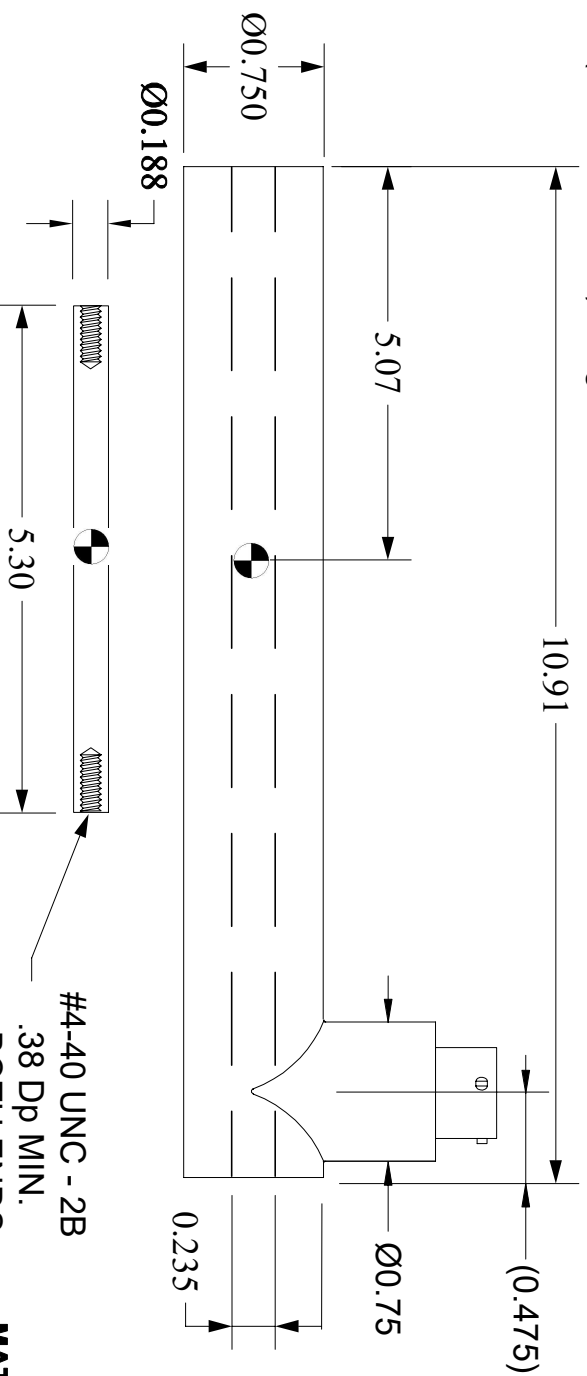


SPECIFICATIONS

- INPUT VOLTAGE: 3.0 V rms (NOM)
- INPUT FREQUENCY: 2.5 KHz (NOM)
- ELECTRICAL STROKE: ± 2.00 INCHES
- SENSITIVITY: 0.20 mV/VOLT/.001 INCH
- NON-LINEARITY: ± 0.25 % OF FULL RANGE (MAX)
- PHASE SHIFT: 0°
- IMPEDANCE:
 - PRIMARY: 574 OHMS (NOM)
 - SECONDARY: 281 OHMS (NOM)
- OPERATING TEMPERATURE: -20° TO 300° F
- SHOCK SURVIVAL: 1000 g's, 11ms
- VIBRATION (20 TO 2000 Hz): 20 g's rms

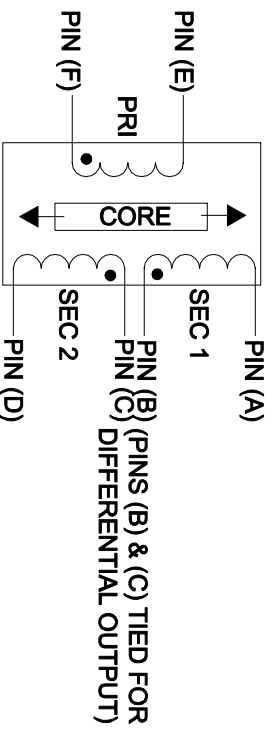
REVISIONS

REV.	DESCRIPTION	DATE:	APPR.
A	REVISED PER ECR/ECHN # 439	11/29/01	R.E.A.
A1	REDRAWN WITH NO CHANGES	09/22/20	



MATING CONNECTOR SUPPLIED

DENOTES CENTER OF CORE AT ELECTRICAL MID POINT



WIRING DIAGRAM

MATERIAL:

UNLESS OTHERWISE SPECIFIED ALL DIMENSIONS ARE IN INCHES		DRAFTSMAN:	DATE:
TOLERANCES ARE:		R. E. A.	15 MAY 00
ANGLES:	FRACTIONS:	CHECKER:	DATE:
+/- 0.5 DEG.	+/- 1/64.	APPROVED:	DATE:
DECIMAL:		APPROVED:	DATE:
XX = +/- .01		APPROVED:	DATE:
.XXX = +/- .005		FINISH:	
<small>This Drawing and Specifications are the property of Micro Sensors, Div. of Howard A. Schwartz Technological, Inc. DO NOT COPY without the written approval of Micro Sensors.</small>			
TITLE		C.A.G.E. No.	
HSAR 750 2000		DRAWING No.	
OUTLINE		A 06WW0 010915050000	
SCALE:	NONE	SHEET No.	1 of 1