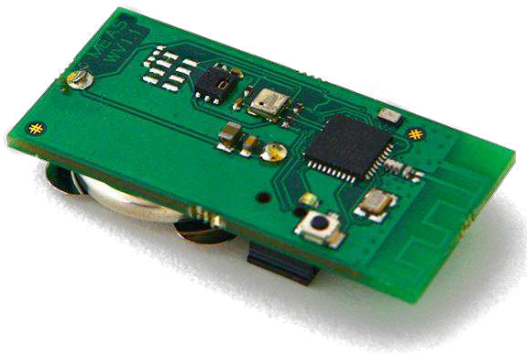


MEAS SENSOR TAG APP— INSTALLATION GUIDE FOR WINDOWS®

This document describes the installation of the Measurement Specialties sensor tag application for a Windows® based PC.



Contents

1	Installation	2
1.1	Prerequisite	2
1.2	Setup	2
2	MEAS Sensor Tag Software	6
2.1	COM Port configuration.....	6
2.2	Data acquisition.....	7
2.3	Data logging	10

Windows is a trademark.

1 INSTALLATION

1.1 Prerequisite

- MEAS sensor tag
- MEAS Bluetooth Low Energy USB Dongle
- Windows® computer

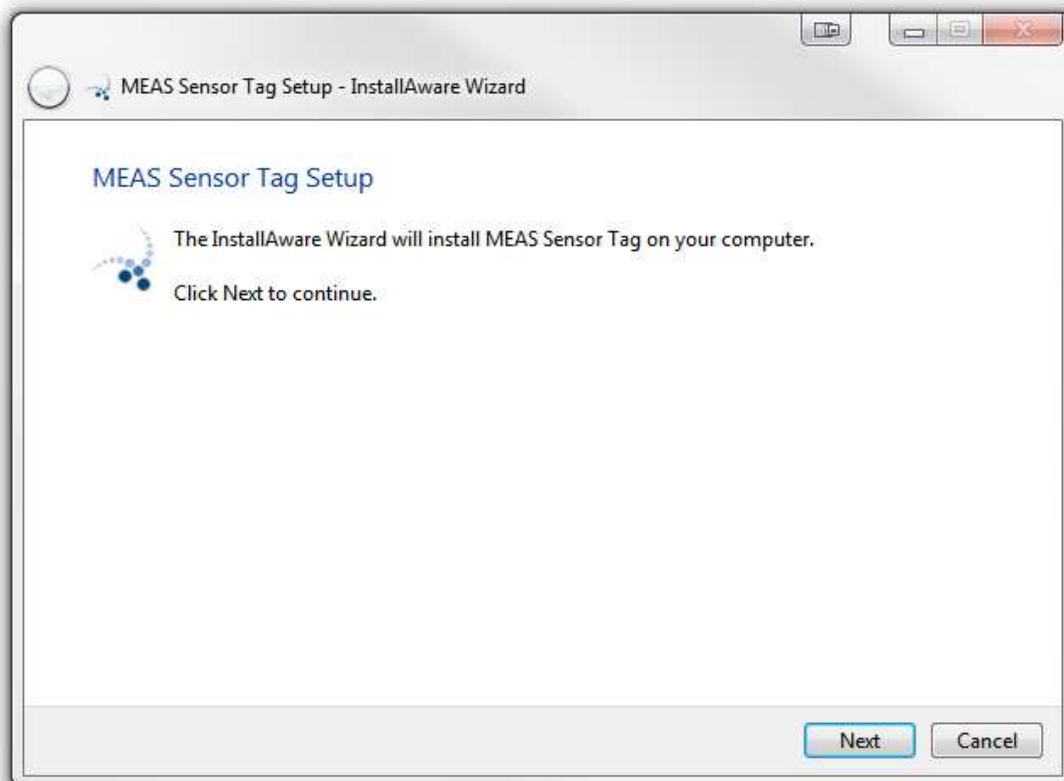
Do not plug in the MEAS Bluetooth Low Energy USB Dongle yet!

1.2 Setup

Launch the provided installation setup wizard



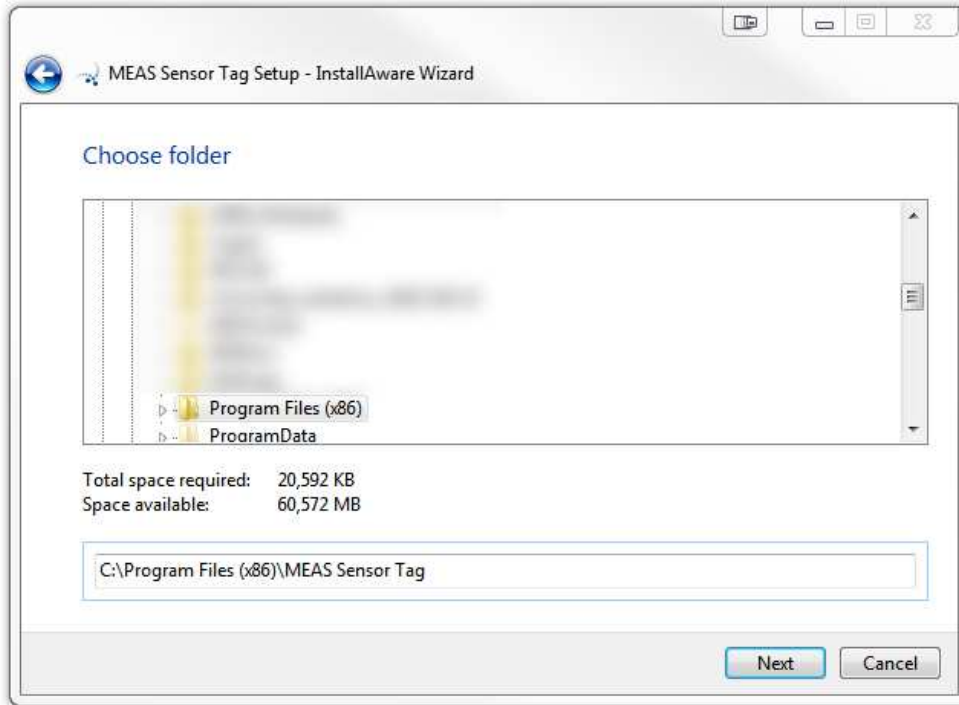
Follow the installation wizard process



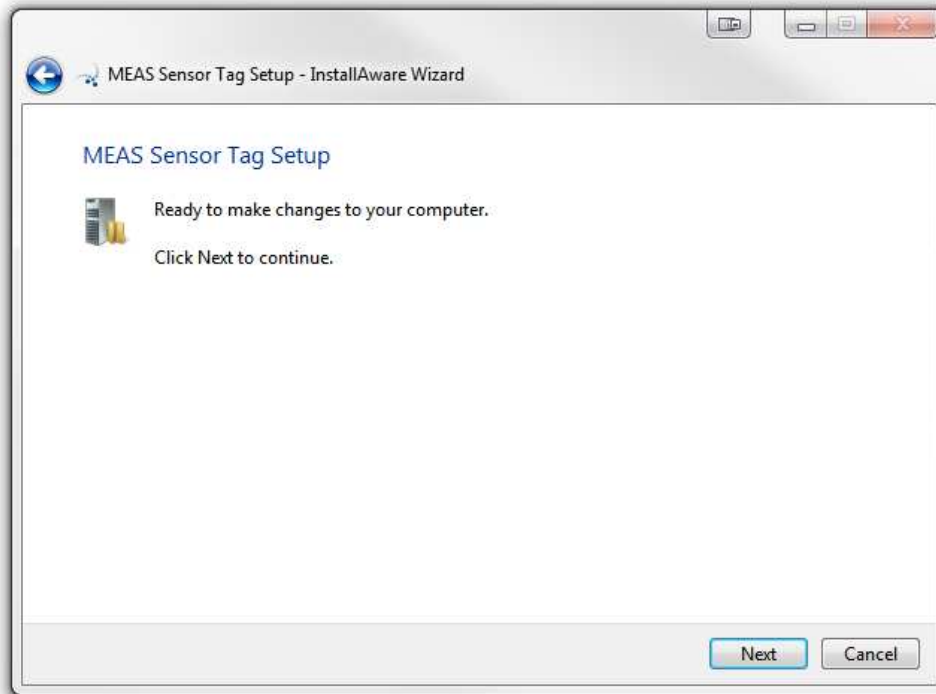
Windows is a trademark.

MEAS SENSOR TAG APP— INSTALLATION GUIDE FOR WINDOWS®

Specify a custom destination path or just click next



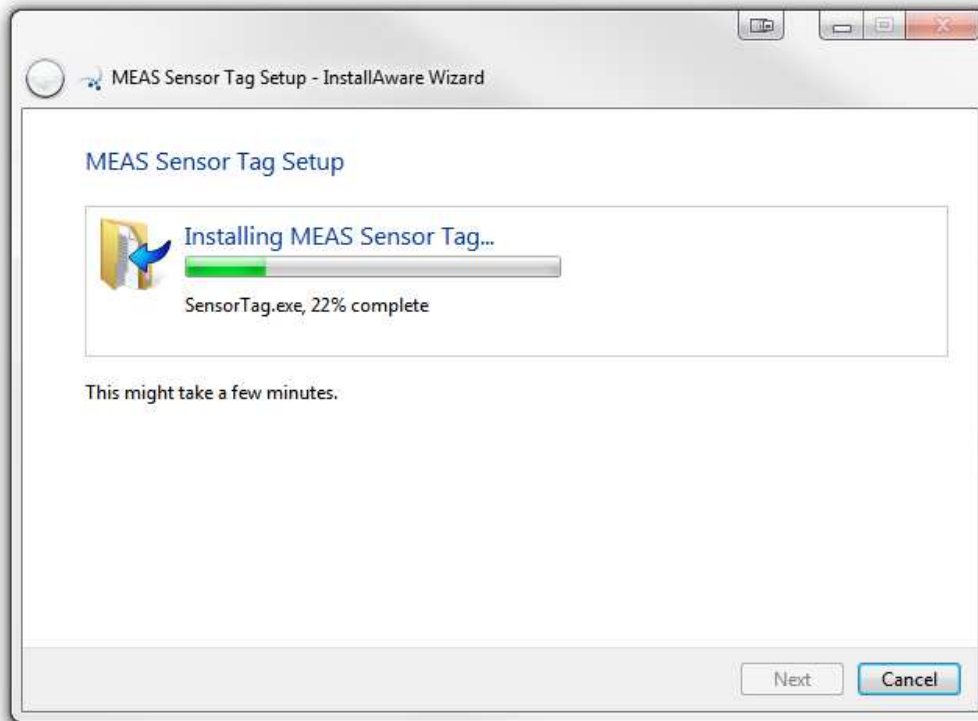
Get ready to go through the installation process



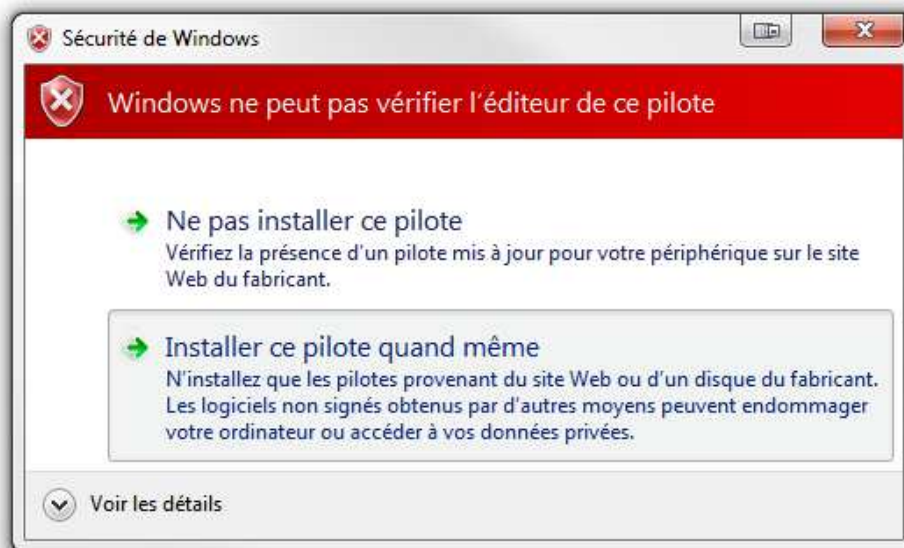
Windows is a trademark.

MEAS SENSOR TAG APP— INSTALLATION GUIDE FOR WINDOWS®

Wait for the files to be copied, this step may take a few minutes



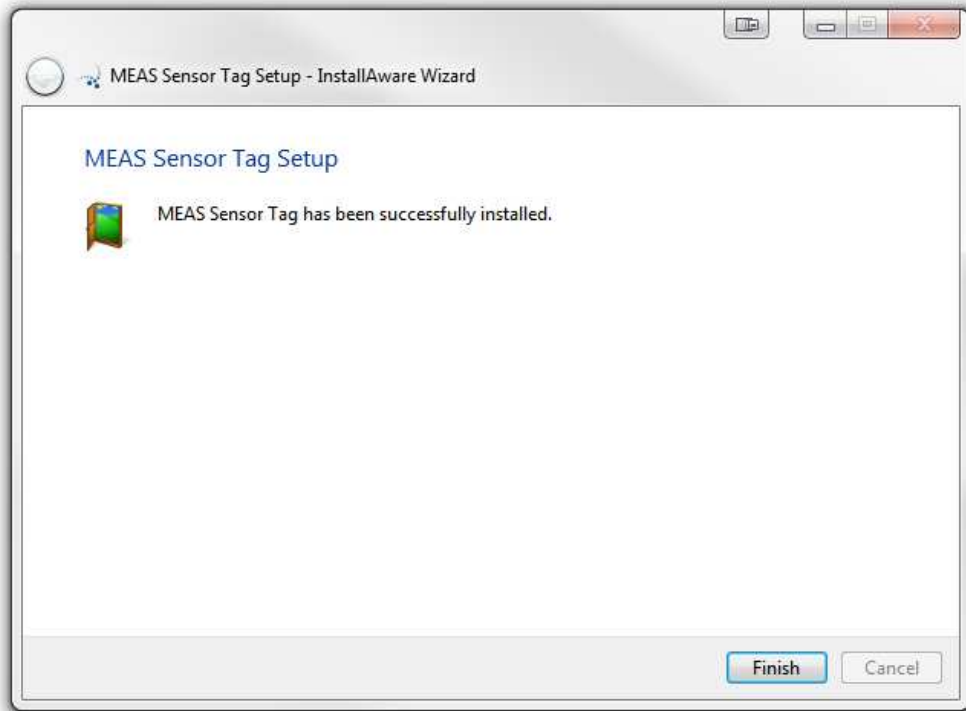
During the installation process you might be asked for permission to install unsigned driver software. You **must** choose “*Install this driver software anyway*”.



Windows is a trademark.

MEAS SENSOR TAG APP— INSTALLATION GUIDE FOR WINDOWS®

The installation wizard is now complete



You can now plug in the MEAS Bluetooth Low Energy USB Dongle.
Wait for Windows® to complete its installation.

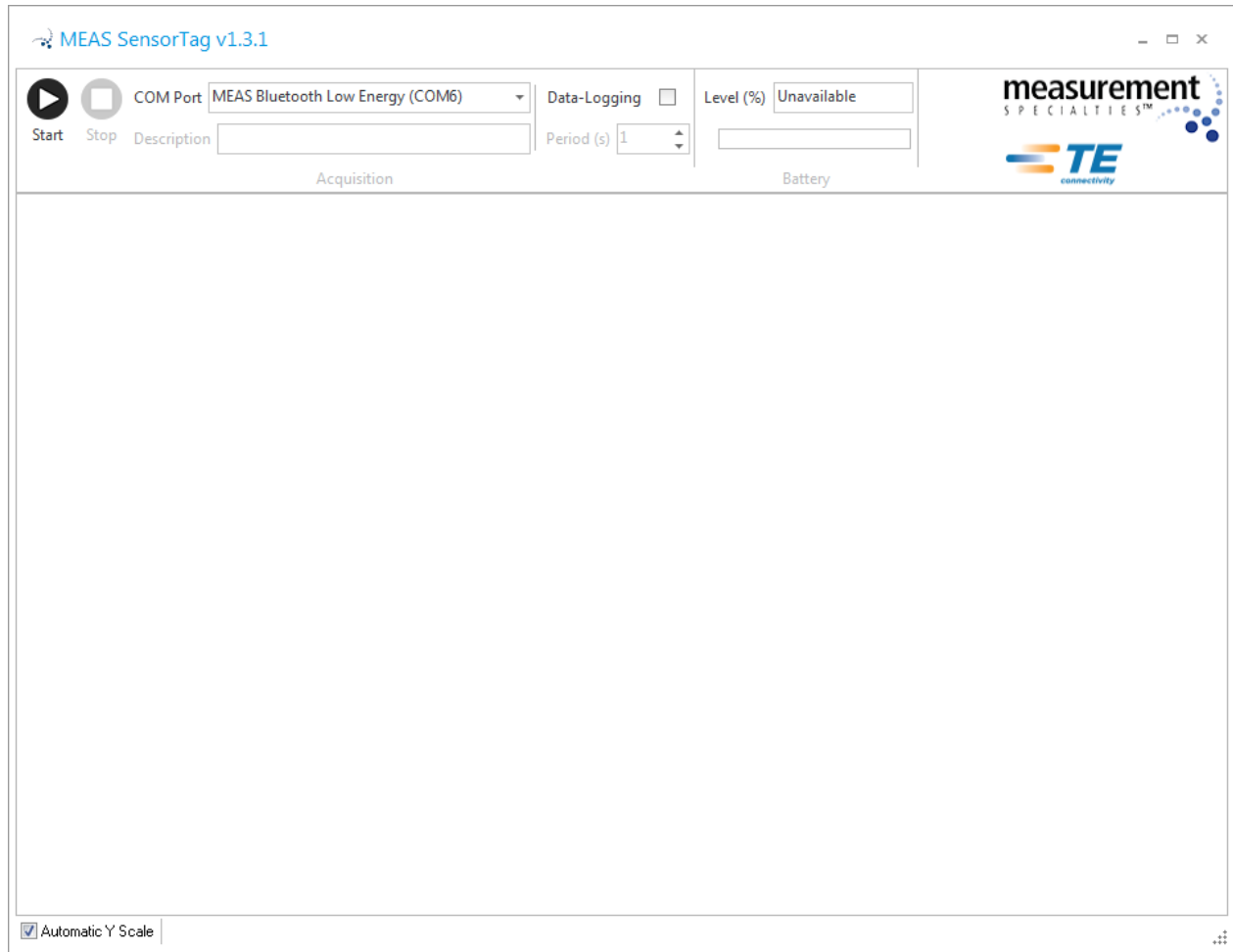


You can now launch the MEAS sensor tag software from the shortcut located on your desktop or from your start menu.



Windows is a trademark.

2 MEAS SENSOR TAG SOFTWARE

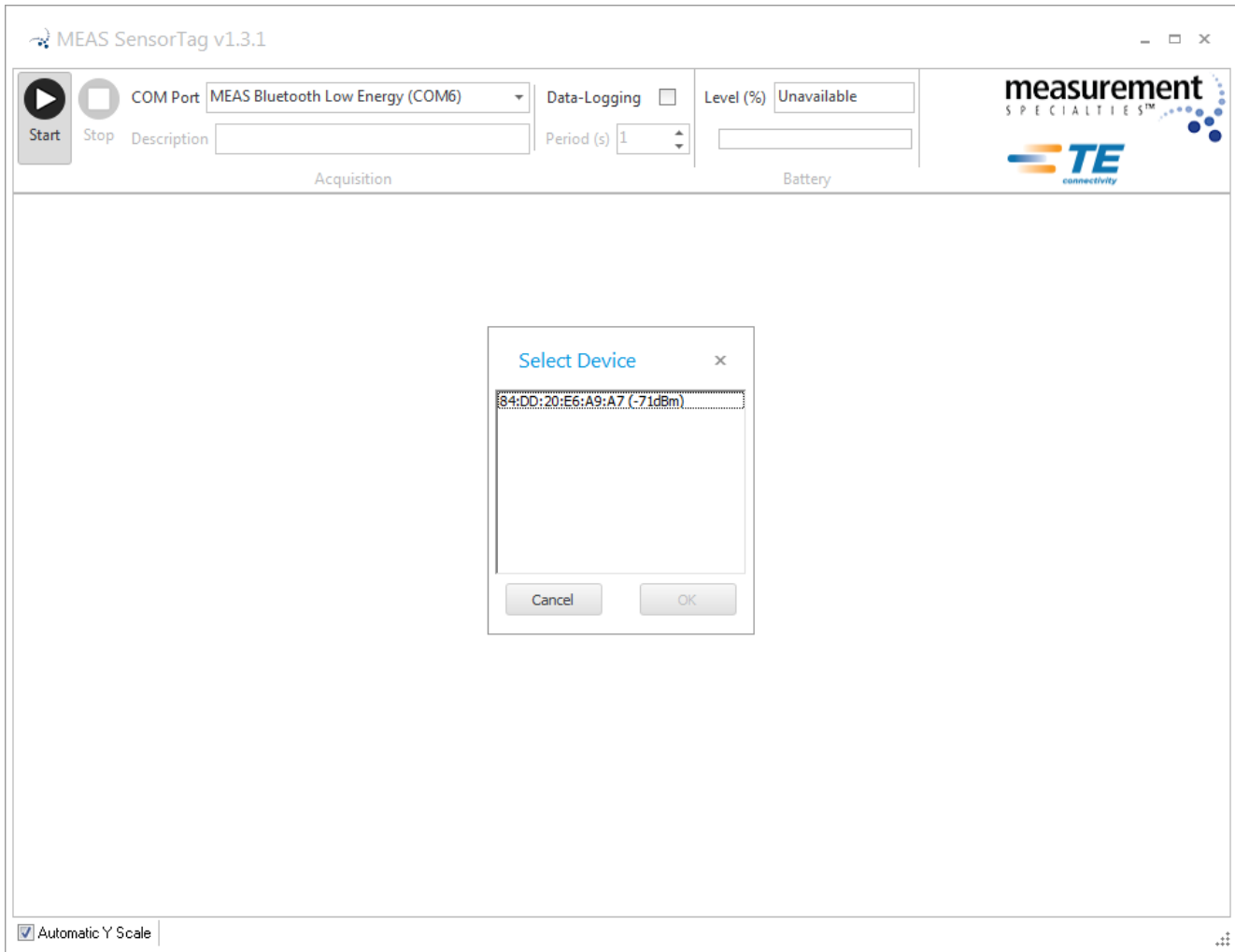


2.1 COM Port configuration

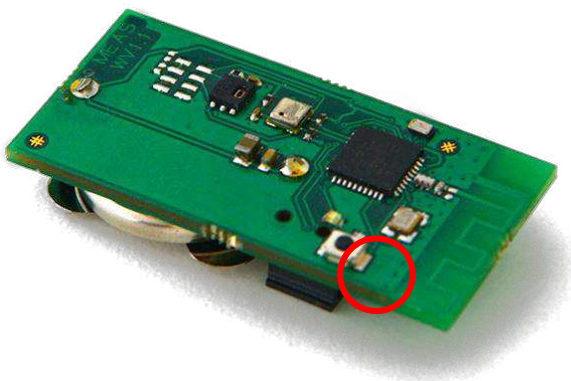
Your MEAS Bluetooth Low Energy Dongle should appear in the COM Port selection list. If you have more than one device, make sure to select the one you are willing to use.

2.2 Data acquisition

In order to connect to your device you just have to press the 'Start' button, the device discovery assistant will appear:



Press the push button located on the sensor tag board, the LED will blink in order to let you know that it is ready to accept a connection.

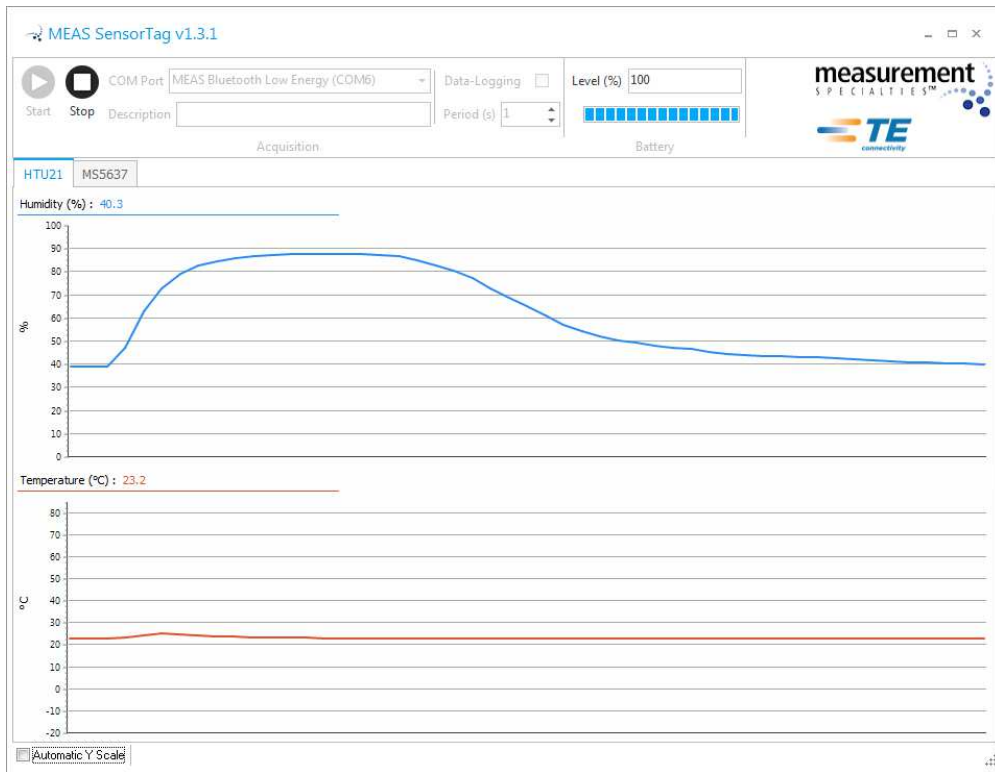


You can now select your device in the window and click 'OK'.

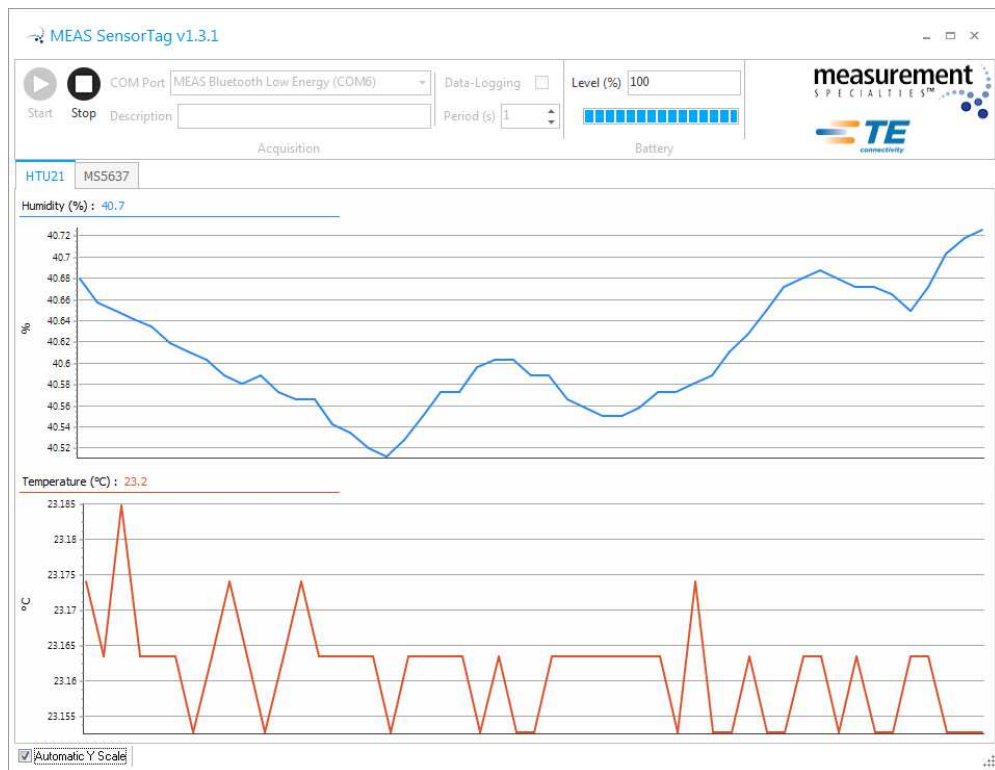
Windows is a trademark.

MEAS SENSOR TAG APP— INSTALLATION GUIDE FOR WINDOWS®

The MEAS sensor tag board will transmit one sample per second for each sensor:



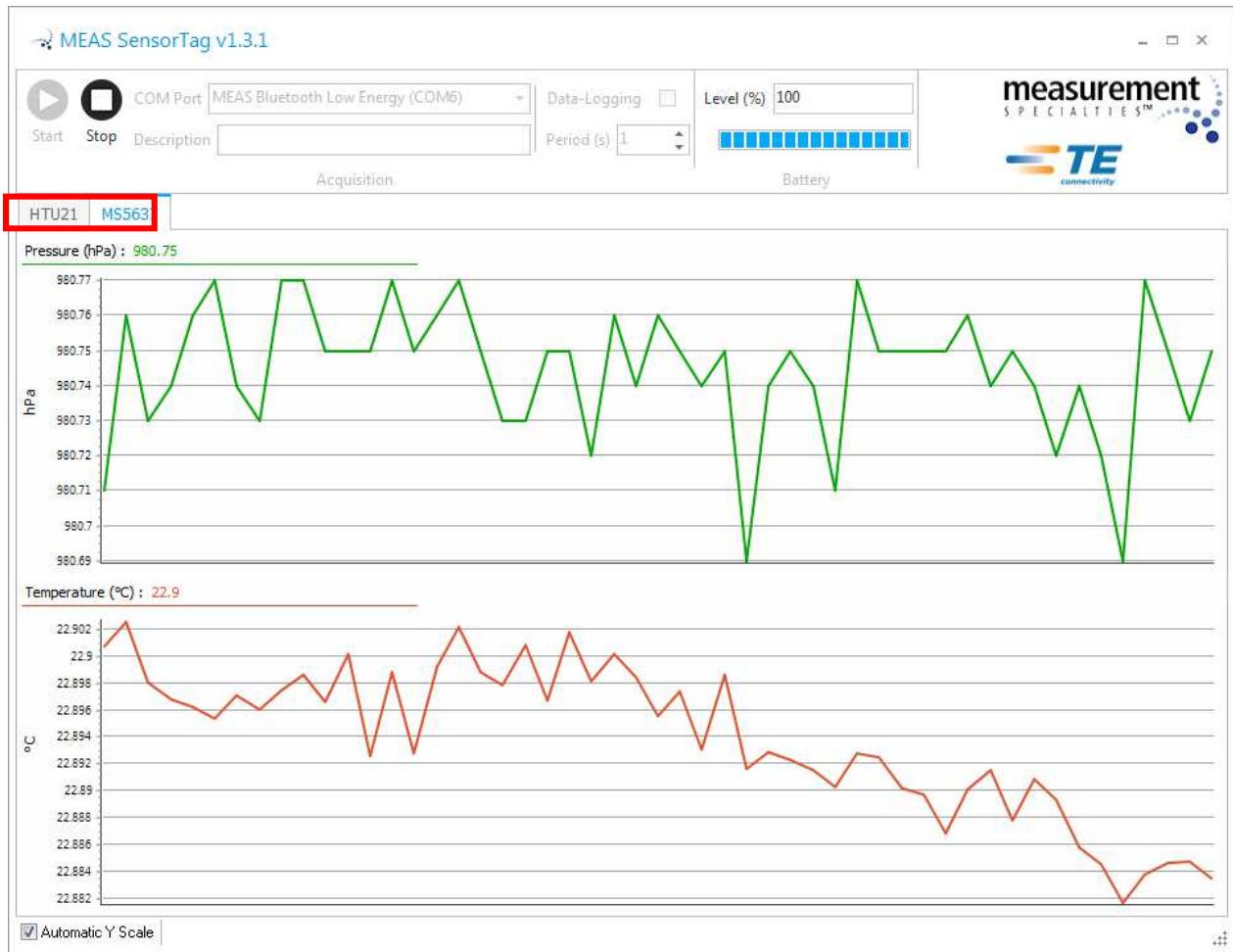
At the bottom of the screen you can select an 'Automatic Y Scale' in order to have an automatic zooming on your data:



Windows is a trademark.

MEAS SENSOR TAG APP— INSTALLATION GUIDE FOR WINDOWS®

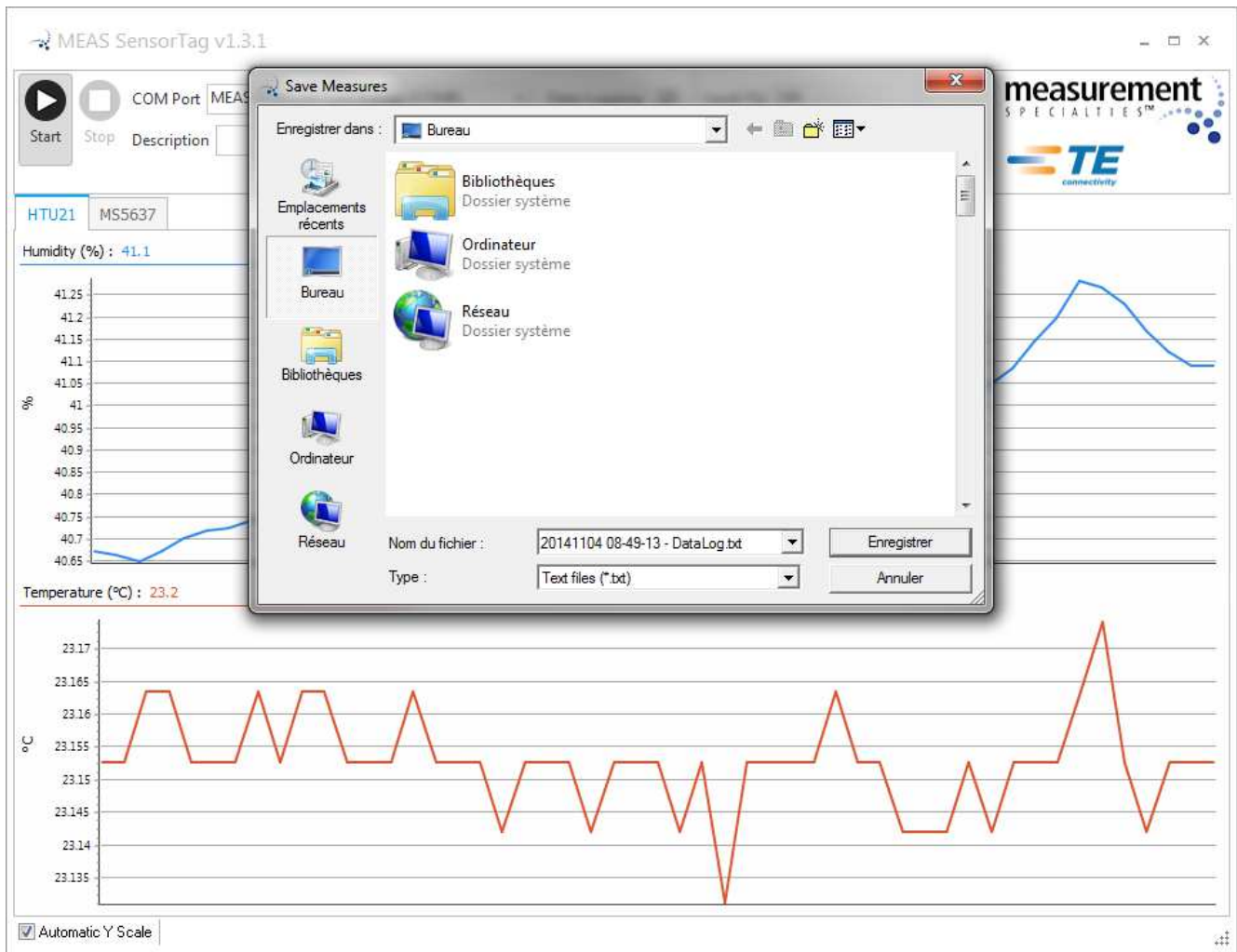
Each sensor is located in his own tab, you can click on the sensor of your choice in order to display its data:



Windows is a trademark.

2.3 Data logging

In order to save your data, you can click the 'Data logging' checkbox. When you press 'Start', you will be asked where to save your data file:



You can select the folder you want and also choose your file name.

MEAS SENSOR TAG APP— INSTALLATION GUIDE FOR WINDOWS®

CONTACT

Measurement Specialties, Inc.,
a TE Connectivity company
Impasse Jeanne Benozzi - CS 83163
31027 Toulouse Cedex 3 France
+33 (0)5 820 822 00
customercare.tlse@te.com

te.com/sensorsolutions

Measurement Specialties, MEAS, TE Connectivity, TE Connectivity (logo) and EVERY CONNECTION COUNTS are trademarks. All other logos, products and/or company names referred to herein might be trademarks of their respective owners. Windows and Bluetooth are trademarks of their respective owners.

The information given herein, including drawings, illustrations and schematics which are intended for illustration purposes only, is believed to be reliable. However, TE Connectivity makes no warranties as to its accuracy or completeness and disclaims any liability in connection with its use. TE Connectivity's obligations shall only be as set forth in TE Connectivity's Standard Terms and Conditions of Sale for this product and in no case will TE Connectivity be liable for any incidental, indirect or consequential damages arising out of the sale, resale, use or misuse of the product. Users of TE Connectivity products should make their own evaluation to determine the suitability of each such product for the specific application.

© 2016 TE Connectivity Ltd. family of companies All Rights Reserved.

Document No: WPC002 | Issue Index: C | Volume: 01