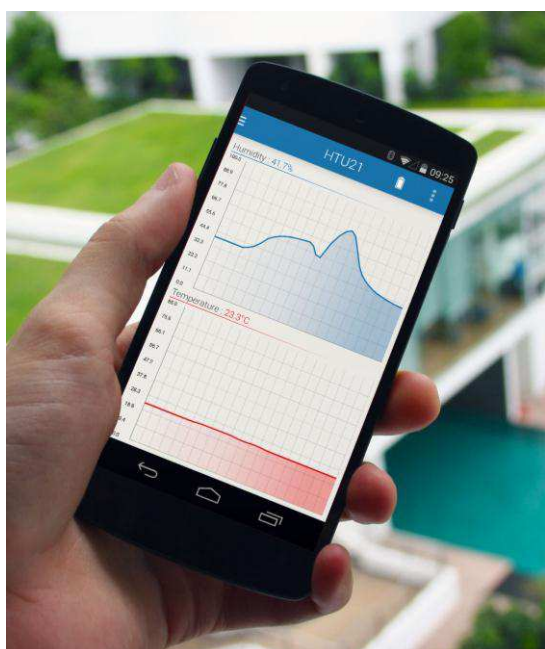


MEAS SENSOR TAG APP— INSTALLATION GUIDE FOR ANDROID™



This document describes the installation of the Measurement Specialties sensor tag application for Android™ devices.

Contents

1	Installation	2
1.1	Prerequisite	22
1.2	Download Application.....	2
2	MEAS Sensor Tag Software	3
2.1	Sensors measurement.....	3
2.2	Data logging	6
3	Settings	7
4	Applications.....	8
4.1	Comfort.....	8
4.2	Altimeter	9

ANDROID is a trademark.

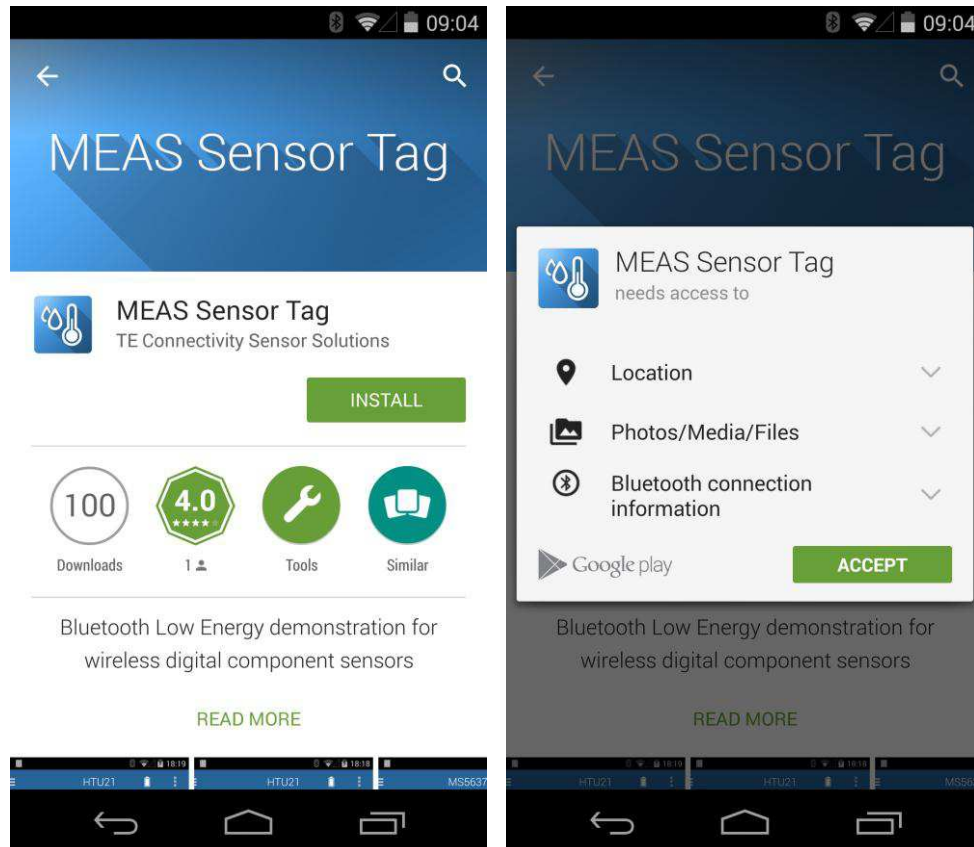
1 INSTALLATION

1.1 Prerequisite

- ✦ MEAS sensor tag
- ✦ Android™ 4.3+ device

1.2 Download Application

Open the Google Play™ Store and look for “Measurement Specialties” or “MEAS sensor tag”:

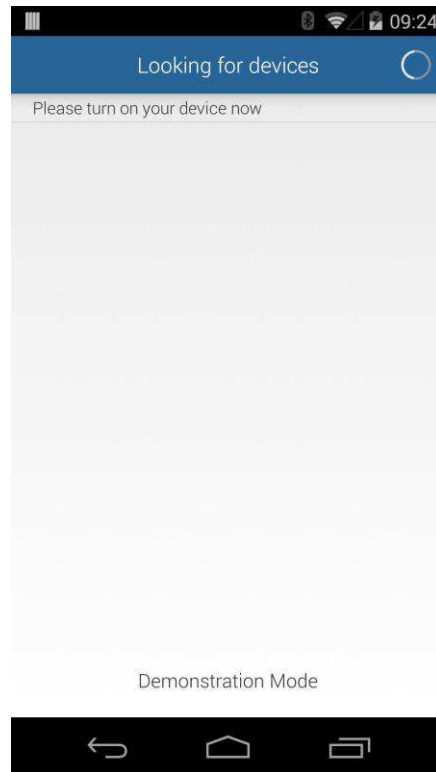


The application requires access to Bluetooth wireless technology and also storage and network communication for data logging purpose. Click on “ACCEPT” in order to authorize the application permissions and go through the installation process.

2 MEAS SENSOR TAG SOFTWARE

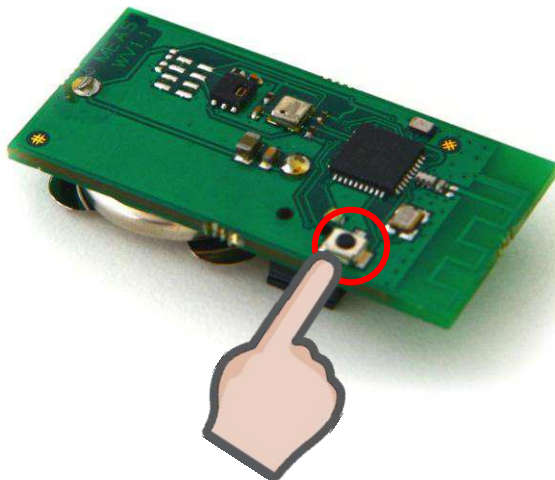


Look for the MEAS sensor tag icon on your smartphone and launch the application



2.1 Sensors measurement

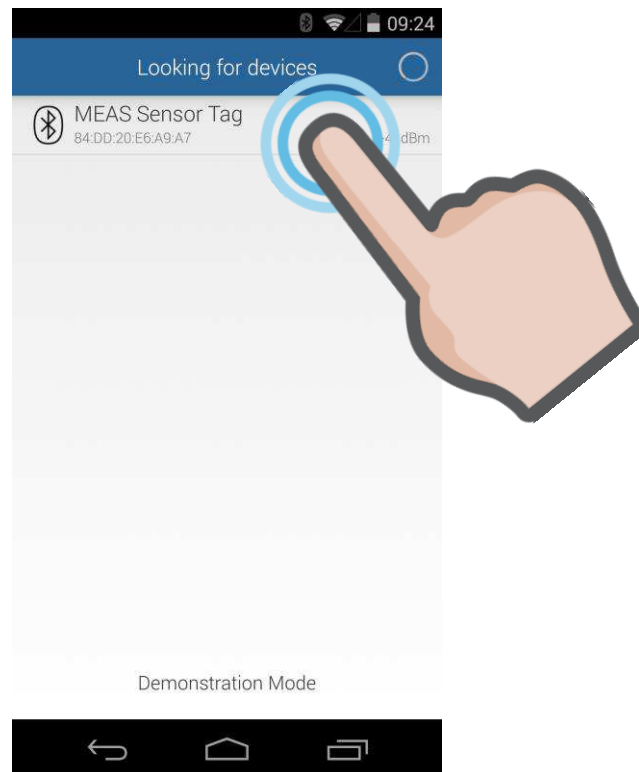
Press the push button located on the sensor tag board, the LED will blink in order to let you know that it is ready to accept a connection.



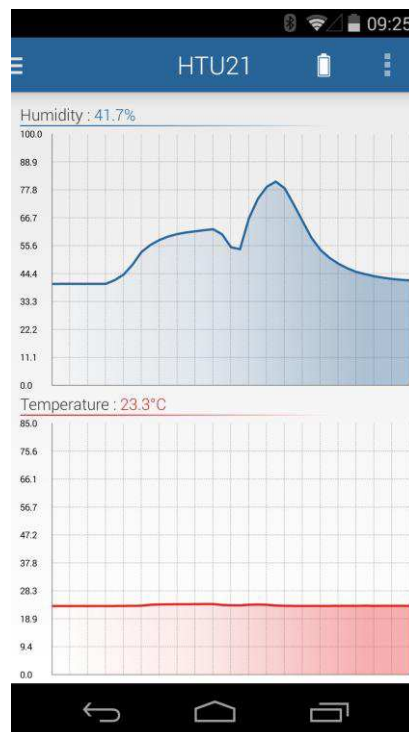
ANDROID is a trademark.

MEAS SENSOR TAG APP— INSTALLATION GUIDE FOR ANDROID™

You can now select your device in the application discovery list.

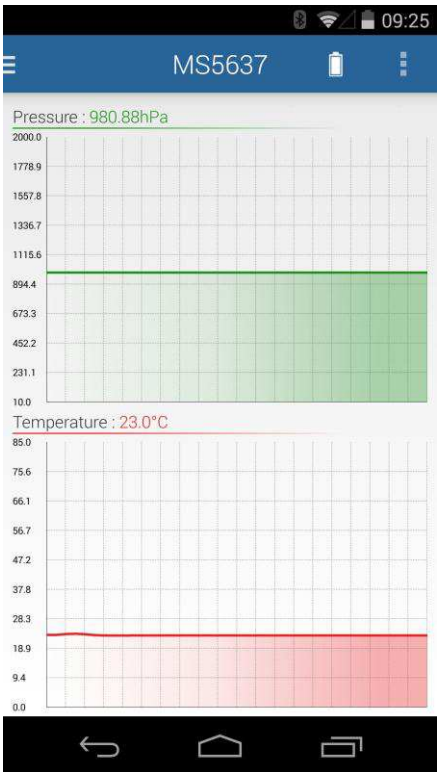
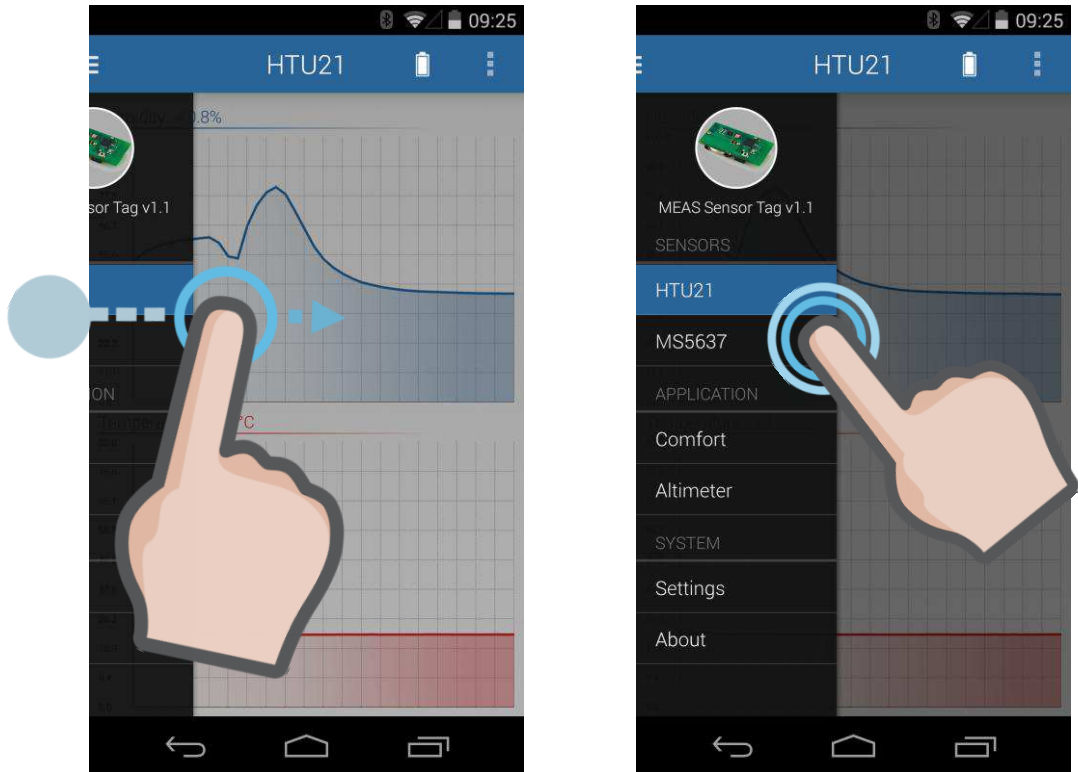


The MEAS sensor tag board will transmit one sample per second for each sensor and show sensor data on a scrolling graph.



ANDROID is a trademark.

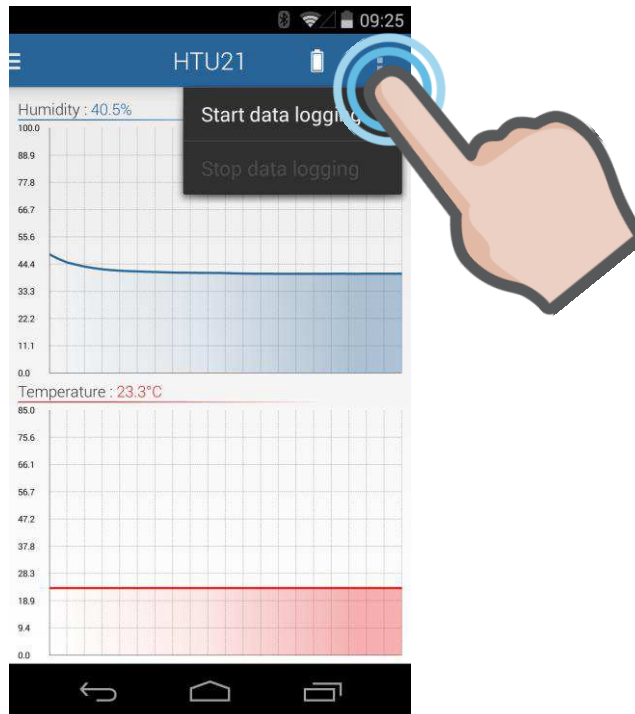
Use the navigation drawer in order to select other sensors when available.



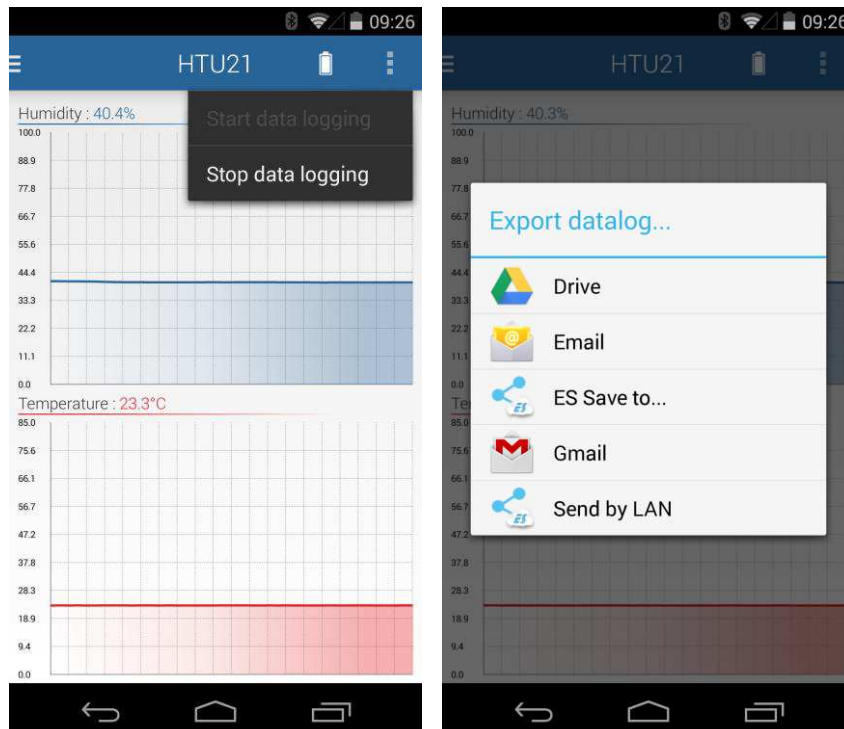
ANDROID is a trademark.

2.2 Data logging

In order to record your data, you can at any moment, press the menu button then start the data logging.

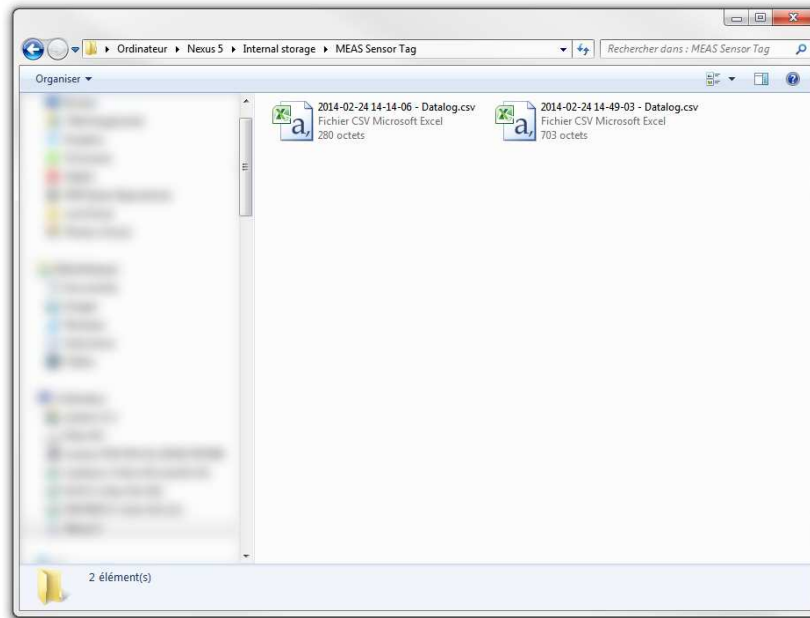


When you stop data logging, you will have to select how to export it.

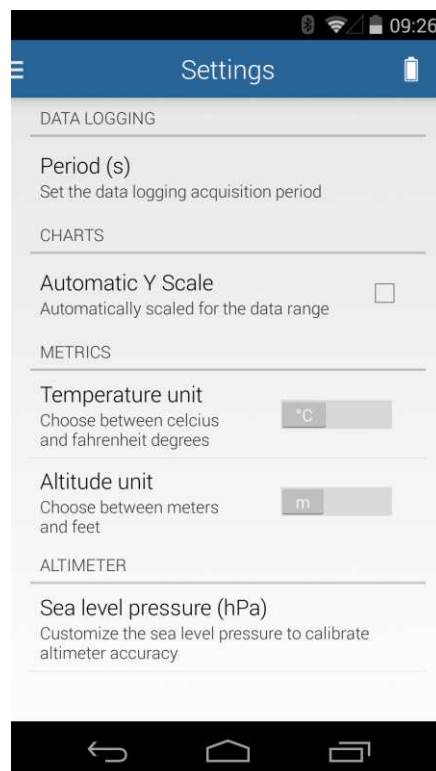


ANDROID is a trademark.

If you do not want to export your data, you can also plug your device to your computer and retrieve the files directly. A folder called “MEAS sensor tag” is available in your internal storage and contains all your data logs:



3 SETTINGS



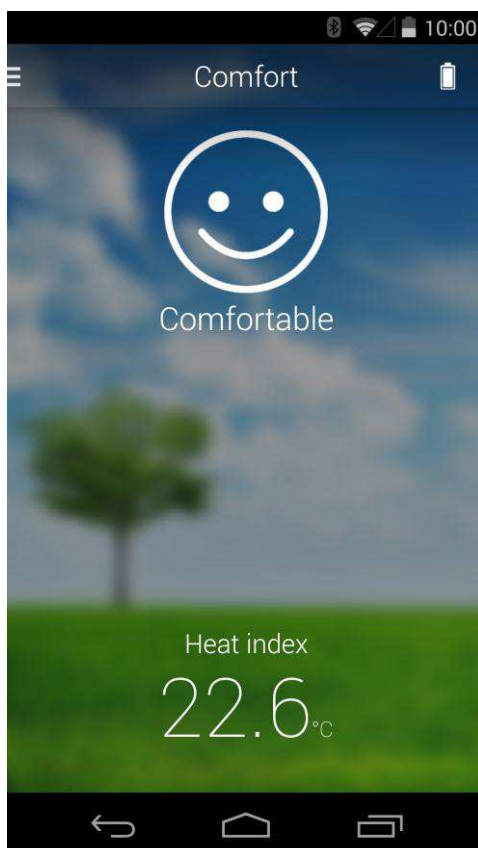
The settings tab of the navigation drawer will allow you to set the data logging acquisition period, the charts automatic zooming or the temperature unit of measurement.

ANDROID is a trademark.

4 APPLICATIONS

4.1 Comfort

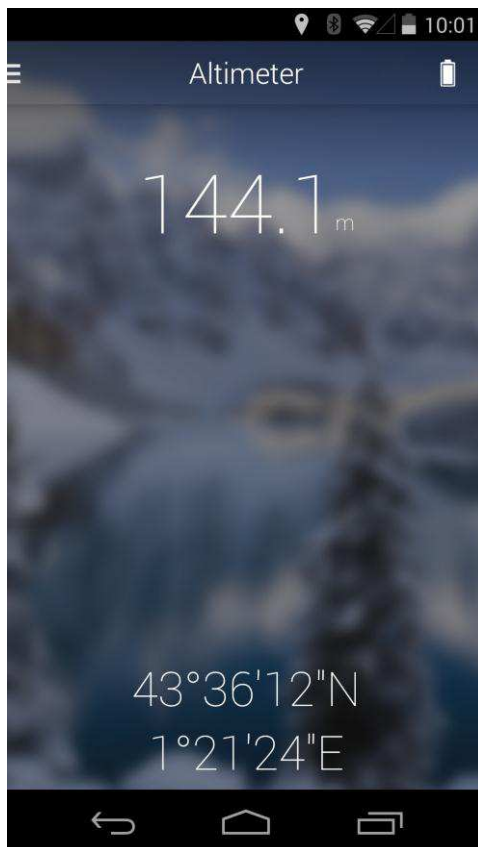
This comfort tab demonstrates how the humidity and temperature can be used in order to compute the heat index.



ANDROID is a trademark.

4.2 Altimeter

This comfort tab demonstrates how the barometric pressure can be used to compute the altitude. In order to make this value accurate, the sea level pressure from your location has to be specified in the settings tab.



CONTACT

Measurement Specialties, Inc.,
a TE Connectivity company
Impasse Jeanne Benozzi - CS 83163
31027 Toulouse Cedex 3 France
+33 (0)5 820 822 00
customercare.tlse@te.com

te.com/sensorsolutions

Android is a trademark of Google Inc.
Google Play is a trademark of Google Inc.
Bluetooth is a trademark of Bluetooth SIG, Inc.

Measurement Specialties, MEAS, TE Connectivity, TE Connectivity (logo) are trademarks. All other logos, products and/or company names referred to herein might be trademarks of their respective owners.

The information given herein, including drawings, illustrations and schematics which are intended for illustration purposes only, is believed to be reliable. However, TE Connectivity makes no warranties as to its accuracy or completeness and disclaims any liability in connection with its use. TE Connectivity's obligations shall only be as set forth in TE Connectivity's Standard Terms and Conditions of Sale for this product and in no case will TE Connectivity be liable for any incidental, indirect or consequential damages arising out of the sale, resale, use or misuse of the product. Users of TE Connectivity products should make their own evaluation to determine the suitability of each such product for the specific application.

© 2016 TE Connectivity Ltd. family of companies All Rights Reserved.

Document No: WPC001 | Issue Index: B | Volume: 01