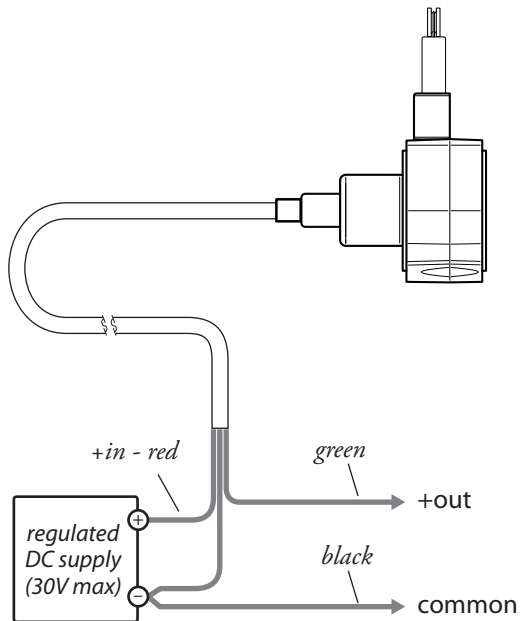


# SP2 Installation Guide

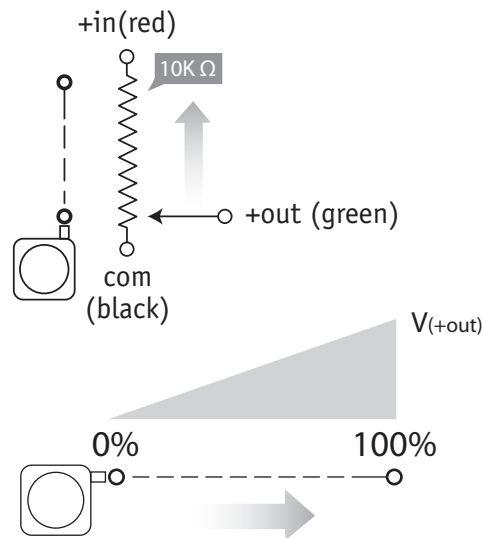
includes: SP2-4, SP2-12, SP2-25, SP2-50



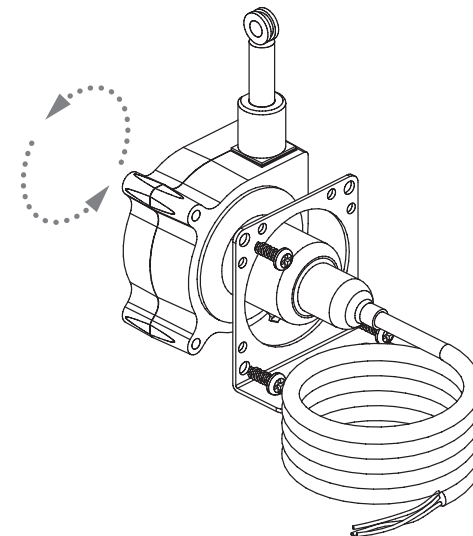
## Electrical Connection



## Output Signal / Circuit



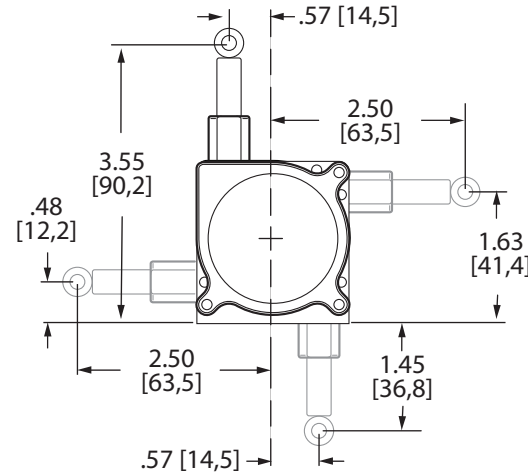
## Measuring Cable Exit Direction



To change cable exit direction, simply remove the 3 mounting bracket screws and rotate sensor body to 1 of 4 options.

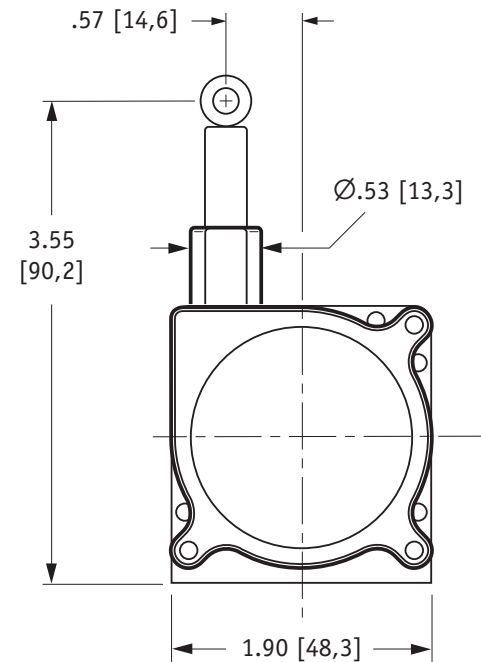
## alternate installation

alternate measuring cable exits



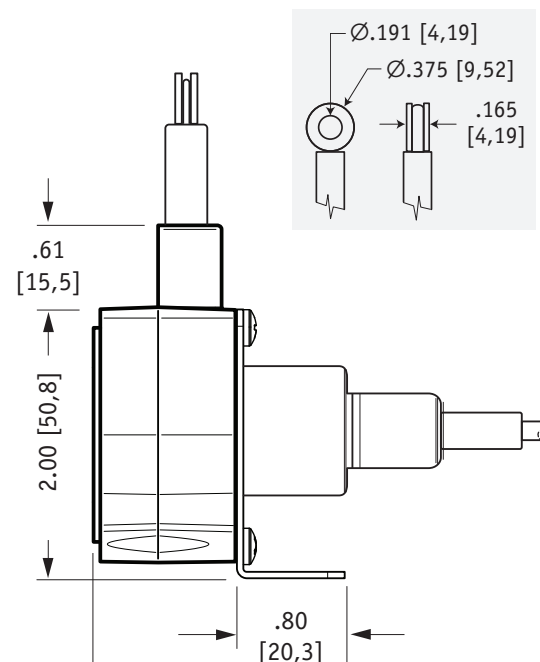
in [mm]

# Front View



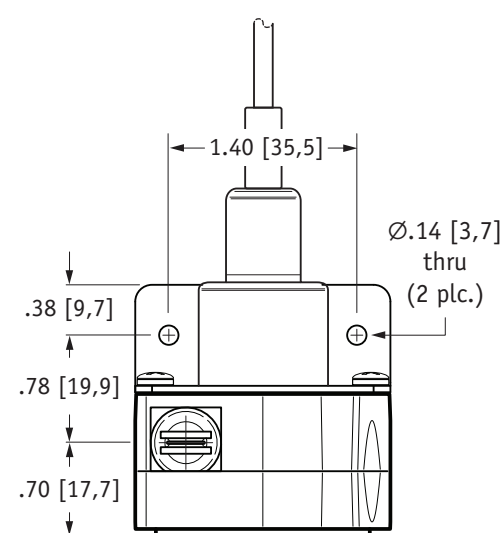
in [mm]

# Side View



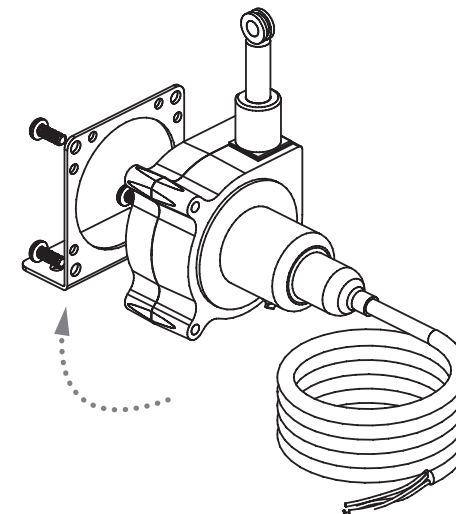
in [mm]

# Top View



in [mm]

# Alternate Bracket Installation



For added flexibility, the mounting bracket can easily be switched to opposite side.

# Specifications

Stroke Range Options: 4.75, 12.5, 25 and 50 inches  
 Accuracy  
 4.75-inch range: 1% fs.  
 all others: .25% fs.  
 Repeatability: ±.05% fs.

Enclosure: polycarbonate  
 Measuring Cable: .019-in. dia. nylon-coated stainless  
 Measuring Cable Tension: 7 oz. (1,9 N) ±25%  
 Max Cable Acceleration: 15 g

Input Resistance: 10K ohms, ±10%  
 Sensor: plastic hybrid potentiometer  
 Recommended maximum input voltage 30V (AC/DC)  
 Power Rating: 2 W at 70°F (21°C)  
 Enclosure: IP50  
 Operating Temp: 0°-160°F (-18° to 71°C)

Complete Specs: [celesco.com/\\_datasheets/sp2.pdf](http://celesco.com/_datasheets/sp2.pdf)