

SD-Card Datalogger - 1 DIN module

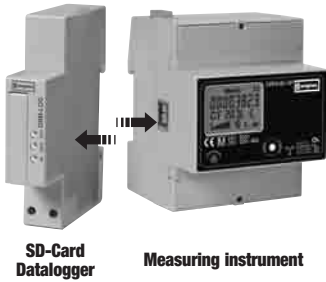


Code	Description
DRM-LOG	SD-Card Datalogger supplied with SD-Card 2 GB 12-24 V
DRM-LOG-PS	Power supply 230-240 V AC input / 18 V AC output to supply up to 6 SD-Card Datalogger

WARNING
Installation must be carried out and inspected by a specialist or under his supervision.

SD-Card Datalogger - Shorthand Guide

1) System architecture



2) Supply

- Power supply: 12-24 V AC/DC

3) Quick Start

- Insert the SD-Card memory in the SD-Card interface.
- Install the interface on the DIN rail, beside the meter. The infrared port of the SD-Card interface must line up with the infrared port of the meter. Make sure that the slide clicks, for a stable installation.
- Connect the supply to the terminals on the lower side of the interface

4) Configuration

- SD Card dimension: 1-2-4-8 GByte
- Recording rate: 30 seconds, 1-2-5-10-30 minutes, 1-2-4-8-24 hours
- Connectable meters: single-phase and three-phase Energy-meter, Network analyzer, Power-meters

5) Front Panel

- Three green LEDs notify the communication state, the recording state and the SD-Card:

- LED blinking
- LED ON
- LED OFF
- LED irrelevant

The recording will start within 8 seconds; don't remove the SD-Card.

The SD-Card is full.

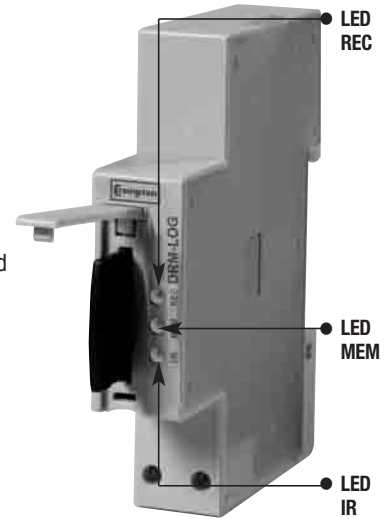
The recording is started; don't remove the SD-Card.

the SD-Card may be removed

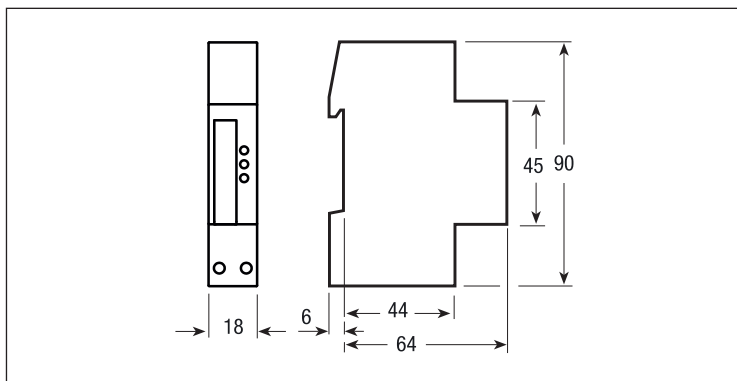
Less than 25% of memory is available.

The IR communication with meter is active.

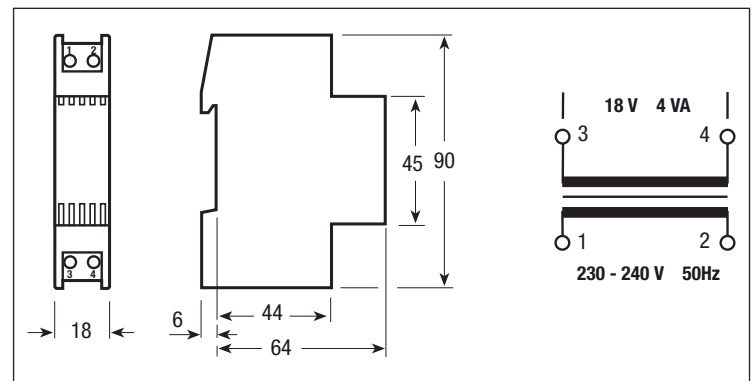
IR communication not active



Dimension DRM-LOG



Dimension - Wiring diagram DRM-LOG-PS



Technical data

Data in compliance with IEC 60950-1, EN 61000-6-2, EN 61000-6-3 and EN 61000-4-2			DRM-LOG
General characteristics			
• Housing	DIN 43880	DIN	1 module
• Mounting	EN 60715	35 mm	DIN rail
• Depth		mm	70
Power supply			
• Voltage rating		VAC/DC	12 ... 24
• Frequency range		Hz	45 ... 65
Operating features			
• SD-Card memory		-	1 to 8 Gigabytes
• Suitable for both single-phase and three-phase Energy-meter, Network analyzer and Power-meters		-	yes
Interface to measuring instrument			
• HW interface	optical IR	n°	2 (Tx, Rx)
• SW protocol		-	proprietary
Safety acc. to IEC 60950-1			
• Degree pollution		-	2
• Overvoltage category		-	II
• Working voltage range		VAC	12 ... 24
• Clearance		mm	≥ 1.5
• Creepage distance	in equipment	mm	≥ 2.1
• Test voltage	impulse (1,2/50 µs) peak value	kV	2.5
	50 Hz 1 min	kV	1.35
• Housing material flame resistance	UL 94	class	V0
Connection terminals			
• Type cage	screw head Z +/-	POZIDRIV	PZ0
• Terminal capacity	solid wire min. (max)	mm ²	0.15 (2.5)
	stranded wire with sleeve min. (max)	mm ²	0.15 (4)
Environmental conditions			
• Operating temperature		°C	-10 ... +55
• Limit temperature of storage		°C	-25 ... +70
• Relative humidity		%	≤ 80
• Vibrations	sinusoidal vibration amplitude at 50 Hz	mm	± 0.25
• Protection class	acc.to IEC 60950-1	-	II
• Degree of protection	housing when mounted in front	-	IP20

All of the above information, including drawings, illustrations and graphic designs, reflects our present understanding and is to the best of our knowledge and belief correct and reliable. Users, however, should independently evaluate the suitability of each product for the desired application. Under no circumstances does this constitute an assurance of any particular quality or performance. Such an assurance is only provided in the context of our product specifications or explicit contractual arrangements. Our liability for these products is set forth in our standard terms and conditions of sale.

TE connectivity (logo), TE (logo) and TE Connectivity are trademarks of the TE Connectivity Ltd. family of companies. CROMPTON is a trademark of Crompton Parkinson Ltd. and is used by TE Connectivity Ltd. under licence. Other logos, product and company names mentioned herein may be trademarks of their respective owners.

Tyco Electronics UK Ltd.
a TE Connectivity Ltd. company
Freebournes Road, Witham, CM8 3AH

Tel: +44 (0) 1376 509509, Fax: +44 (0) 1376 509511
www.crompton-instruments.com
www.energy.te.com