

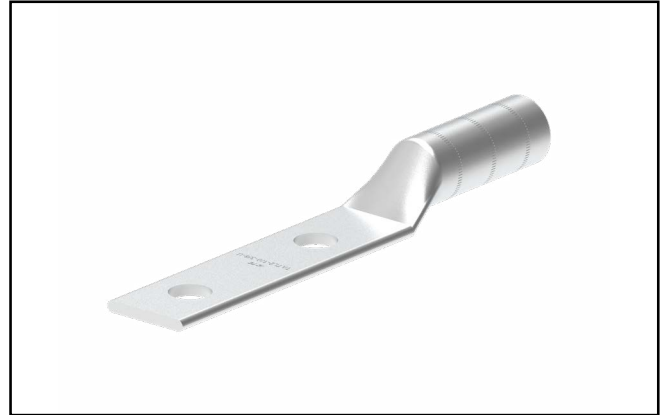


INSTRUCTIONS SHEET

EPP-3557-6/23

Dual rated Aluminum Compression Terminals

TATL, TATL2, TATL-N, TATL2-N



TE Connectors & Fittings

Please dispose of all waste according to environmental regulations.



For more information: te.com/energy

Tyco Electronics Raychem GmbH
a TE Connectivity Ltd. Company
Finsinger Feld 1
85521 Ottobrunn/Munich, Germany
Tel: +49-89-6089-0

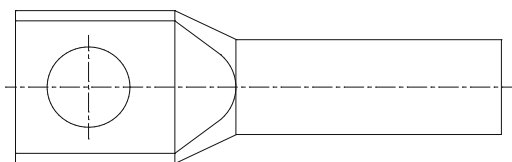
TE Connectivity
8000 Purfoy Road
Fuquay-Varina, NC 27526 USA
Tel: (+1) 800-327-6996

The Information contained in these installation instructions is for use only by installers trained to make electrical power installations and is intended to describe the correct method of installation for this product. However, TE Connectivity has no control over the field conditions which influence product installation.

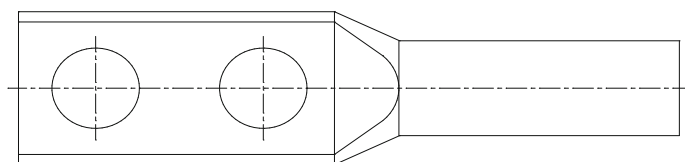
It is the user's responsibility to determine the suitability of the installation method in the user's field conditions.

TE Connectivity's only obligations are those in TE Connectivity's standard Conditions of Sale for this product and in no case will TE Connectivity be liable for any other incidental, indirect or consequential damages arising from the use or misuse of the products.

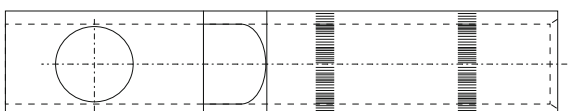
Raychem, TE, TE Connectivity and TE connectivity (logo) are trademarks. © 2024 TE Connectivity. All Rights Reserved.



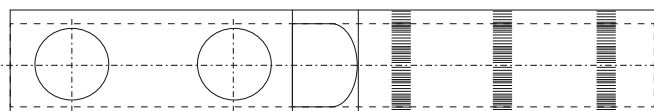
Standard Barrel Terminal (One Hole)



Standard Barrel Terminal (Two Hole)



Narrow Palm Terminal (One Hole)



Narrow Palm Terminal (Two Hole)

Table 1

Conductor Wire Size	Color Code	Strip Length	
		Long Barrel (inch)	Standard Barrel (inch)
#6 Stranded	Gray	0.83	-
#4 Stranded	Green	1.03	-
#2 Stranded	Pink	1.01	-
#1 Stranded	Pink	1.01	-
1/0 Stranded	Tan	1.30	1.65
2/0 Stranded	Tan	1.43	1.65
3/0 Stranded	Ruby	1.65	1.65
4/0 Stranded	White	1.59	2.13
250 KCM	White	1.71	2.13
300 KCM	Blue	2.41	2.48
350 KCM	Brown	2.41	2.48
500 KCM	Pink	3.23	3.3
600 KCM	Black	3.30	3.3
750 KCM	Gray	3.65	3.72
1000 KCM	Brown	4.62	-
1250 KCM	Brown	4.62	-
1500 KCM	Blue	4.62	-

Table 2

Conductor Wire Size	BRUNDY* Crimping Die				T & B* Die			
	Die Part No.	Die Index	Number of Crimps		Die Part No.	Die Index	Number of Crimps	
			Long Barrel	Standard Barrel			Long Barrel	Standard Barrel
#6 Stranded	U6 CABT	346	1	-	11401	P 29	1	-
#4 Stranded	U4 CABT	375	2	-	11333	P 37	2	-
#2 Stranded	U2 CABT	348	2	-	11334	P 42	2	-
#1 Stranded	U2 CABT	348	2	-	11405	P 45	2	-
1/0 Stranded	U25 ART	296	2	2	11406	P 50	2	2
2/0 Stranded	U25 ART	296	2	2	11407	P 54	2	2
3/0 Stranded	U27 ART	467	2	2	11408	P 60	2	2
4/0 Stranded	U28 ART	298	2	2	11409	P 66	2	2
250 KCM	U28 ART	298	2	2	11363	P 71	2	2
300 KCM	U30 ART	470	2	2	11410	P 76	2	2
350 KCM	U31 ART	299	2	2	11423	P 87	2	2
500 KCM	U34 ART	300	6	6	11424	P 99	6	6
600 KCM	U36 ART	473	6	6	-	-	6	6
750 KCM	U42 ART	303	6	6	15504	P 115	6	6
1000 KCM	L44 ART	302	7	7	-	-	-	-
1250 KCM	L44 ART	302	7	7	-	-	-	-
1500 KCM	L46 ART	478	3	3	-	-	-	-

* BURNDY and T & B are trademarks of their respective owners

1. Introduction

Purpose of this sheet is to provide installation procedures for Dual Rated Aluminum compression terminals (Base part series TATL, TATL2, TATL-N, TATL2-N). Terminals will accommodate Aluminum or Copper conductors and are compatible with the conductor wire sizes shown in **Table 1** and **Table 2**.

i NOTE:

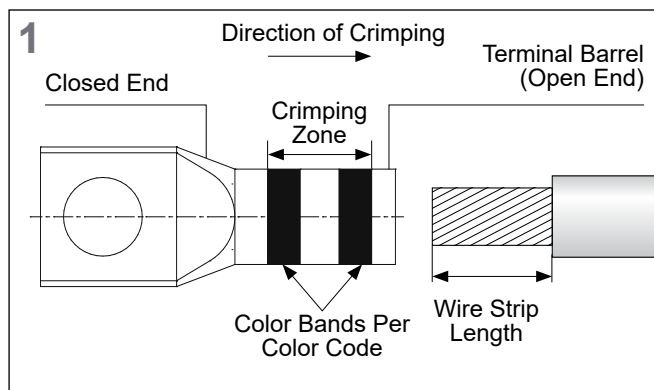
- When crimped with the approved die sets as listed in **Table 1** and **Table 2**, the connectors comply with the requirements of Underwriters Laboratories Inc. (UL) 486A-486B International C.22.2 No. 65-18 and Listed by UL in File No. E13288.
- This Product line is tooling compatible with conventional concentric and compressed stranding of commercially available copper or aluminum stranded wires.
- Dimensions in these instructions are in inches. Figures are not drawn to scale.

2. Installation Procedure

Identify the conductor size. Choose the splice according to the application and the conductor size.

2.1 Cable Preparation

1. Strip the cable to the recommended length given in the **Table 1**. Avoid nicking or cutting the conductor. Ensure that the conductor end has a straight (right-angle) cut before installing. See **Figure 1**.
2. Wire brush the conductor ends. Use a brush dedicated for copper conductor only.



2.2 Terminal Installation (See Figure 1)

1. Insert the conductor into the Terminal until it butts against the closed end of the terminal.
2. Choose a crimping die according to the conductor wire size. Die should match the description marked on the terminal.
3. Install the die into the tool head.
4. Make Sure the conductor is pushed all the way to the end of the terminal barrel before crimping.
5. Start crimping from the closed end and work towards the open end. Make sure the die closes completely before going to the next crimp. Refer to the **Table 2** for number of crimps.

i NOTE:

- All crimps are to be located within the crimping zone. See **Figure 1**.
- Do NOT overlap crimps. Rotate die 15 to 30 degrees when proceeding to the next crimp.

⚠ CAUTION

- Damaged or worn terminals must not be used. Terminals may be removed from the wire, discarded, and replaced with new ones. Always use newly cut cable with these terminals. It is not a regular procedure to reuse portions of already crimped cable.