

NUSS Release 2.9.0

This is the latest (as of July 2017) release of NUSS version 2.9.0. This release contains the following features and bug fixes.

9216 Support

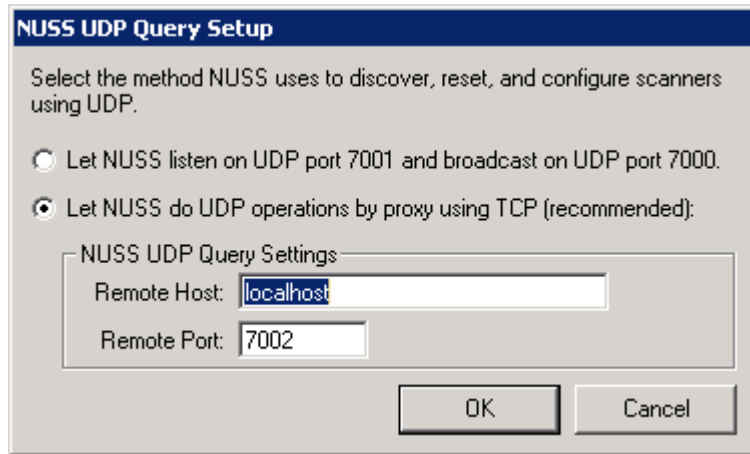
This release supports the new 9216 NetScanners with support for reporting time stamps in the run modules as well as recording and playing back run streams containing time stamps. This release also supports the use of delayed start of the run streams using the features provided by the 9216 scanners. This release also allows the operators to set and check the current system and real time clock values of the 9216 as well as allowing operators to set the NTP clock server of the 9216 module that it uses to sync its system clock.

Support for running multiple copies of NUSS

This release now supports running multiple copies of the NUSS.EXE file and allows for multiple users in a terminal server environment to each run his or her own copy of NUSS without conflict with one another. A few additional setup steps are required to enable this feature.

- ◆ The NUSS UDP Query service application must be installed. This is included with the NUSS distribution CD and is found in the Install\NUSS UDP Query folder of that CD.
- ◆ The local firewall (such as Windows Firewall) must allow the NUSS UDP Query service application to communicate to the outside LAN over ports 7000 and 7001 so it can listen and query NetScanner modules on behalf of the running copies of NUSS.EXE.
 - If you plan to install NUSS UDP Query on different computer from the NUSS.EXE client, then port 7002 (default) must also be open by the firewall to allow NUSS.EXE clients to connect via TCP to this service.
- ◆ The NUSS.EXE client(s) must be configured to use the NUSS UDP Query service to query over UDP on its(their) behalf.
 - Start the NUSS application
 - If it complains that it cannot query for NetScanners, ignore this error as the NUSS UDP Query service has binded to this port.
 - Open the Configure menu and select NUSS UDP Query.
 - Select “Let NUSS do UDP operations by proxy using TCP” option.

- If the NUSS UDP Query service is loaded on the same computer as the NUSS application, using the following settings.



- If the NUSS UDP Query is loaded on another computer, use the IP address (or domain name) of the computer running NUSS UDP Query.
- By default, NUSS UDP Query listens for TCP connections from NUSS clients on port 7002.
- ◆ Each running copy of the NUSS.EXE application must reside in its own folder.
 - The NUSS installation setup does not permit multiple installs of the NUSS application on the same computer. However, the NUSS.EXE file can be copied to a different folder manually.
 - For example, the NUSS.EXE file installed the default location (C:\WPSI\NUSS) can be copied to a new location such as C:\WPSI\NUSS2. To copy the settings, all files (especially the INI subfolder) should be copied to this new location.
 - Do this as many times as needed to accommodate all needed copies of NUSS.
 - The reason why each copy of NUSS must reside in its own folder is because NUSS writes settings and user preferences to files in its own folder. This is also the reason why NUSS cannot be installed in the Program Files folder.