

1. INTRODUCTION

The following Hand Tool was developed to extract the side spacers of 38 / 42 posn. Pin and Socket , to allow that the terminals can be removed afterwards .

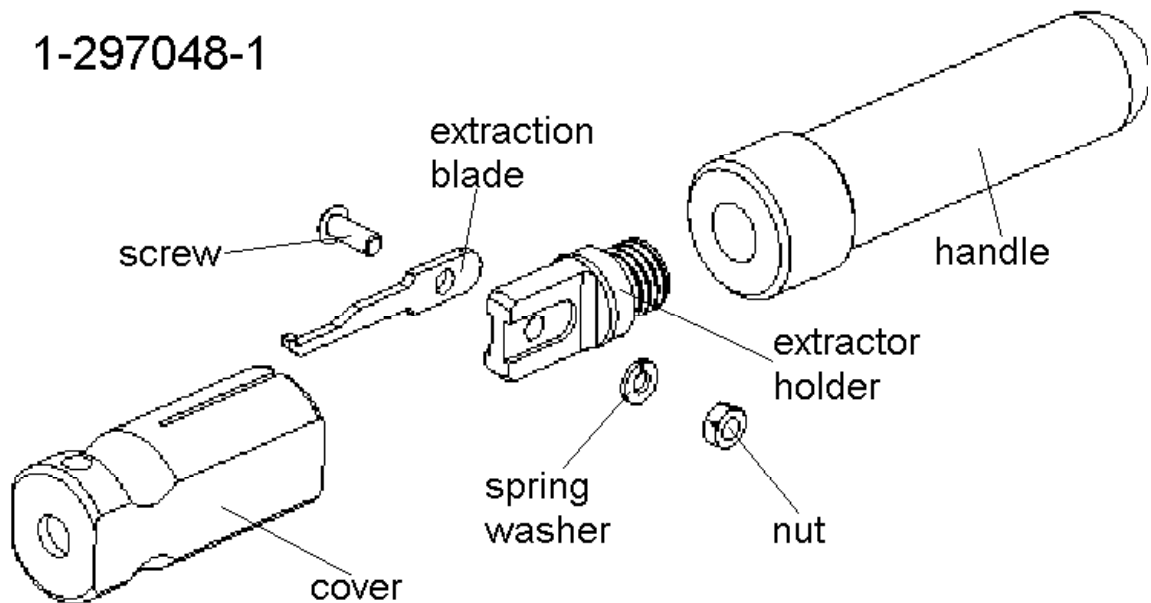
SIDE SPACER	CONNECTOR ASS'Y (***)	HAND TOOL
493501	493499 (PIN)	1-297048-1
493510	493508 (SOCKET)	
493501	493515 (PIN)	
493523	493521 (SOCKET)	

*** And their successors

2. DESCRIPTION

Seven components make up the Hand Tool : handle ; extractor holder ; screw ; extraction blade ; spring washer ; nut and cover .

1-297048-1

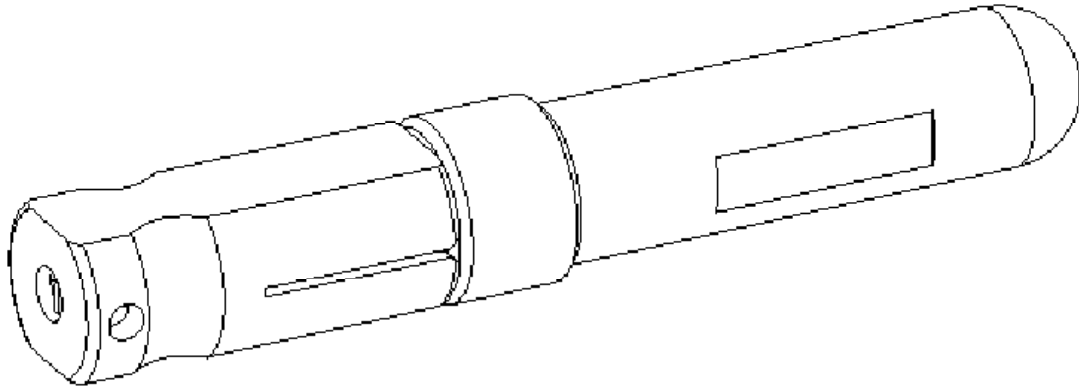


Prepared by : José Luiz Jodar Costa

Approved by : Celso Lima

3. CAUTION

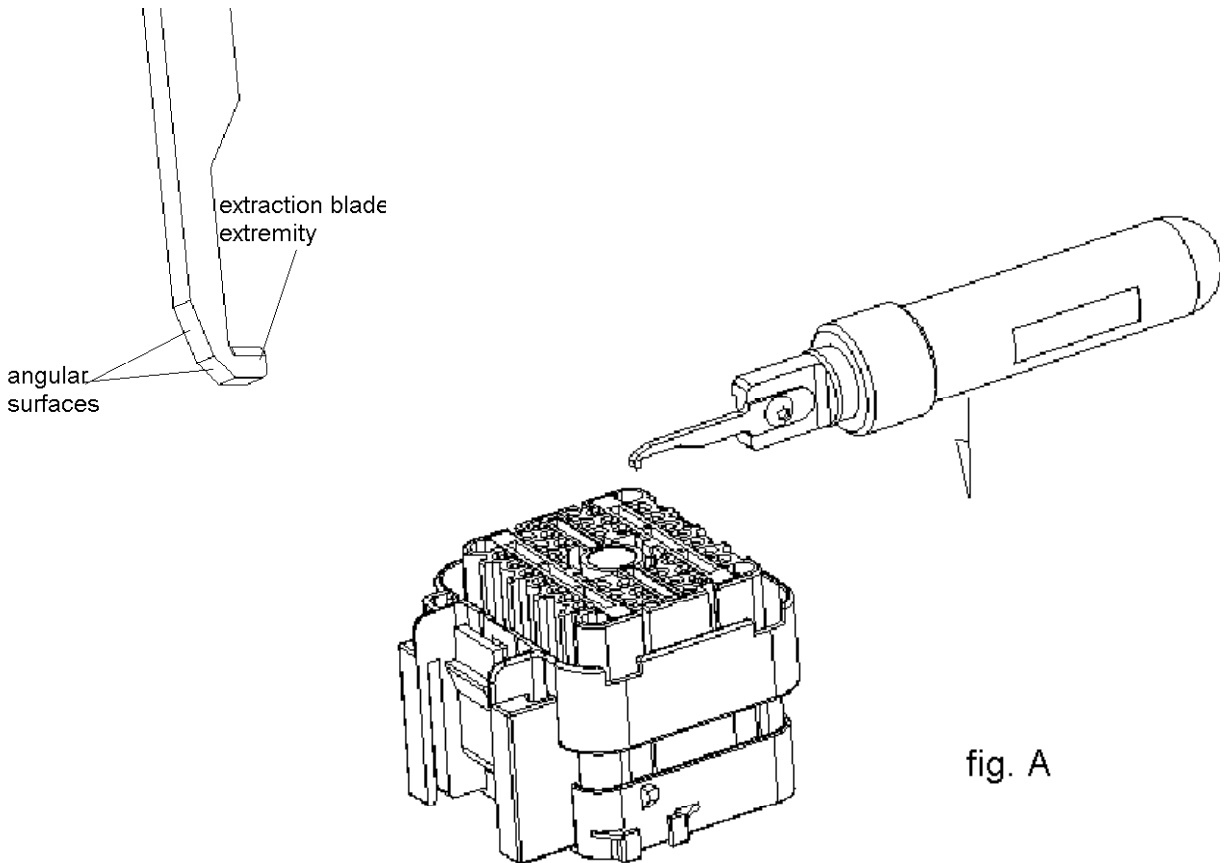
In order to protect the header against damage , the Hand Tool has a cover , which shall be connected to the extractor holder , whenever the Hand Tool is not in use .



4. PROCEDURES FOR 38 / 42 POSN. SOCKET

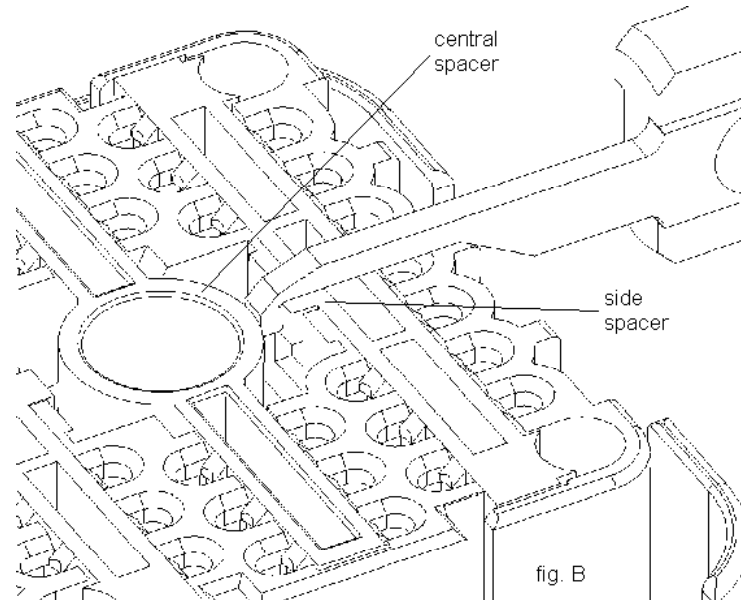
4.1 Preparation

Pick the harness up with one hand and with the other hand position the Hand Tool as shown in Figure A

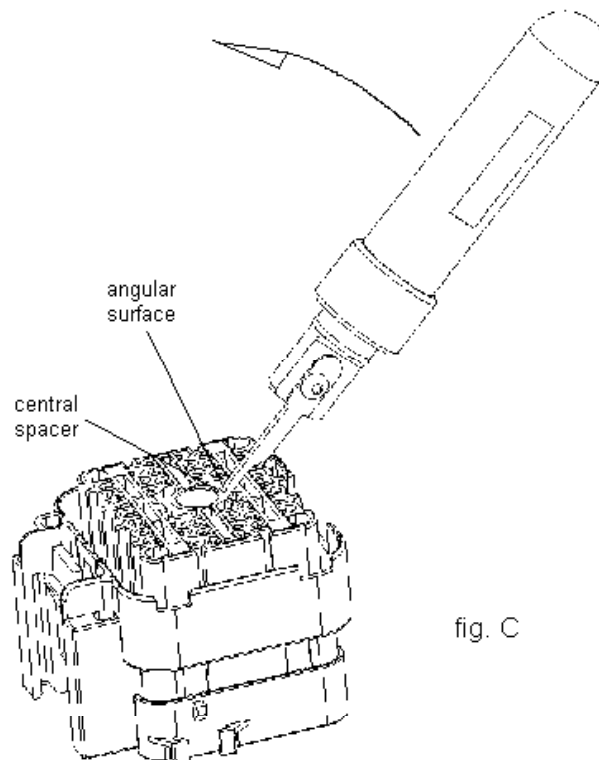


4.2 SPACER EXTRACTION

Insert the Hand Tool in order to position the extraction blade extremity between the central and the side spacer (Figure B) .



With counterclockwise movement (Figure C) , mate the angular surface on central spacer in order to get a lever (Figure D) .



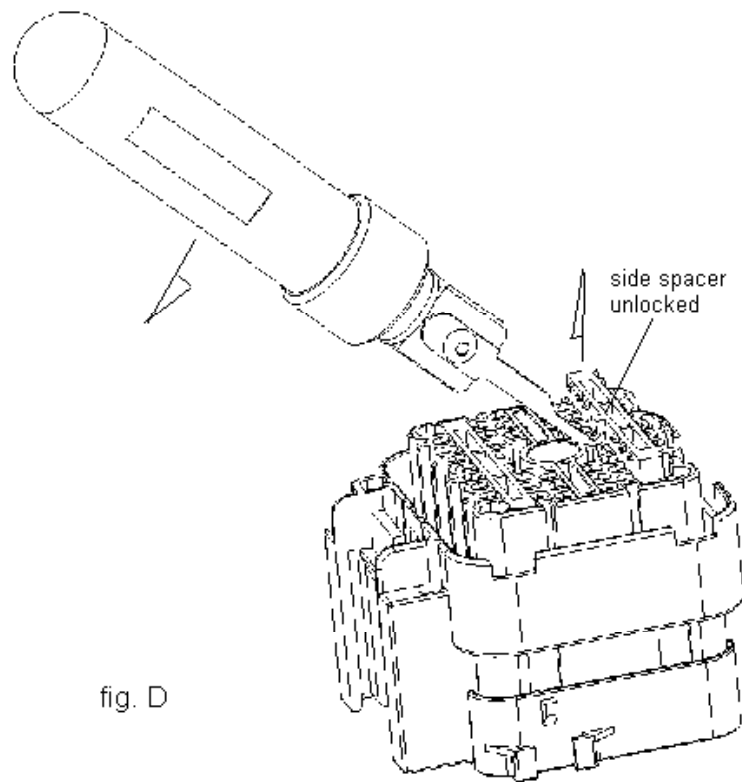
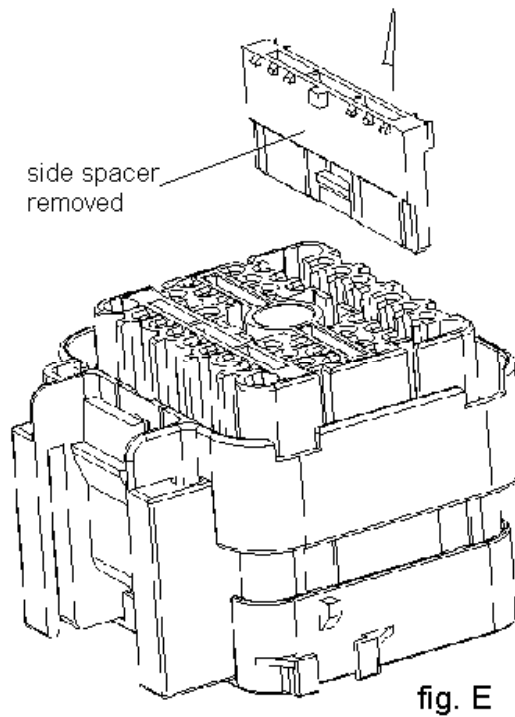


fig. D

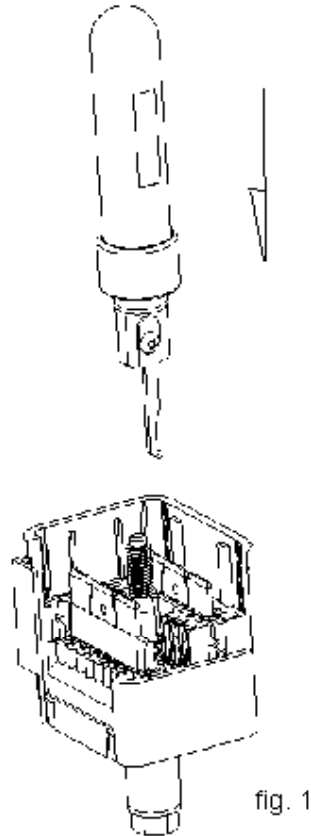
After concluding the movement , the side spacer will be already unlocked and can be removed manually (Figure E) .
The same procedure must be followed to remove the other side spacer .



5. PROCEDURES FOR 38 / 42 POSN. PIN

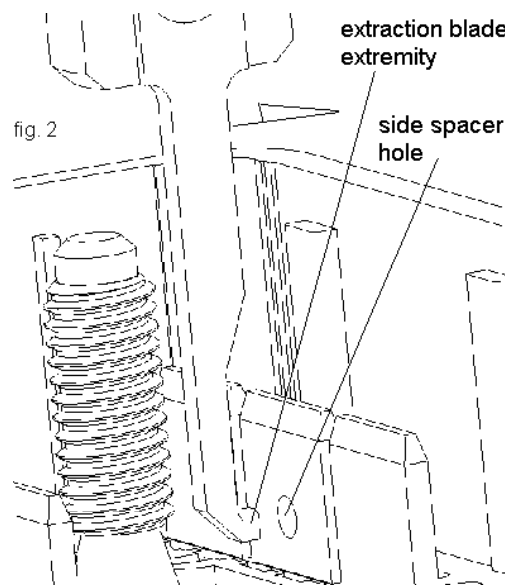
5.1 Preparation

Pick the harness up with one hand and with the other hand position the Hand Tool as shown in Figure 1 .



5.2 Spacer Extraction

Insert the blade extremity into the side spacer hole(Figure 2) .



Pull the Hand Tool up , in order to unlock the side spacer .
 After concluding the operations described above , the side spacer can be removed (Figure 3) .
 The same procedure must be followed to remove the other side spacer .

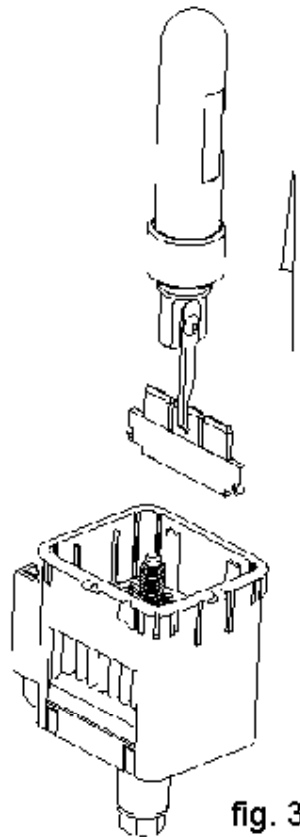


fig. 3

Remarks : For terminals extraction see Instruction Sheet 411-37031.
 For central spacer extraction see Instruction Sheet 411-37033 .

6. TOOL REPLACEMENT

For Hand Tool replacement parts refer to Tyco drawing 297048 .

Revision Record		
Revision	Date	Description
O	03-Jul-2001	Released
A	14-May-2004	Revised by EC LB00-0276-04