

customer manual

SAFETY PRECAUTIONS - IMPORTANT SAFETY INFO - READ THIS FIRST	2
SAFETY PRECAUTIONS - AVOID INJURY - READ THIS FIRST	3
1. INTRODUCTION	4
2. DESCRIPTION	4
3. INSTALLATION (GENERAL)	5
4. INSTALLATION AND REMOVAL OF TERMINATING HEAD OR FEED TRACK ASSEMBLY	6
5. OPERATION	7
6. MAINTENANCE AND INSPECTION	7
6.1.Daily Maintenance.....	7
6.2.Periodic Inspection.....	7
7. REPLACEMENT AND REPAIR	8
8. REVISION SUMMARY	9

ORIGINAL INSTRUCTIONS

SAFETY PRECAUTIONS — READ THIS FIRST!

IMPORTANT SAFETY INFORMATION

**NOTE**

Keep all decals clean and legible, and replace them when necessary.

**DANGER**

This unit should only be operated by trained personnel.

**DANGER****ELECTRIC SHOCK HAZARD**

This tool is not insulated. When using this unit near energized electrical lines, use proper personal protective equipment.



Failure to observe this warning could result in severe injury or death.

**DANGER****FIRE HAZARD**

Do not use solvents or flammable liquids to clean the tool. Solvents or flammable liquids could ignite and cause serious injury or property damage.



Failure to heed these warnings could result in severe injury from harmful fumes or burns from flying debris.

**DANGER**

Inspect the tool before each use. Replace any worn or damaged parts. A damaged or improperly assembled tool can break and strike nearby personnel.

Failure to observe this warning could result in severe injury or death.

**CAUTION**

Do not perform any service or maintenance other than as described in this manual. Injury or damage to the tool may result.

Failure to observe these precautions may result in injury or property damage.

**DANGER**

Do not use this tool in explosive atmospheres.

**DANGER**

Stored gas or fluid energy may cause a hazard.

SAFETY PRECAUTIONS — AVOID INJURY — READ THIS FIRST!

Safeguards are designed into this application equipment to protect operators and maintenance personnel from most hazards during equipment operation. However, certain safety precautions must be taken by the operator and repair personnel to avoid personal injury, as well as damage to the equipment. For best results, application equipment must be operated in a dry, dust-free environment. Do not operate equipment in a gaseous or hazardous environment.

Carefully observe the following safety precautions before and during operation of the equipment:



Always wear approved eye protection while operating equipment.



Always wear appropriate ear protection while using equipment.



Always keep guard(s) in place during normal operation



Pinch point warning: Keep hands clear of moving parts during operation. Always keep guard(s) in place during normal operation.



Always turn off the main power switch and disconnect the electrical cord from the power source when performing repair or maintenance on the equipment.



*Never insert hands into installed equipment.
Never wear loose clothing or jewelry that may catch in moving parts of the equipment.*



Never alter, modify, or misuse the equipment.

SUPPORT CENTER

CALL TOLL FREE 1-800-522-6752 (CONTINENTAL UNITED STATES AND PUERTO RICO ONLY)

The **Support Center** offers a means of providing technical assistance when required. In addition, Field Service Specialists are available to provide assistance in the adjustment or repair of the application equipment when problems arise which your maintenance personnel are unable to correct.

INFORMATION REQUIRED WHEN CONTACTING THE SUPPORT CENTER

When calling the Support Center regarding service to equipment, it is suggested that a person familiar with the device be present with a copy of the manual (and drawings) to receive instructions. Many difficulties can be avoided in this manner.

When calling the Support Center, be ready with the following information:

1. Customer name
2. Customer address
3. Person to contact (name, title, telephone number, and extension)
4. Person calling
5. Equipment number (and serial number if applicable)
6. Product part number (and serial number if applicable)
7. Urgency of request
8. Nature of problem
9. Description of inoperative component(s)
10. Additional information/comments that may be helpful

Pneumatic Power Bench Assembly; PN 58338-1

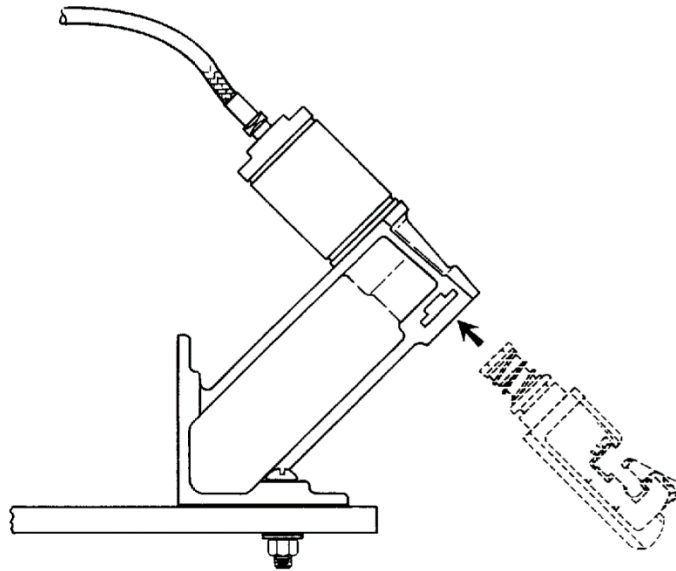


Figure 1

1. INTRODUCTION

The Pneumatic Power Bench Assembly; PN 58338-1 is a pneumatic power unit designed to accept a variety of interchangeable terminating heads or feed track assemblies that terminate unstripped wire in connectors (see Figure 1).

Refer to the instructions packaged with the terminating head or feed track assembly for proper selection, setup and adjustment procedures, terminating and test procedures, and maintenance.



NOTE

Read this and all referenced materials carefully before using the power bench assembly.



NOTE

Dimensions in this instruction sheet are in metric units [with U.S. customary units in brackets]. Figures are for reference only and are not drawn to scale.

2. DESCRIPTION

The power bench assembly consists of a bench mount with an attached pneumatic power assembly, a foot switch, and air tubes which connect the foot switch to the power assembly and the air source to the foot switch (see Figure 2).

The bench mount is attached to a bench or work table with screws or clamps and the foot switch is used to actuate the power assembly.

In normal usage, the pneumatic power bench assembly emits a noise level less than 70 dB and a vibration level of less than 2.5 mm/s².

3. INSTALLATION (GENERAL)



DANGER

To avoid personal injury, **ALWAYS** disconnect handle assembly from the air supply when installing or removing the bench mount.

The bench mount is designed to be installed in either of two positions, as shown in Figure 2. Orientation of the bench mount depends on operator preference and the desired eject direction of terminated connector (refer to Figure 4). Install the bench mount as follows:

1. Place the bench mount on a suitable bench or work table in the desired location and orientation.
2. Mark the location for the screws in the bench surface through the holes of the bench mount flange. Drill holes for the mounting screws.



NOTE

Mounting hardware is not supplied with the power bench assembly and must be supplied by the customer.

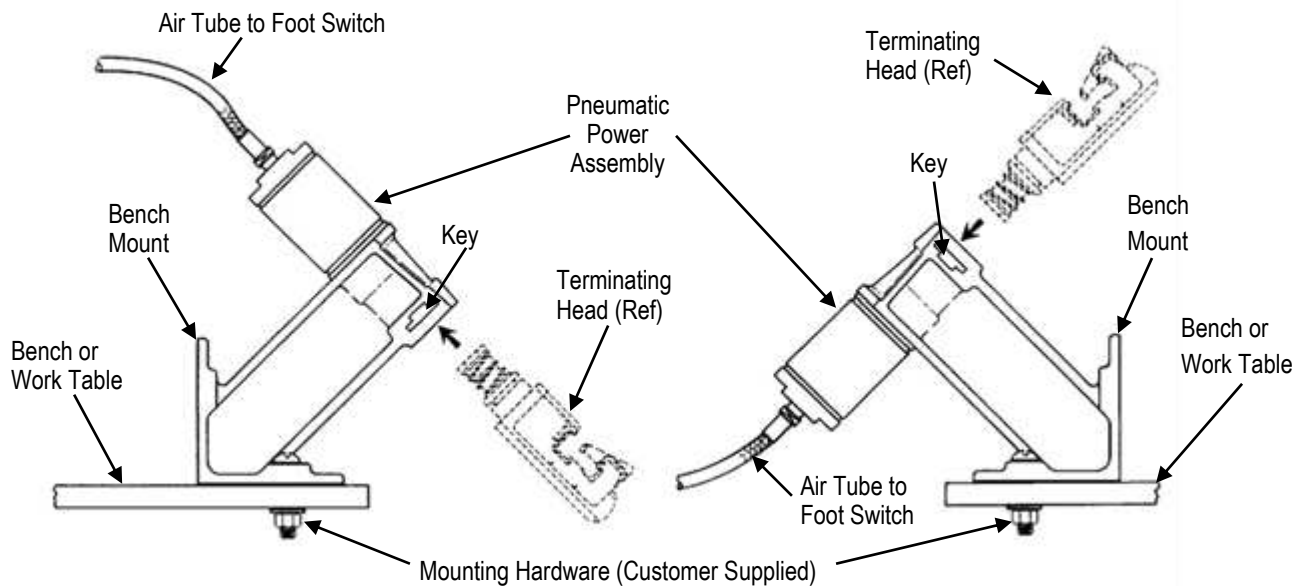


Figure 2

3. Install and secure the screws (lock-washers are recommended).
4. Connect the air tube to an approved air source. It is recommended that a filter-regulator-lubricator unit (with the lubricator adjusted to the minimum setting) be used with the power bench assembly (refer to Figure 3).



DANGER

If not using quick-disconnect fittings to connect the tool to the air supply, provide operators other means to easily disconnect the tool from the air supply. As an example, use of a pneumatic lock-out on the air line that bleeds air after it is turned off would be satisfactory.



NOTE

The power assembly is designed to operate at an air pressure range of 276 - 483 kPa [40 - 70 psi]. Service life of the power assembly can be greatly extended when only the necessary air pressure is applied. Excessive pressure causes unnecessary wear and strain on the power assembly, terminating head or feed track assembly, and connectors.

Filter-Regulator-Lubricator Unit

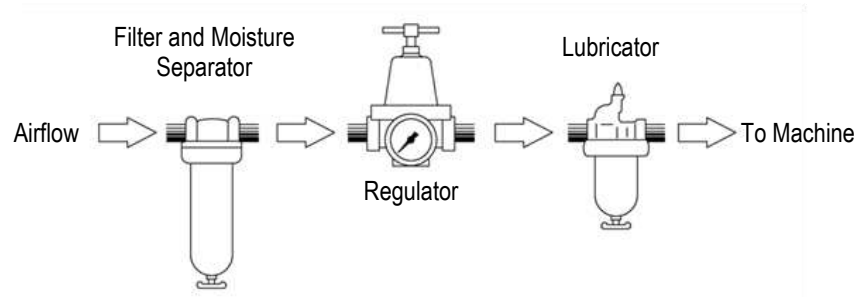


Figure 3

4. INSTALLATION AND REMOVAL OF TERMINATING HEAD OR FEED TRACK ASSEMBLY

1. Disconnect the power bench assembly from the air supply.



DANGER

To avoid personal injury, **ALWAYS** disconnect the power bench assembly from the air supply when installing or removing the terminating head or feed track assembly.

2. Position the blade tip of a screwdriver between the shoulder of the key and the power assembly body. Gently pry the key out of the keyway.
3. Insert the terminating head or feed track assembly into the head entrance of the power assembly body until it bottoms (see Figure 4).
4. Insert the key completely into the keyway to retain the terminating head or feed track assembly.
5. To remove the terminating head or feed track assembly, disconnect the power bench assembly from the air supply, remove the key, and pull the terminating head or feed track assembly out of the power assembly.



CAUTION

DO NOT use this tool as a blunt object, a crushing device, or for any purpose other than crimping the proper specified product. Inappropriate use of the tool could result in personal injury or damage to the tool.

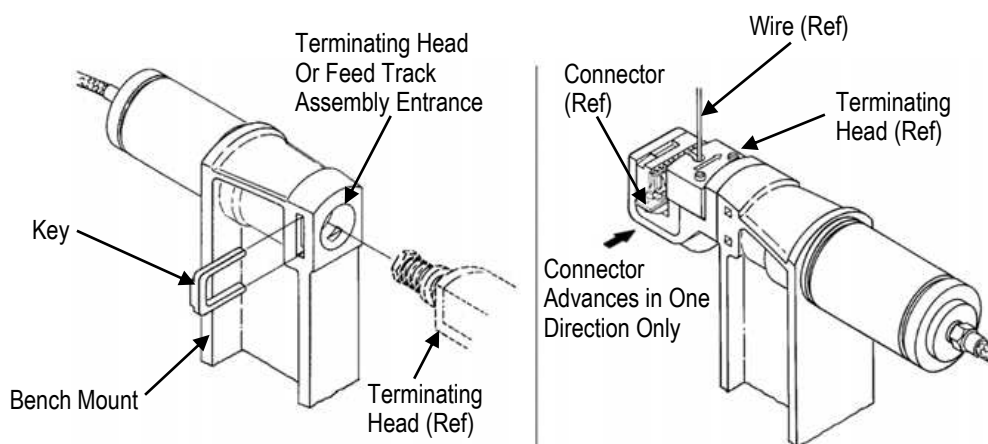


Figure 4

5. OPERATION



NOTE

The following procedure provides only general information concerning crimping. Refer to the instructions packaged with the terminating heads for detailed information including wire stripping dimensions and instructions for positioning terminals in the terminating heads.

1. Insert the connector into the left side of the head.
2. Align the contact to be terminated with the wire inserter of the head. Verify that the locating pawl rests between the connector index ribs.
3. Insert an unstripped wire into the funnel area between the contact and the wire inserter, until it bottoms on the tool base.
4. Depress the footswitch and hold it until the wire inserter bottoms.
5. Release the footswitch.
The wire inserter will retract and the feed slide will automatically advance the connector to the next contact position.
6. Repeat steps 2 through 5 until all contacts have been terminated.
7. Inspect each termination.

6. MAINTENANCE AND INSPECTION



DANGER

*To avoid personal injury, **ALWAYS** disconnect the power bench assembly from the air supply when performing maintenance or inspection procedures.*



NOTE

The following procedures have been established to ensure the quality and reliability of the power bench assembly. A brief inspection should be made daily by the operator, with a more detailed inspection performed on a scheduled basis by quality control personnel.

6.1. Daily Maintenance

Each operator of the unit should be made aware of, and responsible for, the following procedures:

1. Remove dust, moisture, and other contaminants with a clean, soft brush, or clean, lint-free cloth. **Do not use objects that could damage the power bench assembly.**
2. Ensure that all components are in place and properly secured.
3. With the terminating head or feed track assembly in place, connect the air supply and actuate the power assembly by depressing and releasing the foot switch to ensure that the mechanisms and plunger move smoothly and freely.

6.2. Periodic Inspection

Periodic inspections should be performed by quality control personnel. A record of these inspections should remain with the power bench assembly or with personnel responsible for the assembly. A minimum of one inspection per month is recommended. Operator training and skill, amount of use, working conditions, and established company standards are all factors to be considered in scheduling inspections.

Perform each inspection in the following sequence:

1. Remove any accumulated film with a suitable cleaning agent that will not affect plastic material.
2. Make certain that all components are in place and properly secured. Check air tube fittings for leaks.
3. Make a few terminations and inspect them in accordance with the procedure described in the instructions packaged with the terminating head or feed track assembly.
4. Check for chipped, cracked, worn, or broken areas. If damage is evident, repair is necessary. Refer to Section 7, Replacement and Repair.

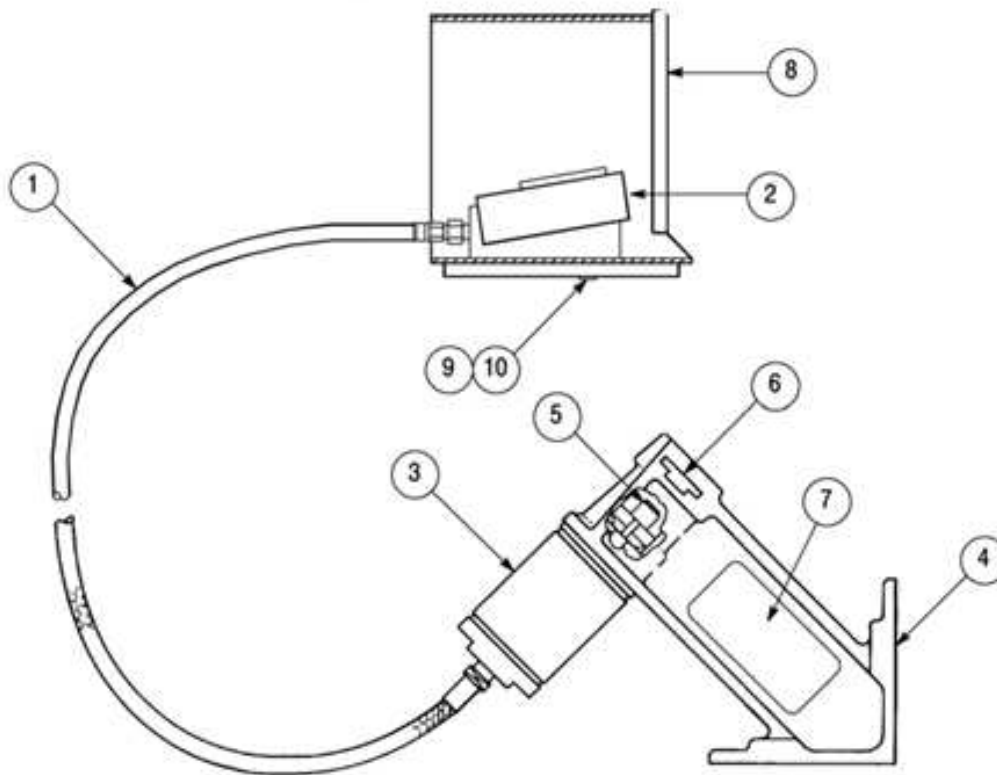
7. REPLACEMENT AND REPAIR

Customer-replaceable parts are listed in Figure 5. Parts other than those listed should be replaced by TE to ensure quality and reliability. For customer repair service or to order replacement parts, call 1-800-522-6752, or fax your purchase order to 717-986-7605, or write to: Customer Service (038-035), TE Connectivity Corporation, PO Box 3608, Harrisburg, PA 17105-3608.

CUSTOMER SERVICE (038-035)
TE CONNECTIVITY CORPORATION
P0 BOX 3608
HARRISBURG, PA 17105-3608

or

TYCO ELECTRONICS CORPORATION UK LTD
BARTON TORS
BIDEFORD
NORTH DEVON, GREAT BRITAIN



ITEM	PART NUMBER	DESCRIPTION	QTY PER ASSY
1	312622-2	Subassembly, Air Tube	2
2	24198-1	Air Valve, 3-Way	1
3	313874-1	Air Cylinder	1
4	313852-1	Bench Mount	1
5	312141-1	Nut, Cam Adjustment	1
6	312140-1	Key	1
7	2119907-4	Label, Ce	1
8	453866-1	Guard, Foot Switch	1
9	4-23715-1	SCREW, Machine Pan Head, 4-40 X .19 In.	1
10	21060-7	SCREW, Slotted Pan Head, 4-40 X .25 In.	1

Figure 5

Pneumatic Diagram for Pneumatic Power Bench Assembly; PN 58338-1

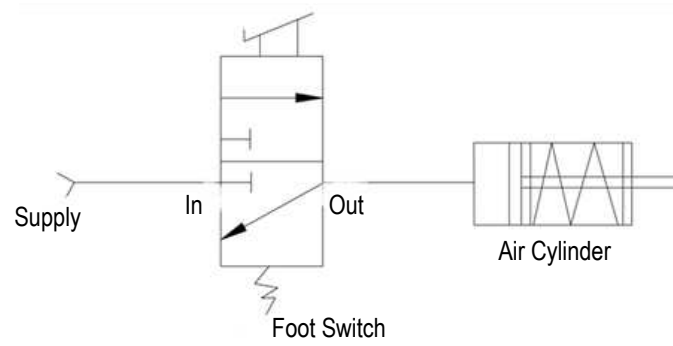


Figure 6

8. REVISION SUMMARY

Initial release (supersedes 408-9393)