

JACK PART NUMBER			CABLE (RG/U)	JACK DIMENSION (mm [In.])		
CURRENT (TE) NUMBER	PREVIOUS NUMBER	MILITARY M39012/59-		A	B	C
1051983-1	2034-8008-90	3008	122	2.54 [.100]	0.89 [.035]	4.45 [.175]
1051984-1	2034-8009-90	3009	58, 142, 223	3.10 [.122]	1.04 [.041]	5.56 [.219]
1051985-1	2034-8010-90	3010	303	3.10 [.122]	1.04 [.041]	5.56 [.219]

Figure 1

1. INTRODUCTION

SMA straight bulkhead feed-through cable jacks (solder attachment) listed in Figure 1 are designed to be terminated to the corresponding coaxial cable using the following tools:

TOOL DESCRIPTION	TOOL PART NUMBER	
	CURRENT (TE) NUMBER	PREVIOUS NUMBER
Contact Holder Assembly	1055454-1	2098-5221-10 (T-4578)
Locator Tool	1055446-1	2098-5213-02 (T-948)

NOTE



Dimensions in this instruction sheet are in millimeters [with inches in brackets]. Figures are not drawn to scale.

These jacks can be mounted onto a panel with a thickness range of 1.40 through 2.62 [.055 through .103].

2. DESCRIPTION (See Figure 1)

The jack consists of a ferrule, contact, housing, O-ring, lockwasher, and jam nut.

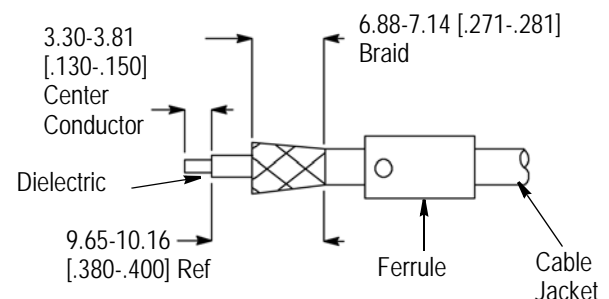
3. ASSEMBLY PROCEDURE

DANGER



Follow safety precautions included with the tools used for assembly.

- Slide the ferrule (end without holes first) onto the cable.
- Strip the cable to the dimensions shown in Figure 2. Take care not to nick any part of the cable. Flare the braid.



Note: Not to Scale

Figure 2

- Tin the center conductor of the cable.
- Place the contact in the contact holder assembly. Heat the contact with a soldering iron, then carefully push the contact over the cable center conductor

until it rests firmly against the dielectric. See Figure 3. Remove excess solder and splatter.

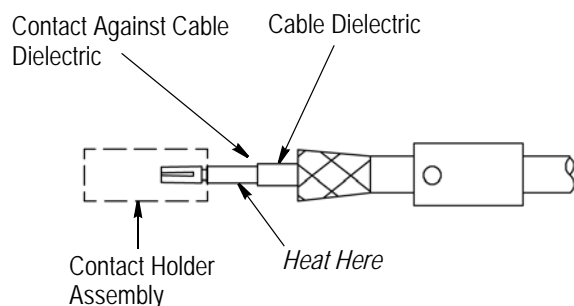


Figure 3

5. Thread the housing onto the locator tool. Secure the housing using a small bench vise.

6. Insert the contact into the back of the housing until it is firmly seated. DO NOT allow the cable braid to enter the housing. Refer to Figure 4, Detail A.

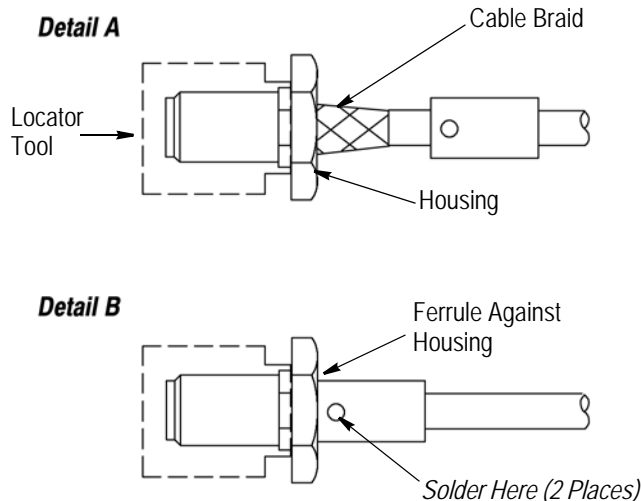


Figure 4

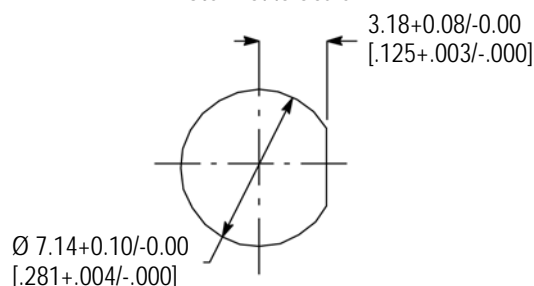
7. Slide the ferrule over the cable braid and against the housing. Holding the cable firmly in position, solder the cable through the holes in the ferrule. Trim excess cable braid strands. See Figure 4, Detail B.

8. Cut the panel using the dimensions shown in Figure 5.

9. Install the O-ring onto the front of the housing. Insert the housing through the panel cutout until the O-ring is flat against the panel. Install the lockwasher and jam nut onto the front of the jack. Tighten the jam nut. Refer to Figure 5.

Recommended Panel Cutout

Note: Not to Scale



Panel Mounting

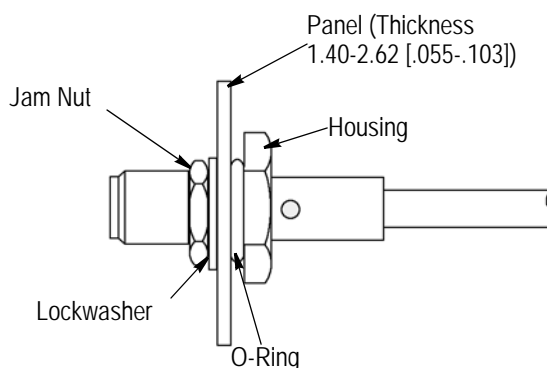


Figure 5

4. REPLACEMENT AND REPAIR

DO NOT re-use a soldered contact, housing, or ferrule by removing the cable.

Components of the jack are not repairable. Remove and replace any defective or damaged components.

5. REVISION SUMMARY

Since the previous release, the new company logo has been applied.