

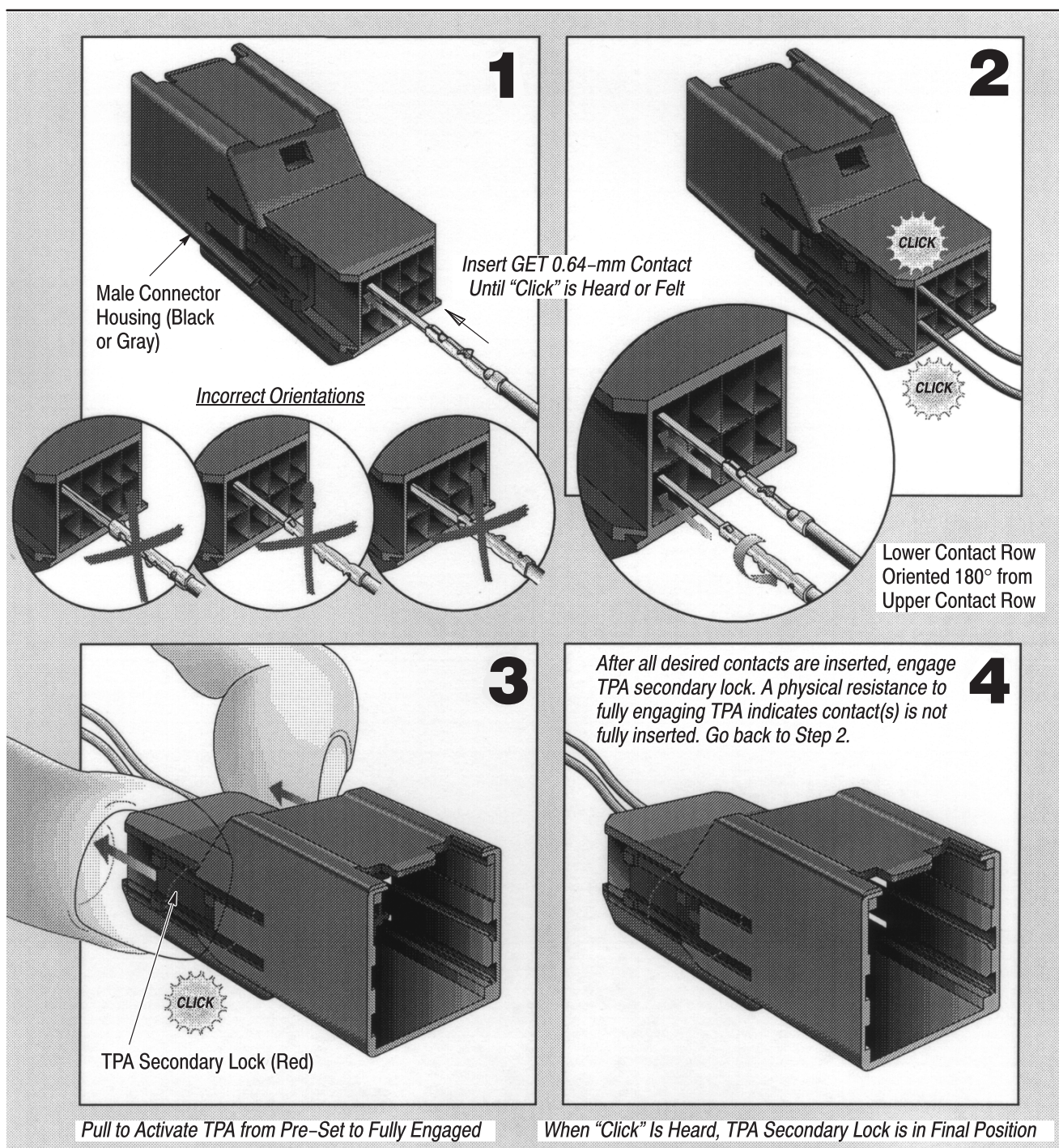
## 1. MOUNTING

**NOTE**

*This document is representative of all connector positions in this product family.*



Reasons for reissue of this instruction sheet are provided in Section 3, REVISION SUMMARY.

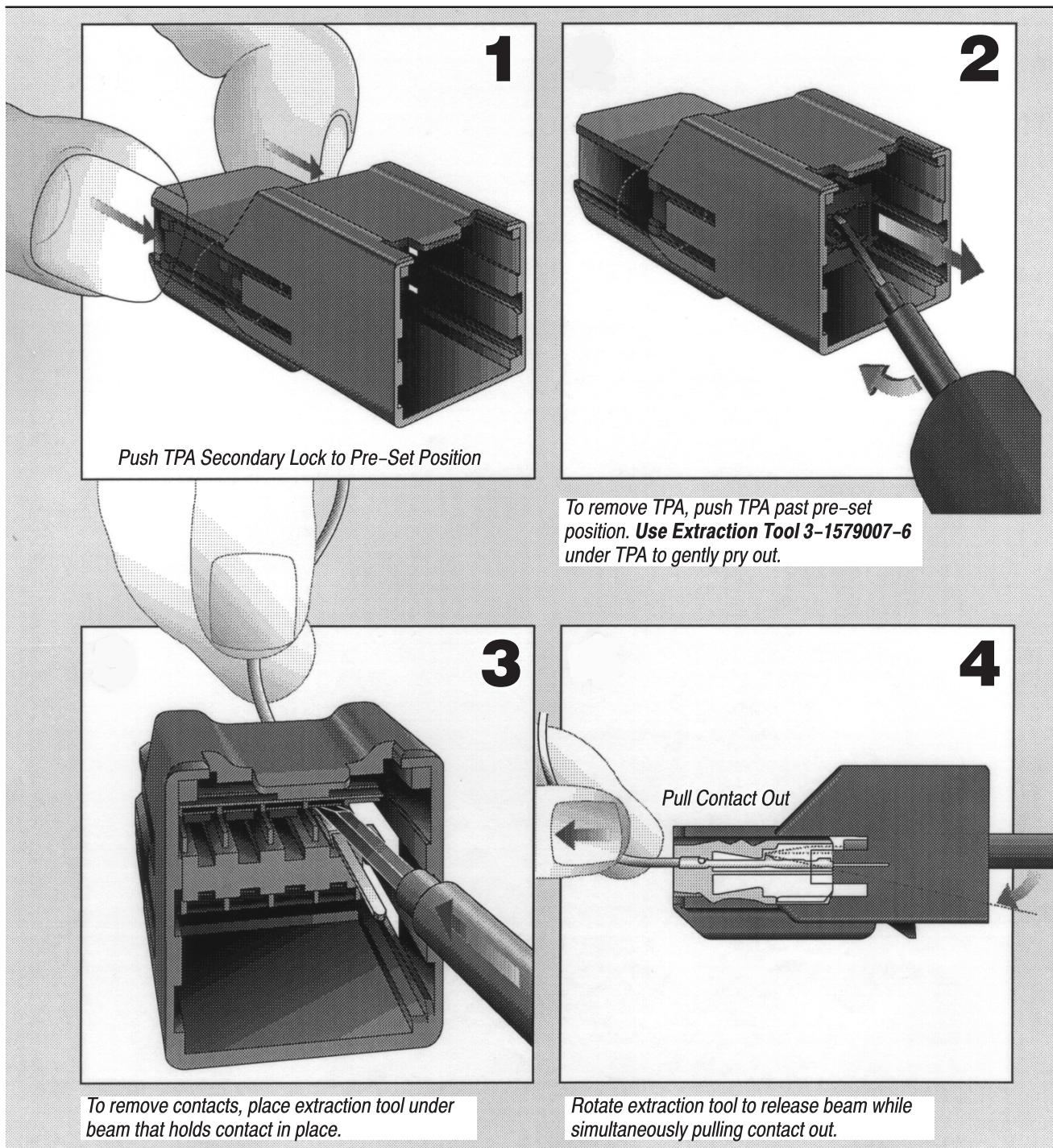




## 2. DISMOUNTING

**NOTE**

DO NOT re-use damaged or worn contacts; instead, replace them with new contacts and discard the old ones.



## 3. REVISION SUMMARY

Revisions to this instruction sheet include:

- Updated document to corporate requirements