

FIG. 1

1. This Instruction Sheet explains how to assemble the 10 Circuit MATE-N-LOK Connector shown in Figure 1. Each Connector consists of one Cap, two Plugs, Pin Contacts and Socket Contacts. The Cap accepts Pin Contacts; the Plugs accept Socket Contacts. Read these instructions carefully before assembling the Connector.

2. CONTACT CRIMPING

- To determine which Contacts to use in these Housings, see AMP Instruction Sheet 7300.
- Crimp Strip-Form Contacts using the proper Auto-Machine Applicator and Loose-Piece Contacts using the proper Hand Tool.

3. CONTACT INSERTION

NOTE: Use Pin Contacts only in the Cap and Socket Contacts only in the Plug.

- For Single-Wire leads, push the Socket or Pin into the Housing as far as it will go. See Figure 1. Pull back lightly on the wire to make sure the Contact is latched in place.
- For two-wire leads, first align the Contact with the cavity as shown in Figure 2. Then, push the Contact into the Housing as far as it will go. Pull back lightly on the wire to make sure the Contact is latched in place.

NOTE: Two-wire leads may be used only in Socket Housings.

- When inserting Contacts crimped to small, flexible wire, use A-MP Insertion Tool No. 91002-□.

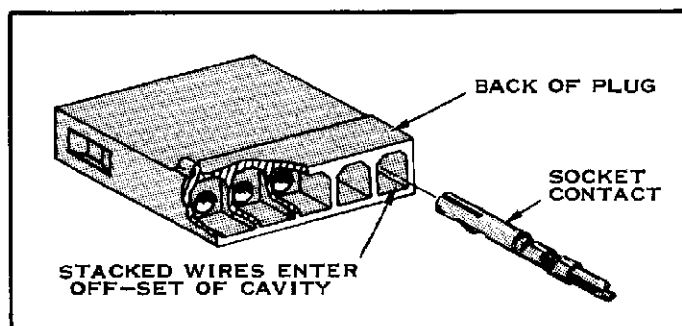


FIG. 2

4. HOUSING ENGAGEMENT

Each Plug has a Polarizing Rib to insure proper mating. In addition, one Plug has an Index Rib for visual alignment. See Figure 3.

- Align the Index Rib on the Plug with the Index Rib on the Cap. Push the Plug into the Cap until it bottoms. Insert the Polarizing Rib on the second Plug into the groove in the Cap. Push the Plug until it bottoms. See Figure 3.
- To disengage the Housings, simply pull them apart.

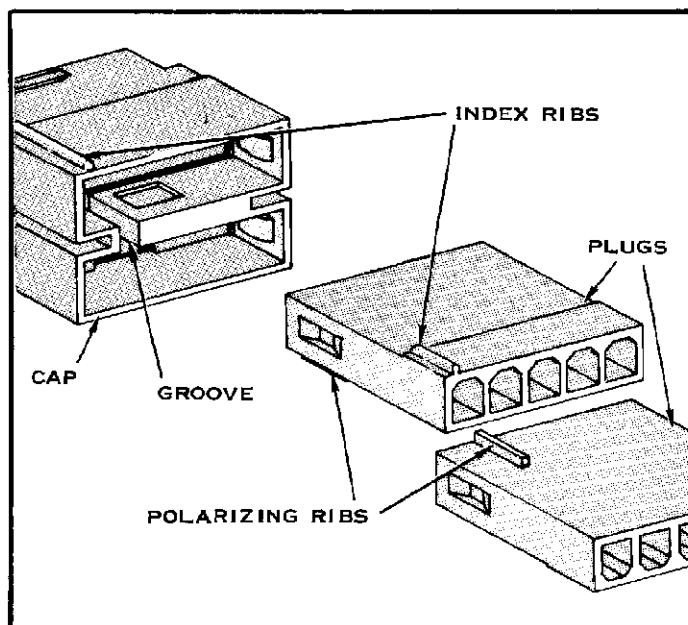


FIG. 3

5. CONTACT EXTRACTION

A-MP Tools are recommended to extract Pins and Sockets. Use A-MP Tool No. 465644-1 for both Pins and Sockets when you can clearly see the Contacts and easily reach them. If either the view or the access is restricted, use A-MP Tool No. 1-305183-1 for the Pins and 1-305183-2 for the Sockets.

6. PANEL MOUNTING

- (a) To mount the Cap to the Panel or Motor, first stamp the cutout using the dimensions in Figure 4. Be sure the Punch and Housing enter the Panel from the same side. See Figure 5.
- (b) Install the Cap in the Panel as shown in Figure 5, using a rocking motion. Slide one Locking Ear under the Panel, then rock the Housing to the other side and slide the other Locking Ear under the Panel.

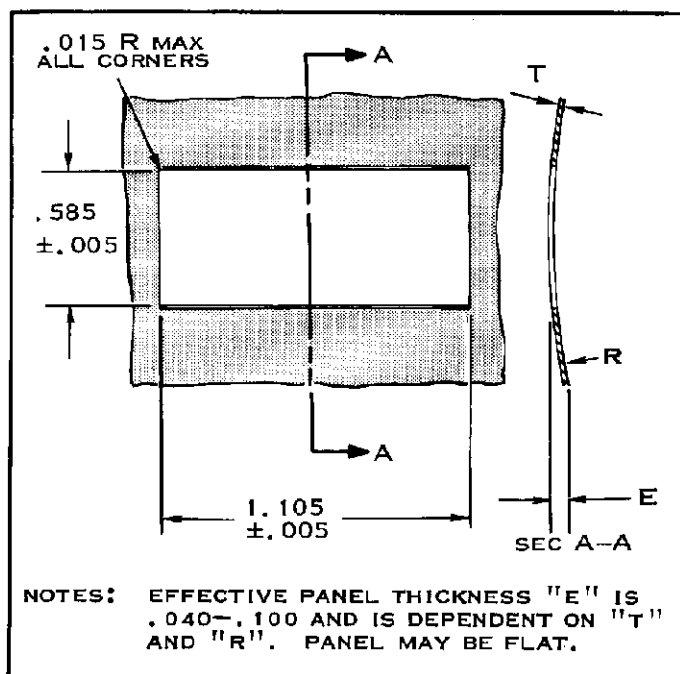


FIG. 4

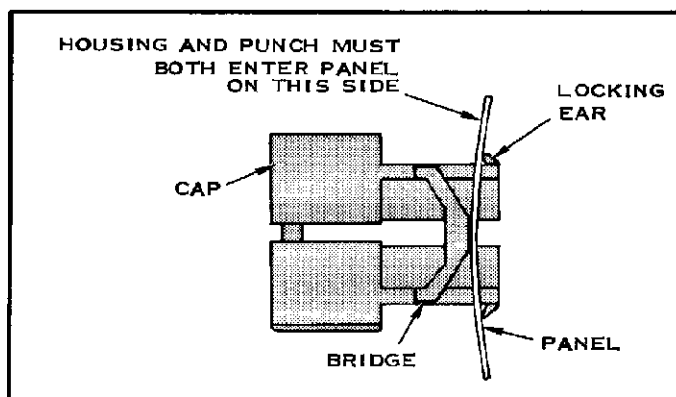


FIG. 5