

CONNECTOR PRODUCTS DIVISION

1. The Locking Latches (see Figure 1) covered by these instructions are used to lock Series "G" Plugs and Receptacles together. The Latches are attached to a Plug or Receptacle which contains no other Accessories and which mates with a Plug or Receptacle to which has been attached a Shield and Cable Clamp.

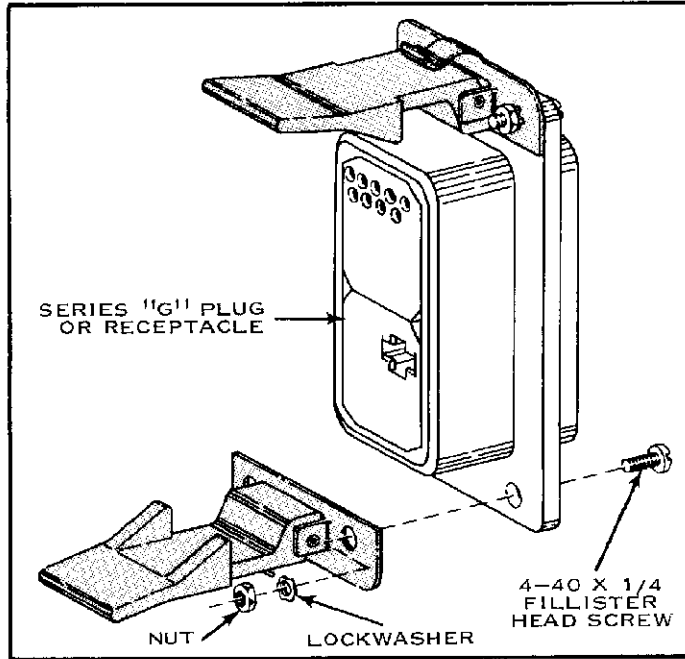


FIG. 1

\*Trademark of AMP Incorporated

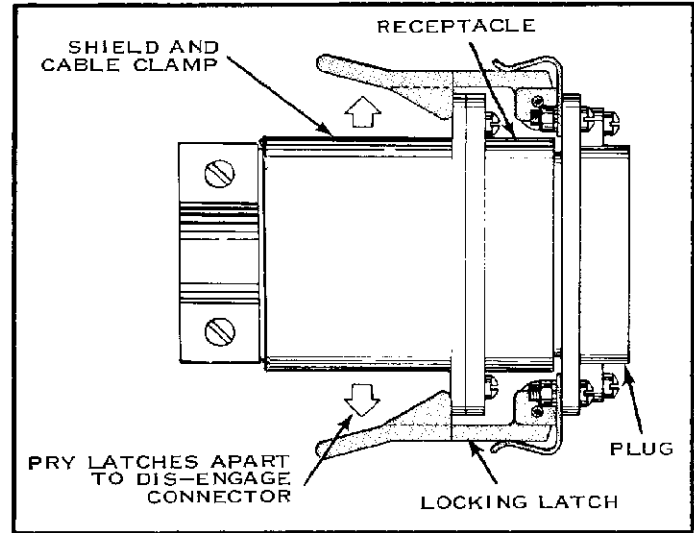


FIG. 2

## 2. MOUNTING LATCHES

Mount Locking Latches to Plug or Receptacle as shown in Figure 1. Use No. 4-40 x 1/4" Fillister Head Screws with Lockwashers and Nuts.

## 3. CONNECTOR ENGAGEMENT

- (a) To engage Plug and Receptacle, simply push Plug into Receptacle until Locking Latches engage Shield and Cable Clamp.
- (b) To dis-engage Connector, pry Latches apart (see Figure 2) and pull Plug out of Receptacle.

© 1966 by AMP Incorporated. All international rights reserved. A-MP products covered by U. S. and foreign patents and/or patents pending.