



AMP INCORPORATED  
HARRISBURG, PENNA.

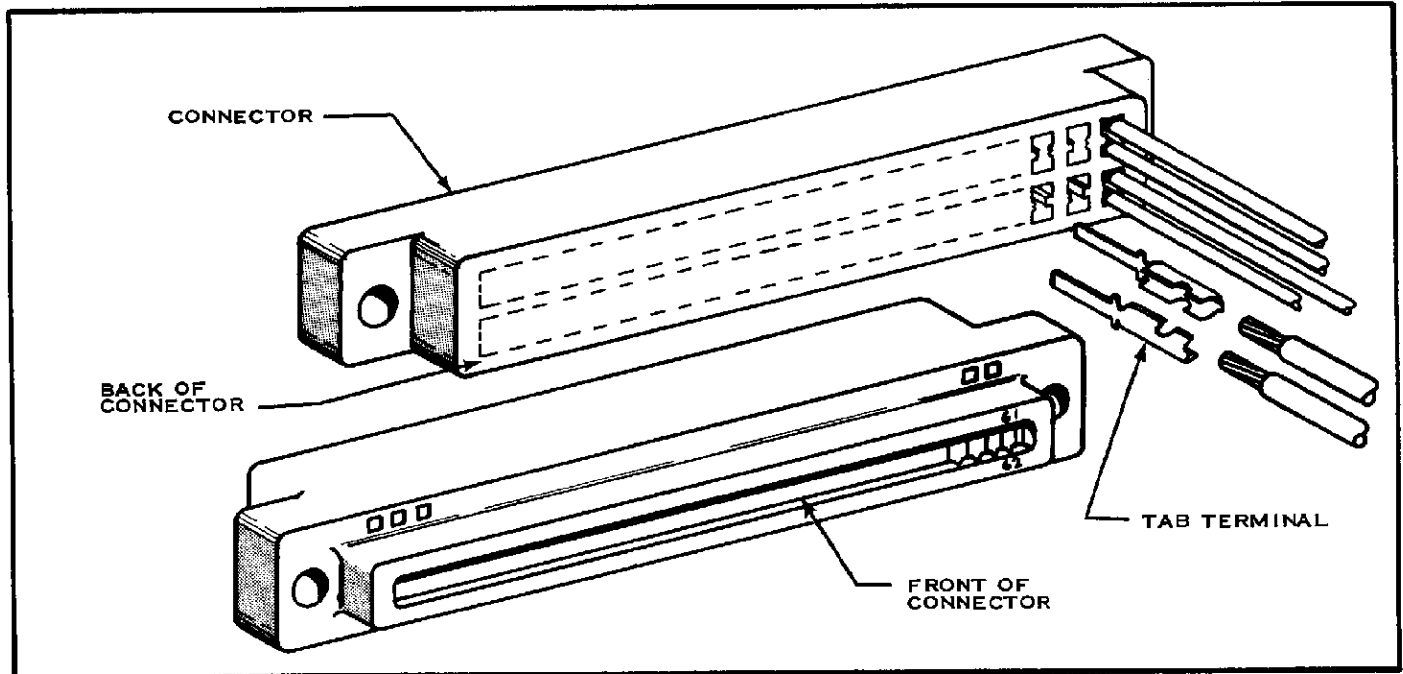
AMP-TAB\* QUAD (2-TAB)  
CONNECTOR ASSEMBLIES  
FOR PRINTED-CIRCUIT BOARDS

IS 7090

RELEASED 10-18-63

REVISED 8-20-65

CONNECTOR PRODUCTS DIVISION



\*Trademark of AMP Incorporated

FIG. 1

1. These instructions cover AMP-TAB Quad Connector Assemblies. See Figure 1. Each Assembly consists of a Connector and Tab Terminals. The Connector contains pre-assembled Receptacle Contacts. Read these instructions carefully before using these Assemblies.

**2. TAB TERMINAL SELECTION & CRIMPING**

Tab Terminals are available in Continuous Strips or in Loose-Piece (LP) form.

(a) Select the proper Terminal for your application from Figure 2.

(b) Crimp Strip Terminals using the proper A-MP\* Auto-Machine Applicator. Refer to the AMP Instruction Manual which is shipped with the Applicator.

(c) Crimp Loose-Piece (LP) Terminals using the A-MP Hand Tools listed in Figure 2. The AMP Instruction Sheet packaged with each Tool will explain the use of the Tool.

**3. TAB TERMINAL INSERTION**

Insert Crimped Terminals into Back of Connector as shown in Figure 4.

(a) Push Terminal into Back of Connector as far as it will go. Four Tab Terminals may be used at each circuit position in the Connector.

(b) Pull back lightly on Wire to make sure Terminal is latched in place.

(c) For Terminals crimped to small, flexible Wire, it may be necessary to use A-MP Insertion Tool No. 91002.

NOTE: Back of Connector is the Wire-Insertion side. Front of Connector is the Card-Insertion side.

WIRE RANGE	INSULATION DIAMETER	TAB TERMINAL NUMBER		A-MP CRIMPING TOOL NUMBER
		STRIP	LOOSE PIECE	
26-22	.035-.054	66143-□	66166-□ (66143-□LP)	90090-□
22-20	.046-.062	66144-□	66169-□ (66144-□LP)	90174-□
22-18	.054-.074	66144-□	66169-□ (66144-□LP)†	90090-□

† WHEN CRIMPED IN HAND TOOL NO. 90090-□, THIS TERMINAL MAY NOT BE USED IN CONNECTORS WITH .100" CONTACT SPACING.

FIG. 2

**4. KEYING PLUGS**

There are two types of Keying Plugs for use in AMP-TAB Connectors.

(a) Use Inter-Contact Keying Plug No. 582501 for Connectors with .125" - and .156" - Contact Spacing. This Plug can be used only between Contact positions.

(b) Use On-Contact Keying Plug No. 582507 for all Connectors. This Plug can be used only at Contact positions.

(c) Refer to the AMP Instruction Sheets packaged with the Keying Plugs for proper insertion procedure.

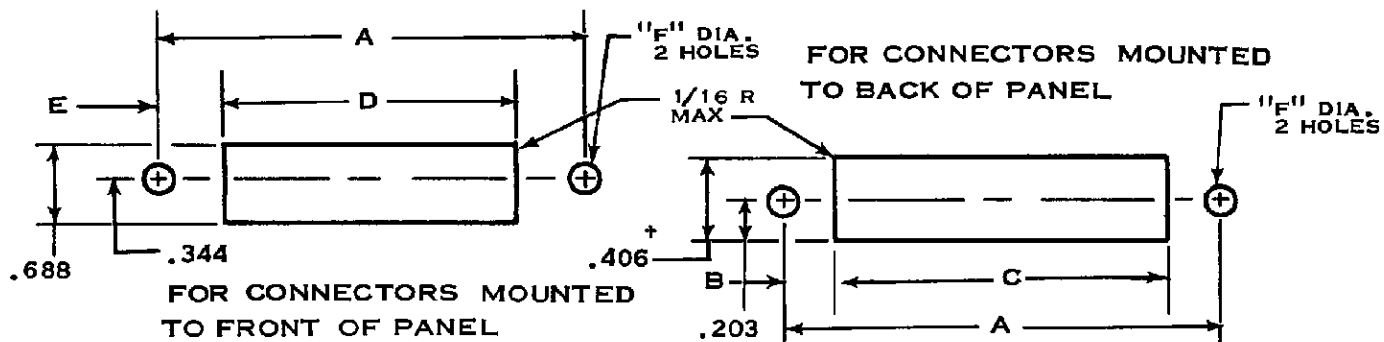
**5. TAB TERMINAL EXTRACTION**

To remove Tab Terminal from Connector, use A-MP Extraction Tool No. 91017-3. Refer to the instructions packaged with the Tool for the proper extraction procedure.

**6. PANEL MOUNTING**

The dimensions in Figure 6 may be used to make Panel Cut-outs for mounting AMP-TAB Connectors.

© 1963, 1965 by AMP Incorporated. All international rights reserved. A-MP products covered by U. S. and foreign patents and/or patents pending.



CIRCUIT SPACING	NO. OF CIRCUITS	CONN. NUMBER	A	B	C	D	E	F	
								-1	-2
.100	10	582583-□	1.700	.184	1.332	1.152	.274	.128	.156
		582701-□							
	15	582585-□	2.200	.184	1.832	1.652	.274	.128	.156
		582703-□							
	18	582587-□	2.500	.184	2.132	1.952	.274	.128	.156
		582705-□							
	22	582589-□	2.900	.184	2.532	2.352	.274	.128	.156
		582707-□							
	31	582591-□	3.800	.184	3.432	3.252	.274	.128	.156
		582710-□							
	43	582593-□	5.000	.184	4.632	4.452	.274	.128	.156
		582712-□							
.125	10	582595-□	1.791	.134	1.523	1.392	.199	.128	.150
		582714-□							
	15	582597-□	2.416	.134	2.148	2.017	.199	.128	.150
		582716-□							
	18	582599-□	2.791	.134	2.523	2.392	.199	.128	.150
		582718-□							
	22	582601-□	3.291	.134	3.023	2.892	.199	.128	.150
		582720-□							
	31	582603-□	4.250	.109	4.032	3.994	.128	.128	.150
		582722-□							
	41	582605-□	5.609	.164	5.281	5.243	.183	.128	.150
		582724-□							
43	582607-□	5.916	.134	5.648	5.517	.199	.128	.150	
	582726-□								
.156	10	582609-□	2.158	.120	1.920	1.648	.255	.128	.150
		582728-□							
	15	582611-□	2.938	.120	2.700	2.428	.255	.128	.150
		582730-□							
	18	582613-□	3.406	.120	3.168	2.896	.255	.128	.150 †
		582732-□							
	22	582528-□	4.030	.120	3.791	3.520	.255	.128	.150
		582734-□							
	30	582793-□	5.278	.120	5.040	4.768	.255	.128	.150
		582797-□							
	31	582615-□	5.434	.120	5.196	4.924	.255	.128	.150
		582736-□							
43	582617-□	7.306	.120	7.068	6.791	.255	.128	.150	
	582738-□								

† THIS DIMENSION IS FOR -3 RATHER THAN -2