

LOCKING SPRING KIT	SPRING CATCH KIT	M SERIES CONNECTOR SIZE
201915-[ ] (1)	201916-[ ] (1)	6, 14, 20, 41
201921-[ ] (2)	201922-[ ] (2)	6, 14, 20, 41
201917-[ ] (2)	201918-[ ] (1)	21, 26

(1) Contains 1      (2) Contains 2

Figure 1

### 1. INTRODUCTION

The locking spring assembly consists of one locking spring and one spring catch. Available kits are listed in Figure 1. These kits are used to lock together male and female M Series connectors having 6, 14, 20, 21, 26, or 41 positions.

This instruction sheet supercedes 408-1408.

Reasons for reissue of this instruction sheet are provided in Section 5, REVISION SUMMARY.

### 2. DESCRIPTION

The locking spring kit contains one or two locking springs, and the spring catch kit contains one or two spring catches. See Figure 1. Two locking springs and two spring catches are required for a pair of mating connectors. Hardware necessary (hex nuts, lock washers, center guide pins, and center guide sockets) to assemble the locking spring assemblies onto the connectors are not included with these kits.

### 3. ASSEMBLY PROCEDURE (See Figure 2)

1. If applicable, mount the connector to the panel.
2. Install the center guide pins and sockets or 4-40 x 1/4 UNF fillister head screws onto the connectors.
3. Install the locking springs and spring catches onto the center guide pins and sockets. Thread the lock washers and hex nuts onto the threads, then tighten the hex nuts.

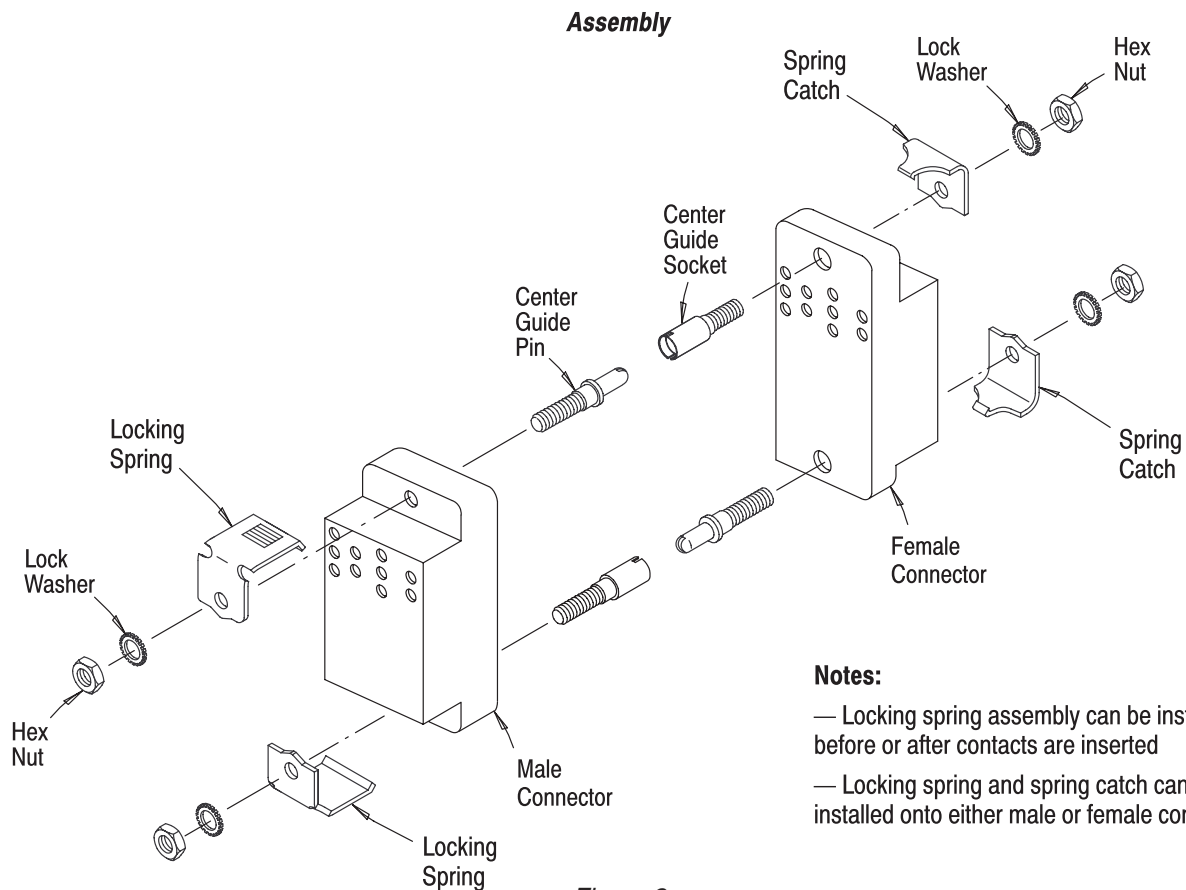


Figure 2

#### Notes:

- Locking spring assembly can be installed before or after contacts are inserted
- Locking spring and spring catch can be installed onto either male or female connector

**4. MATING AND UNMATING**

To mate the connectors, push the connectors together until each spring catch locks onto the serrations of each locking spring. Keep pushing the connectors together until they are tightly mated. See Figure 3.

**NOTE** *If a spring catch has difficulty moving over a locking spring, squeeze the locking springs together slightly before pushing the connectors together.*

To unmate the connectors, apply pressure to the locking springs until the spring catch is free from the serrations. Pull the connectors apart. See Figure 3.

**5. REVISION SUMMARY**

Revisions to this instruction sheet include:

- Updated document to corporate requirements
- Removed obsolete kits and modified Figure 1
- Added notes to Figure 2

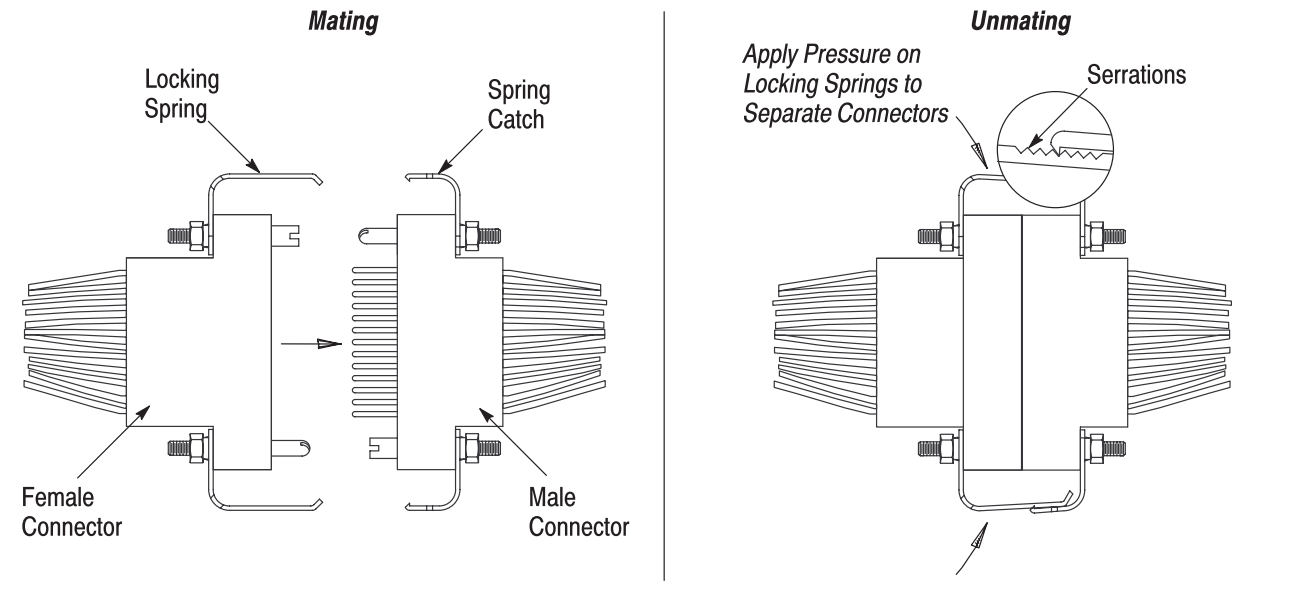


Figure 3