

CONNECTOR PRODUCTS DIVISION

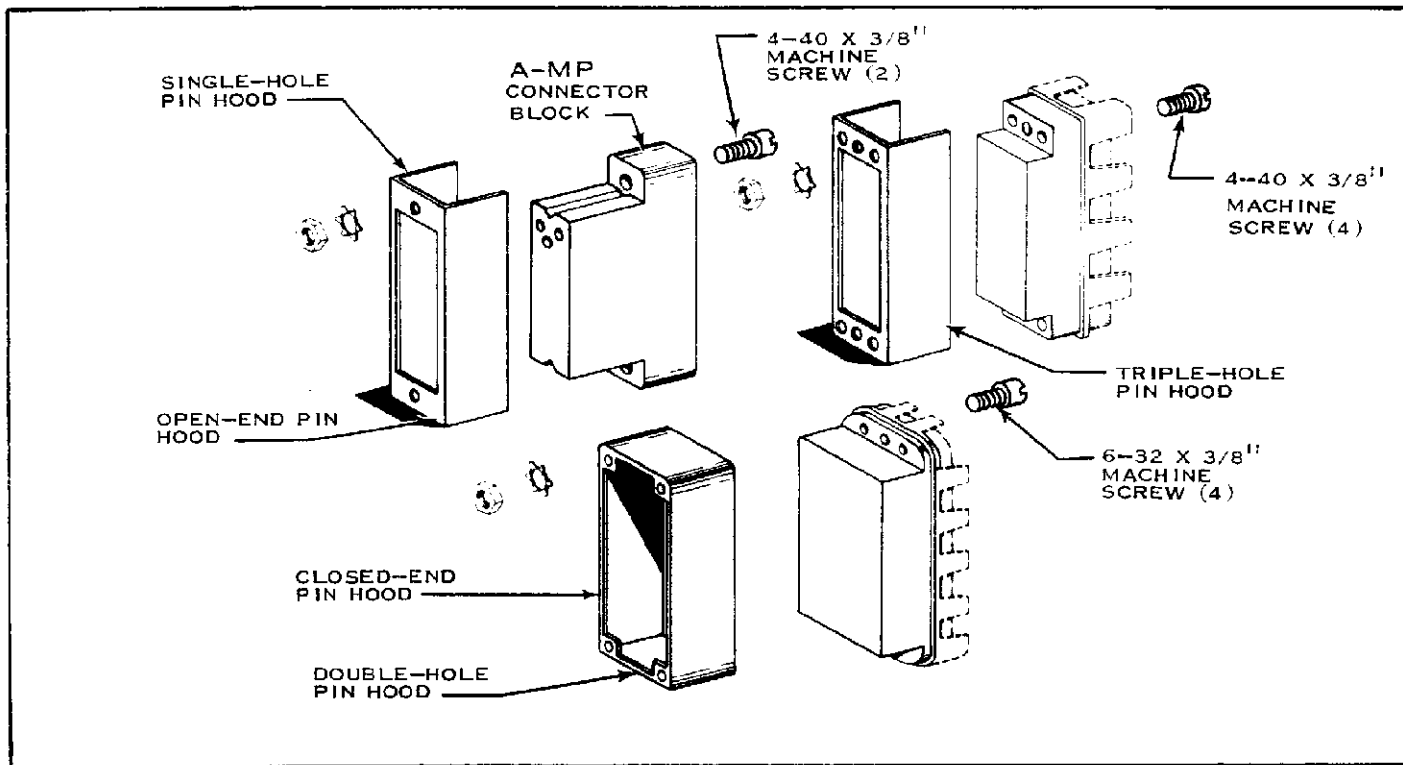


Fig. 1

1. This Instruction Sheet covers the A-MP Pin Hoods listed in Figure 2. These Pin Hoods are available in three different types. Single-Hole Pin Hoods are used on A-MP 14, 20, 21, 26 and 41 Position Series "M" Connector Blocks. Triple-Hole Pin Hoods are used on 64 and 50 Position Series "M" Blocks and 40 and 50 Position Miniature DUALATCH Blocks. Double-Hole Pin Hoods are used on 75 and 104 Position Series "M" Blocks and 132 Position Miniature DUALATCH Blocks. See Figure 1.

2. PIN HOOD SELECTION

- (a) Refer to Figure 2 to make sure you have the proper A-MP Pin Hood for your application.
- (b) Figure 2 also shows the proper Accessory to use if Contact Protection is needed on both Connector Blocks.

3. ATTACHING PIN HOODS

- (a) Before inserting Contacts into Connector Block, slide Pin Hood over end of Cable. It may be more convenient to attach Pin Hood to Connector Block before inserting Contacts.
- (b) To attach Single-Hole Pin Hood to Block, use either two 4-40 x 3/8" Machine Screws with Nuts and Lockwashers or A-MP Series "M" Center Guide Pins and/or Sockets.
- (c) To attach Double-Hole Pin Hood, use either four 6-32 x 3/8" Screws or A-MP Series "M" Corner Guide Pins and Sockets.
- (d) To attach Triple-Hole Pin Hood, use either four 4-40 x 3/8" Screws or A-MP Series "M" Corner Guide Pins and Sockets.

NOTE: When attaching Pin Hood to Miniature DUALATCH Blocks you may also use Miniature DUALATCH Corner Guide Pins.

NUMBER OF POSITIONS	CONNECTOR TYPE	PIN HOOD TYPE & NUMBER	FOR PIN PROTECTION ON MATING BLOCK USE:
14	SERIES "M"	CEE † - 201347	
		OEE † - 201363	SHIELD NO. 200477 OR 201378
20	SERIES "M"	CEE - 201348	
		OEE - 201362	SHIELD NO. 200480 OR 201380
26	SERIES "M"	CEE - 201349	SHIELD NO. 201576
		OEE - 201785	SHIELD NO. 200488 OR 201382
34	SERIES "M"	CEE - 201350	PIN HOOD NO. 202434 OR SHIELD NO. 201571
		CEI † - 202434	PIN HOOD NO. 201350 OR SHIELD NO. 201571
		OEE - 202587	PIN HOOD NO. 201786 OR SHIELD NO. 200490 OR 201384
		OEI † - 201786	PIN HOOD NO. 202587 OR SHIELD NO. 200490 OR 201384
40	MIN. DUALATCH	CEE - 201350	PIN HOOD NO. 202434
		CEI - 202434	PIN HOOD NO. 201350
		OEE - 202587	PIN HOOD NO. 201786
		OEI - 201786	PIN HOOD NO. 202587
50	SERIES "M"	CEE - 201390	PIN HOOD NO. 202394 OR SHIELD NO. 201443
		CEI - 202394	PIN HOOD NO. 201390 OR 202579 OR SHIELD NO. 201443
		OEE - 201317	SHIELD NO. 200492 OR 201386
		CEE - 201390	PIN HOOD NO. 202394
60	MIN. DUALATCH	CEE - 202579	
		CEI - 202394	PIN HOOD NO. 201390 OR 202579
		OEE - 201317	
		CEE - 201368	PIN HOOD NO. 201369
75	SERIES "M"	CEI - 201369	PIN HOOD NO. 201369
		OEI - 202581	
		CEE - 201346	PIN HOOD NO. 201346
104	SERIES "M"	CEI - 201364	PIN HOOD NO. 201346
		CEE - 201346	PIN HOOD NO. 201346
132	MIN. DUALATCH	CEI - 201364	PIN HOOD NO. 201346

† CEE = CLOSED END - EXTERNAL, CEI = CLOSED END - INTERNAL, OEE = OPEN END - EXTERNAL AND OEI = OPEN END - INTERNAL.

‡ SPECIAL GROUNDING - TYPE PIN HOOD. Fig. 2

*Trademark of AMP Incorporated