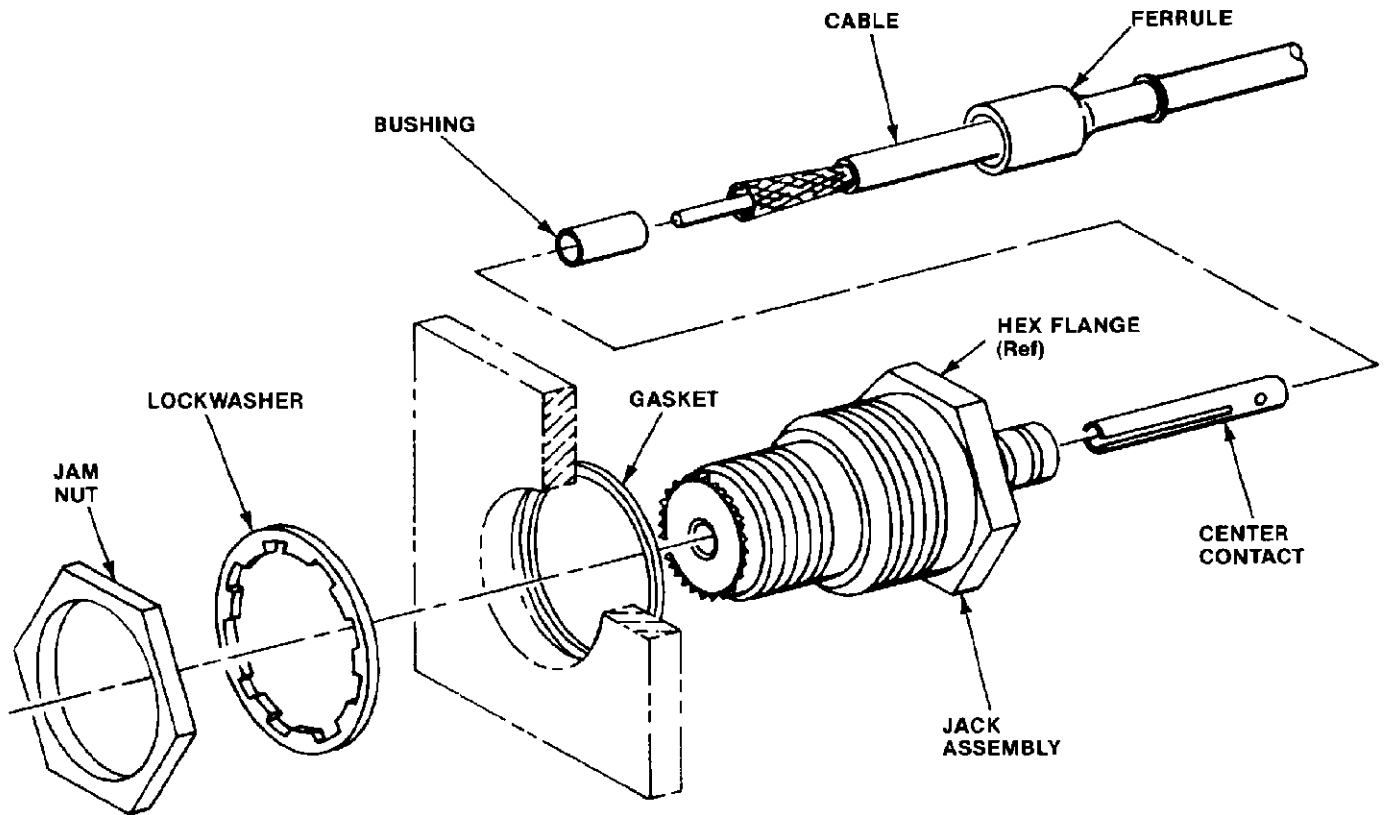


BULKHEAD JACK CONNECTOR



RG/U CABLE	BUSHING	CONNECTOR PART NO.	FLANGE SHAPE	CONTACT PLATING	GASKET	DIE ASSY	HAND TOOL
188	Yes	228665-2	Hex	Tin	No	58159-1	59983-1 (IS 6777)
	Yes	228903-1	Round	Gold	Yes		58124-1 (IS 6888)
	Yes	228903-2	Round	Tin	Yes		
58, 58A 58B, 58C	No	228903-3	Round	Tin	No	58158-1	220149-1 (IS 2578) 58124-1 (IS 6888)

* USED WITH AMP PNEUMATIC TOOL 69365-3 OR WITH AMP HAND TOOL ASSEMBLIES 69710 AND 69710-1.

Fig. 1

1. INTRODUCTION

This instruction sheet (IS) covers the selection and assembly of the AMP Coaxial Miniature UHF Bulkhead Jack Connectors listed in Figure 1. Read these instructions thoroughly before assembling the connectors.

NOTE

All dimensions on this instruction sheet are in inches.

2. DESCRIPTION (Figure 1)

Each bulkhead jack connector consists of a jack

assembly, a center contact, a ferrule, a lockwasher, a jam nut, and a bushing and gasket when applicable. Connectors are available for the various cable sizes listed in Figure 1.

3. ASSEMBLY PROCEDURE

Determine the cable size and the contact plating needed for the application; then refer to the chart in Figure 1, and select the appropriate connector and tooling.

Copyright 1986 by AMP Incorporated, Harrisburg, PA. All International Rights Reserved. AMP Incorporated products covered by U.S. and Foreign patents and/or patents pending.

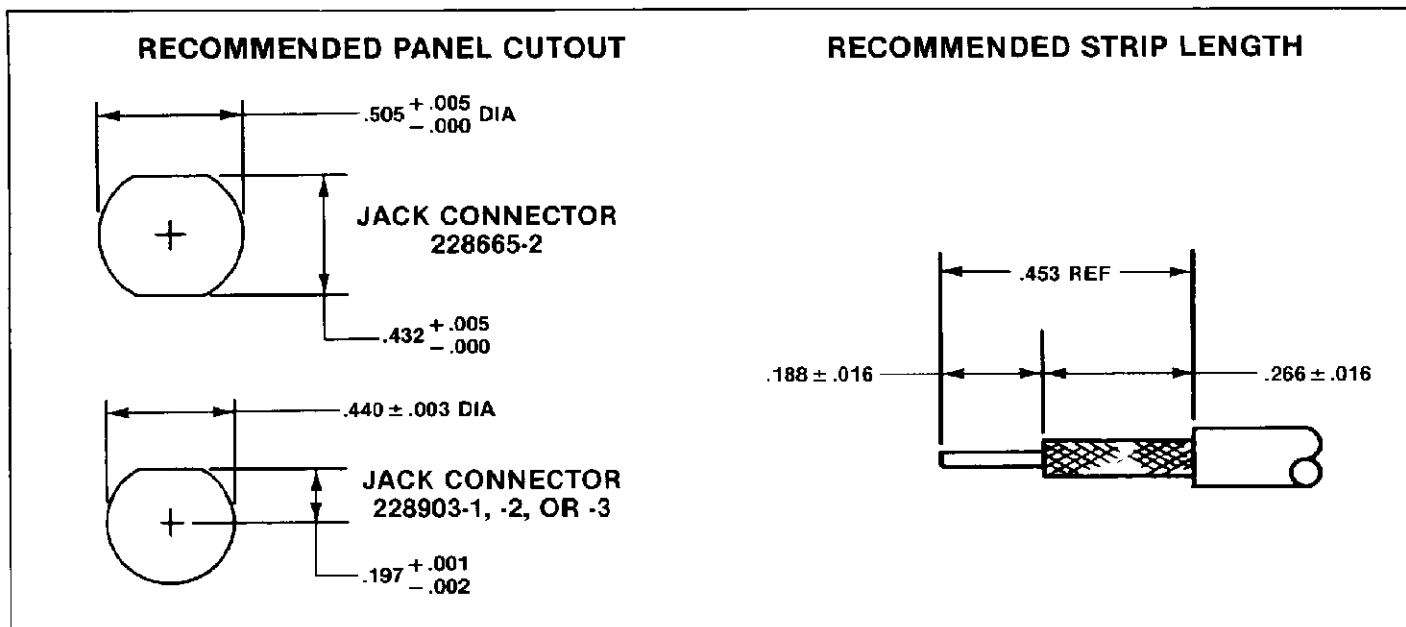


Fig. 2

Proceed as follows:

1. Slide ferrule onto cable, and strip cable in accordance with the dimensions shown in Figure 2.
2. If applicable, slide bushing onto cable dielectric as shown in Figure 3.
3. Select the tooling that is best suited for your production requirements from the chart in Figure 1, and crimp center contact in accordance with instructions packaged with the tooling.
4. Insert crimped center contact into bulkhead jack assembly with braid over support sleeve of jack assembly. See Figure 3.
5. Slide ferrule forward over braid and support sleeve.
6. Crimp ferrule in accordance with the instructions packaged with the tooling, as referenced in Figure 1.
7. Using the dimensions shown in Figure 2, make the panel cutout; then insert the bulkhead jack connector into the panel, and secure the connector with the lockwasher and jam nut.

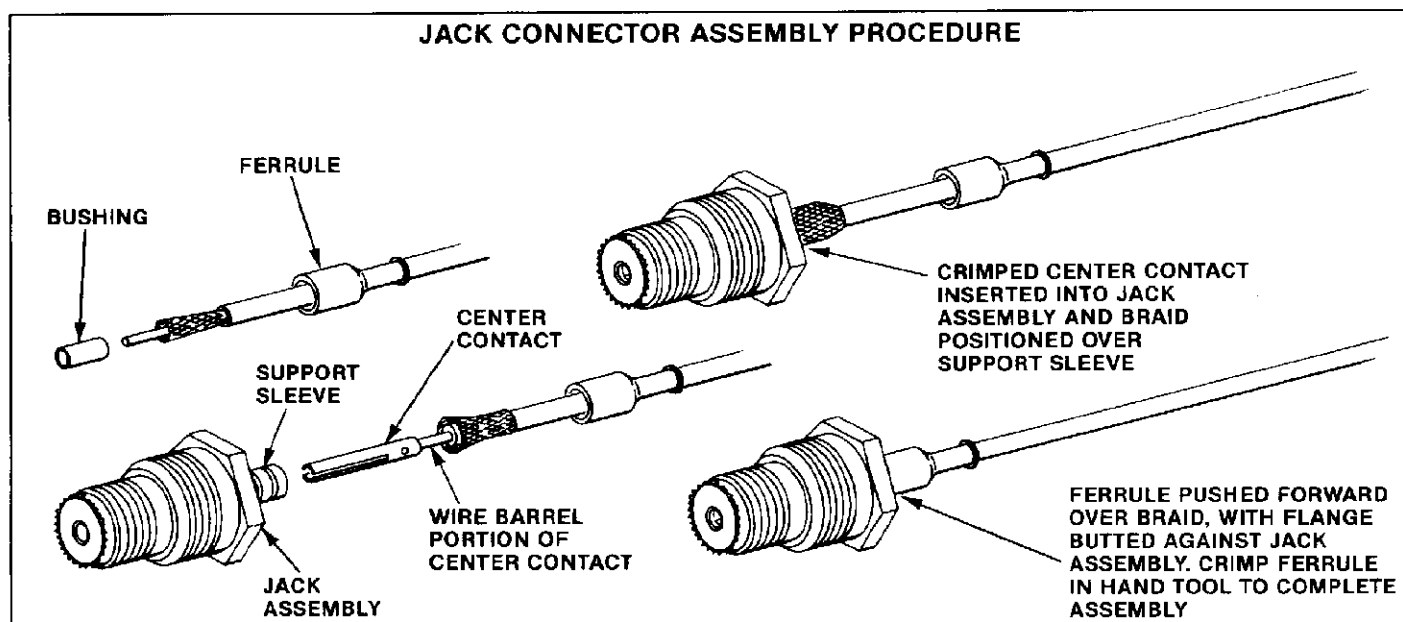


Fig. 3