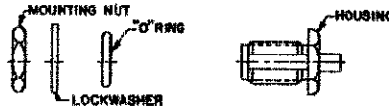


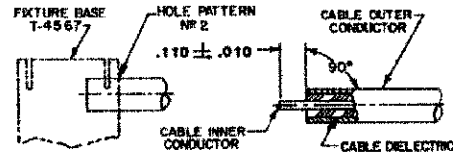
CONNECTOR TYPE	CABLE TYPE	TOOLS REQUIRED:
OSM BULKHEAD FEEDTHROUGH CABLE JACK DIRECT SOLDER ATTACHMENT	RG402/U .141 SEMI-RIGID COAXIAL CABLE	FIXTURE BASE: 2098-5206-54 (T-4567) CLAMP INSERT: 2098-5207-54 (T-4700-I) LOCATOR TOOL: 2098-5213-02 (T-948)

### CONNECTOR

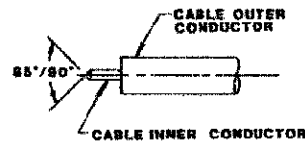


### ASSEMBLY OPERATIONS

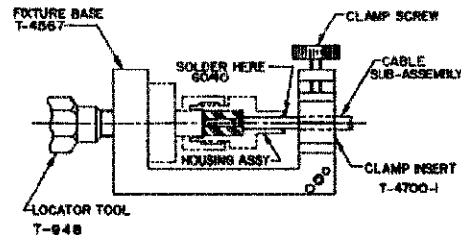
- 1.0 PREPARATION OF CABLE
  - 1.1 INSERT SQUARED CABLE END INTO FIXTURE BASE HOLE PATTERN #2.
  - 1.2 PLACE SAW IN SAW SLOT AND CUT THROUGH OUTER CONDUCTOR AND INTO DIELECTRIC WHILE ROTATING CABLE.
  - 1.3 REMOVE CABLE FROM FIXTURE AND FINISH CUTTING DIELECTRIC WITH CUTTING BLADE.
  - 1.4 BARE INNER CONDUCTOR BY PRYING CUT OUTER CONDUCTOR AND DIELECTRIC FROM CABLE.
  - 1.5 COMPLETE TRIMMING OF CABLE INNER CONDUCTOR TO DIMENSION SHOWN.



- 2.0 SHAPE INNER CONDUCTOR OF CABLE
  - 2.1 FILE BLUNT END OF INNER CONDUCTOR TO AN 85°-90° COWE.



- 3.0 SOLDERING OF CABLE TO HOUSING SUB-ASSEMBLY
  - 3.1 ASSEMBLE LOCATOR TOOL ONTO HOUSING SUB-ASSEMBLY.
  - 3.2 INSERT PREPARED CABLE END ONTO PRE-ASSEMBLED CENTER CONTACT OF HOUSING AND BOTTOM, FIRMLY.
  - 3.3 PLACE CONNECTOR ASSEMBLY INTO FIXTURE BASE AS SHOWN. (LOCATOR TOOL SHOULD REST ON FIXTURE BASE).
  - 3.4 MAINTAIN CABLE FIRMLY SEATED IN HOUSING SUB-ASSEMBLY AND TIGHTEN CLAMP SCREW.
  - 3.5 SOLDER WHERE SHOWN.



NOTE: FIXTURE BASE SHOULD BE CLAMPED VERTICALLY IN VISE TO KEEP LOCATOR TOOL SEATED AGAINST FIXTURE BASE.