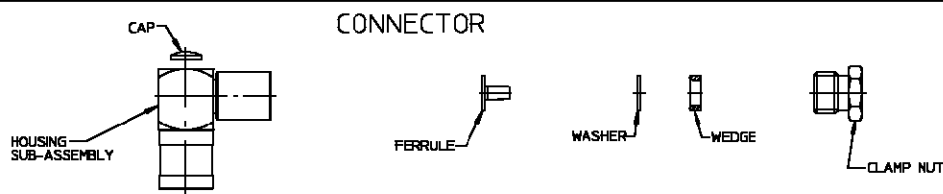
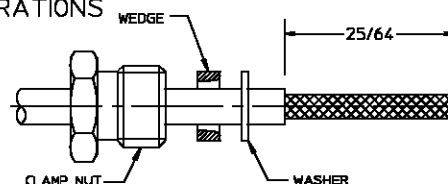


CONNECTOR TYPE	CABLE TYPE	TOOLS REQ'D
SMB RIGHT ANGLE CABLE PLUG CLAMP ATTACHMENT	FLEXIBLE CABLE RG-174/U RG-188 RG-316	TORQUE WRENCH: 2598-5243-54



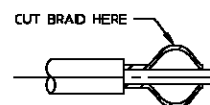
#### Step 1

- Cut cable jacket to dimension shown, being careful not to nick braid.
- Place nut (hex first), wedge (small opening first) and washer over cable.



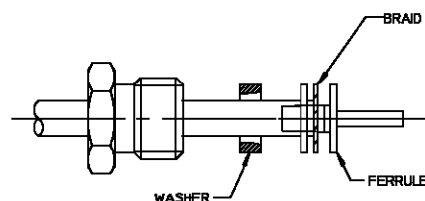
#### Step 2

- Push back braid to expand and facilitate cutting. Cut braid with small pointed scissors at point of widest expansion.



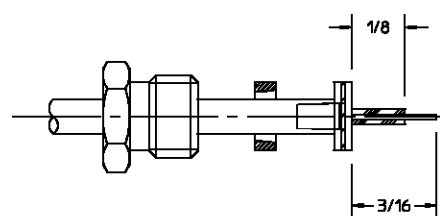
#### Step 3

- Flare out remaining braid.
- Then insert ferrule between the braid and cable dielectric until braid is wedged firmly between flange of ferrule and jacket.



#### Step 4

- Trim braid to diameter of flange.
- Trim cable dielectric to dimension shown.
- Tin center conductor.
- Trim center conductor to dimension shown.



#### Step 5

- Thread clamp nut into housing sub-assembly with center conductor feeding through right angle contact and torque to 7-10 inch-lbs.
- Solder center conductor to contact.
- Stake metal cap into place using .180 diameter flat bottom punch.

