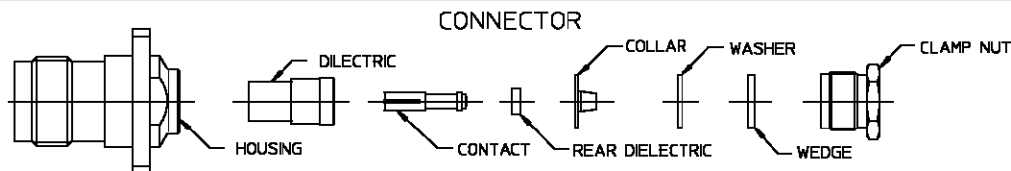


<b>CONNECTOR TYPE</b>  OST PANEL MOUNT CABLE JACK CLAMP ATTACHMENT	<b>CABLE TYPE</b>  RD-316/U	<b>TOOLS REQ'D:</b> CENTER CONTACT HOLDER: 2098-5279-10 (T-4580)
--	-----------------------------------	--



### ASSEMBLY OPERATIONS

<b>Step 1</b> (a) Cut cable outer jacket to dimension shown, 45° angle. (b) Place nut (hex first) and wedge (small opening first over jacket) and washer.	
<b>Step 2</b> (a) Push back braid to expand and facilitate cutting. Cut braid with small pointed scissors at point of widest expansion.	
<b>Step 3</b> (a) Cut slits in outer jacket, .062 long 3 places approx. 120 deg. apart, to facilitate installation of ferrule (optional). (b) Flare out remaining braid, and install ferrule (tapered end first) and seat firmly.	
<b>Step 4</b> (a) Slide washer, wedge and clamp nut toward collar, such as to clamp braid between the collar and washer. (b) Trim braid as close as possible with a small pair of scissors or flush cut wire cutter.	
<b>Step 5</b> (a) Cut cable dielectric flush with collar. (b) Cut cable inner conductor to dimension shown.	
<b>Step 6</b> (a) Slide rear dielectric over cable inner conductor.	
<b>Step 7</b> (a) Place center contact in holder, heat center contact and push it over cable inner conductor and into rear dielectric firmly. (b) Remove excess solder.	
<b>Step 8</b> (a) Assemble front dielectric onto center contact. (b) Engage threads of clamp assembly to housing and torque to 12-15 in lbs. (c) Assembly is now complete.	
<b>Step 9</b> (a) Adherence to steps given will yield tolerances shown.	