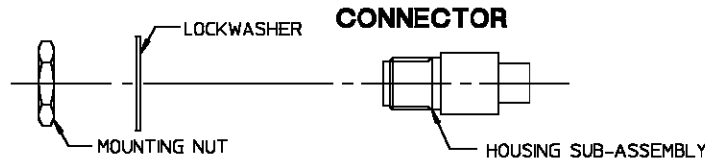
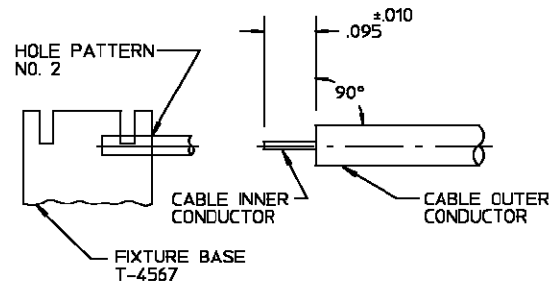


CONNECTOR TYPE	CABLE TYPE	TOOLS REQUIRED:
OSP FLOATING PANEL FEEDTHRU CABLE JACK DIRECT-SOLDER ATTACH	RG-405/U .085 SEMI-RIGID COAX CABLE	FIXTURE BASE: 2098-5206-54 (T-4567) CLAMP INSERT: 2098-5208-54 (T-4700-2) LOCATOR TOOL: 4598-5004-02

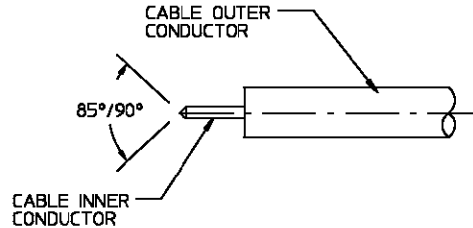


ASSEMBLY OPERATIONS

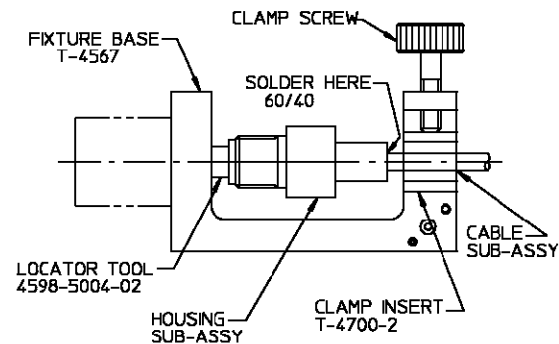
- 1.0 PREPARATION OF CABLE.
 - 1.1 INSERT SQUARED CABLE END INTO FIXTURE BASE HOLE PATTERN #2.
 - 1.2 PLACE SAW IN SAW SLOT AND CUT THROUGH OUTER CONDUCTOR AND INTO DIELECTRIC WHILE ROTATING CABLE.
 - 1.3 REMOVE CABLE FROM FIXTURE AND FINISH CUTTING DIELECTRIC WITH CUTTING BLADE.
 - 1.4 BARE INNER CONDUCTOR BY PRYING CUT OUTER CONDUCTOR AND DIELECTRIC FROM CABLE.
 - 1.5 TRIM CABLE INNER CONDUCTOR TO LENGTH.



- 2.0 SHAPE INNER CONDUCTOR OF CABLE
 - 2.1 FILE BLUNT END OF INNER CONDUCTOR TO AN 85° - 90° CONE.



- 3.0 SOLDERING OF CABLE SUB-ASSEMBLY TO HOUSING SUB-ASSEMBLY.
 - 3.1 CAREFULLY INSERT CABLE INNER CONDUCTOR INTO PRE-ASSEMBLED CENTER CONTACT OF HOUSING SUB-ASSEMBLY
 - 3.2 PLACE LOOSE ASSEMBLY IN FIXTURE BASE AS SHOWN.
 - 3.2.1 TIGHTEN CLAMP SCREW TO SECURE CABLE.
 - 3.2.2 TIGHTEN LOCATOR TOOL TO SEAT HOUSING SUB-ASSEMBLY FIRMLY.
 - 3.3 MAINTAIN POSITION OF HOUSING FIRMLY AGAINST LOCATOR TOOL AND SOLDER.



NOTE: FIXTURE SHOULD BE CLAMPED VERTICALLY IN VISE (SO THAT CONNECTOR INTERFACE IS FACING DOWN) TO KEEP HOUSING SEATED AGAINST LOCATOR TOOL.