

Figure 1

1. INTRODUCTION

HIDEAWAY Mixed Media Outlet Kits 1479815-[] (6 ports) and 1479946-[] (4 ports) (dash number indicates color). The 4-port outlet kit accepts 4 shielded or unshielded SL Series modular jacks, SL Series multimedia inserts, or dual fiber optic connectors; and the 6-port outlet kit accepts 6 unshielded SL Series modular jacks, SL Series multimedia inserts, or dual fiber optic connectors.

NOTE



Dimensions in this instruction sheet are in metric units [with U.S. customary units in brackets]. Figures are not drawn to scale.

The outlet will fit a single- or double-gang wall box or 102 × 102-mm [4 × 4-in.] double-gang wall box having a minimum depth of 38.1 mm [1.50 in.].

NOTE



A double-gang wall box is recommended for new installations in order to achieve the maximum radius when dressing the cable.

Reasons for reissue of this instruction sheet are provided in Section 4, REVISION SUMMARY.

2. DESCRIPTION (See Figure 1)

Each outlet kit consists of a base, cover, mounting screws, and label and label cover.

The base features ports that accept the jacks, inserts, or connectors, openings for cable entrance, and fiber

optic storage tabs (for 1-m [3.3-ft.] maximum cable length) that meets minimum bend radius criteria. The cover features a label holder and slots for identification icons.

3. INSTALLATION PROCEDURE

3.1. Modular Jack and SL Series Multimedia Insert

1. Terminate the modular jacks or multimedia inserts to the cable according to the instructions packaged with the modular jack or multimedia insert.
2. Refer to Figure 2, and install each modular jack or multimedia insert as follows:

For a 4-port application, refer to Figure 2 for recommended order of installation.

 - a. Align the modular jack or multimedia insert with the back of the base so that the deflection latch is facing the bottom of the base.
 - b. Insert the modular jack or multimedia insert into the port at a slight angle, then pivot it toward the port until the deflection latch engages the off-set rail and snaps into place.

3.2. Fiber Optic Connector

1. Pull the fiber(s) (up to 1 m [3.3 ft]) through the oval openings in the base, and terminate the fiber optic connectors according to instructions packaged with the fiber optic connector.

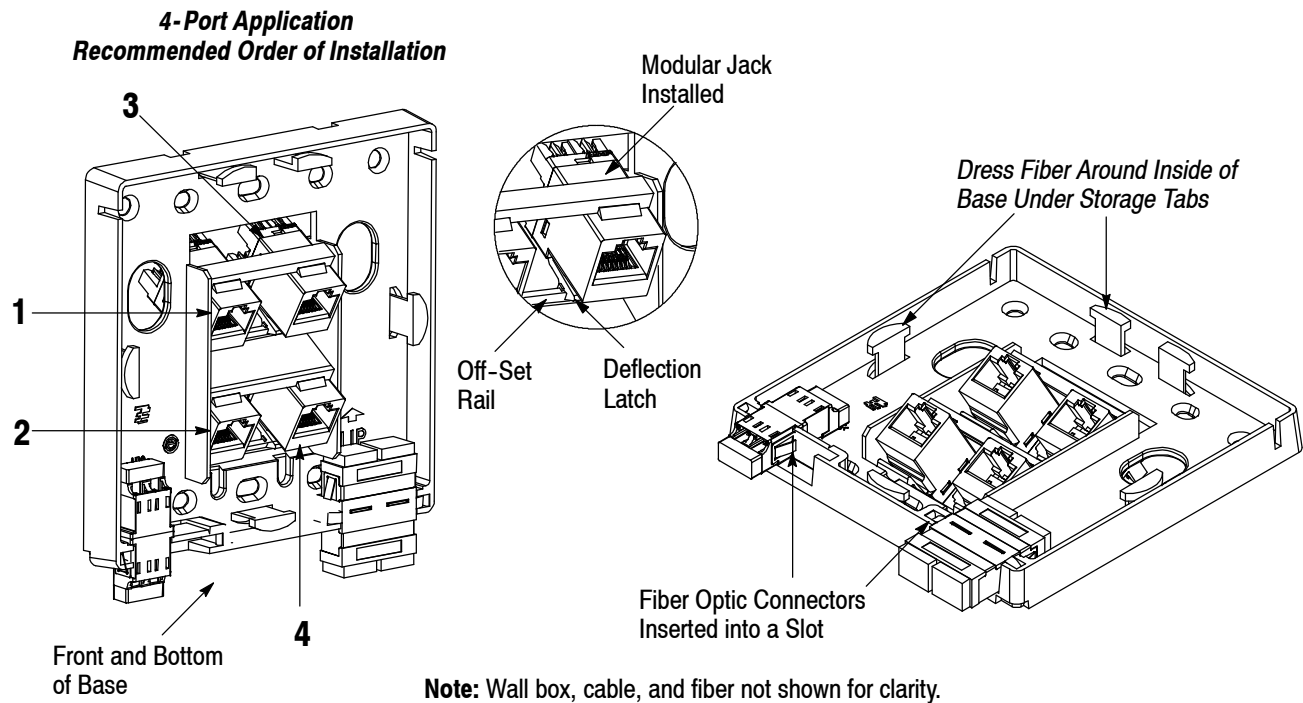


Figure 2

2. Dress the fiber around the inside of the base under the storage tabs. See Figure 2.
3. For simplex fiber optic couplers and duplex LC fiber optic couplers, apply force to the break-away tab (as indicated in Figure 3) until it breaks off at the notch of the tab.
4. Insert each fiber optic connector into a slot at the bottom of the base. See Figure 2.

Simplex and Duplex LC Fiber Optic Couplers

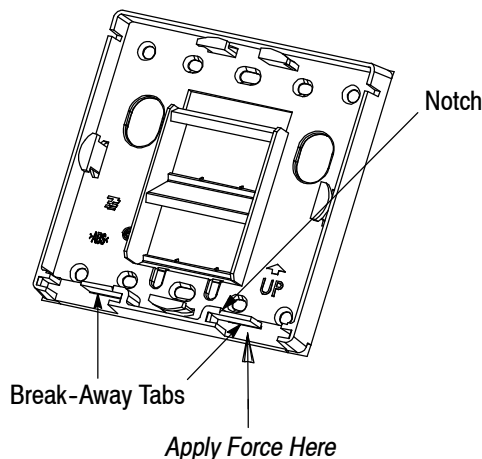


Figure 3

3.3. Base Installation

Orient the base according to the arrow marked on the base (refer to Figure 1), and mount the base with connectivity to the box using the screws.

3.4. Cover Installation (Refer to Figure 1)

1. Slide the cover upward to hook the lower edge under the lower edge of the base, and then rotate the cover upward to latch the top edge over the base.

NOTE



The cover may be removed by inserting (and twisting) the tip of a flat blade screwdriver into the cover removal slots at the rear of the top of the cover.

2. Mark the label to identify the system. Install the label and label cover into the label holder of the cover.
3. Insert the port identification icons into the slots above the ports.

4. REVISION SUMMARY

Revisions to this instruction sheet include:

- Updated instruction sheet to corporate requirements
- Replaced outlet kit part numbers
- Changed Figures 1 and 2, and added Figure 3
- Changed Sections 1, 2, and 3