



POLARIZING KEY FOR AMP PACE[★] AND ECONOMATE[★] I STANDARD PROFILE PRINTED CIRCUIT BOARD CONNECTORS

IS 2956	
RELEASED	10-31-80
REVISED	

1. INTRODUCTION

Polarizing keys are used with AMP PACE and ECONOMATE I printed circuit board (pcb) connectors as a keying feature for mating the pcb and the connector and to provide polarization.

As shown in Figure 1, these keys fit between contacts in the standard profile connector housings. Because they fit between connector contacts, they do not reduce connector contact capacity.

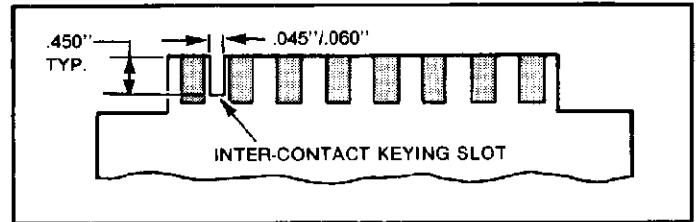


Figure 2

3. POLARIZING KEY INSTALLATION AND REMOVAL

CAUTION

When polarizing key must be inserted or removed from loaded connector be very careful not to damage adjacent contacts.

- (a) Insert polarizing key into connector. Non-serrated tweezers or small needlenose pliers may be used for insertion and extraction. Refer to Figure 3.
- (b) Polarizing key must be centered, and bottomed in contact insulating barrier.
- (c) To remove key, pull it from the connector using non-serrated tweezers or small needlenose pliers. Refer to Figure 3.

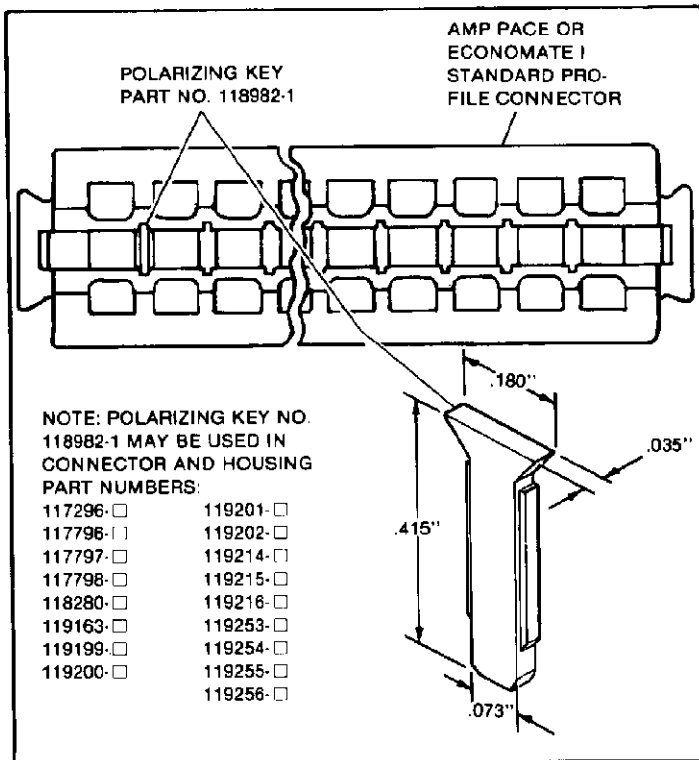


Figure 1

2. BOARD PREPARATION

NOTE: Printed circuit board design must meet requirements of MIL-C-21097 and MIL-STD-275.

- (a) Select desired slot location.
- (b) Cut slot to correct dimensions, as shown in Figure 2.

NOTE: Slot must be centered between adjacent circuit paths (pcb contacts).

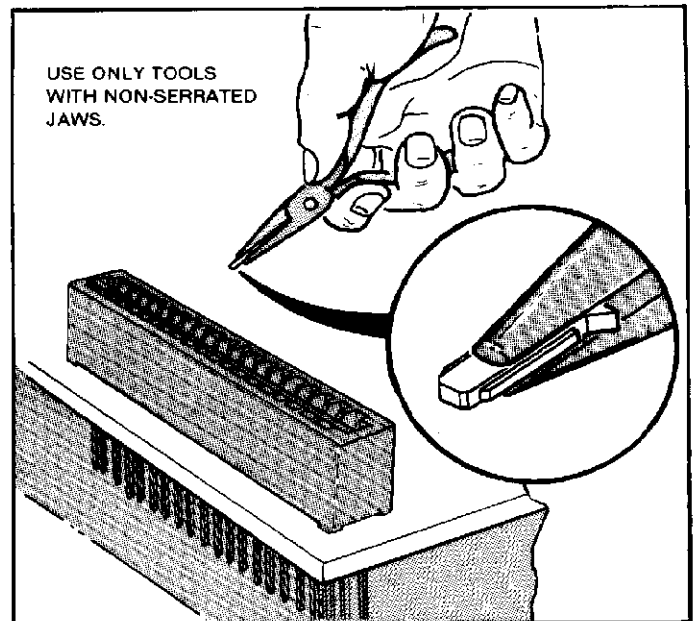


Figure 3

Copyright 1980 by AMP Incorporated, Harrisburg, Pa. All International Rights Reserved. AMP Incorporated products covered by U.S. and Foreign Patents and/or Patents Pending.