



AMERICAN PAMCOR, INC.  
VALLEY FORGE, PA.  
A SUBSIDIARY OF AMP INC.

A-MP\* IGNITION TERMINAL  
P/N 332416  
AND CABLE SUPPORT  
P/N 50639-1

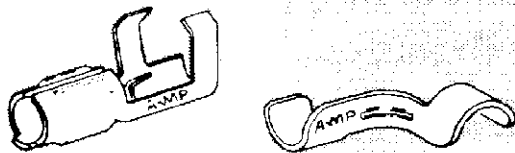
IS 2170

RELEASED	3-17-67
REVISED	3-23-67

## 1. INTRODUCTION

The A-MP Ignition Terminal P/N 332416 shown in Figure 1 is crimped on the end of 7 mm Ignition Cable having either Metallic or Non-Metallic Conductors. The A-MP SUPER CHAMP\* Hand Tool † is used to crimp the Ignition Terminal on the Cable. These Terminals are used on Ignition Distributors, Coils and Spark Plugs. The Cable Support P/N 50639-1, also shown in Figure 1, may be quickly and conveniently attached to the Cable next to the Ignition Terminal for right angle application.

These Terminals and Cable Supports may be used in a wide variety of Ignition Systems. When properly installed, they will provide a reliable and secure electrical connection.



IGNITION TERMINAL      CABLE SUPPORT

FIG. 1

## 2. IGNITION TERMINAL INSTALLATION

- Select the Ignition Cable to be used and cut end square. See Figure 2.
- If a Protective Boot is to be used, it should be installed over the Cable as shown in Figure 2.

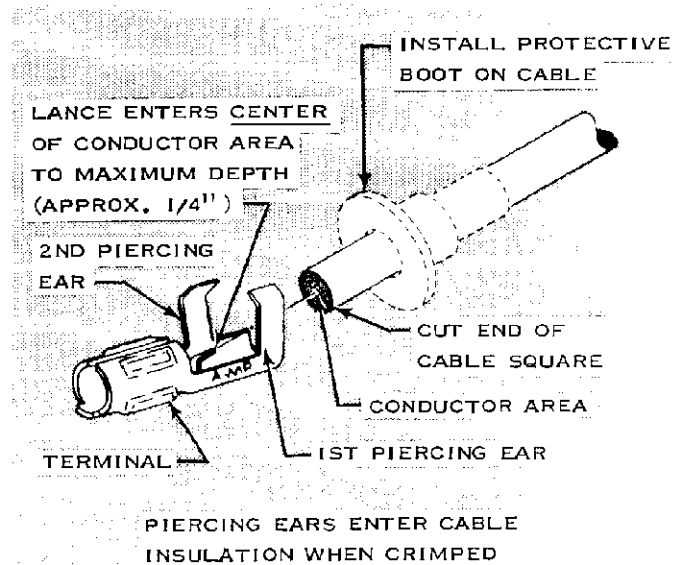


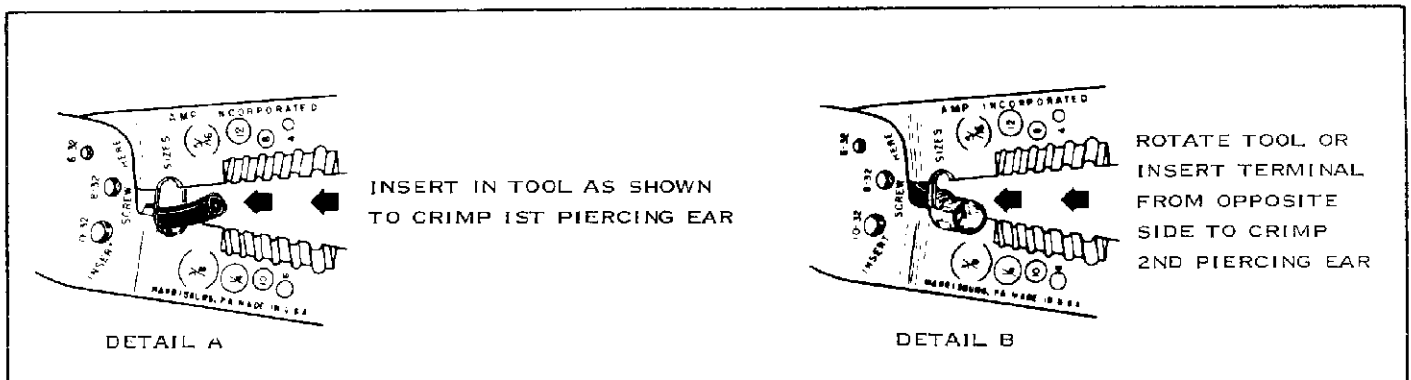
FIG. 2

- Hold Cable firmly on an angle in-line with Lance of Terminal as shown in Figure 2. Insert Ignition Terminal over Cable so Lance enters into CENTER Conductor Area of the Cable.

NOTE: Make certain Terminal Lance enters the Conductor of the Cable to the maximum depth (approximately 1/4") to provide positive electrical contact.

- Use the A-MP SUPER CHAMP Hand Tool † and Insert Terminal in Tool as shown in Figure 3, Detail A.
- Close Tool Handles completely to crimp First Piercing Ear.
- Rotate Tool or insert Terminal from opposite side. See Figure 3, Detail B. Close Tool Handles completely to crimp Second Piercing Ear.
- The completed Crimped Terminal is shown in Figure 4, Detail A.

© 1967 by AMP Incorporated. All international rights reserved. A-MP and products covered by U.S. and foreign patents and/or patents pending.



† USE 7MM CRIMP NOTCH IN TOOL NO. 29400 OR 45165-1.

FIG. 3

\* TRADEMARK OF AMP INCORPORATED

### 3. CABLE SUPPORT INSTALLATION

The Cable Support is used on Ignition Cables for right angle applications. The Support may be installed on the Cable above the Ignition Terminal or with one end of the Support clamped around the Terminal. See Figure 4, Detail B.

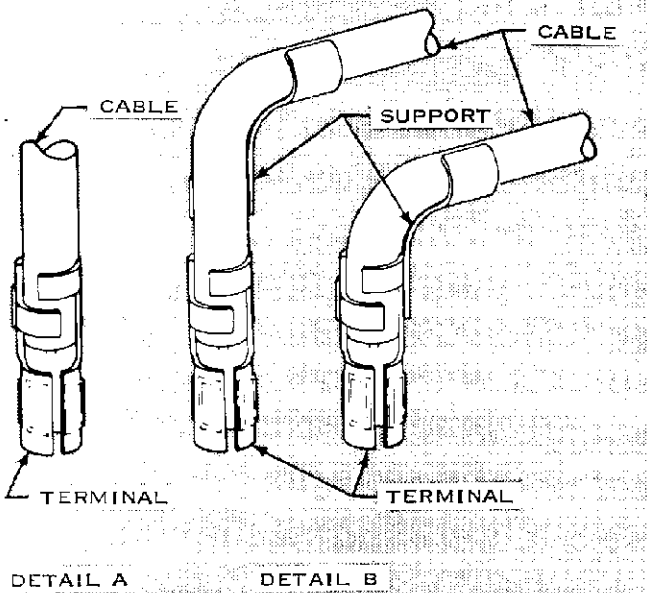


FIG. 4