



AMP INCORPORATED
HARRISBURG, PENNA.

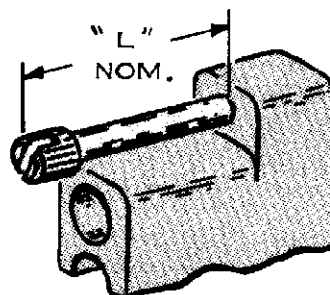
A-MP TURNABLE JACK SCREW
SPECIFICATIONS AND ASSEMBLY
INSTRUCTIONS

IS 1876

RELEASED 3-13-64

REVISED

TURNABLE JACK SCREW LENGTH	
202201-□ LONG	202200-□ LONG
200868-□ SHORT	200870-□ SHORT
200871-□ LONG	200867-□ LONG
201388-□ SHORT-SHORT	201389-□ SHORT-SHORT
201565-□ LONG	201566-□ LONG
201911-□ EXTRA LONG	201910-□ EXTRA LONG
330577 SPECIAL SHORT	330578 SPECIAL SHORT
330581-□ SHORT-SHORT	330582-□ SHORT-SHORT



JACK SCREW LENGTH	"L" NOM.
SHORT-SHORT	9/16
SPECIAL SHORT	1-5/32
SHORT	1-7/64
LONG	1-45/64
EXTRA LONG	2-45/64

MATERIAL & FINISH SPECIFICATIONS - TURNABLE JACK SCREWS			
PART NO.	MALE (M) FEMALE (F)	DESCRIPTION	
		BODY	(M) TIP (F)
200867-1	F	CP - BRASS	SS - PASSIVATED
200867-2	F	CP - BRASS	CP - COLD ROLLED STEEL
200868-1	M	CP - BRASS	SS - PASSIVATED
200868-2	M	CP - BRASS	CP - COLD ROLLED STEEL
200868-4	M	CP - BRASS	SS - PASSIVATED
200870-1	F	CP - BRASS	SS - PASSIVATED
200870-2	F	CP - BRASS	CP - COLD ROLLED STEEL
200870-3	F	CP - BRASS	SS - PASSIVATED
200871-1	M	CP - BRASS	SS - PASSIVATED
200871-2	M	CP - BRASS	CP - COLD ROLLED STEEL
201388-1*	M	SS - PASSIVATED †	SS - PASSIVATED
201388-2*	M	SS - PASSIVATED †	CP - COLD ROLLED STEEL
201389-1*	F	SS - PASSIVATED †	SS - PASSIVATED
201389-2*	F	SS - PASSIVATED †	CP - COLD ROLLED STEEL
201565-1	F	CP - BRASS	SS - PASSIVATED
201566-1	M	CP - BRASS	SS - PASSIVATED
201910-1	F	CP - BRASS	SS - PASSIVATED
201910-2	F	CP - BRASS	CP - COLD ROLLED STEEL
201910-3*	F	CP - BRASS	SS - PASSIVATED
201910-4*	F	CP - BRASS	CP - COLD ROLLED STEEL
201911-1	M	CP - BRASS	SS - PASSIVATED
201911-2	M	CP - BRASS	CP - COLD ROLLED STEEL
201911-3*	M	CP - BRASS	SS - PASSIVATED
201911-4*	M	CP - BRASS	CP - COLD ROLLED STEEL
202200-1	F	CP - BRASS	SS - PASSIVATED
202201-1	M	CP - BRASS	SS - PASSIVATED
330577●	M	CP - BRASS	SS - PASSIVATED
330578●	F	CP - BRASS	SS - PASSIVATED
330581	M	SS - PASSIVATED ‡	SS - PASSIVATED
330582	F	SS - PASSIVATED ‡	SS - PASSIVATED

*USED FOR ONE 20 GA. METAL THICKNESS (STRAIN RELIEF CLAMP, PIN HOOD, CABLE CLAMP, ETC.)

†HEX TYPE JACK SCREW

●SPECIAL SHORT

CP - CADMIUM PLATED

‡SPECIAL HEX HEAD

SS - STAINLESS STEEL

© Copyright 1964 by AMP Incorporated. All international rights reserved. A-MP™ U. S. A. and foreign. A-MP™ products covered by U. S. and foreign patents and/or patents pending.

FIG. 1

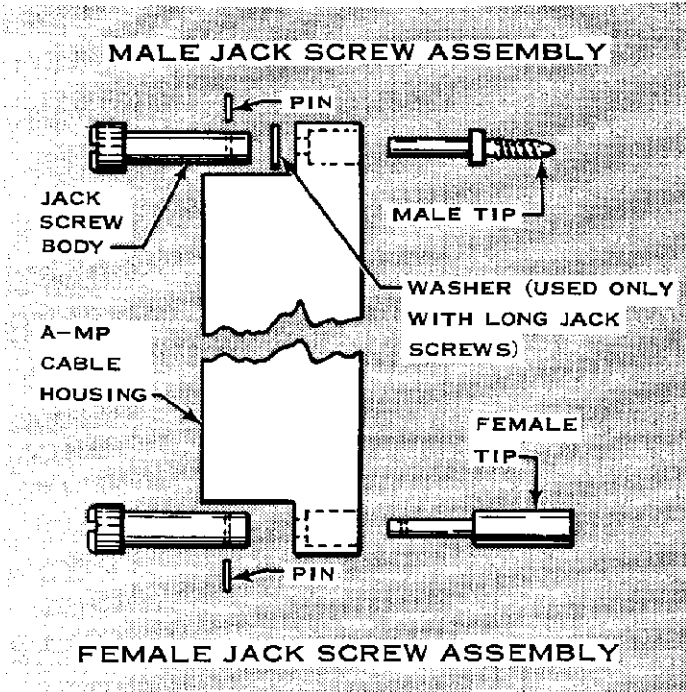


FIG. 2

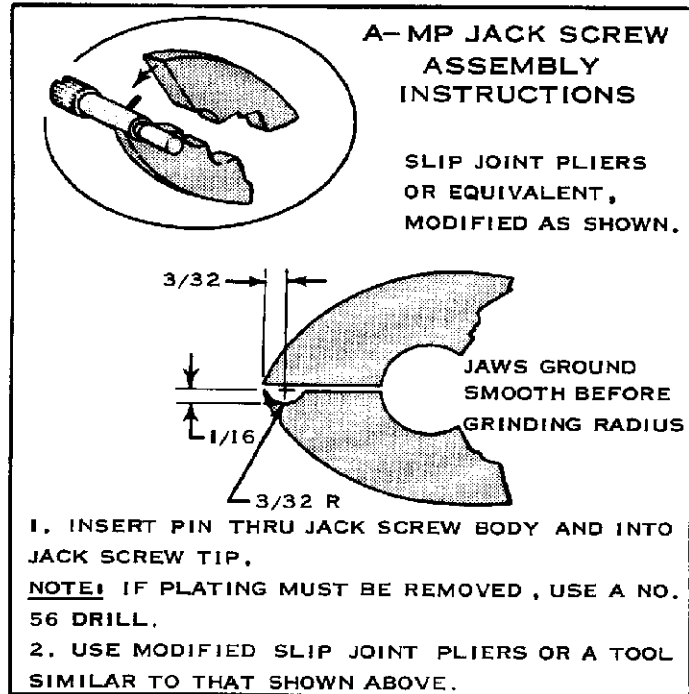


FIG. 3