

ANCHORING CLAMP

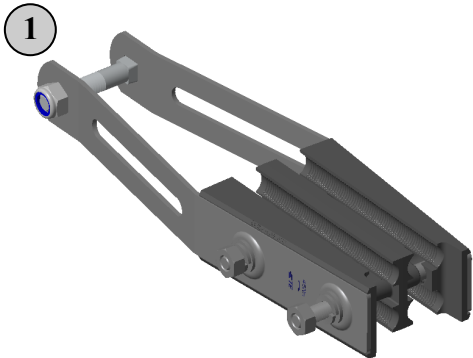
PA4x50-95(120) FA

PA4x50-95(120) MA

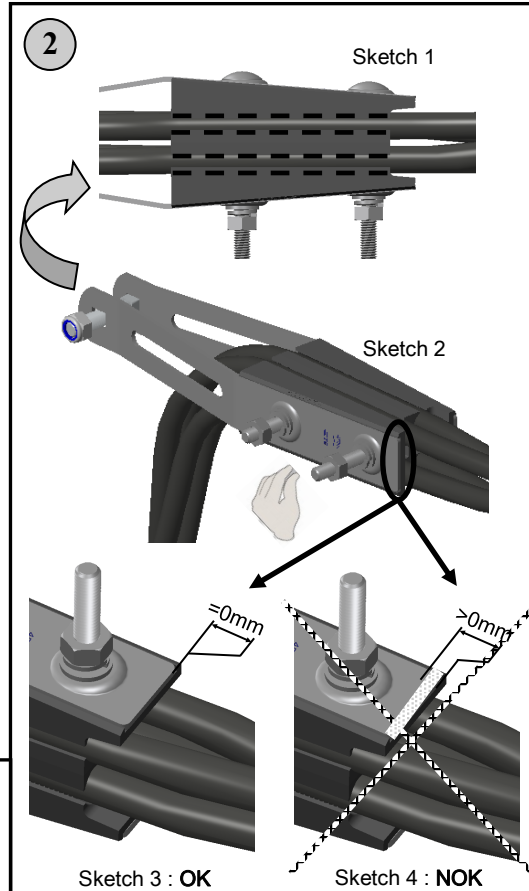
(cross section 2-4x50mm² to 2-4x95mm²)

HEL-5506

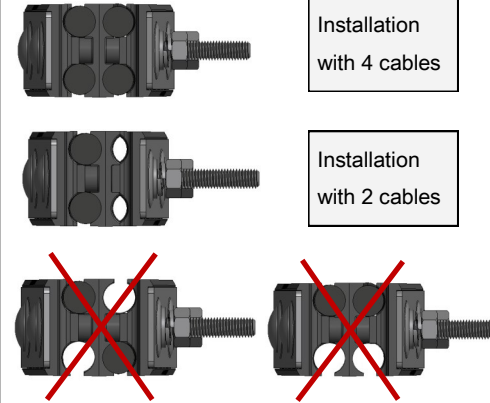
(cross section 2-4x25mm² to 2-4x50mm²)



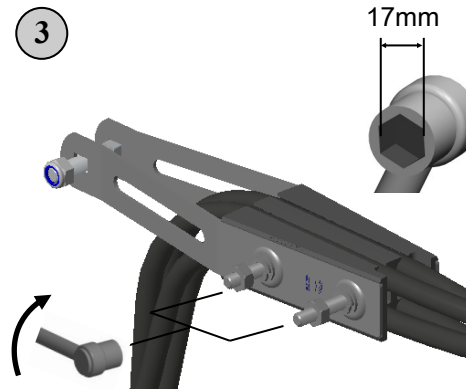
- ⇒ Release the nuts to fully open the clamp
- ⇒ A spring help to maintain the wedges opened



- ⇒ Place the cables into the wedges
- ⇒ Make sure each conductor is correctly aligned into the grooves (*sketch 1*)
- ⇒ Make sure that cable will pass properly between the arms (*sketch 2*)
- ⇒ Hand-tighten both nuts alternatively after having checked that wedges are positioned according to *sketch 3*



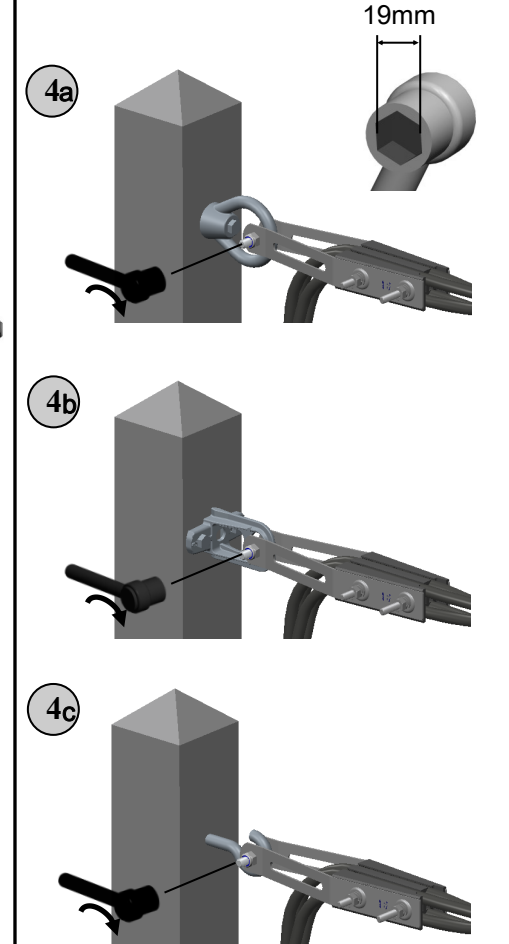
Wrench hexagonal dimension :



Tightening torque for each nut = 45Nm ±10%

- ⇒ Tighten bolts alternatively with an appropriate torque wrench until reaching a torque of 45Nm±10%

Installation Instructions



- ⇒ Install the clamp close to the pole anchoring ring point : eye nut (4a) or a hook (4c)
- ⇒ Fix the clamp arms to the anchoring point using the axis
- ⇒ Tighten the nut with appropriate wrench (5Nm±10% recommended)

La responsabilité de Tyco Electronics Simel ne peut être engagée si ces instructions de montage ne sont pas respectées

Tyco Electronics SIMEL cannot be held responsible if these assembly instructions are not respected