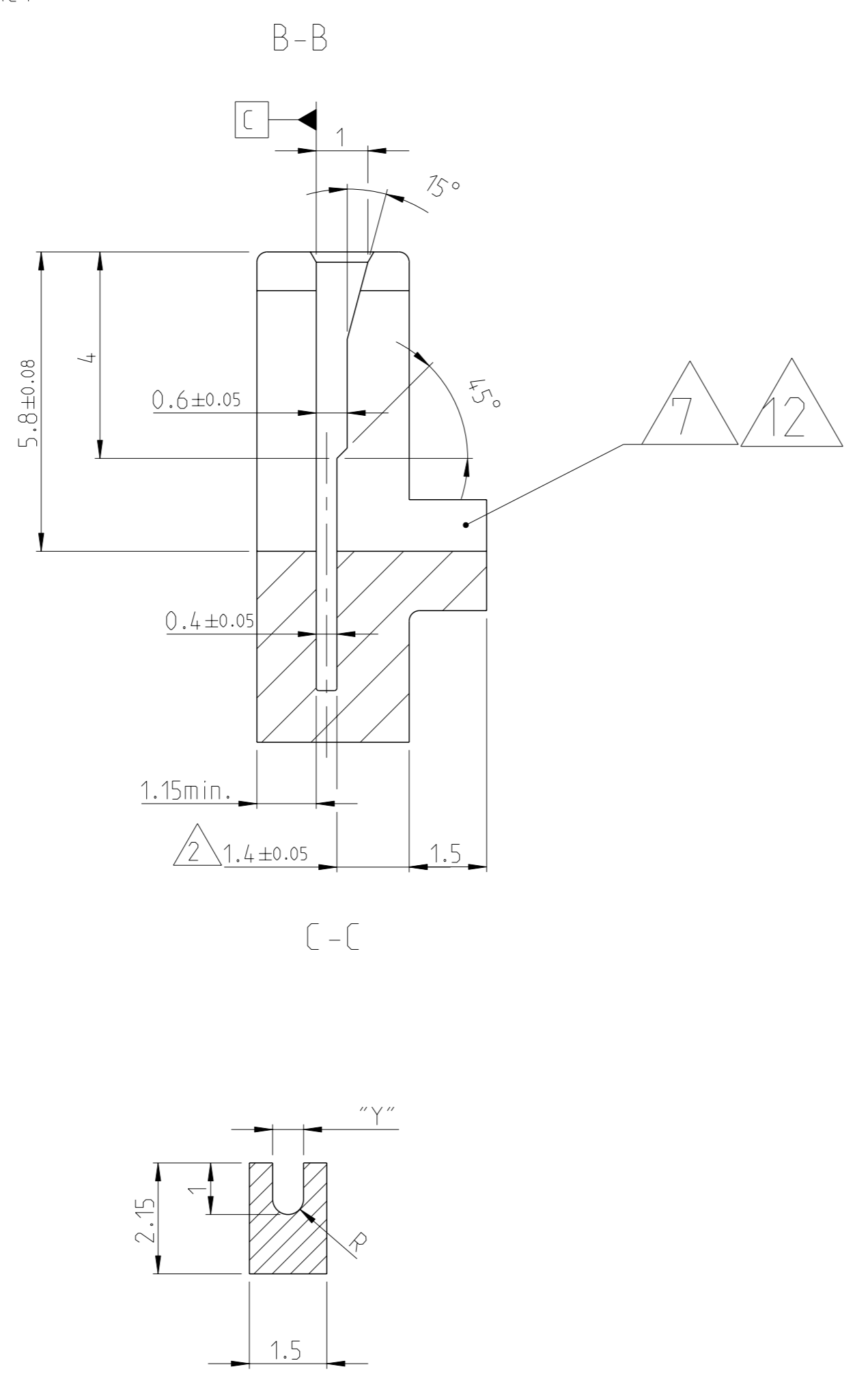
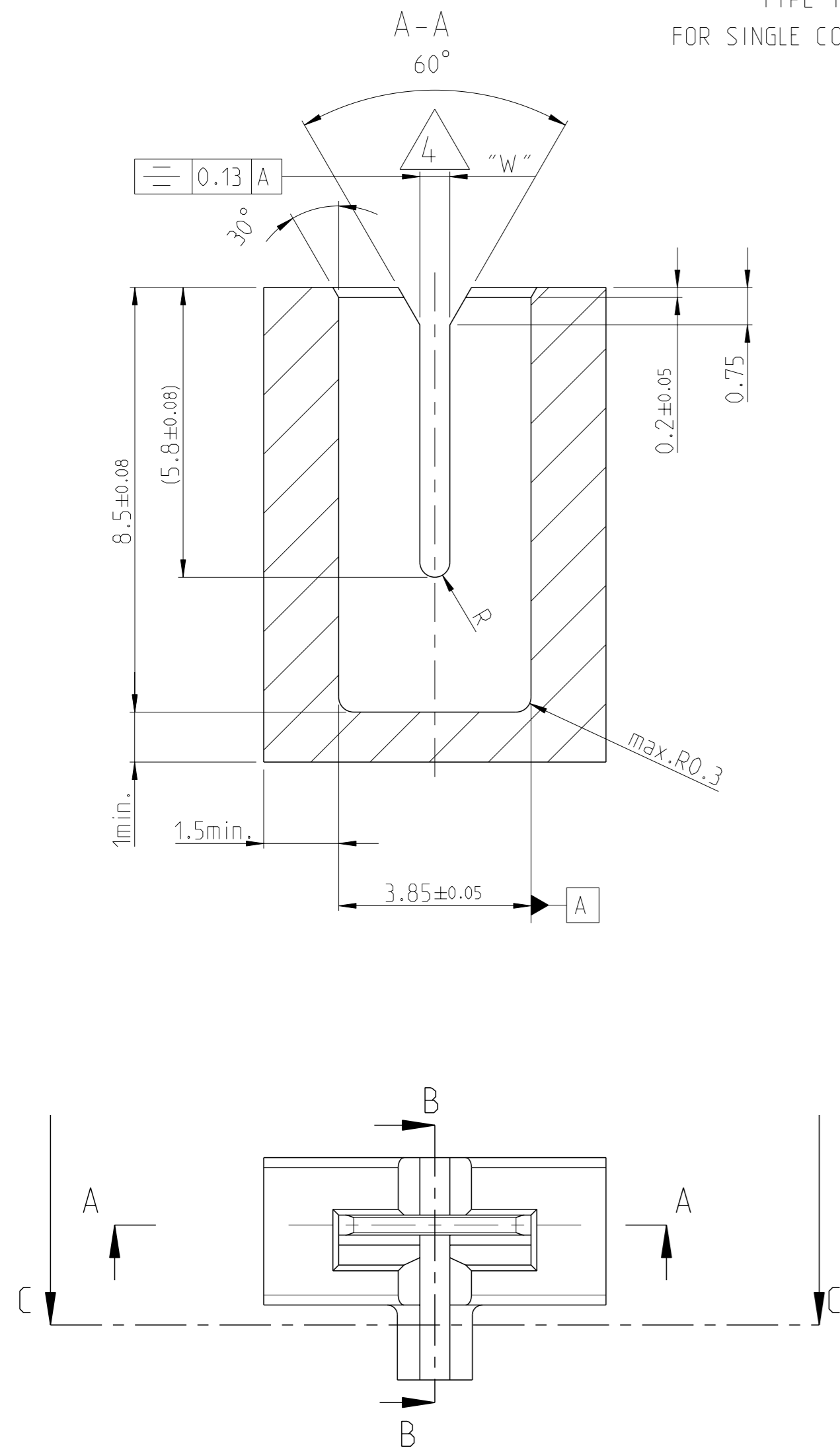
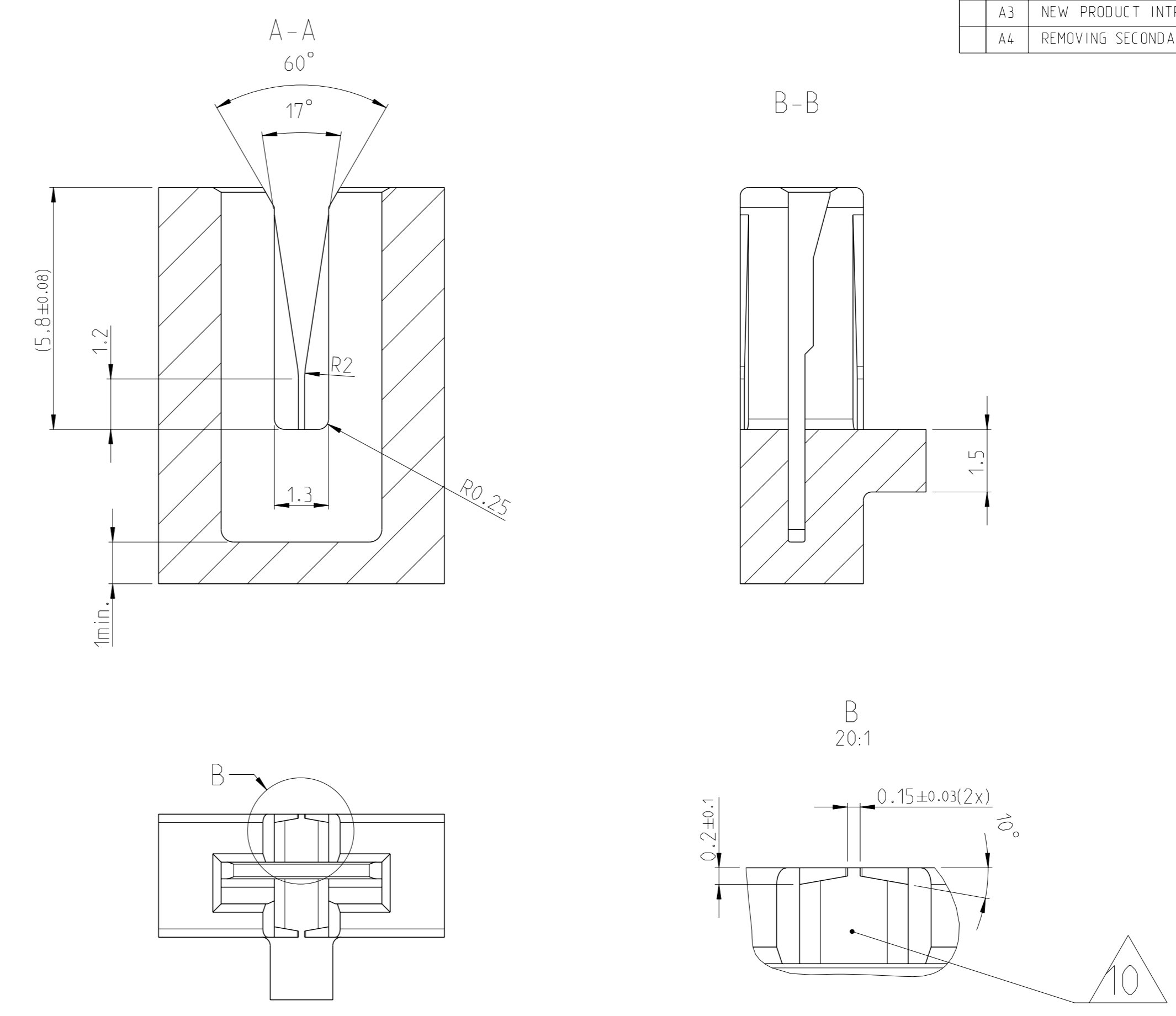


TYPE 1
FOR SINGLE CONTACT

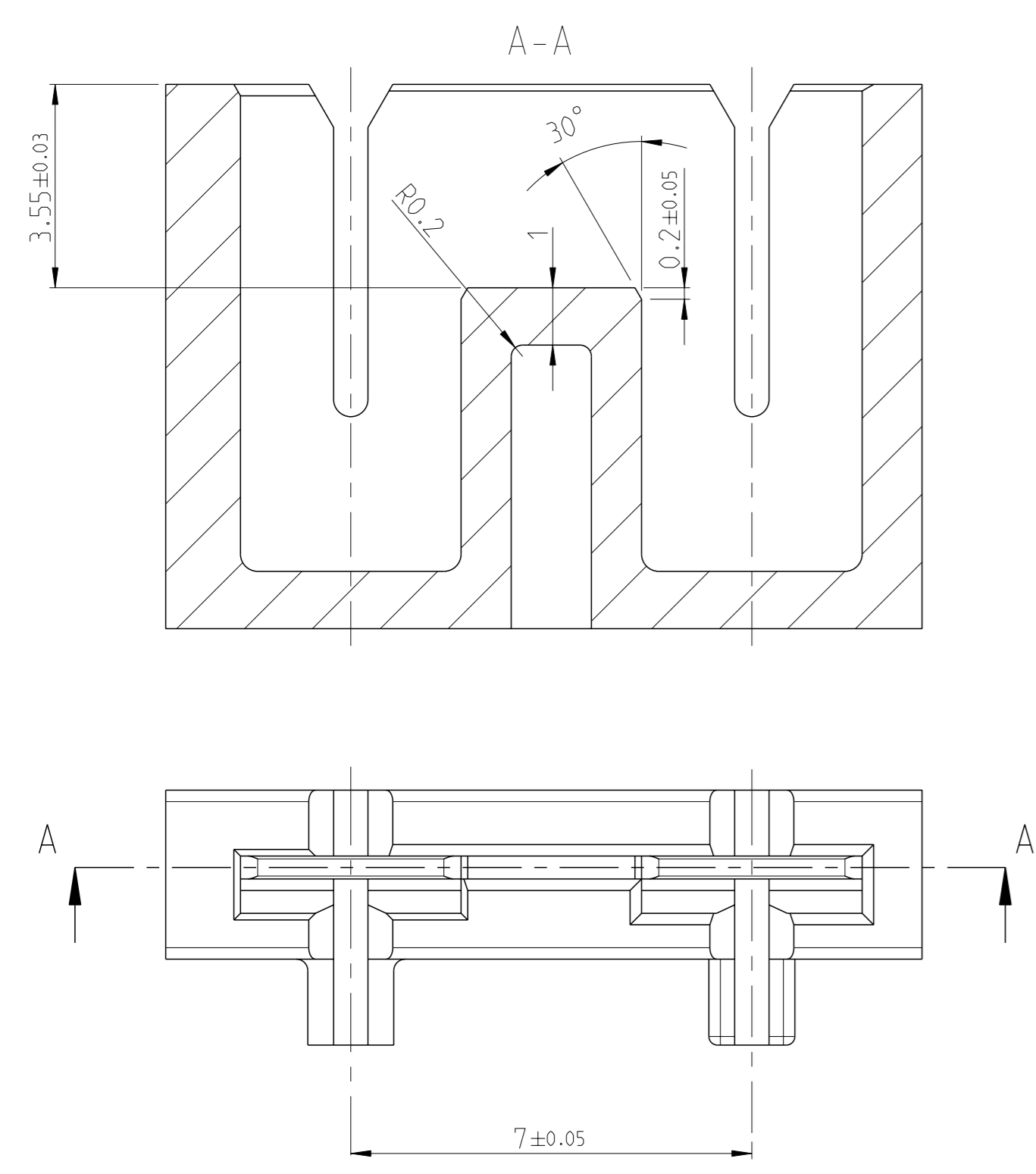


TYPE 4
WITH RESTRICTED WIRE GUIDS

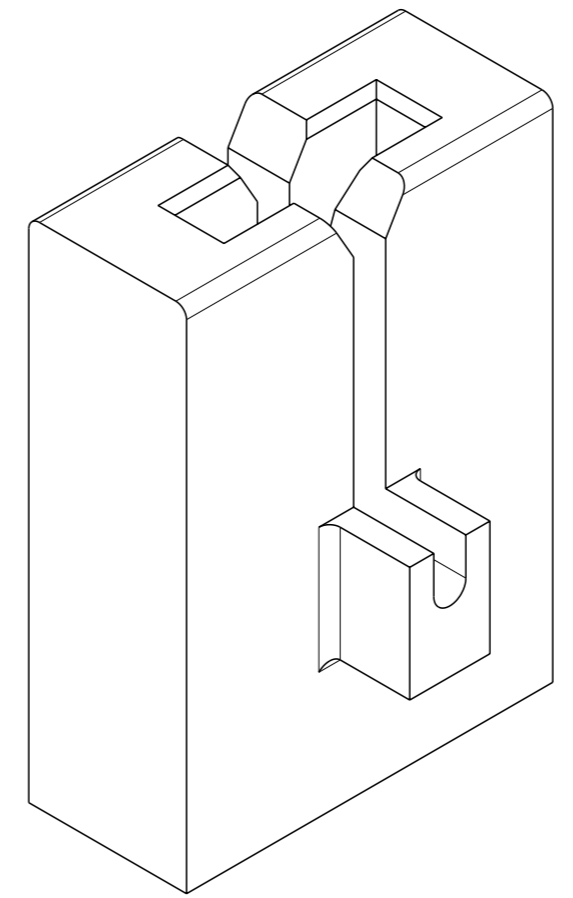
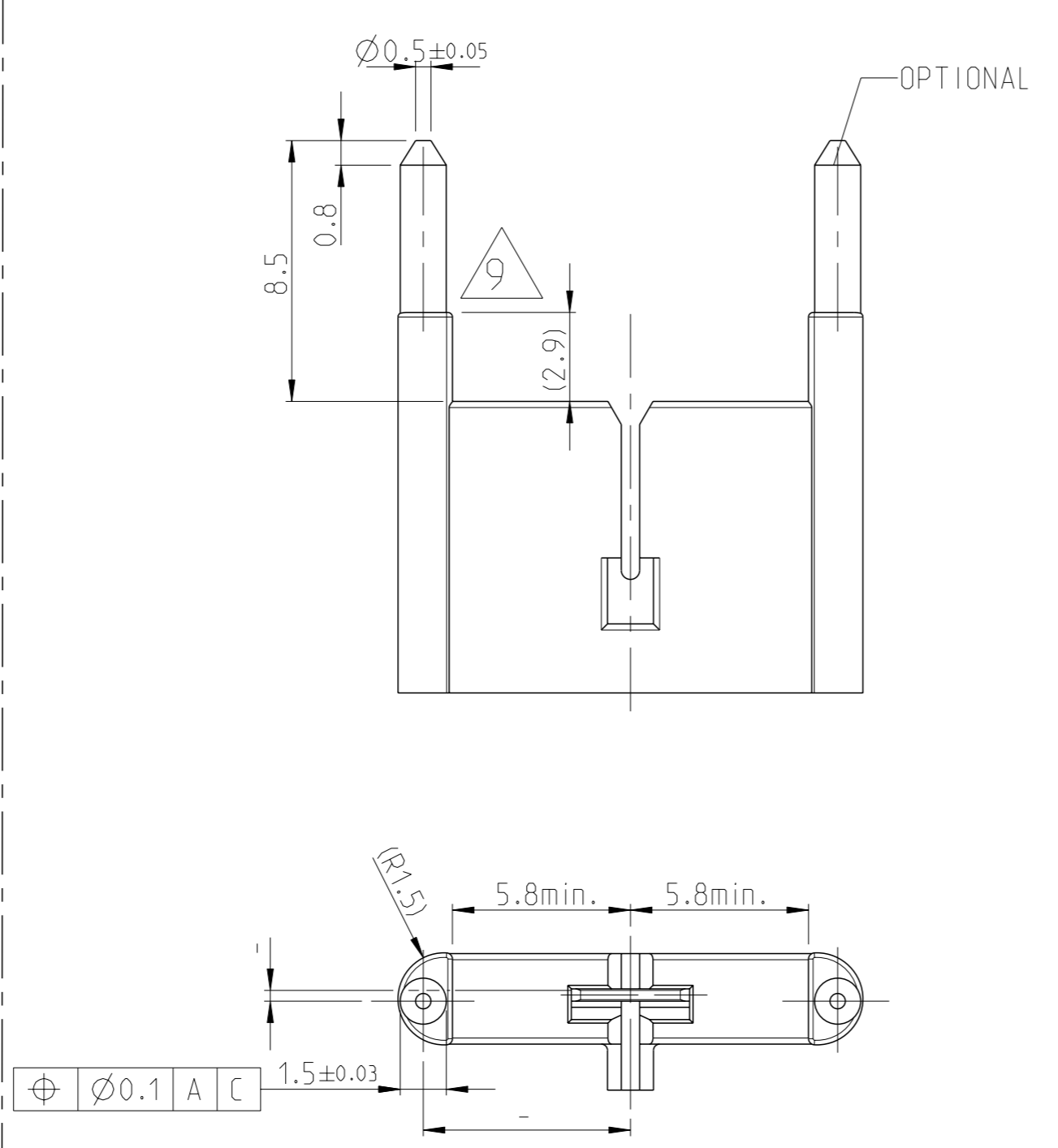


LOC	DIST	REVISIONS				
		REV	DESCRIPTION	DATE	OWN	APVD
A1	-	A1	NEW DRAWING	23JAN2013	Ba.	B.S
		A2	position tolerance added	16OCT2013	W.H	W.H
		A3	NEW PRODUCT INTRODUCTION FOR 0.5 THK.	11JUN2019	BDA	JH
		A4	REMOVING SECONDARY TERMINAL THICKNESS	02JUL2019	BDA	SV

TYPE 2
FOR CONTACT BRIDGE



TYPE 3
FOR SINGLE CONTACT WITH PCB STOP



1.12	1.08	-	19.5-17.5 17	-	Ø0.85mm to Ø1.12mm
0.85	0.76	-	22.5-20 19.5	-	Ø0.63mm to Ø0.85mm
0.63	0.52	26-23	26-22.5	Ø0.4mm to Ø0.56mm	Ø0.4mm to Ø0.63mm
0.4	0.31	29.5-26.5 26	29.5-26.5 26	Ø0.265mm to Ø0.4mm	Ø0.265mm to Ø0.4mm
0.265	0.18	33-30 29.5	33-30 29.5	Ø0.18mm to Ø0.265mm	Ø0.18mm to Ø0.265mm
"Y" +0.1	"W" -0.05	DOUBLE WIRE	SINGLE WIRE	DOUBLE WIRE	SINGLE WIRE
AWG BARE WIRE RANGE				BARE WIRE RANGE	

THIS DRAWING IS A CONTROLLED DOCUMENT. DWN: H.Ballmer 09JAN2013
 CHK: B.Schnaubelt 23JAN2013
 APVD: T.Klenner 28JAN2013

DIMENSIONS: mm TOLERANCES UNLESS OTHERWISE SPECIFIED:
 0 PLC ±0.13
 1 PLC ±0.13
 2 PLC ±0.13
 3 PLC ±0.13
 4 PLC ±0.13
 ANGLES FINISH "H"

MATERIAL: 5

WEIGHT: -

Customer Drawing

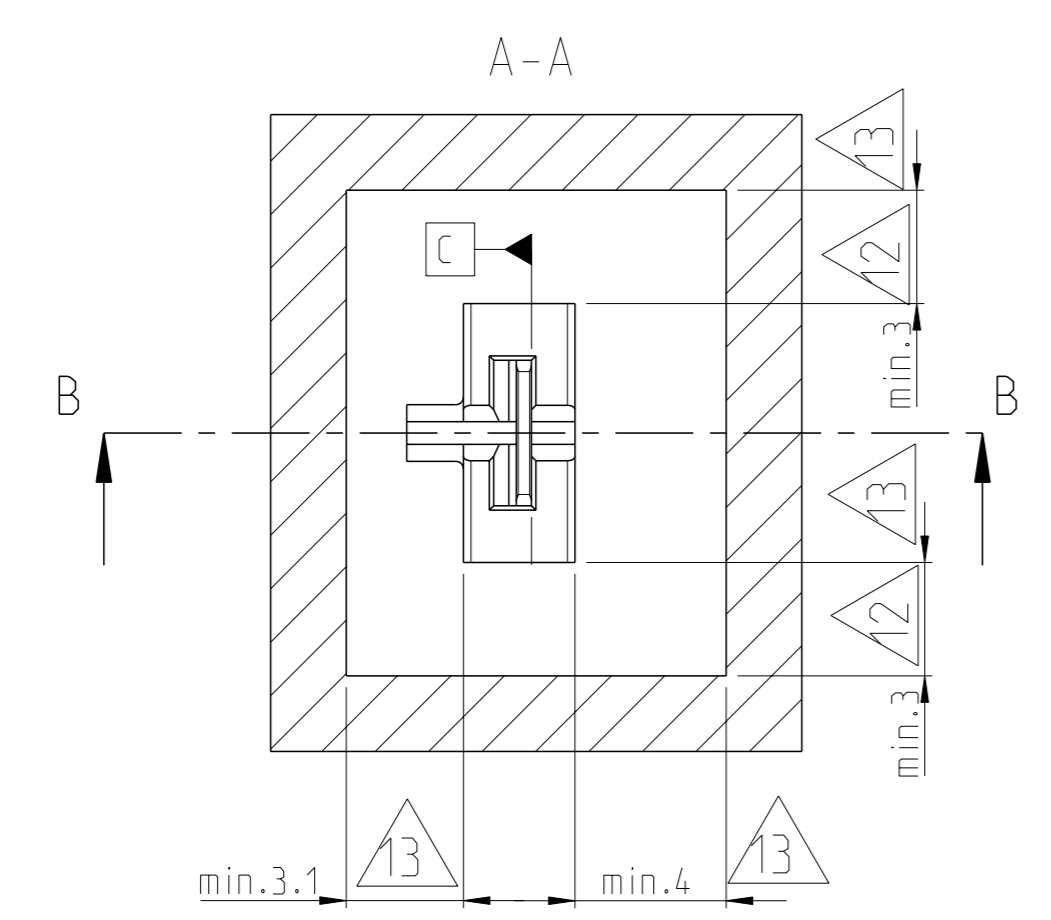
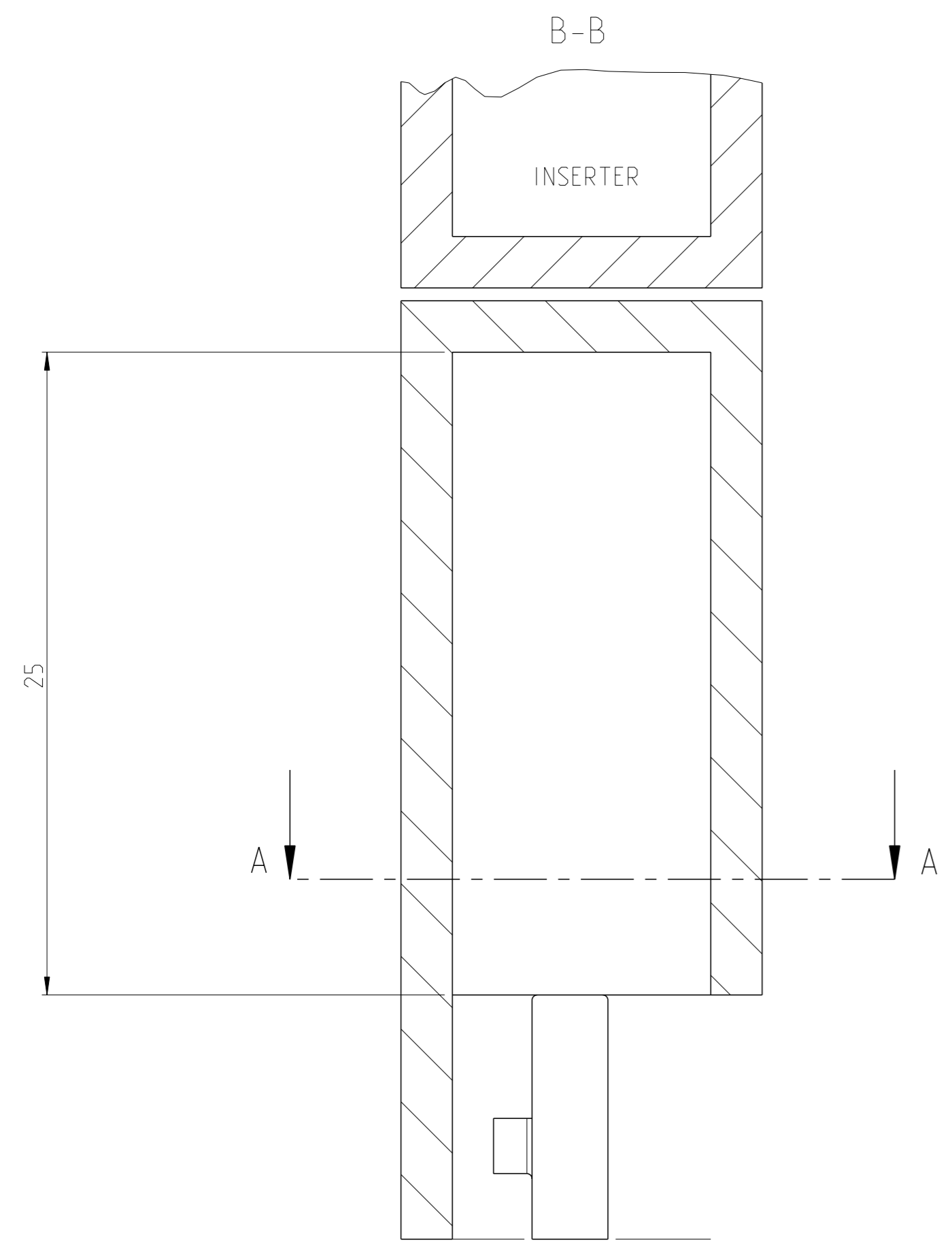
SCALE: 10:1 SHEET: 1 OF 3 REV: A4

STE TE Connectivity

NAME: CAVITY FOR MAG-MATE SLIM-LINE CONTACT WITH MULTISPRNG

SIZE: A1 CAGE CODE: 00779 DRAWING NO: 114-94229-5

LOC	DIST	REV	DATE	OWN	APVD
A1	-	-	-	-	-



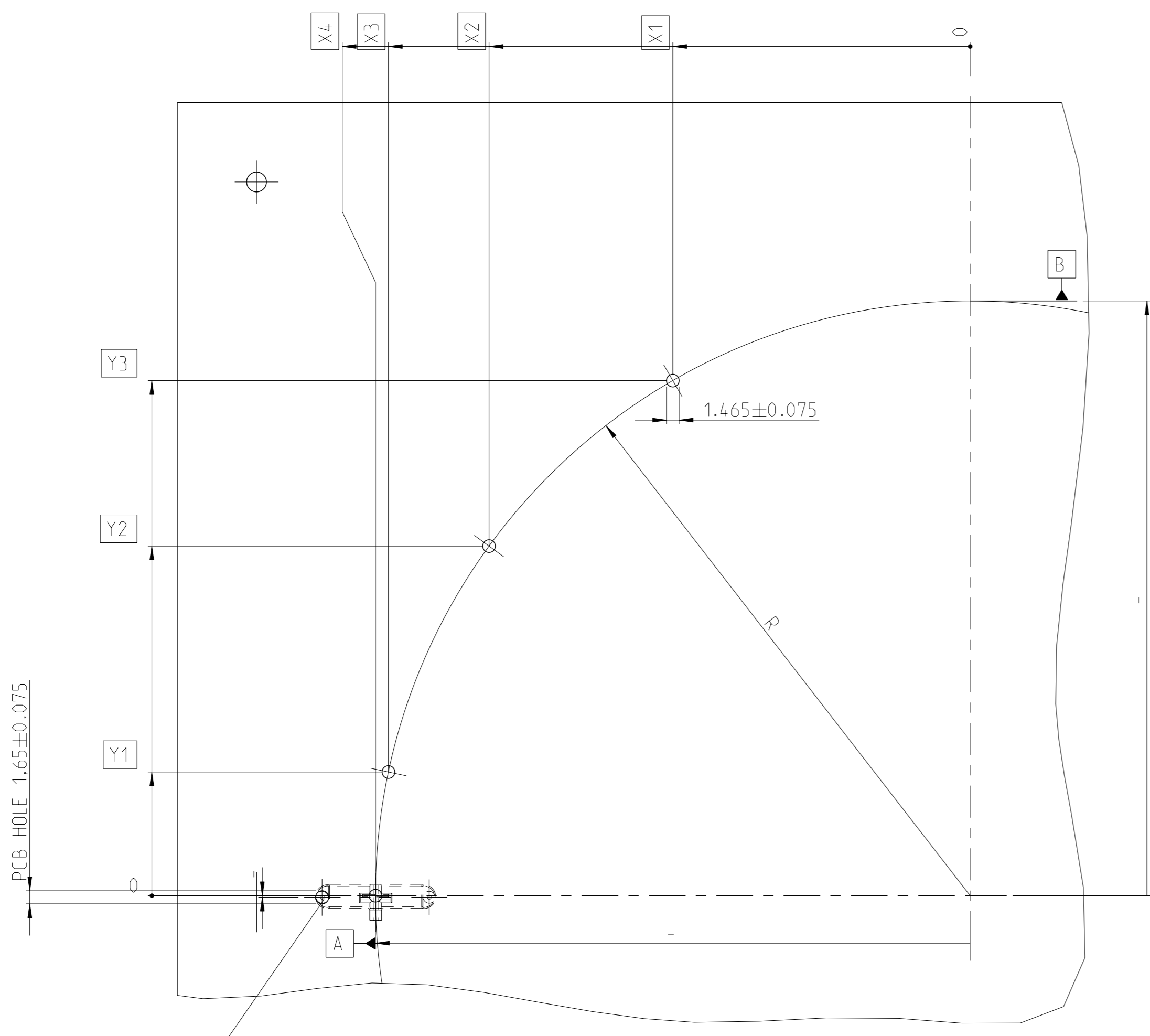
- 1 THIS DRAWING SHOWS 4 TYPES OF CAVITIES FOR HOUSING SLIM LINE MAG-MATE WITH MULTISPING CUSTOMERS ARE ASKED TO LET APPROVE THEIR FINAL DESIGN DRAWING FROM PRODUCT ENGINEERING DEPARTMENT.
- 2 THE WALL THICKNESS AT THE CUT OFF SIDE MUST BE SAME FOR ALL CAVITIES.
- 3 IT MUST BE GUARANTEED THAT THE MAGNET WIRE CAN TOUCH THE GROUND OF SLOT. COIL WINDINGS OR OTHER PARTS HAVE TO BE LOWER THAN THE WIRE SLOT OF CAVITY TO GUARANTEE OPTIMIZED CONNECTIONS.
- 4 THE SLOT WIDTH HAS TO BE ACCORDING TO WIRE DIAMETER ($\emptyset=0,05\text{mm}$) IF WIRES WITH DIFFERENT DIAMETERS SHALL BE USED, PLEASE CONTACT PRODUCT ENGINEERING DEPARTMENT
- 5 RECOMMENDED MATERIAL: PA 66 GF25. IF OTHER MATERIAL TO BE USED, PLEASE CONSULT PRODUCT ENGINEERING DEPARTMENT.
- 6 DRAFT ANGLES MUST BE HELD WITHIN THE FEATURE TOLERANCE.
- 7 THE NOSE IS AT WIRE CUTTING SIDE. THE INSERTER CUTS THE NOSE AND WIRE END DURING CONTACT INSERTION.
- 8 FOR APPLICATION INFORMATION SEE APPLICATION SPEC. 114-94229.
- 9 EXAMPLE FOR AN 1,6mm THICK PCB. FOR DETAILS SEE SPECIFICATION NO. 108-90801
- 10 CONTROLLED FLASH OPTION MUST BE UTILIZED WHEN RETENTION OF BOTH SMALL AND LARGE DIAMETER WIRES MUST BE ACCOMIDATED IN THE SAME CAVITY.
- 11 A WIRE TIE-OFF POST IS RECOMMENDED STARTING A MAGNET WIRE $<\emptyset 0.23\text{mm}$ (SEE SPEC.114-2146 3.2 D).
- 12 FOR MULTIPLE CAVITY BLOCKS, THIS DIMENSION IS USABLE ONLY FOR FIRST AND LAST CAVITY. (SEE SHEET-2)
- 13 IF OTHER DIMENSIONS ARE REQUIRED FOR THE APPLICATION, PLEASE CONTACT TE (DEPARTMENT. APPLICATION TOOLING) . (SEE SHEET-2)
- 14 TO BE APPROVED, ON DEMAND BY TE (DEPARTMENT: PRODUCT ENGINEERING)
- 15 TOLERANCES OF POSITION OF MAG MATE AND CAVITY BEFOR ASSEMBLED WITH PCB
- 16 PCB LAYOUT (HOLES ACC: SPEC. 108-9081
- 17 PROPOSED POSITION OF PILOT PIN

THIS DRAWING IS A CONTROLLED DOCUMENT.		OWN: H. Ballmerl 09JAN2013	
		CHK: B. Schnaubelt 23JAN2013	
DIMENSIONS: mm		APVD: T. Klenner 28JAN2013	NAME: CAVITY FOR MAG-MATE SLIM-LINE CONTACT WITH MULTISPING
TOLERANCES UNLESS OTHERWISE SPECIFIED:		PRODUCT SPEC: 108-94366	
0 PLC ± 0.13		APPLICATION SPEC:	SIZE: A1
1 PLC ± 0.13		WEIGHT: -	CAGE CODE: 00779
2 PLC ± 0.13		Customer Drawing	DRAWING NO: 114-94229-5
3 PLC ± 0.13			SCALE: 10:1
4 PLC ± 0.13			SHEET: 2 OF 3
ANGLES: 45°			REV: A4
FINISH: -			

LOC	DIST	REV	DESCRIPTION	DATE	OWN	APVD
A1	-	-	SEE SHEET 1	-	-	-

2:1

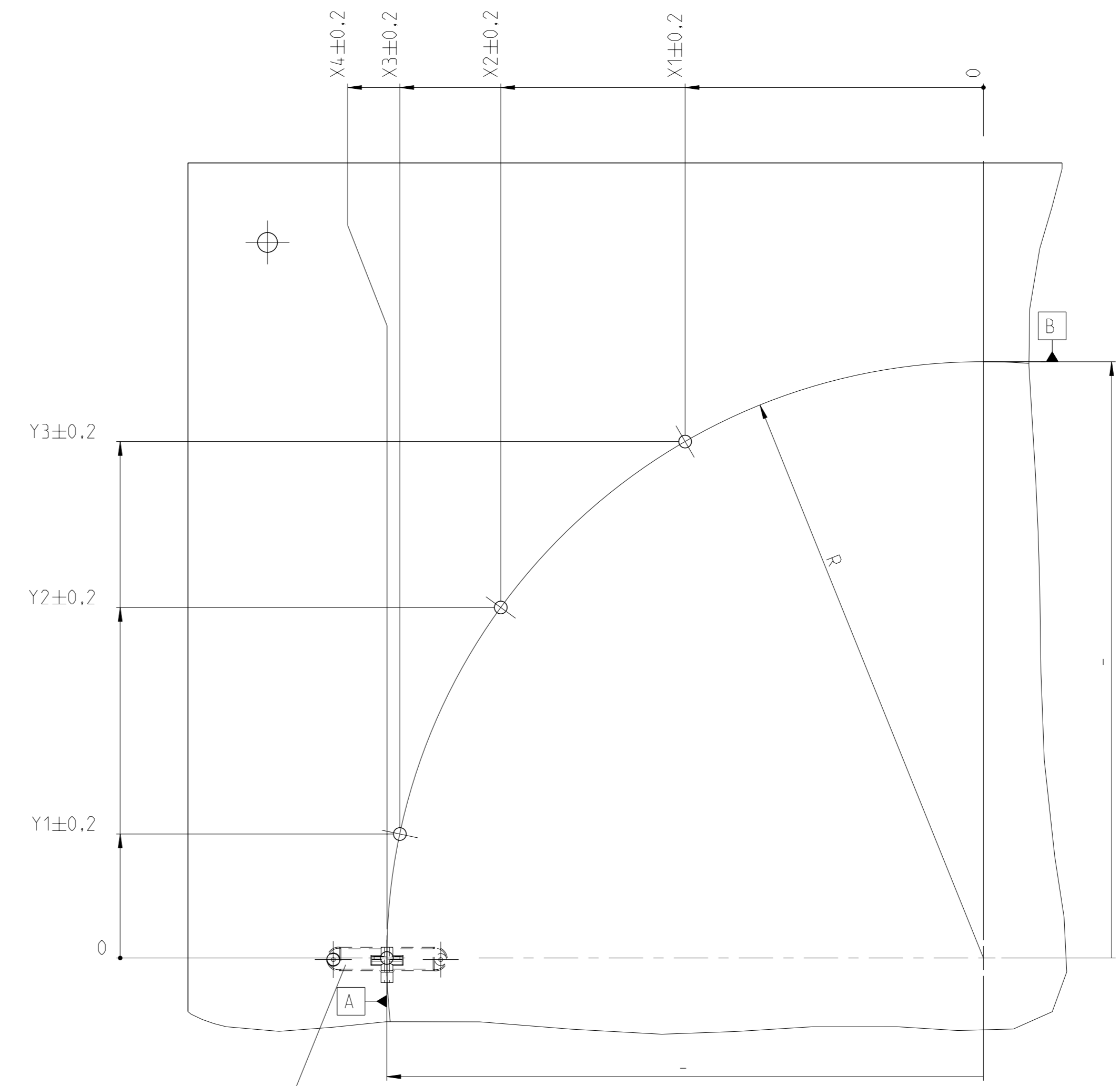
PROPOSED PCB LAYOUT
 FOR ALL CONTACT AND POSITIONS HOLES
 $\varnothing 0.1$ A B



PROPOSED POSITION OF PILOT PIN

2:1

TOLERANCES OF CAVITY POSITION



PROPOSED POSITION OF PILOT PIN

THIS DRAWING IS A CONTROLLED DOCUMENT.		OWN: H. Ballmerl 09JAN2013	TE Connectivity
DIMENSIONS: mm		CHK: B. Schnaubelt 23JAN2013	
TOLERANCES UNLESS OTHERWISE SPECIFIED:		APVD: T. Klöpper 28JAN2013	NAME: CAVITY FOR MAG-MATE SLIM-LINE CONTACT WITH MULTISPRNG
0 PLC ±0.13 1 PLC ±0.13 2 PLC ±0.13 3 PLC ±0.13 4 PLC ±0.13		PRODUCT SPEC: 108-94366	SIZE: A1
MATERIAL: - FINISH: -		APPLICATION SPEC: -	CAGE CODE: 00779
WEIGHT: - FINISH: -		RESTRICTED TO: -	SCALE: 10:1
Customer Drawing		SCALE: 10:1	SHEET 3 OF 3