

# APPLICATION SPECIFICATION

## 1. SCOPE

This specification covers the requirements for application of those Holland designed AMP-LATCH\* ribbon cable connectors as mentioned in fig. 8.

NOTE Unless otherwise specified, all dimensions are in mm.  
Inch equivalents may be obtained by dividing the dimensions by 25,4 (millimeters) and rounding to the nearest thousandth.

## 2. NOMENCLATURE

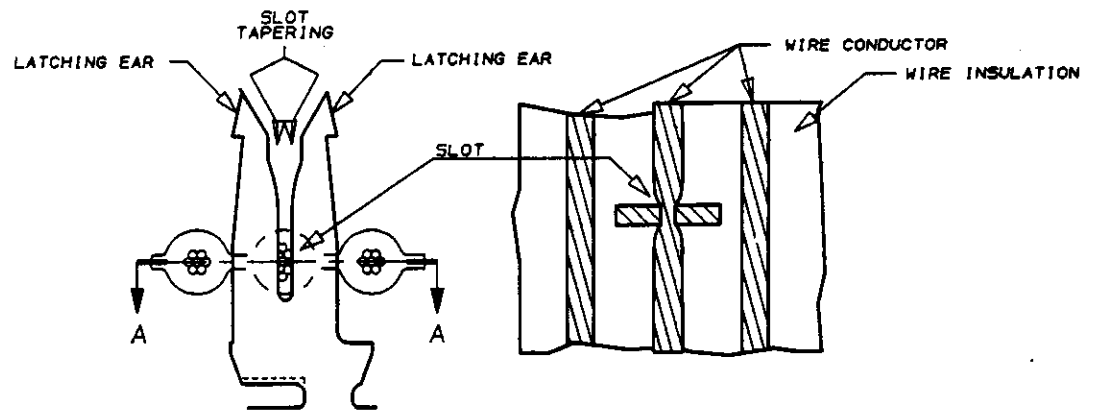


Figure 1

## 3. REQUIREMENTS

### 3.1 Cable Requirements

Stranded conductors: 0,09mm<sup>2</sup> (28AWG) 7-strands tinned copper.  
Solid conductors: 0,25; 0,33; 0,4mm Ø (30; 28; 26AWG. solid copper.)  
Insulation: PVC - cable thicknesses see ② in Figure 2.  
Insulation resistance: 10.000 megohms per 3m.  
Voltage Rating: 300 Volts per UL Style 2651.  
Temperature Rating: -20°C to +105°C.

\* Trademark of AMP Incorporated.

THIS INFORMATION IS CONFIDENTIAL AND IS DISCLOSED TO YOU ON  
CONDITION THAT NO FURTHER DISCLOSURE IS MADE BY YOU TO OTHER  
THAN AMP PERSONNEL WITHOUT WRITTEN AUTHORIZATION FROM AMP-HOLLAND B.V.

LOC.	H	DR.	W. VERBEET	DATE	30-03-90	<b>AMP</b>	AMP-HOLLAND B.V. s-Hertogenbosch, The Netherlands.						
SIZE	A4	CHK.	R VERSTIJNEN	DATE	13-9-'90		NAME APPLICATION OF AMP-LATCH, RIBBON CABLE CONNECTORS.						
LTR	REVISION RECORD	DR.	DATE	APP.	L v SOEST	DATE	17-9-90	NO.	114-19022	SHEET	1 OF 7	REV.	0

114-19022

NUMBER

AMP SECURITY  
CLASSIFICATION

THIS INFORMATION IS CONFIDENTIAL AND IS DISCLOSED TO YOU ON  
CONDITION THAT NO FURTHER DISCLOSURE IS MADE BY YOU TO OTHER  
THAN AMP PERSONNEL WITHOUT WRITTEN AUTHORIZATION FROM AMP-HOLLAND B.V.

LOC.

H

SIZE

A4

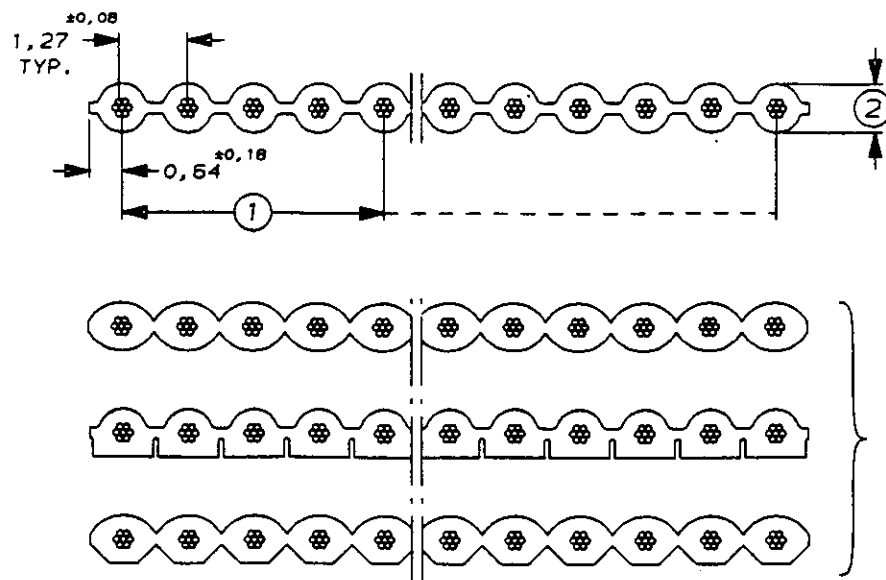
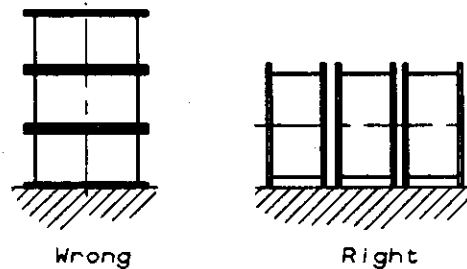


Figure 2

- ① Tolerance on dimensions between conductors:  
185 thru 1834  $\pm 0,25$   
1835 thru 1864  $\pm 0,38$
- ② Thickness:  $0,94 \pm 0,20$  for cable with stranded conductors.  
 $0,84 \pm 0,15$  for cable with solid conductors.

Ribbed shape of insulation shall be symmetric regarding to conductors.

To prevent conductor spacing deformation, coils shall be stored as indicated in figure 3.



Store and transport prescription

Figure 3

<b>AMP</b>		AMP-HOLLAND B.V. s-Hertogenbosch, The Netherlands.	
NAME APPLICATION OF AMP-LATCH, RIBBON CABLE CONNECTORS.			
NO.	114-19022	SHEET 2 OF 7	REV. 0

114-19022

NUMBER

AMP SECURITY  
CLASSIFICATION

### 3.2 Cable Preparation

Each cable end shall be cut straight and perpendicular to the edge of the cable as indicated in Figure 5.

proper cutting tooling shall be used, by preference with cutting construction as indicated in Figure 4, to avoid conductor spacing deformation and burrs.

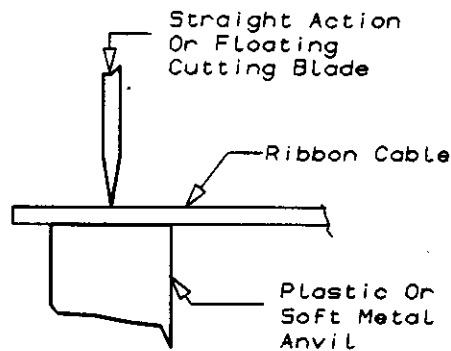


Figure 4

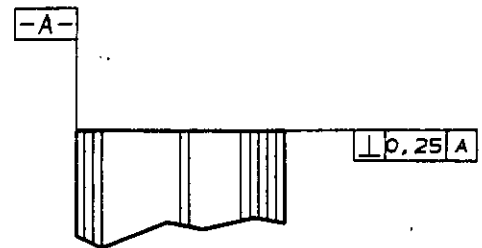


Figure 5

### 3.3 Cable Location

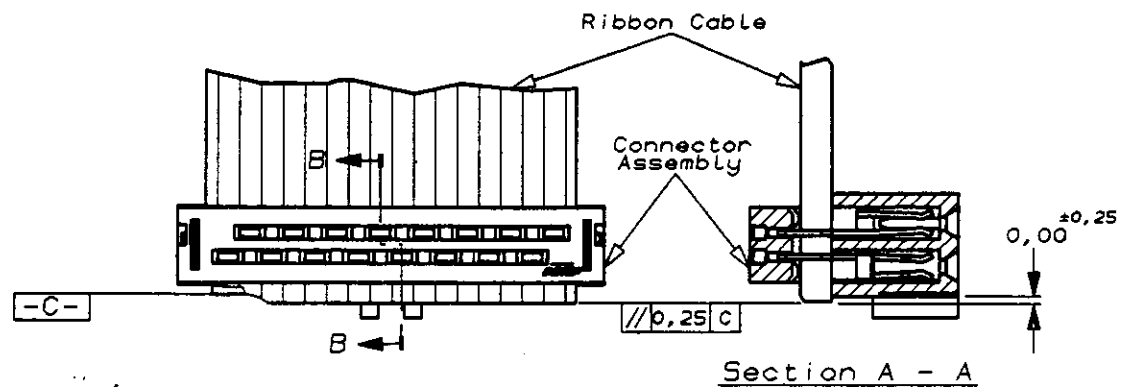


Figure 6

Cable shall be located relative to the front of the connector assembly within the limits indicated in Figure 6.

THIS INFORMATION IS CONFIDENTIAL AND IS DISCLOSED TO YOU ON CONDITION THAT NO FURTHER DISCLOSURE IS MADE BY YOU TO OTHER THAN AMP PERSONNEL WITHOUT WRITTEN AUTHORIZATION FROM AMP-HOLLAND B.V.

LOC.  
H  
SIZE  
A4

**AMP**

AMP-HOLLAND B.V.  
s-Hertogenbosch,  
The Netherlands.

NAME APPLICATION OF AMP-LATCH,  
RIBBON CABLE CONNECTORS.

NO. 114-19022

SHEET  
3 OF 7

REV.  
0

### 3.4 Terminal Position

#### A. Alignment

Each terminal shall straddle the conductor in the area of termination as indicated in figure 1.

#### B. Exposed Copper

There shall be no visually exposed copper chips or broken strands.

### 3.5 Cover

#### A. Alignment

After the cover is applied, both terminal tips shall be visible in each window as indicated in figure 7. If one is missing this is a good indication that it is bent downward under the cover and is cause for rejection.

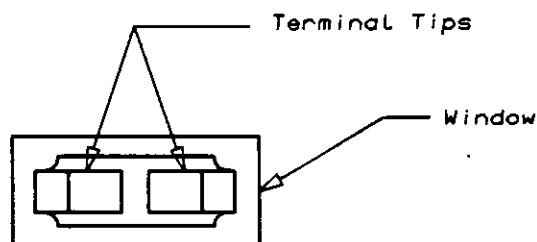


Figure 7

#### B. Securement Of Cover

It shall be assured that cover is securely applied to the terminated housing assembly.

<b>AMP</b>		AMP-HOLLAND B.V. s-Hertogenbosch, The Netherlands.	
NAME APPLICATION OF AMP-LATCH, RIBBON CABLE CONNECTORS.			
NO.	114-19022	SHEET 4 OF 7	REV. 0

NUMBER 114-19022

NUMBER

AMP SECURITY  
CLASSIFICATION

THIS INFORMATION IS CONFIDENTIAL AND IS DISCLOSED TO YOU ON  
CONDITION THAT NO FURTHER DISCLOSURE IS MADE BY YOU TO OTHER  
THAN AMP PERSONNEL WITHOUT WRITTEN AUTHORIZATION FROM AMP-HOLLAND B.V.

LOC.  
H  
SIZE  
A4

### 3.6 Termination Height

Termination heights of relative connectors are shown in Figure 8 and shall be measured at both connector ends.

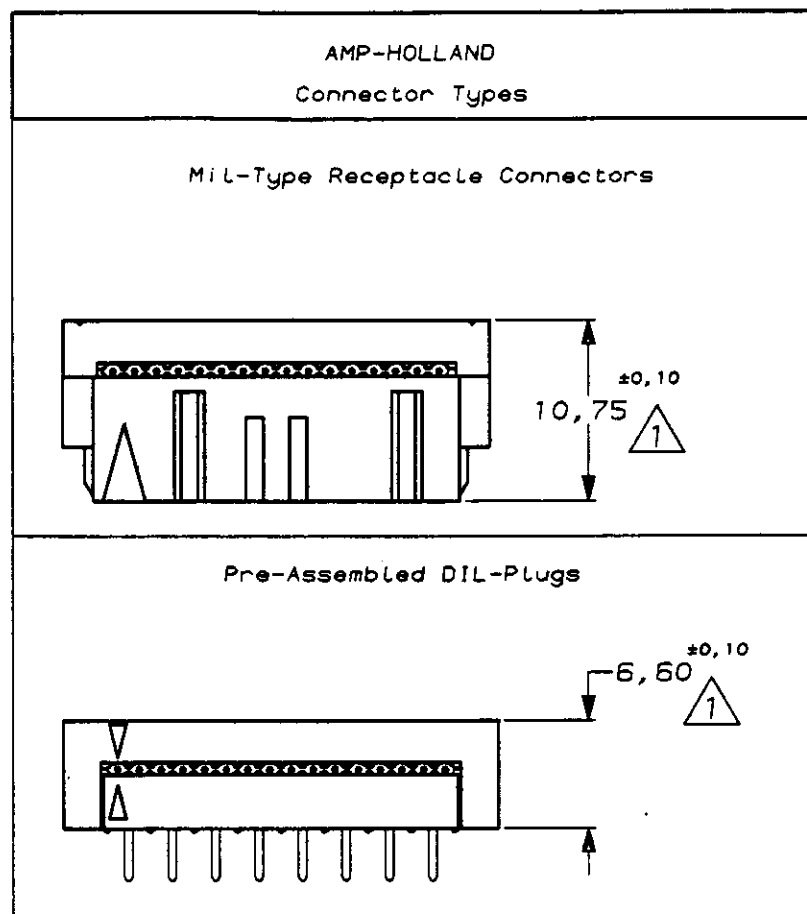


Figure 8

1. On condition that cable is used having thickness within range as specified in DIN VDE 0811, the termination height shall be within DIN 41651.

**AMP**

AMP-HOLLAND B.V.  
s-Hertogenbosch,  
The Netherlands.

NAME APPLICATION OF AMP-LATCH,  
RIBBON CABLE CONNECTORS.

NO. 114-19022

SHEET  
5 of 7

REV.  
0

NUMBER 114-19022

AMP SECURITY  
CLASSIFICATION

THIS INFORMATION IS CONFIDENTIAL AND IS DISCLOSED TO YOU ON  
CONDITION THAT NO FURTHER DISCLOSURE IS MADE BY YOU TO OTHER  
THAN AMP PERSONNEL WITHOUT WRITTEN AUTHORIZATION FROM AMP-HOLLAND B.V.

LOC.  
H  
SIZE  
A4

# 1. VISUAL AID

Figure 9 and 10 show the visible requirements upon the terminated AMP-LATCH Connectors and shall be used by production personnel to visually ensure a proper applied product. Applications which are not visually correct shall be dimensionally inspected using the information given in the main body of this specification.

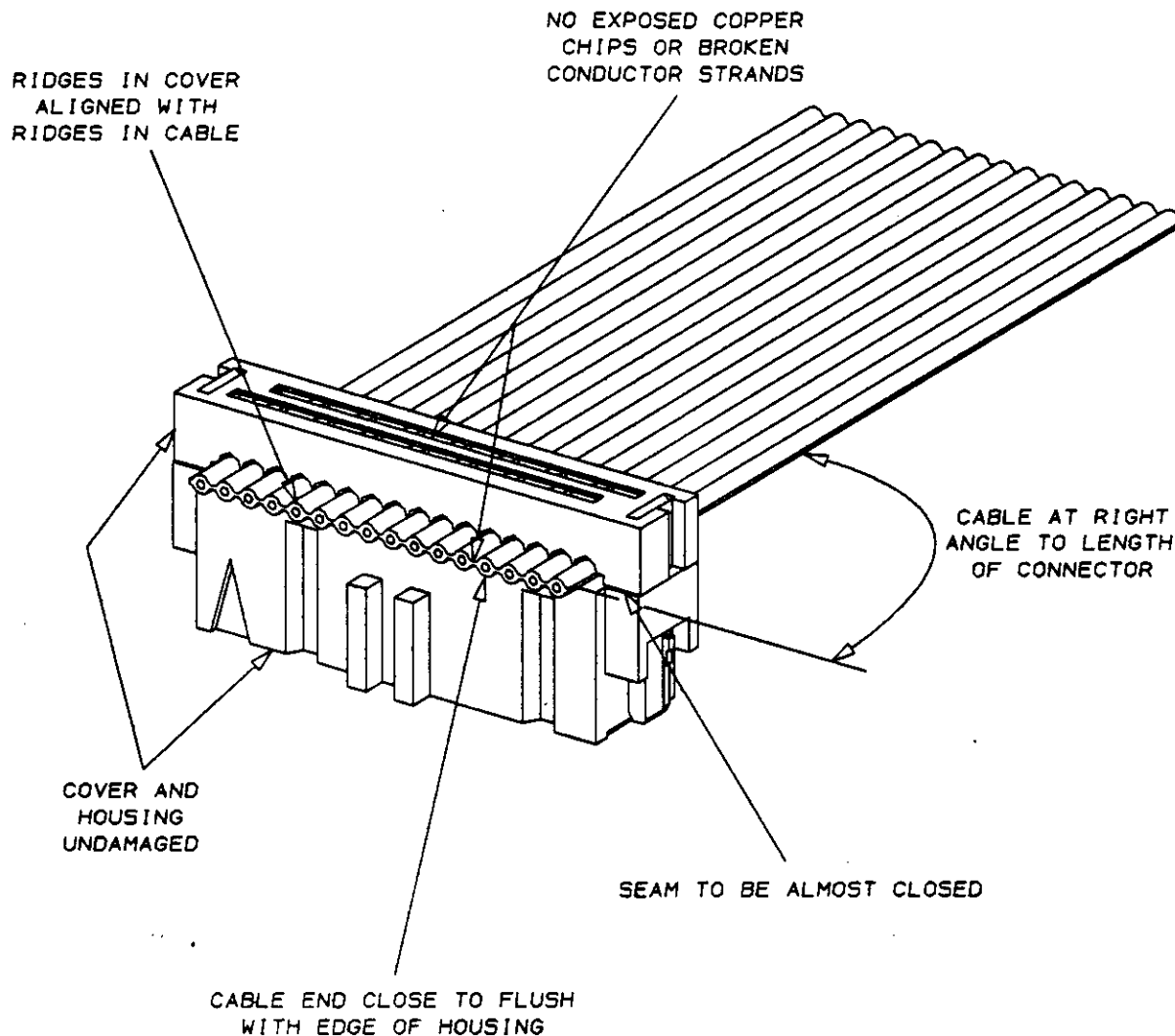


Figure 9

<b>AMP</b>		AMP-HOLLAND B.V. s-Hertogenbosch, The Netherlands.	
NAME APPLICATION OF AMP-LATCH, RIBBON CABLE CONNECTORS.			
NO.	114-19022	SHEET 6 OF 7	REV. 0

NUMBER 114-19022

AMP SECURITY CLASSIFICATION

AMP SECURITY CLASSIFICATION

THIS INFORMATION IS CONFIDENTIAL AND IS DISCLOSED TO YOU ON CONDITION THAT NO FURTHER DISCLOSURE IS MADE BY YOU TO OTHER THAN AMP PERSONNEL WITHOUT WRITTEN AUTHORIZATION FROM AMP-HOLLAND B.V.

LOC.

H

SIZE

A4

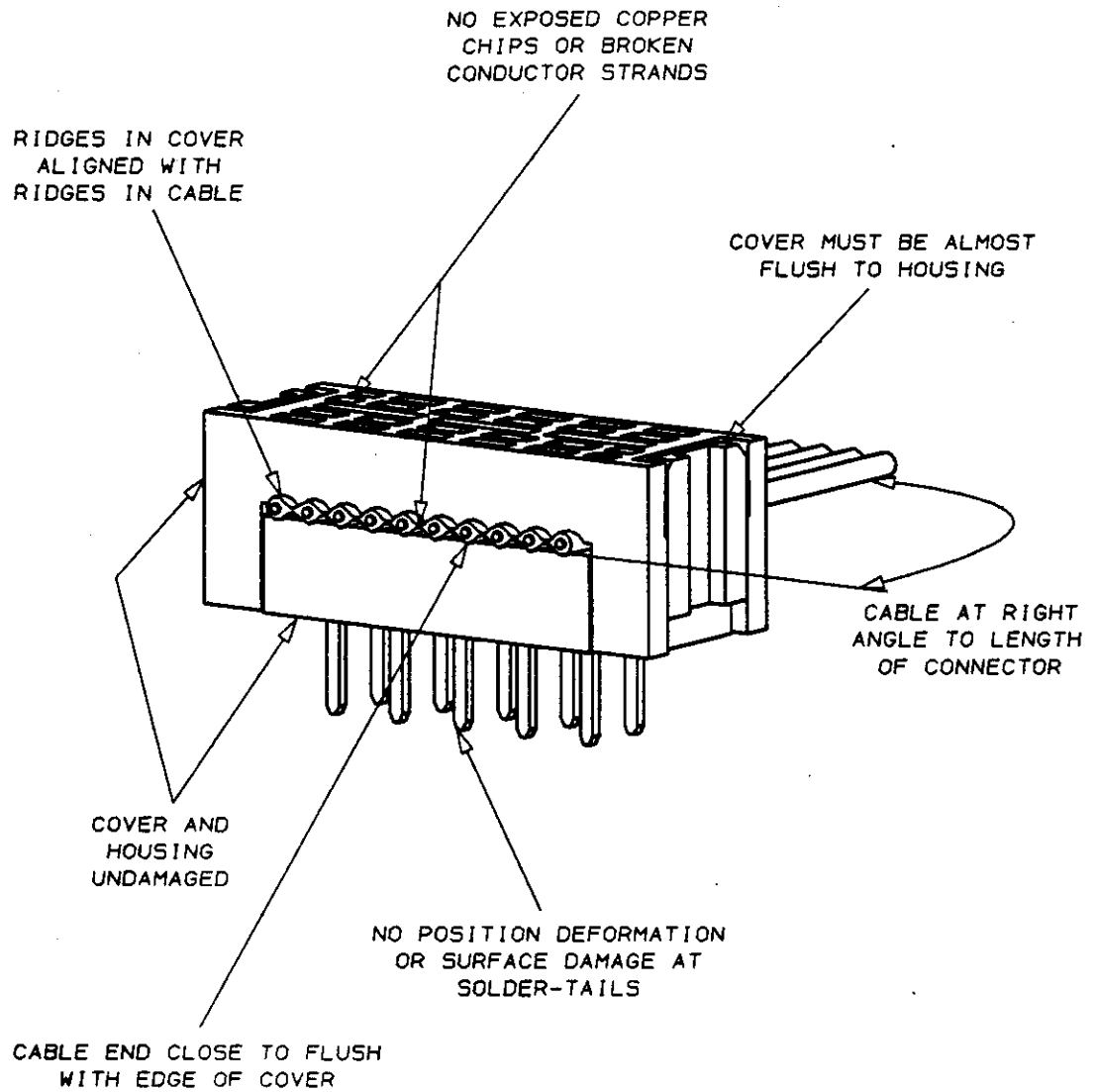


Figure 10

**AMP**

AMP-HOLLAND B.V.  
s-Hertogenbosch,  
The Netherlands.

NAME APPLICATION OF AMP-LATCH,  
RIBBON CABLE CONNECTORS.

NO. 114-19022

SHEET  
7 OF 7

REV.  
0