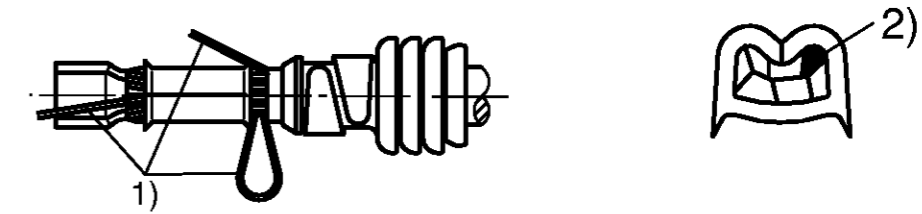


Ausführung / VERSION		ELO Power Seal 2.8 Buchsen- und Messerkontakt / ELO POWER SEAL 2.8 SOCKET-AND BLADE TERMINAL				
Leitung mit red. Isolierung WIRE WITH THIN INSULATION	Querschnitt CROSS SECTION (mm ²)	0.75	1.0	1.5	2.5	
	Leitungsdurchmesser WIRE DIAMETER (mm)	1.9 -0.2	2.1 -0.2	2.4 -0.2	3.0 -0.3	
	Abisolierlänge STRIPPING LENGHT (mm) Maß L (mm) DIM. L (mm)	4.7 ±0.2		4.7 ±0.2		
ELO Power 2.8 Kontakt	Buchsenkontakt SOCKET TERMINAL	*-1411588-* / *-1411593-*		*-1411589-* / *-1411594-*		
	Messerkontakt BLADE TERMINAL					
ELO POWER 2.8 TERMINAL Tyco	Dichttülle SEAL	siehe / SEE 1411637				
	Adercrimp WIRE CRIMP	Maß H DIM. H (mm)	1.27 ±0.05	1.36 ±0.05	1.54 ±0.05	1.84 ±0.05
		Maß W DIM. W (mm)	2.03 F (.080)		2.54 F (.100)	
	Schnitt SECTION A-A	Auszugskraft DIN EN 60352-2 EXTENSION FORCE DIN EN 60352-2	>= 80N	>= 100N	>= 140N	>= 190N
	Isolationscrimp INSUL. CRIMP	Richt-Maß X (mm) 3 PROPOSED DIM. X	4.15	4.15	3.8	4.6
	Schnitt SECTION B-B	Richt-Maß Y (mm) 3 PROPOSED DIM. Y	4.15		4.1	4.2
Werkzeug TOOL Tyco	Crimpschnellwechselwerkzeug APPLICATOR	9-0541108-X		9-0541109-X		
	Crimp-Handzange HAND TOOL	0-1393477-3		5-1393462-9		

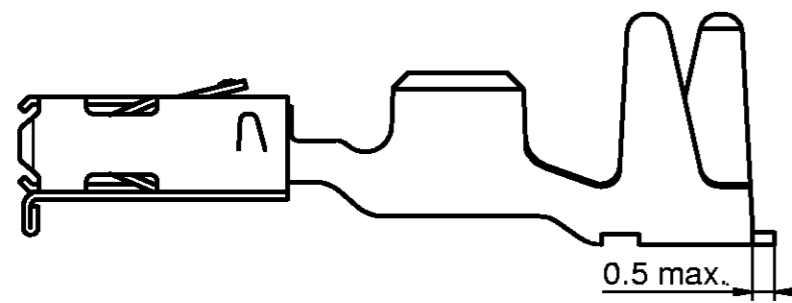
Maße ohne Toleranzangabe sind Richtmaße
DIMENSIONS WITHOUT TOLERANCE ARE PROPOSAL

Nicht zulässig:
NOT PERMISSIBLE:

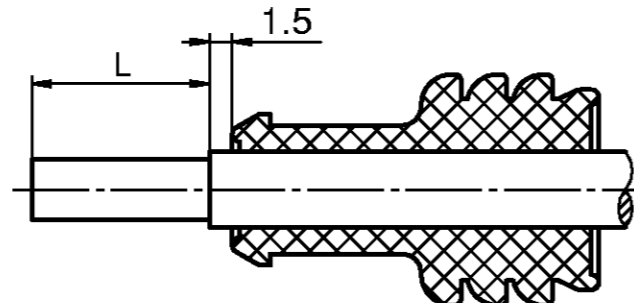


- 1) Drähte außerhalb der Crimpung
STRANDS OUTSIDE CRIMP
- 2) Fehlen einzelner Drähte
MISSING OF INDIVIDUAL STRANDS

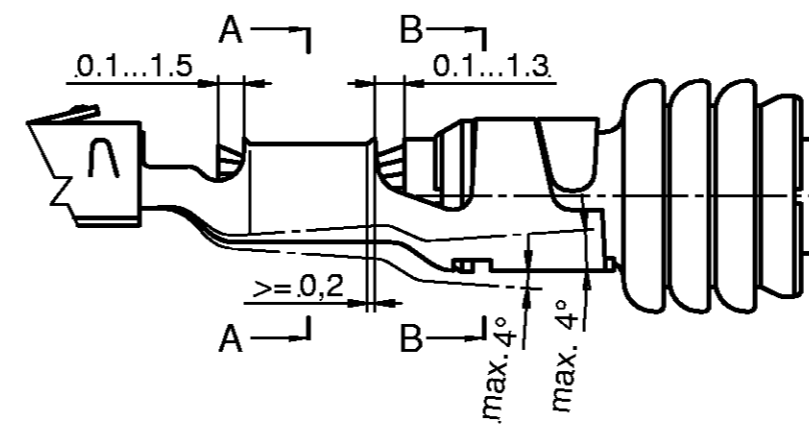
Schneidüberstand
CUT OFF LENGTH
dargestellt / SHOWN
-1411589-



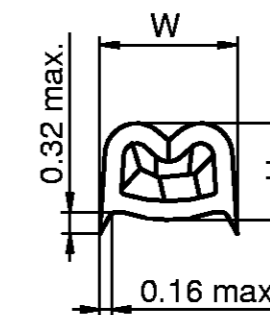
Abisolierlänge
STRIPPING LENGTH



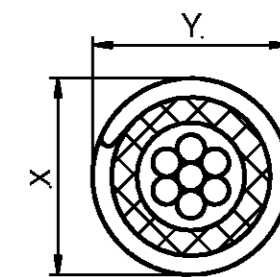
Crimpgeometrie
CRIMP GEOMETRIE



Schnitt A-A
SECTION



Schnitt B-B
SECTION



3) Festsitz und Unversehrtheit der Tülle beachten
TAKE CARE OF FIRM SEAT AND NON HARMING OF SEAL

THIS INFORMATION IS CONFIDENTIAL AND IS DISCLOSED TO YOU ON THE CONDITION THAT NO FURTHER DISCLOSURE IS MADE BY YOU TO OTHER THAN AMP PERSONNEL WITHOUT WRITTEN AUTHORIZATION FROM AMP INCORPORATED BARRISBURG, PA.

LOC	
AI	
DIST	
-	

B	SEE EC EG00-0249-03	27.01.03	Abr	
A1	SEE EC EG00-0298-02	30.01.02	Abr	
A	Spezifikation erstellt, siehe EC EG00-0991-01	14.03.01	Abr	-
P	LTR	REVISION RECORD	DATE	DWN

DIMENSIONS:		TOLERANCES UNLESS OTHERWISE SPECIFIED:	
mm		0 PLC	±
		1 PLC	±
		2 PLC	±
		3 PLC	±
		4 PLC	±
ANGLES:	1°		
SURFACE TEXTURE:			

DWN	14.03.01	MATERIAL		HEAT TREAT	
Abraham					
CHK	14.03.01				
C.Göppel					
APVD	28.03.01				
M.Bleicher					
NAME: Verarbeitungsanweisung / WORKING INSTRUCTIONS ELO Power Seal 2.8 Crimpkontakt / ELO POWER SEAL 2.8 CRIMP TERMINAL					
SCALE	SIZE	DRAWING NO	SHEET	OF	REV
-	A2	114 - 18434	1	OF 1	B