



Plastic panel mounting

Table of contents

1. INTRODUCTION ..... 2

2. SUPPORTING DOCUMENTS ..... 2

2.1. Customer drawings..... 2

2.2. Product specification..... 2

2.3. Application Specification..... 2

2.4. Standards..... 2

3. DESCRIPTION..... 3

3.1. Assembly product ..... 3

3.2. Panel cut..... 3

4. ASSEMBLY ..... 4

5. STORAGE..... 6



## 1. INTRODUCTION

This specification contains the regulations for assembly of Plastic panel mounting product.

The following components are available in this system:

HB-LM-TOP/HB-PLM-PM-BASE

## 2. SUPPORTING DOCUMENTS

### 2.1. Customer drawings

For dimensions and materials of the individual parts, please refer to the relative customer drawings of HB-LM-TOP/HB-PLM-PM-BASE.

### 2.2. Product specification

The product specifications of the used articles are to be taken into account. The product specification describes the technical data as regulations, temperature range and degree of protection. For further reference, please refer to product spec. 108-137479.

### 2.3. Application Specification

Connectors shall be assembled as below mentioned application specifications to ensure correct connector assembly.

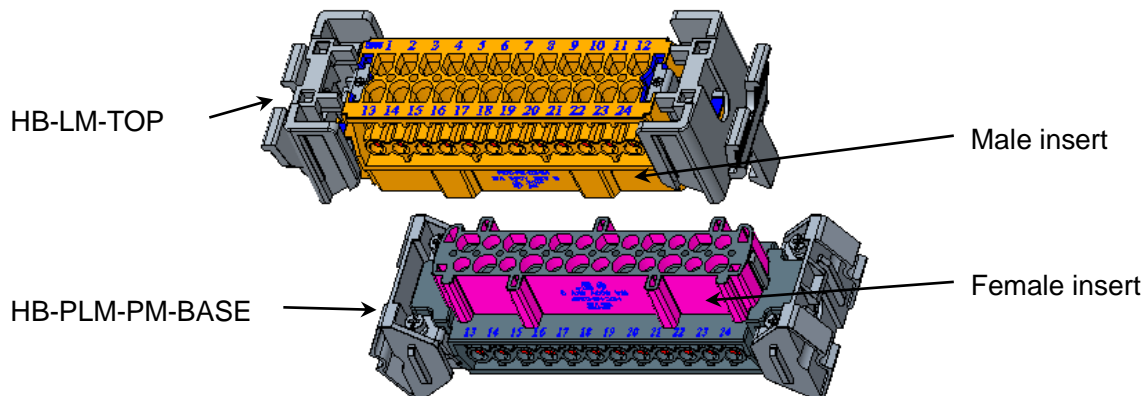
### 2.4. Standards

- EN 61984: Connectors - Safety requirements and tests
- IEC 60664-1: Insulation coordination for equipment within low-voltage systems (Part 1)
- EN 60529: Degrees of Protection Provided by Enclosures (IP Code)
- EN 60068: Environmental testing

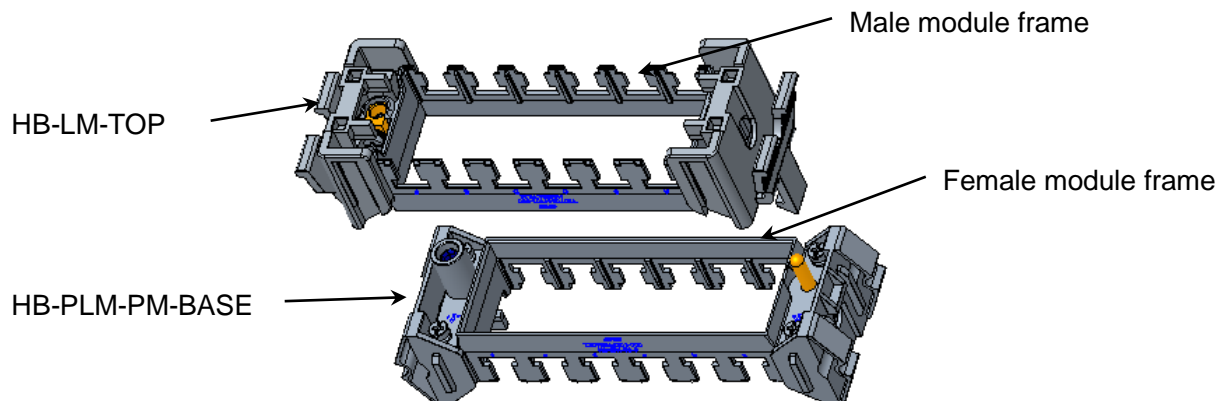
## 3. DESCRIPTION

### 3.1. Assembly product

The following picture shows an example of complete assembly product.



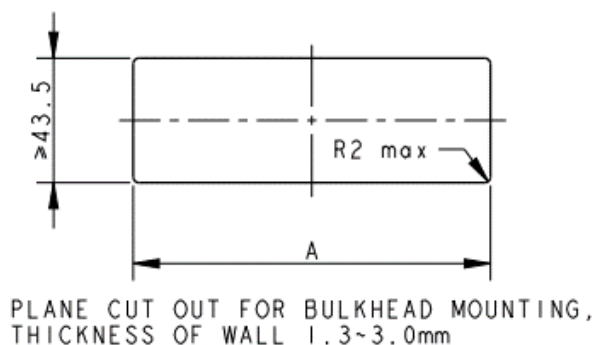
The Plastic panel mounting can also use on module frame. The following picture shows an example of complete assembly product.



### 3.2. Panel cut

The following table shows the dimensions of panel cut.

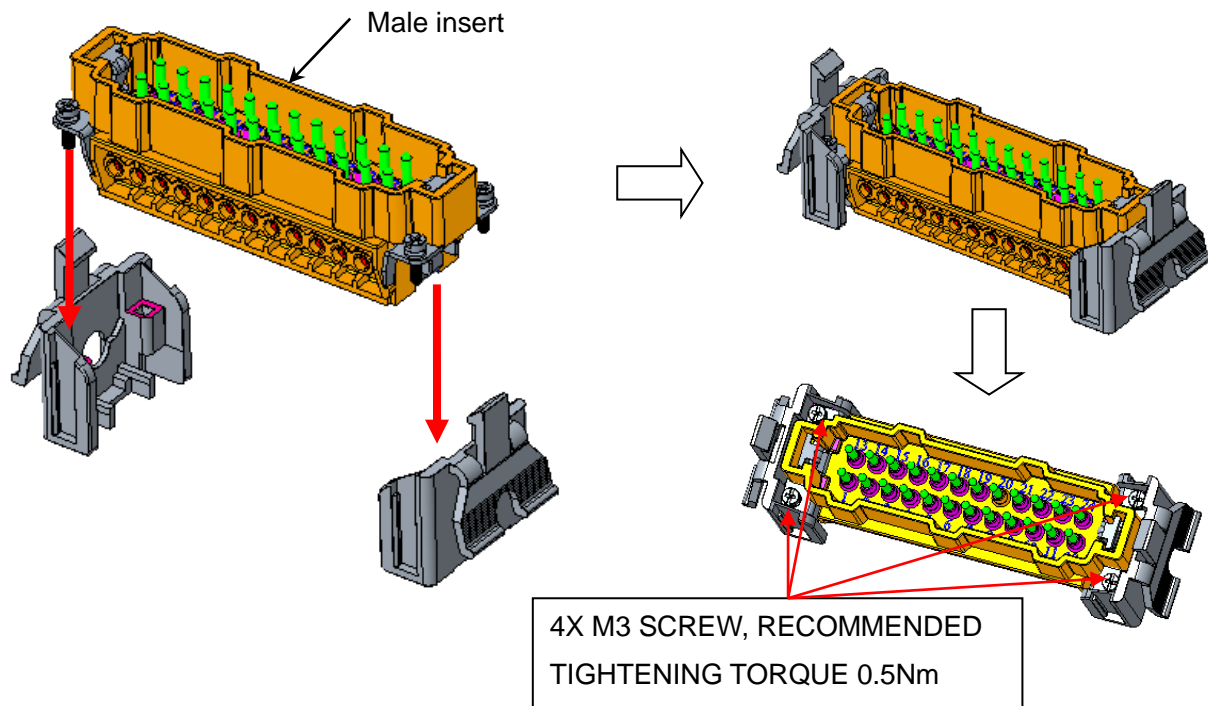
HB INSERT SIZE	A <sup>+0.3</sup>
6	64.5
10	77.5
16	97.5
24	124.5



## 4. ASSEMBLY

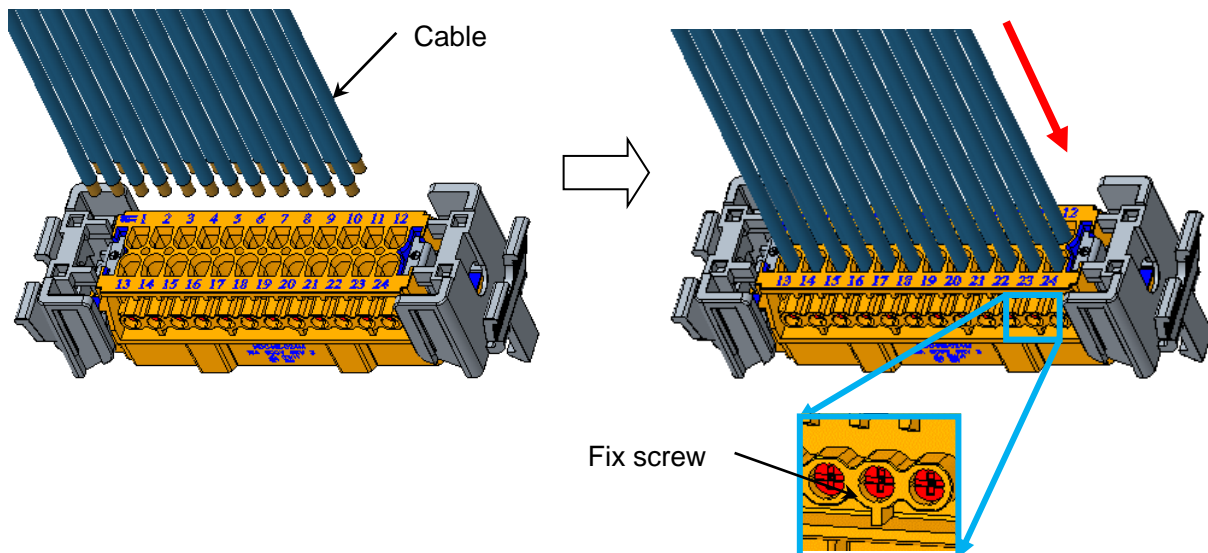
The following steps shows an example of Normal inserts assembly. It also suitable to Module frame assembly.

Step1. Assembly male insert into HB-LM-TOP

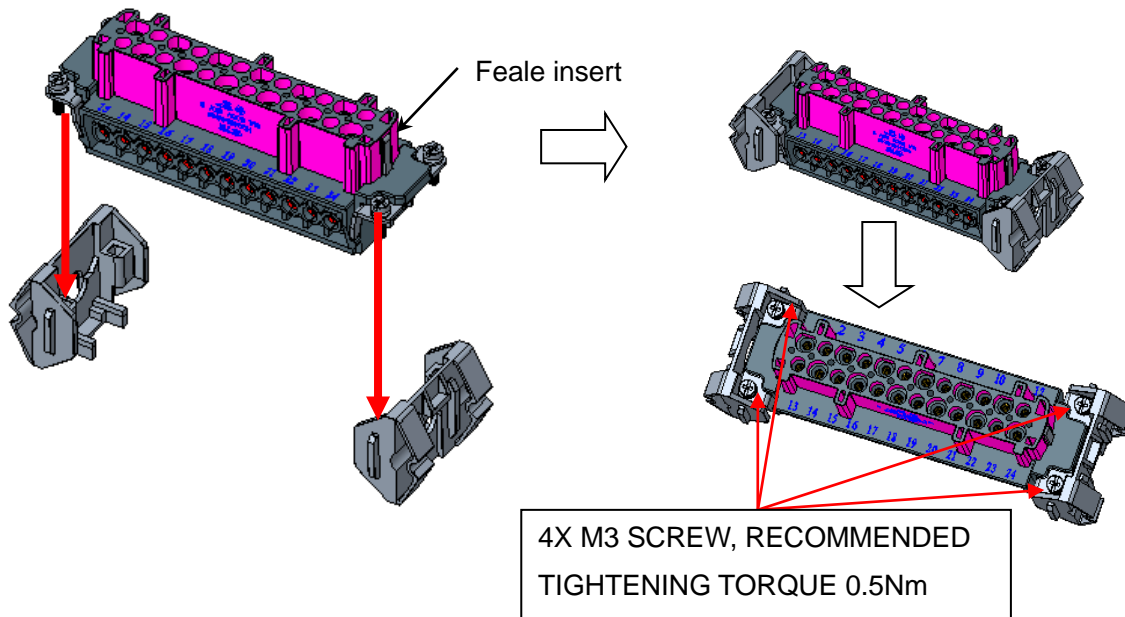


Step2. Assembly cables into Male insert.

- Inserting cables to inserts.
- Tightening fix screw up.

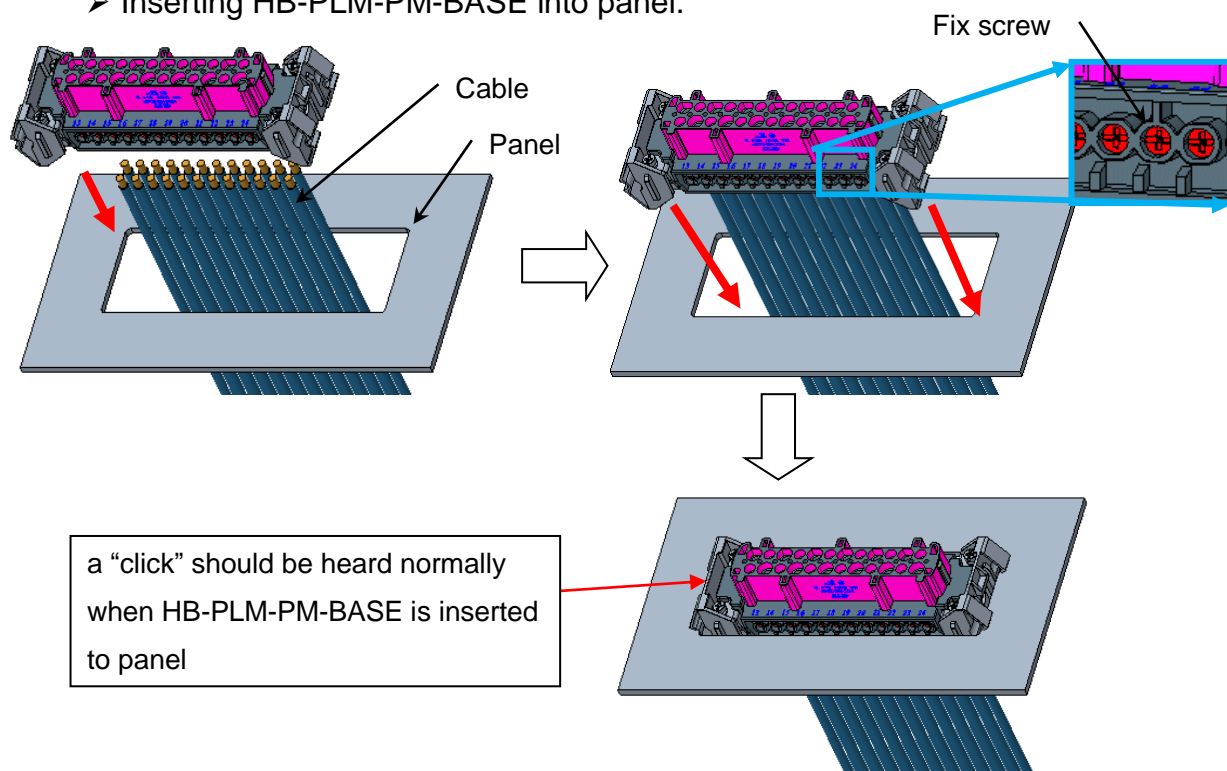


## Step3. Assembly female insert into HB-PLM-PM-BASE

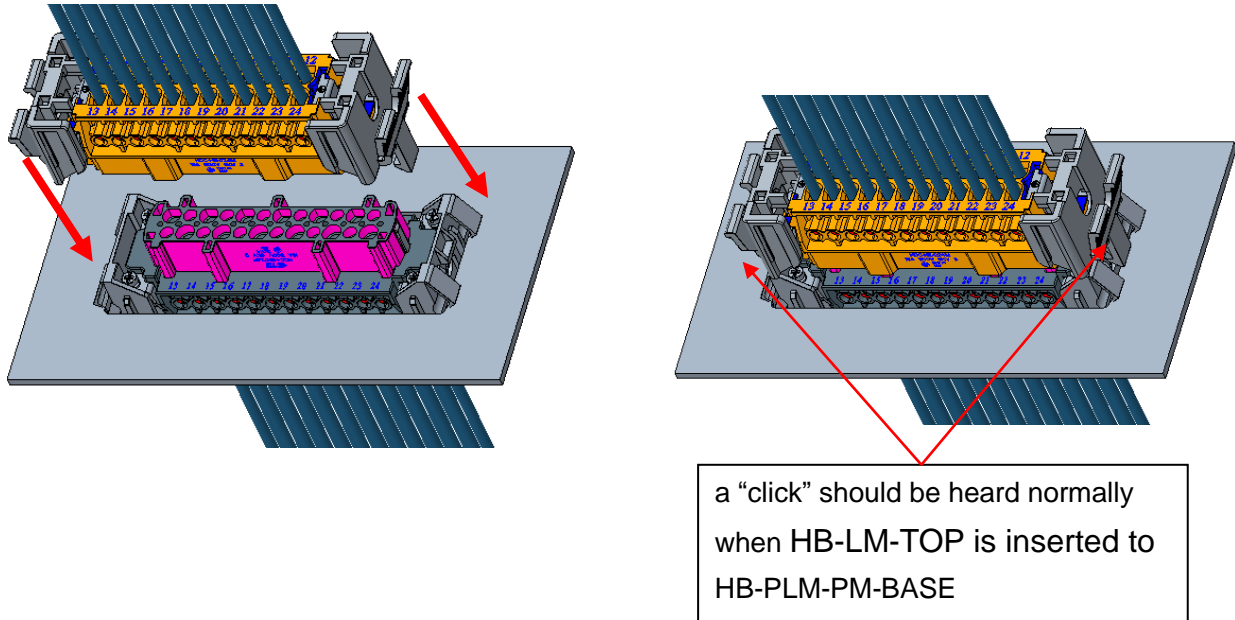


## Step4. Assembly HB-PLM-PM-BASE into panel

- Cutting the panel, the dimensions according to 3.2
- Inserting cables through panel.
- Inserting cables to inserts.
- Tightening fix screw up.
- Inserting HB-PLM-PM-BASE into panel.



## Step5. Assembly HB-LM-TOP to HB-PLM-PM-BASE.



### Note:

1. Either code pins or guide pins and bushes can replace the standard fixing screws if have the coding requirement.
2. For more detailed information for related inserts and contacts, please refer to related inserts and contacts application specifications.

## 5. STORAGE

The connectors should be stored in the air ventilation, no corrosive gas, no rain and no snow in the warehouse. Relative humidity: less than 85% RH.



Any conflict is found between this file and customer drawings, customer drawings are preferential.  
And please contact TE Connectivity related engineer if necessary.

----- End -----