

4

3

2

1

THIS DRAWING IS UNPUBLISHED.

RELEASED FOR PUBLICATION

© COPYRIGHT

ALL RIGHTS RESERVED.

LOC DIST


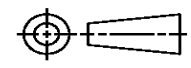
REVISIONS

P	LTR	DESCRIPTION	DATE	DWN	APVD

# REPLACED BY OCEAN STYLE APPLICATOR PART NUMBER

FOR REPLACEMENT PARTS FOR APPLICATOR REFER TO ADDITIONAL PAGE(S). SPARE PARTS KIT (IF LISTED) WILL REMAIN AVAILABLE.

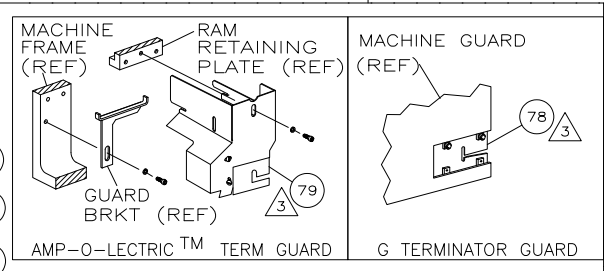
THE REPLACEMENT OCEAN STYLE APPLICATOR HAS THE SAME TERMINATOR/PRESS INTERFACE AS APPLICATOR

THIS DRAWING IS A CONTROLLED DOCUMENT.		DWN	 <b>TE Connectivity</b>		
DIMENSIONS:		CHK			
		APVD	NAME		
TOLERANCES UNLESS OTHERWISE SPECIFIED: 0 PLC ± 1 PLC ± 2 PLC ± 3 PLC ± 4 PLC ± ANGLES ±		PRODUCT SPEC	RESTRICTED TO		
MATERIAL		APPLICATION SPEC	SIZE	CAGE CODE	DRAWING NO
FINISH		WEIGHT	A3		C-
			SCALE	SHEET	OF
					REV

THIS DRAWING IS UNPUBLISHED. RELEASED FOR PUBLICATION  
 © COPYRIGHT BY TYCO ELECTRONICS CORPORATION. ALL RIGHTS RESERVED.

PART NUMBER	REV	FIRST USED
567364-1	R	854400-1
567364-2	R	565435-5
567364-3	R	354500-1
567364-4		
7-567364-7	M	

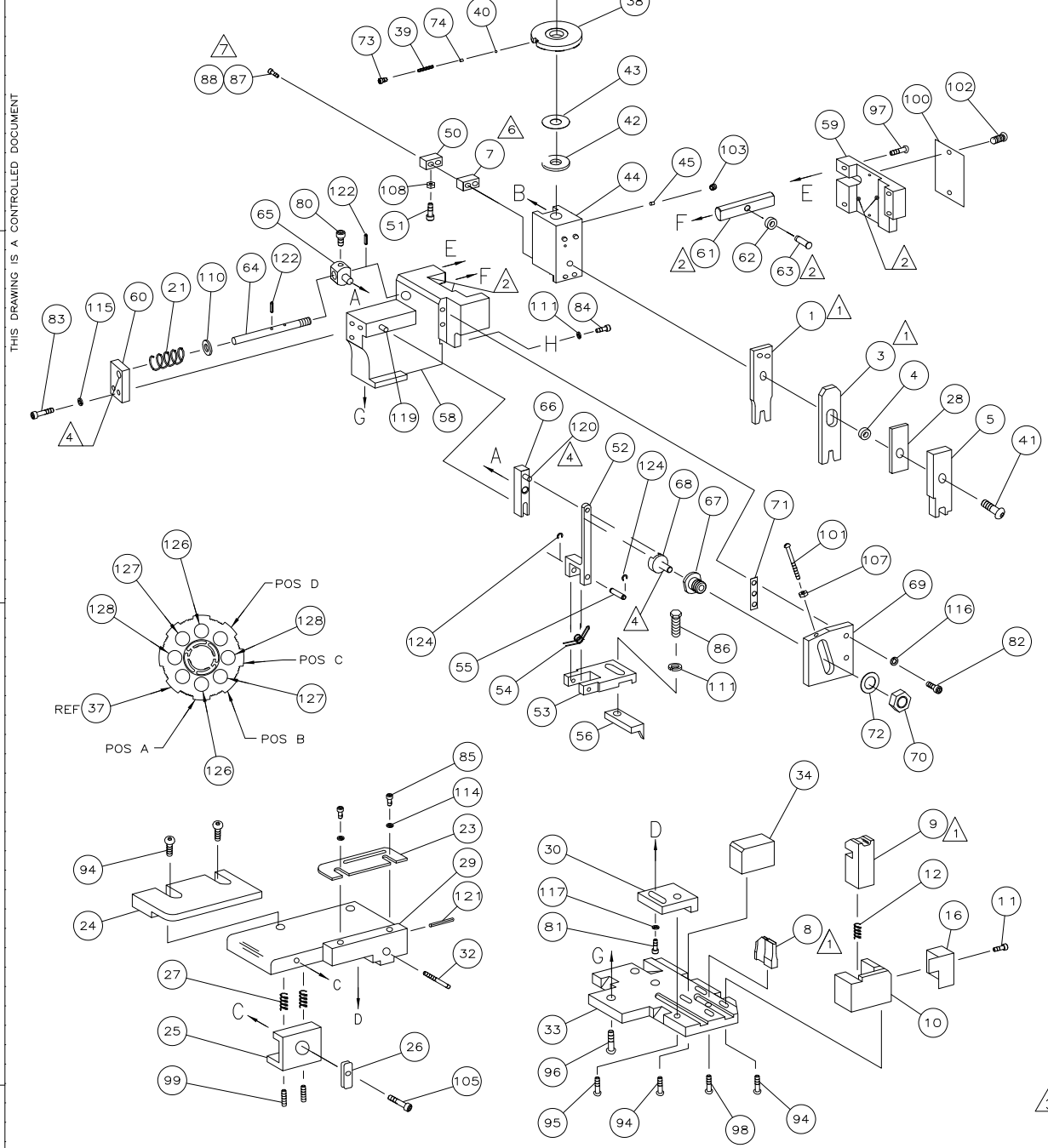
SEE DRAWING 567364-4



TERMINAL NAME: PIN BODY, TYPE III, SIZE 16		CRIMPING DATA			
PIN	SOCKET	PAD LTR	CRIMP HEIGHT	WIRE SIZE	
213603	66598	A	.068 ±.002 [1.73 ±.05mm]	14	
66597		B	.059 ±.002 (1.5 ±.05mm)	16	
1738388		C	.052 ±.002 [1.32 ±.05mm]	18	
		D	NOT USED		
CRIMP	SIZE	TYPE	RANGE		
WIRE	.090 [2.29mm]	F	18-14		
INSUL	.155 [3.94mm]	0	.110-.150		
WIRE STRIP LENGTH	TERM APPL SPEC	FEED	APPL INST	SET UP GAGE	LAYOUT
.141-.171	114-13131	.500	408-8040	458637-1	L1371

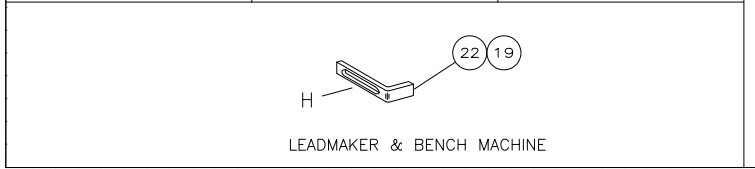
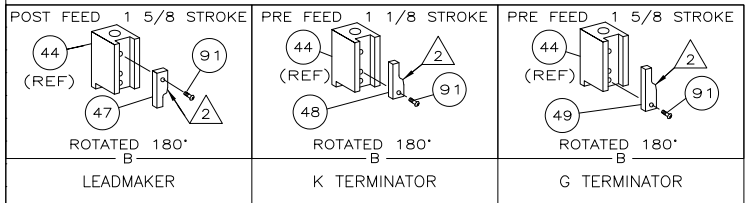
LOC	DIST	REVISIONS			
A	66	REV	DESCRIPTION	DATE	BY
		R1	ECR-10-004830	04MAR2010	YY TE

REV	DESCRIPTION	DATE	BY
-1	LEADMAKER	MECH POST FEED	-77
-2	BENCH MODEL K	MECH PRE FEED	
-3	BENCH MODEL G	MECH PRE FEED	



QTY	REV	DESCRIPTION	ITEM NO		
- 2	2	2	1-354779-8	PIN, WIRE DISC (.3080)C	129
- 2	2	2	354779-2	PIN, WIRE DISC (.3000)B	128
- 2	2	2	8-354778-3	PIN, WIRE DISC (.2910)A	127
- 1	1	1	986950-1	WASHER, FLAT PRECISION	125
- REF	REF	REF	21045-3	RING, RET "C" (Ø.187) FD FING PIN	124
- REF	REF	REF	5-21028-1	PIN, SLT SPR (Ø.125x.50) ADJ ROD	123
- 1	1	1	4-21028-0	PIN, SLT SPR (Ø.093x.75) ST GDE PL	122
- REF	REF	REF	1-21030-1	PIN, DOWEL (Ø.187x.50) LEVER	120
- REF	REF	REF	1-21030-6	PIN, DOWEL (Ø.187x1.25) HOUSING	119
- 1	1	1	21024-5	WASHER, LOCK (#10) ADJ BLOCK	118
- REF	REF	REF	21024-5	WASHER, LOCK (#10) ADJ PLATE	117
- REF	REF	REF	21024-5	WASHER, LOCK (#10) FEED GDE ROD	116
- 2	2	2	21024-2	WASHER, LOCK (#4) FRONT STP GUIDE	115
- 2	2	2	21024-4	WASHER, LOCK (#8) STRIPPER	114
- REF	REF	REF	21899-4	WASHER, FLAT (Ø5/16) SCREW ADJ	113
- 1	1	1	21018-5	NUT, HEX (NO.6) HOLDDOWN	112
- REF	REF	REF	21018-5	NUT, HEX (6-32) FEED ADJ	111
- 1	1	1	22353-8	SCR, SHLD (Ø.187x.25) DRAG LEVER	110
- 1	1	1	21009-2	SCR, SKT SET (1/4-20x.25 LW) RAM	109
- 2	2	2	21017-2	SCR, DRIVE (#2x.19) ID PLATE	108
- REF	REF	REF	6-23715-5	SCR, PAN HD (6-32x1.50) FEED ADJ	107
- 1	1	1	461264-1	PLATE, IDENTIFICATION	106
- 2	2	2	5-21006-6	SCR, SET (10-32x.75) DRAG	105
- 1	1	1	22733-8	SCR, BHC (8-32x.38 LW) ANVIL	104
- REF	REF	REF	2-21002-9	SCR, BHC (10-32x.75) CAP	103
- REF	REF	REF	2-22733-8	SCR, BHC (1/4-20x.62) HOUSING	102
- REF	REF	REF	2-21002-7	SCR, BHC (10-32x.50) SG ADJ BLOCK	101
- 6	6	6	2-21002-2	SCR, BHC (8-32x.50) SHEAR	100
- 1	1	1	1-21002-7	SCR, BHC (6-32x.38) CAM	99
- REF	REF	REF	2-21002-2	SCR, BHC (8-32x.50)	98
- 2	2	2	8-21002-9	SCR, BHC (8-32x 1.00)	97
- 1	1	1	2-22603-0	SCR, HEX HD (8-32x.31) FEED FINGER	96
- 2	2	2	1-21000-3	SCR, SHC (4-40x.25) F ST GUIDE	95
- 1	1	1	2-21000-7	SCR, SHC (8-32x.50) STRIPPER	94
- REF	REF	REF	3-21000-7	SCR, SHC (10-32x.75) FEED ROD GD	93
- REF	REF	REF	3-21000-6	SCR, SHC (10-32x.62) FD ADJ BLK	92
- 1	1	1	3-21000-4	SCR, SHC (10-32x.38) SG ADJ BL	91
- REF	REF	REF	3-21000-4	SCR, SHC (10-32x.38) PIVOT BLK	90
- REF	REF	REF	455749-1	GUARD, WINDOW	89
- REF	REF	REF	679532-1	INSERT, GUARD	88
- 1	1	1	690603-1	SPRING, ASSIST	87
- 1	1	1	23030-1	SCR, SHC (6-32x.25 SL) INS DISC	86
- REF	REF	REF	458109-1	WASHER, SPECIAL	85
- REF	REF	REF	690517-1	SPACER	84
-77	-3	-2	-1	U/M	83

QTY	REV	DESCRIPTION	ITEM NO		
- 1	1	1	458537-2	PAWL, FEED	83
- REF	REF	REF	240624-1	PIN, FEED FINGER	82
- REF	REF	REF	691499-1	SPRING, FEED FINGER	81
- REF	REF	REF	690541-1	HOLDER, FEED FINGER	80
- REF	REF	REF	455679-1	LEVER, TERMINAL FEED ARM	79
- 1	1	1	811242-2	BUMPER, HOLDDOWN	78
- 1	1	1	690753-1	SPACER, TONKER	77
- 1	1	1	690602-6	CAM, PRE-FEED 1 5/8 ST	76
- 1	1	1	690602-5	CAM, PRE-FEED 1 1/8 ST	75
- 1	1	1	690501-4	CAM, POST-FEED 1 5/8 ST	74
- 1	1	1	459456-1	APPLICATOR, BASIC (SUBASSY)	73
- 1	1	1	690191-1	PLUG, NYLON	72
- 1	1	1	455673-1	RAM	71
- 1	1	1	690125-1	WASHER, LAMINATED	70
- 1	1	1	690124-1	WASHER, RAM	69
- 1	1	1	7-21002-9	BOLT, CRIMPER (5/16x1.00)	68
- 1	1	1	23241-6	BALL, STEEL	67
- 1	1	1	690170-1	SPRING, COMPRESSION	66
- 1	1	1	690142-1	DISC, INSULATION	65
- 1	1	1	354777-1	WIRE DISC, PLASTIC	64
- 1	1	1	22480-5	WASHER, SPRING	63
- 1	1	1	690212-1	POST, RAM	62
- 1	1	1	690786-6	SUPPORT, TERMINAL	61
- REF	REF	REF	455675-1	PLATE, BASE	60
- 1	1	1	690432-3	SCREW, ADJUSTMENT	59
- REF	REF	REF	455689-1	BLOCK, STRIP GUIDE ADJ	58
- 1	1	1	458144-1	PLATE, STRIP GUIDE	57
- 1	1	1	1-455888-0	SPACER, FRONT SHEAR DEP	56
- 2	2	2	1-22284-0	SPRING, DRAG	55
- 1	1	1	356835-1	LEVER, DRAG RELEASE	54
- 1	1	1	240792-1	DRAG, TERMINAL	53
- 1	1	1	7-690504-8	GUIDE, STRIP (REAR)	52
- 1	1	1	690438-1	GUIDE, STRIP (FRONT)	51
- 1	1	1	690472-2	STRIPPER	50
- REF	REF	REF	4-22284-9	SPRING, FEED RETURN	49
- 1	1	1	691353-1	STRIPPER	48
- 1	1	1	691667-1	GUARD, CHIP (FRONT)	47
- 1	1	1	3-22280-3	SPRING, SHEAR	46
- 1	1	1	690461-1	STOP, SHEAR	45
- 1	1	1	690459-1	HOLDER, SHEAR (FRONT)	44
- 1	1	1	462006-1	SHEAR, FLOAT (FRONT)	43
- 1	1	1	9-803653-4	ANVIL	42
- 1	1	1	2-240641-6	SPACER, SHEAR BLADE	41
- 1	1	1	2-455889-0	DEPRESSOR, SHEAR (FRONT)	40
- 1	1	1	238011-4	SPACER, BLOCK CRIMPER	39
- 1	1	1	7-456135-2	CRIMPER, INSULATION	38
- 1	1	1	4-456406-1	CRIMPER, WIRE	37



- 1 RECOMMENDED SPARE PARTS.
- 2 GREASE LIGHTLY.
- 3 GUARD MUST BE IN PLACE WHEN OPERATING APPLICATOR IN A BENCH MACHINE.
- 4 LUBRICATE DAILY USING NO. 20 MACHINE OIL.
- 5. ITEMS WITH QTY OF REF SPECIFIED (EXCEPT ITEMS 78 AND 79) ARE USED ON ITEM 46.

- △ USE WHEN RUNNING PINS. NOT REQUIRED FOR SOCKETS.
- △ REPLACE ITEM 87 WITH ITEM 88 WHEN RUNNING SOCKETS.