

4

3

2

1


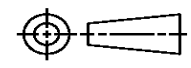
THIS DRAWING IS UNPUBLISHED. RELEASED FOR PUBLICATION
© COPYRIGHT ALL RIGHTS RESERVED.

LOC		DIST		REVISIONS		
P	LTR	DESCRIPTION	DATE	DWN	APVD	
	V1	ECR-14-010821	18JUL2014	GK	HMR	

REPLACED BY OCEAN STYLE APPLICATOR PART NUMBER 2150079-2

FOR REPLACEMENT PARTS FOR APPLICATOR 466093 REFER TO ADDITIONAL PAGE(S). SPARE PARTS KIT (IF LISTED) WILL REMAIN AVAILABLE.

THE REPLACEMENT OCEAN STYLE APPLICATOR HAS THE SAME TERMINATOR/PRESS INTERFACE AS APPLICATOR 466093

THIS DRAWING IS A CONTROLLED DOCUMENT.		DWN	GOPALAKRISHNA HV			TE Connectivity			
DIMENSIONS:		CHK	RAGHAVENDRA			NAME			
		TOLERANCES UNLESS OTHERWISE SPECIFIED:		APVD	END FEED HDM APPLICATOR				
		0 PLC ±	1 PLC ±	RAGHAVENDRA		PRODUCT SPEC			
MATERIAL		2 PLC ±	3 PLC ±	APPLICATION SPEC		SIZE	CAGE CODE	DRAWING NO	RESTRICTED TO
FINISH		4 PLC ±	ANGLES ±	WEIGHT		A3		©- 466093	
				CUSTOMER ACCESSIBLE PRODUCTION DRAWING		SCALE	SHEET 1 OF 3	REV V1	

DRAWING MADE IN THIRD ANGLE PROJECTION

466093 466093

/home/us016926/DMEcmd

PART NUMBER	REV	FIRST USED	LEADMAKER	MECH POST FEED
466093-1	V	854400-1	BENCH MODEL K	MECH-POST FEED
466093-2	V	565435-5	BENCH MODEL K	MECH-POST FEED
466093-3	N	354500-1	BENCH MODEL G	MECH-POST FEED
466093-4	V	854400-1	LEADMAKER	MECH-POST FEED

SUPSD BY -1

FOR -1, -2

TERMINAL NAME:	
SHUR-PLUG™ RECAPTACLE	△
60798	
60799	
TERM APPL SPEC 114-2017	

CRIMPING DATA			
PAD LTR	CRIMP HEIGHT	WIRE SIZE	
A	.077 ±.002	14	
B	.067 ±.002	16	
C	.061 ±.002	18	
D	NOT USED		
CRIMP	SIZE	TYPE	RANGE
WIRE	.100	F	18-14
INSUL	.140	F	.090-.125
FEED	APPL INST	SET UP GAGE	LAYOUT
.895	408-8039	458638-1	94
WIRE STRIP LENGTH -			

FOR -4

CRIMPING DATA			
PAD LTR	CRIMP HEIGHT	WIRE SIZE	
A	.071 ±.002	14	
B	.062 ±.002	16	
C	.056 ±.002	18	
D	NOT USED		
CRIMP	SIZE	TYPE	RANGE
WIRE	.110	F	18-14
INSUL	.140	F	.090-.125
FEED	APPL INST	SET UP GAGE	LAYOUT
.895	408-8039	458638-1	94
WIRE STRIP LENGTH -			

- 1 RECOMMENDED SPARE PARTS.
- 2 GREASE LIGHTLY.
- 3 GUARD MUST BE IN PLACE WHEN OPERATING APPLICATOR IN A BENCH MACHINE.
- 4 LUBRICATE DAILY USING NO. 20 MACHINE OIL.
- 5 ADJUST FEED FINGER TO FEED OFF OF RECEPTACLE.
- 6 LUBRICATOR REQUIRED WITH NICKEL PLATED TERMINALS.

QTY REQD PER ASSY	REV	DESCRIPTION	ITEM NO					
2	-	1-354779-0	133					
2	-	9-354778-7	131					
2	-	7-354778-9	130					
-	2	1-354779-7	129					
-	2	354779-3	128					
-	2	8-354778-3	127					
1	1	986950-1	126					
2	2	21045-3	125					
2	2	1-21046-6	124					
1	1	1-21030-7	123					
1	1	1-21030-1	122					
1	1	1-21030-1	121					
1	1	1-21030-1	120					
1	1	1-21030-1	119					
1	1	1-21030-1	118					
1	1	1-21030-1	117					
1	1	1-21030-1	116					
1	1	1-21030-1	115					
2	2	18028-2	114					
6	6	21024-5	113					
7	7	21024-4	112					
7	7	21024-4	111					
2	2	21024-4	110					
2	2	22593-1	109					
2	2	21018-4	108					
1	1	21018-5	107					
2	2	21022-2	106					
2	2	9-21000-9	105					
1	1	3-21081-3	104					
2	2	2-21006-6	103					
1	1	21009-2	102					
2	2	21017-2	101					
1	1	1-21002-7	100					
1	1	461264-1	99					
1	1	6-23715-5	98					
2	2	994991-5	97					
2	2	2-21002-2	96					
4	4	2-21002-9	95					
1	1	22733-8	94					
4	4	3-21002-3	93					
3	3	2-22733-8	92					
2	2	2-22733-8	91					
2	2	2-21000-8	90					
3	3	2-21000-6	89					
2	2	2-21000-9	88					
2	2	3-21000-7	87					
2	2	3-21000-6	86					
1	1	3-21000-4	85					
2	2	3-21000-8	84					
-	1	455750-4	83					
-	REF	679532-1	82					
-	1	465184-9	81					
-	1	454406-1	80					
1	1	690603-1	79					
1	1	23030-1	78					
1	1	458109-1	77					
1	1	690517-1	76					
-4	-3	-2	-1	U/M	DWG SIZE	PART NO	DESCRIPTION	ITEM NO

QTY REQD PER ASSY	REV	DESCRIPTION	ITEM NO					
1	1	22594-8	70					
1	1	240628-1	69					
1	1	240626-1	68					
1	1	240633-1	67					
1	1	455680-1	66					
1	1	240629-1	65					
1	1	1804311-1	64					
1	1	240659-3	63					
1	1	240658-1	62					
1	1	454398-1	61					
1	1	454220-1	60					
1	1	453736-1	59					
1	1	1804299-1	58					
1	1	240624-1	57					
1	1	240638-1	56					
1	1	240635-2	55					
1	1	240634-3	54					
1	1	1804310-1	53					
1	1	1804303-1	52					
1	1	1804300-1	51					
-	1	690501-3	50					
1	1	690501-4	49					
1	1	690191-1	48					
1	1	455674-1	47					
1	1	690125-1	46					
1	1	690124-1	45					
1	1	7-21002-9	44					
1	1	23241-6	43					
1	1	690170-1	42					
1	1	690142-1	41					
1	1	354777-1	40					
1	1	22480-5	39					
1	1	690212-1	38					
1	1	690212-1	37					
1	1	690212-1	36					
1	1	690212-1	35					
1	1	690212-1	34					
1	1	690212-1	33					
1	1	690212-1	32					
1	1	690212-1	31					
1	1	690212-1	30					
1	1	690212-1	29					
1	1	690212-1	28					
1	1	690212-1	27					
1	1	690212-1	26					
2	2	22354-8	25					
1	1	455678-1	24					
1	1	240825-3	23					
2	2	4-22281-1	22					
1	1	454177-1	21					
1	1	454177-1	20					
2	2	454204-3	19					
1	1	1804305-2	18					
1	1	4-22284-9	17					
1	1	4-240693-2	16					
1	1	456408-3	15					
1	1	690481-2	14					
1	1	23846-1	13					
1	1	240644-3	12					
2	2	1-240645-1	11					
1	1	240642-4	10					
-	1	3-240693-5	9					
1	1	2-240651-8	8					
1	1	455892-5	7					
1	1	2-240641-5	6					
1	1	238009-1	5					
1	1	1-456134-4	4					
1	1	455888-7	3					
-	1	456407-5	2					
-4	-3	-2	-1	U/M	DWG SIZE	PART NO	DESCRIPTION	ITEM NO

THIS DRAWING IS A CONTROLLED DOCUMENT.

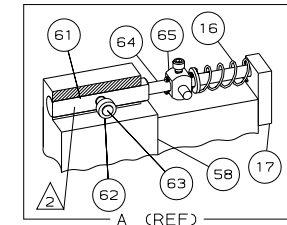
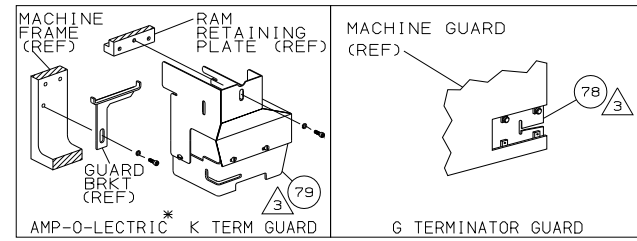
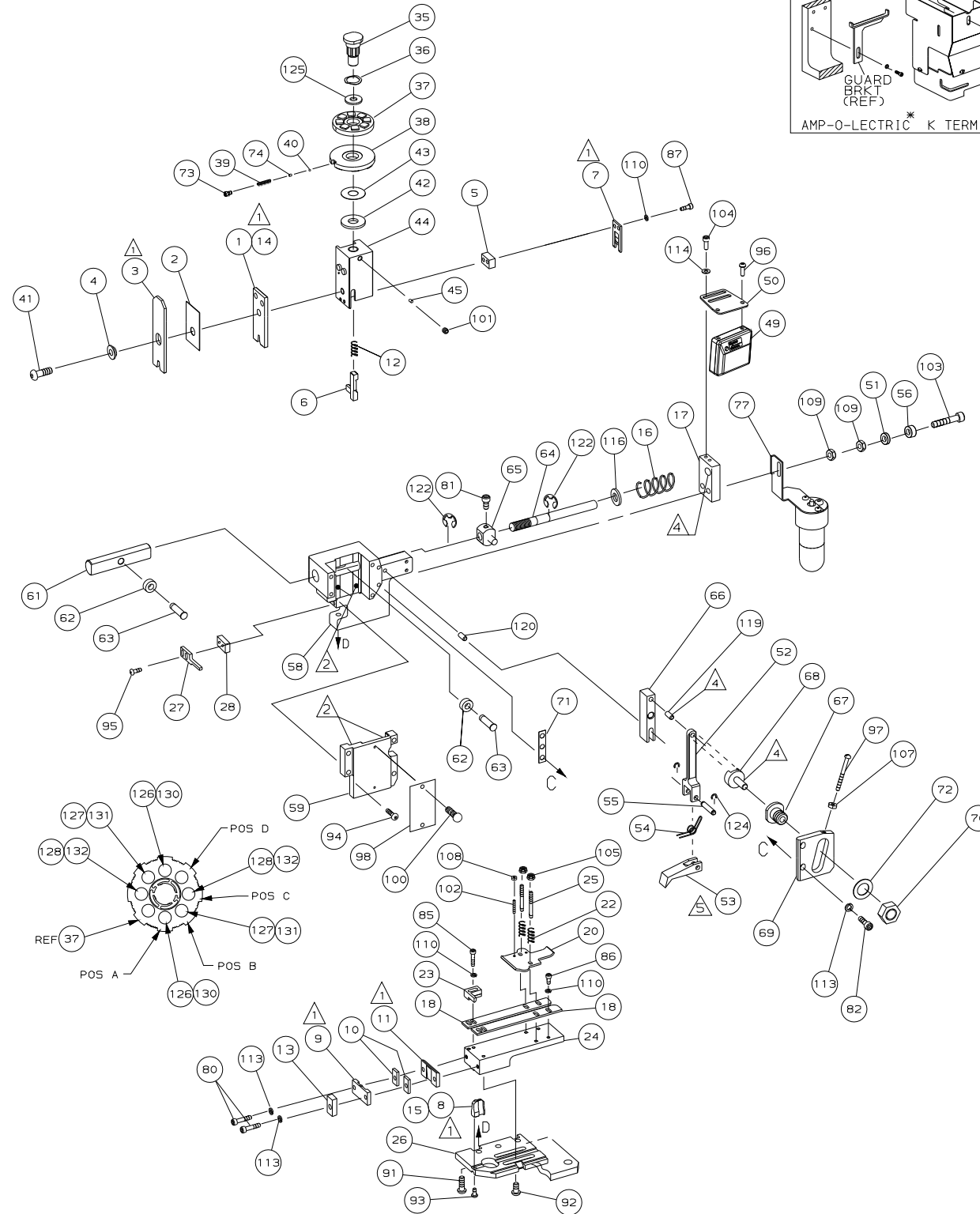
APRIL 2000 RELEASED FOR PUBLICATION BY AMP INCORPORATED. ALL RIGHTS RESERVED.

LOC A DIST 66

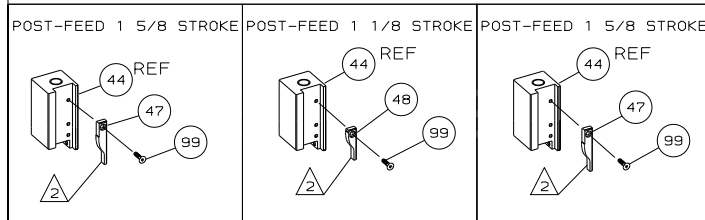
DRAWING MADE IN THIRD ANGLE PROJECTION

466093 466093

/home/us016926/DMTECmod



* Trademark of AMP Incorporated



T TERMINATING UNIT LEADMAKER	K TERMINATING UNIT BENCH MACHINE	G TERMINATING UNIT
------------------------------	----------------------------------	--------------------

LOC A
DIST 66

AMP 1756 REV 3-92 11-JAN-06 12:32:52 us016926

DWG SIZE	PART NO	DESCRIPTION	ITEM NO
		REVISION OF EACH ASSY NO (WHEN BLANK, USE DWG REVISION)	
QTY REQD PER ASSY			
PARTS LIST			
MATL	HT TR	FIN	
DIMENSIONS IN INCHES. DO NOT SCALE PRINT. TOLERANCES UNLESS OTHERWISE SPECIFIED.			
DR	3/10/94	APP	3-10-94
D. SALTZER		E. KOOTTE	
CHK	3-10-94	REL	5/17/94
C. ERISMAN		B. MORGAN	
NAME: END FEED HDM APPLICATOR MINI APPL			
SCALE	DWG NO	466093	SHEET 2 of 2
00779 CUSTOMER AND ASSEMBLY DRAWING 1			