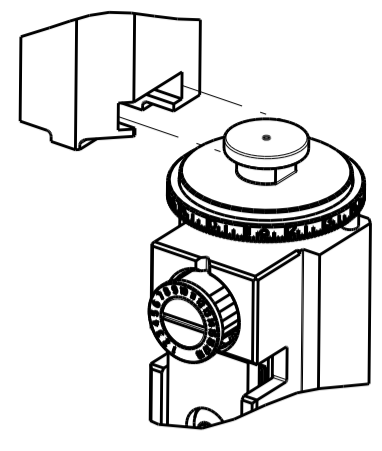


PART NUMBER	REVISION	DESCRIPTION	FEED TYPE
4150016-1	A	FINE CRIMP HEIGHT ADJUST	MECHANICAL
4150016-2	A	FINE CRIMP HEIGHT ADJUST	PNEUMATIC
7-4150016-1	A	MECHANICAL AND CRIMP TOOLING KIT	MECHANICAL
7-4150016-2	A	PNEUMATIC AND CRIMP TOOLING KIT	PNEUMATIC
7-4150016-7	A	CRIMP TOOLING KIT	-

ATLANTIC VERSION TERMINATOR INTERFACE ADAPTER



APPLICATOR DATA		
CRIMP	SIZE	TYPE
WIRE	4.57 mm [.180]	F
INSUL	-	-

APPL INSTRUCTIONS
408-35043

TERMINAL DATA: TE TERMINAL		TE CRIMP SPECIFICATION	
TERMINAL NAME: TERMINAL, SPADE			
WIRE STRIP LENGTH		INSULATION DIAMETER RANGE	
5.95-6.75 mm [.234-.266 IN]		∅	
TERMINAL APPLICATION SPECIFICATION	114-2084	-	-
TERMINALS APPLIED			
TE TERMINAL	TE TERMINAL	TE TERMINAL	TE TERMINAL
41495	40891	42113-2	42113-3

WIRE SIZE	CRIMP HEIGHT mm [INCH]	CRIMP HEIGHT REFERENCE SETTING
10 AWG	3.05 +/- 0.05 [.120 +/- .002]	6.8
12 AWG	2.74 +/- 0.05 [.108 +/- .002]	10.3

- RECOMMENDED SPARE PARTS
- REFER TO SUPPLIED INSTRUCTION SHEET FOR CLEANING, LUBRICATION AND STORAGE OF APPLICATOR.
- CRIMP HEIGHT REFERENCE SETTING WAS THE SETTING USED WHEN THE APPLICATOR WAS QUALIFIED AT THE FACTORY. ADJUSTMENT MAY BE NECESSARY WHEN RUNNING APPLICATOR IN THE FIELD.
- TERMINAL LUBRICANT IS RECOMMENDED.
- 5. UNLESS SPECIFIED OTHERWISE TORQUE VALUES SHALL BE USED PER DOCUMENT, 101-35000.
- THIS APPLICATOR BENDS A FLANGE ON THE END OF TERMINAL.

***WARNING**
ON INSTALLATION, SET WIRE DISC TO CRIMP HEIGHT REFERENCE SETTING FOR LARGEST WIRE SIZE. CRIMP HEIGHT REFERENCE SETTINGS GREATER THAN THE VALUE SHOWN MAY CAUSE DAMAGE TO THE CRIMP TOOLING, REFER TO THE INSTRUCTION SHEET FOR PROPER SETUP AND ADJUSTMENTS.

LOC	DIST	REVISIONS			
A	66	REV	DATE	BY	APPV
		A	RELEASED	24JUN2019	FZ TE

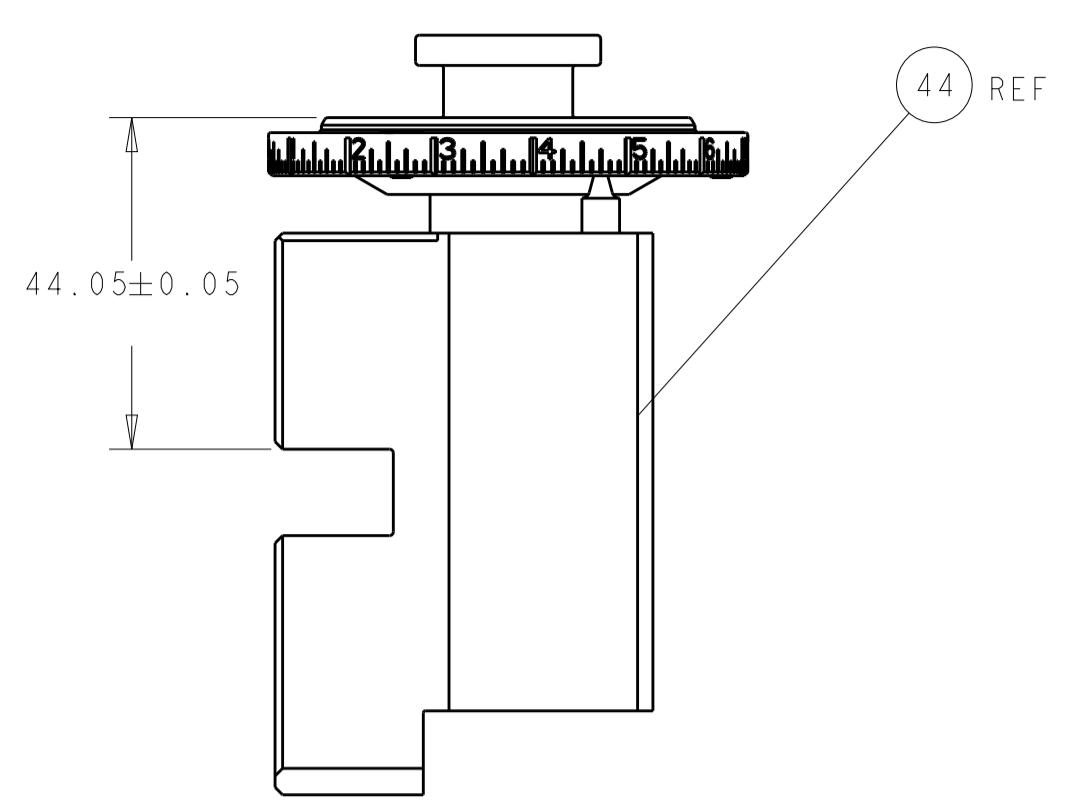
-	1	-	1	-	2119640-1	PUSH ROD, AIR FEED	250	
-	1	-	1	-	1803259-1	BUSHING, FLANGED	249	
-	1	-	1	-	2119641-1	FEED CAM, AIR FEED	248	
-	-	1	-	1	2119580-1	MECHANICAL FEED ASSEMBLY	239	
-	1	-	1	-	2063440-1	AIR FEED MODULE	238	
-	1	1	1	1	1-18028-0	WASHER, FLAT, REG M8	192	
-	2	-	2	-	21045-3	RING, RETAIN, EXTERN, 3/16 CRESCENT	172	
-	REF	REF	REF	REF	994970-2	COUNTER, MAGNETIC	164	
-	1	-	1	-	240638-1	SPRING, FEED FINGER	163	
-	1	-	1	-	3-23627-7	PIN, RETAIN, GRVD, 3/16 X .854	137	
-	1	1	1	1	2119955-2	ASSY, LUBRICATOR, END FEED	84	
-	1	1	1	1	455888-9	SPACER, CRIMPER	82	
-	1	1	1	1	1803607-2	DOCUMENTATION PACKAGE	71	
-	2	2	2	2	2-18032-2	SCR, SET, FLT PNT, M3 X 10.0	70	
-	1	1	1	1	2119740-1	TAG, IDENTIFICATION	67	
-	2	2	2	2	2168078-1	SCREW, DRIVE, RH, RoHS, 2 x .188	66	
-	1	1	1	1	2168083-2	SCR, SKT HD CAP, RoHS, M4 X 8.0	60	
-	-	1	-	1	5-18022-5	SCR, HEX HD CAP, M4 X 6.0	59	
-	-	1	-	1	2063961-3	FEED FINGER	58	
-	4	4	4	4	2168400-1	SHCS, LOW HEAD, RoHS, M4 X 12	57	
-	2	2	2	2	2168083-3	SCR, SKT HD CAP, RoHS, M4 X 12.0	56	
-	2	2	2	2	5018030-1	NUT, HEX, REG, RoHS, M3	54	
-	2	2	2	2	986965-8	NUT, LOCK, HEX, TORQUE (M4)	53	
-	1	-	1	-	2119792-9	PAWL, EF, AIR	51	
-	1	2	1	2	18023-9	SCR, SKT HD CAP M4 X 6.0	49	
-	-	1	-	1	2119652-1	FEED CAM, PRE FEED	48	
-	-	1	-	1	2119653-1	FEED CAM, POST FEED	47	
-	1	1	1	1	2119655-5	APPLICATOR BASIC ASSEMBLY, EF	46	
-	1	1	1	1	1803517-1	RAM ASSEMBLY, EF ATLANTIC	44	
-	1	1	1	1	1803602-1	SCR, BHSC, RoHS (M8 X 25)	41	
-	8	8	8	8	1-18028-2	WASHER, FLAT, REG M4	33	
-	2	2	2	2	2168083-8	SCR, SKT HD CAP, RoHS, M4 X 16	31	
-	2	2	2	2	2168083-2	SCR, SKT HD CAP, RoHS, M4 X 8.0	29	
-	1	1	1	1	240639-1	STRIPPER (MACHINING)	27	
-	2	2	2	2	1-2168083-5	SCR, SKT HD CAP, RoHS, M4 X 30	25	
-	1	1	1	1	1752371-2	PLATE, STRIP GUIDE	24	
-	2	2	2	2	22281-8	SPRING, COMPRESSION	22	
-	1	1	1	1	1803292-4	DRAG	20	
-	1	1	1	1	7-1901696-9	STRIP GUIDE, REAR	19	
-	1	1	1	1	8-1901695-0	STRIP GUIDE, FRONT	18	
-	4	4	4	4	1-2079383-1	SCR, BHSC, RoHS (M6 X 12)	17	
-	1	1	1	1	2-240641-8	SPACER	16	
-	1	1	1	1	690783-9	PLATE, SPACER	14	
-	1	1	1	1	1-690759-3	FORMING (FLANGING) TOOL	12	
-	1	1	1	1	1-240644-1	PLATE, REAR SHEAR	11	
-	2	2	2	2	1-240645-2	SPACER, SHEAR PLATE	10	
-	1	1	1	1	690784-1	FRONT SHEAR PLATE	9	
-	1	2	2	1	1	4-1803002-4	ANVIL, COMBINATION, END FEED	8
-	1	1	1	1	2-240651-1	BLADE, SLUG	7	
-	-	-	-	-	-	-	6	
-	1	1	1	1	3-240641-7	SPACER	5	
-	-	-	-	-	-	-	4	
-	-	-	-	-	-	-	3	
-	-	-	-	-	-	-	2	
-	1	2	2	1	1	1-456412-0	CRIMPER, WIRE .180 F PREMIUM	1
-	77	72	71	2	1	PART NO	DESCRIPTION	ITEM NO

ATLANTIC VERSION
Shown on sheets 1 of 4 & 2 of 4
(Pacific version shown on sheets 3 of 4 & 4 of 4)

DIMENSIONS:		TOLERANCES UNLESS OTHERWISE SPECIFIED:		MATERIAL:		FINISH:	
mm	0 PLC ±	1 PLC ±	2 PLC ±	3 PLC ±	4 PLC ±	ANGLES ±	

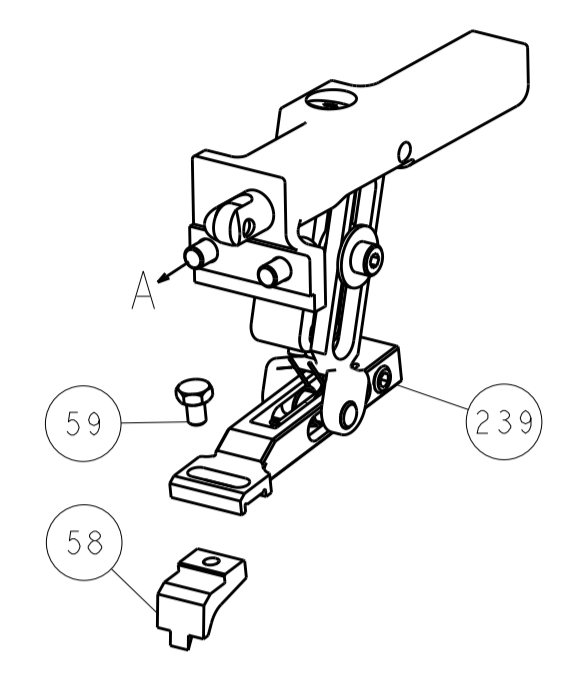
OWN	F. ZHANG	24JUN2019	TE Connectivity
CHK	T. ELBIN	24JUN2019	Harrisburg, PA 17105-3608
APVD	T. ELBIN	24JUN2019	
NAME	Ocean End Feed Applicator		
PRODUCT SPEC			
APPLICATION SPEC			
SIZE	CAGE CODE	DRAWING NO	RESTRICTED TO
A1	00779	4150016	
Customer Accessible Production Drawing			SCALE 1:1 SHEET 1 OF 4 REV A

LOC		DIST		REVISIONS			
A	66	P	LTM	DESCRIPTION	DATE	OWN	APVD
		-		SEE SHEET 1			

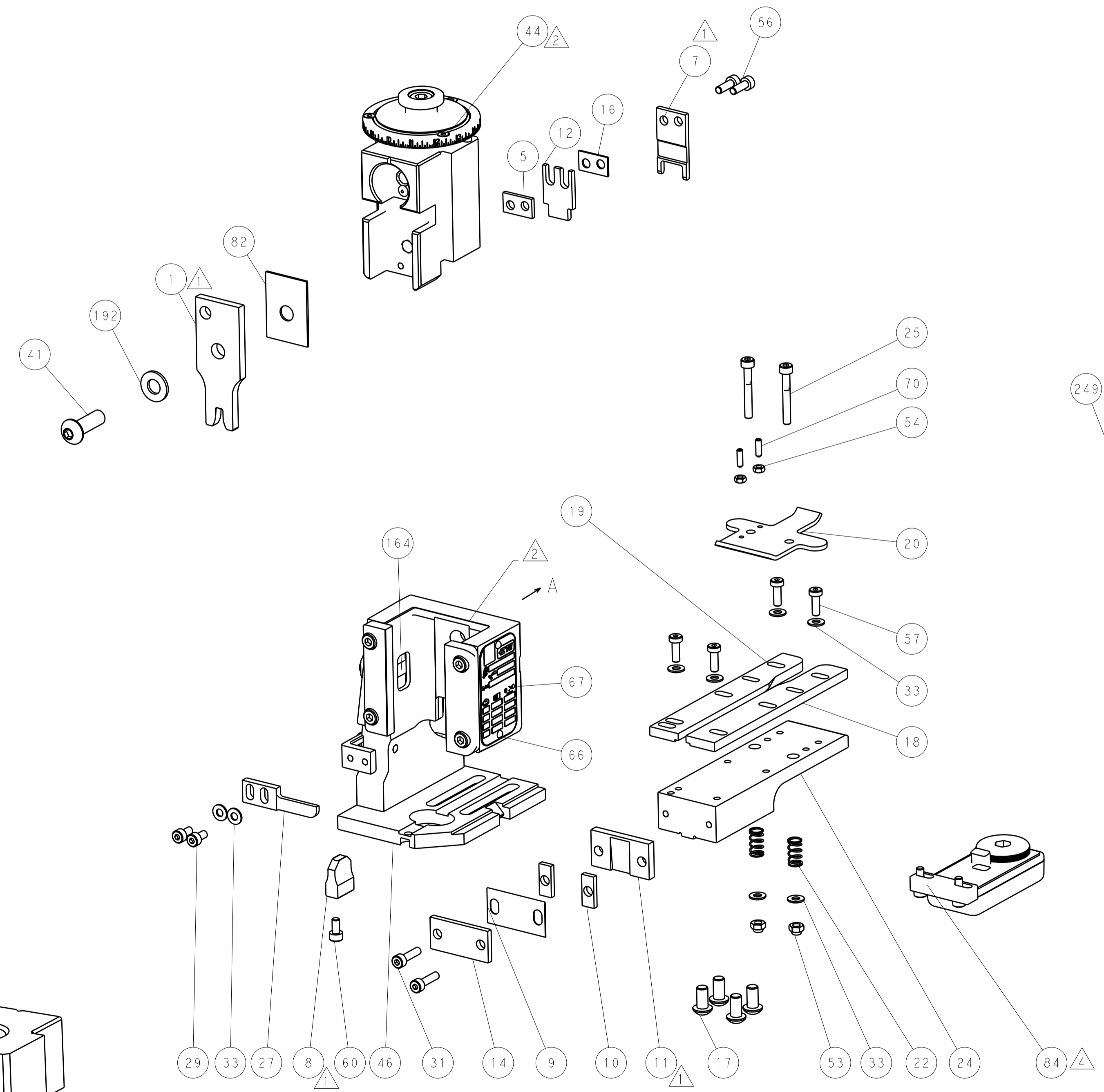
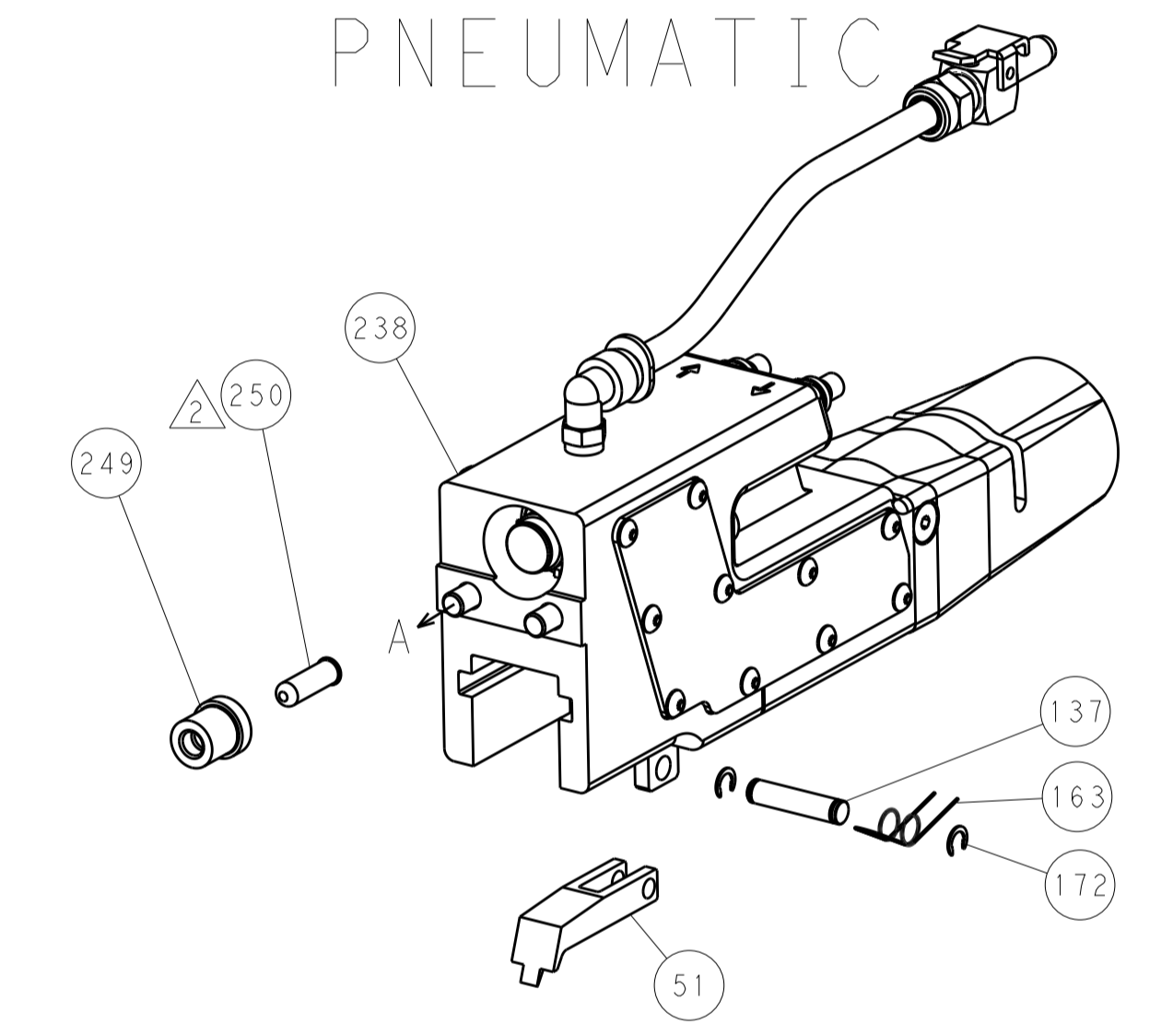


RAM SET-UP

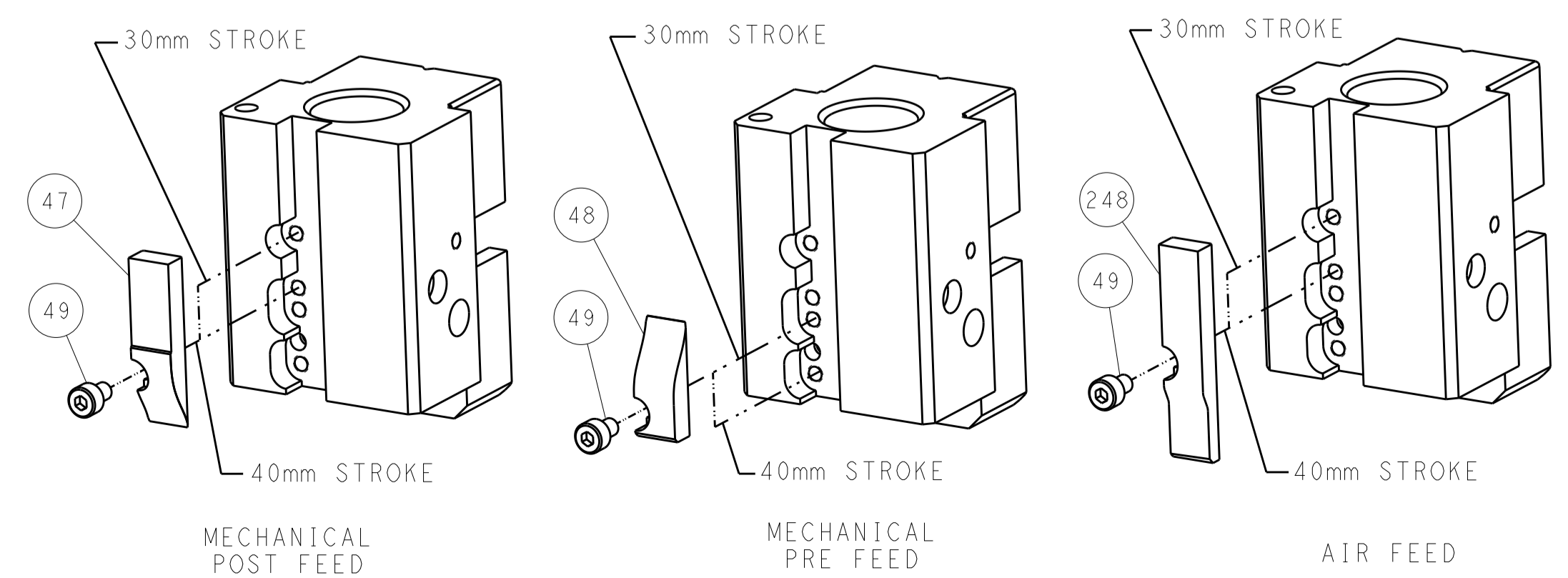
FEED TYPE
MECHANICAL



PNEUMATIC



CAM POSITIONS

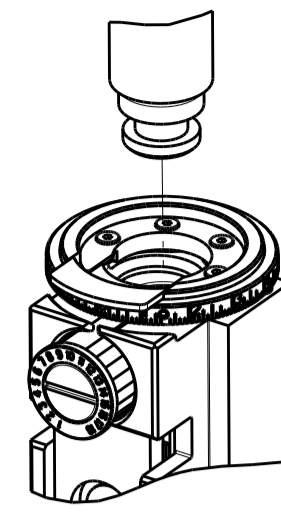


ATLANTIC VERSION
 Shown on sheets 1 of 4 & 2 of 4
 (Pacific version shown on sheets 3 of 4 & 4 of 4)

DIMENSIONS:		TOLERANCES UNLESS OTHERWISE SPECIFIED:		OWN: F. ZHANG 24JUN2019		TE Connectivity	
mm		0 PLC ±		CHK: T. ELBIN 24JUN2019		Harrisburg, PA 17105-3608	
Ø		1 PLC ±		APVD: T. ELBIN 24JUN2019		NAME: Ocean End Feed Applicator	
H		2 PLC ±		PRODUCT SPEC		SIZE: CAGE CODE DRAWING NO	
L		3 PLC ±		APPLICATION SPEC		A11 00779 ©=4150016	
R		4 PLC ±		WEIGHT		RESTRICTED TO	
ANGLES		FINISH		Customer Accessible Production Drawing		SCALE: 1:1 SHEET 2 OF 4 REV A	

PART NUMBER	REVISION	DESCRIPTION	FEED TYPE
2-4150016-1	A	FINE CRIMP HEIGHT ADJUST	MECHANICAL
2-4150016-2	A	FINE CRIMP HEIGHT ADJUST	PNEUMATIC
7-4150016-7	A	CRIMP TOOLING KIT	-

PACIFIC VERSION TERMINATOR
INTERFACE ADAPTER



APPLICATOR DATA		
CRIMP	SIZE	TYPE
WIRE	4.57 mm [.180]	F
INSUL	-	-
APPL INSTRUCTIONS 408-35043		

TERMINAL DATA: TE TERMINAL		TE CRIMP SPECIFICATION	
TERMINAL NAME: TERMINAL, SPADE			
WIRE STRIP LENGTH 5.95-6.75 mm [.234-.266 IN]		INSULATION DIAMETER RANGE Ø	
TERMINAL APPLICATION SPECIFICATION	114-2084	-	-
TERMINALS APPLIED			
TE TERMINAL	TE TERMINAL	TE TERMINAL	TE TERMINAL
41495	40891	42113-2	42113-3

WIRE SIZE	CRIMP HEIGHT mm [INCH]	CRIMP HEIGHT REFERENCE SETTING
10 AWG	3.05 +/- 0.05 [.120 +/- .002]	6.8
12 AWG	2.74 +/- 0.05 [.108 +/- .002]	10.3

- 1. RECOMMENDED SPARE PARTS
- 2. REFER TO SUPPLIED INSTRUCTION SHEET FOR CLEANING, LUBRICATION AND STORAGE OF APPLICATOR.
- 3. CRIMP HEIGHT REFERENCE SETTING WAS THE SETTING USED WHEN THE APPLICATOR WAS QUALIFIED AT THE FACTORY. ADJUSTMENT MAY BE NECESSARY WHEN RUNNING APPLICATOR IN THE FIELD.
- 4. TERMINAL LUBRICANT IS RECOMMENDED.
- 5. UNLESS SPECIFIED OTHERWISE TORQUE VALUES SHALL BE USED PER DOCUMENT, 101-35000.
- 6. THIS APPLICATOR BENDS A FLANGE ON THE END OF TERMINAL.

***WARNING**
ON INSTALLATION, SET WIRE DISC TO CRIMP HEIGHT REFERENCE SETTING FOR LARGEST WIRE SIZE. CRIMP HEIGHT REFERENCE SETTINGS GREATER THAN THE VALUE SHOWN MAY CAUSE DAMAGE TO THE CRIMP TOOLING, REFER TO THE INSTRUCTION SHEET FOR PROPER SETUP AND ADJUSTMENTS.

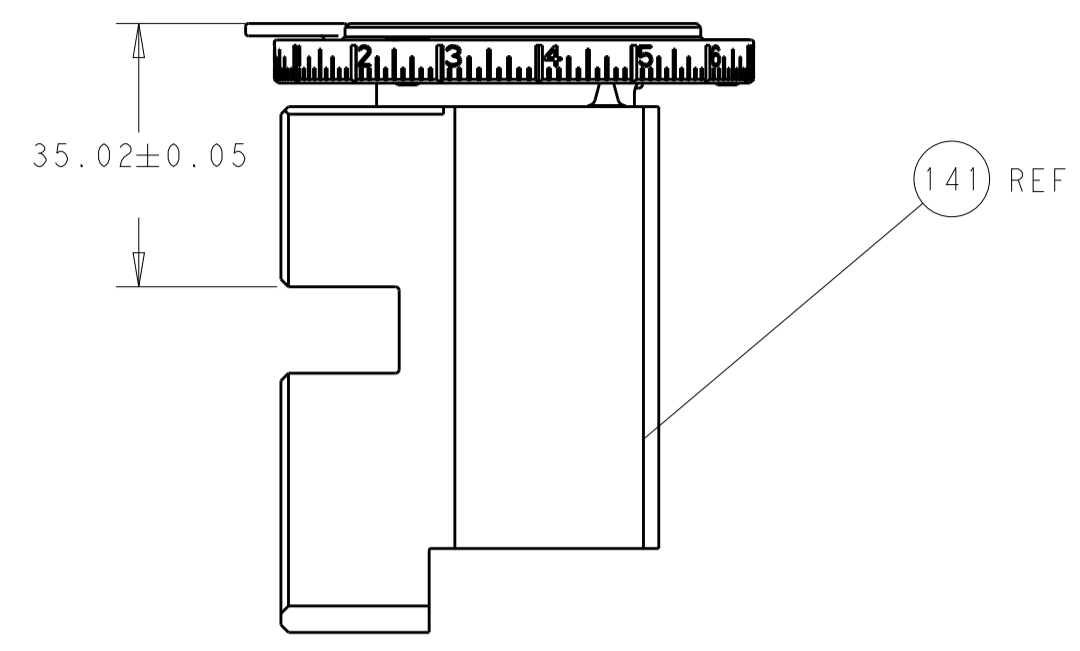
LOC	DIST	REV	DATE	BY	APPD
A	66	-	-	-	-

REV	DATE	BY	APPD	DESCRIPTION	QTY	
-	1	-	-	2119640-1	PUSH ROD, AIR FEED	250
-	1	-	-	1803259-1	BUSHING, FLANGED	249
-	-	1	-	2119580-1	MECHANICAL FEED ASSEMBLY	239
-	1	-	-	2063440-1	AIR FEED MODULE	238
-	1	1	-	1-18028-0	WASHER, FLAT, REG M8	192
-	4	4	-	2079383-9	SCR, BHSC, RoHS (M6 X 20)	186
-	2	-	-	21045-3	RING, RETAIN, EXTERN, 3/16 CRESCENT	172
-	REFREF	-	-	994970-2	COUNTER, MAGNETIC	164
-	1	-	-	240638-1	SPRING, FEED FINGER	163
-	1	-	-	2119641-2	FEED CAM, AIR FEED	152
-	1	1	-	2168083-8	SCR, SKT HD CAP, RoHS, M4 X 16	144
-	-	1	-	2119653-2	FEED CAM, POST FEED	142
-	1	1	-	2119655-6	APPLICATOR BASIC ASSEMBLY, EF	141
-	1	1	-	1803518-1	RAM ASSEMBLY, EF PACIFIC	140
-	1	-	-	3-23627-7	PIN, RETAIN, GRVD, 3/16 X .854	137
-	1	1	-	2119955-2	ASSY, LUBRICATOR, END FEED	84
-	1	1	-	455888-9	SPACER, CRIMPER	82
-	1	1	-	1803607-2	DOCUMENTATION PACKAGE	71
-	2	2	-	2-18032-2	SCR, SET, FLT PNT, M3 X 10.0	70
-	1	1	-	2119740-1	TAG, IDENTIFICATION	67
-	2	2	-	2168078-1	SCREW, DRIVE, RH, RoHS, 2 x .188	66
-	-	1	-	5-18022-5	SCR, HEX HD CAP, M4 X 6.0	59
-	-	1	-	2063961-3	FEED FINGER	58
-	4	4	-	2168400-1	SHCS, LOW HEAD, RoHS, M4 X 12	57
-	2	2	-	2168083-3	SCR, SKT HD CAP, RoHS, M4 X 12.0	56
-	2	2	-	5018030-1	NUT, HEX, REG, RoHS, M3	54
-	2	2	-	986965-8	NUT, LOCK, HEX, TORQUE (M4)	53
-	1	-	-	2119792-9	PAWL, EF, AIR	51
-	1	2	-	18023-9	SCR, SKT HD CAP M4 X 6.0	49
-	-	1	-	2119652-1	FEED CAM, PRE FEED	48
-	1	1	-	1803602-1	SCR, BHSC, RoHS (M8 X 25)	41
-	8	8	-	1-18028-2	WASHER, FLAT, REG M4	33
-	2	2	-	2168083-8	SCR, SKT HD CAP, RoHS, M4 X 16	31
-	2	2	-	2168083-2	SCR, SKT HD CAP, RoHS, M4 X 8.0	29
-	1	1	-	240639-1	STRIPPER (MACHINING)	27
-	2	2	-	1-2168083-5	SCR, SKT HD CAP, RoHS, M4 X 30	25
-	1	1	-	1752371-2	PLATE, STRIP GUIDE	24
-	2	2	-	22281-8	SPRING, COMPRESSION	22
-	1	1	-	1803292-4	DRAG	20
-	1	1	-	7-1901696-9	STRIP GUIDE, REAR	19
-	1	1	-	8-1901695-0	STRIP GUIDE, FRONT	18
-	1	1	-	2-240641-8	SPACER	16
-	1	1	-	690783-9	PLATE, SPACER	14
-	1	1	-	1-690759-3	FORMING (FLANGING) TOOL	12
-	1	1	-	1-240644-1	PLATE, REAR SHEAR	11
-	2	2	-	1-240645-2	SPACER, SHEAR PLATE	10
-	1	1	-	690784-1	FRONT SHEAR PLATE	9
-	1	1	-	4-1803002-4	ANVIL, COMBINATION, END FEED	8
-	1	1	-	2-240651-1	BLADE, SLUG	7
-	-	-	-	-	-	6
-	1	1	-	3-240641-7	SPACER	5
-	-	-	-	-	-	4
-	-	-	-	-	-	3
-	-	-	-	-	-	2
-	1	1	-	1-456412-0	CRIMPER, WIRE .180 F PREMIUM	1
-	77-22-21	-	-	PART NO	DESCRIPTION	ITEM NO

PACIFIC VERSION
Shown on sheets 3 of 4 & 4 of 4
(Atlantic version shown on sheets 1 of 4 & 2 of 4)

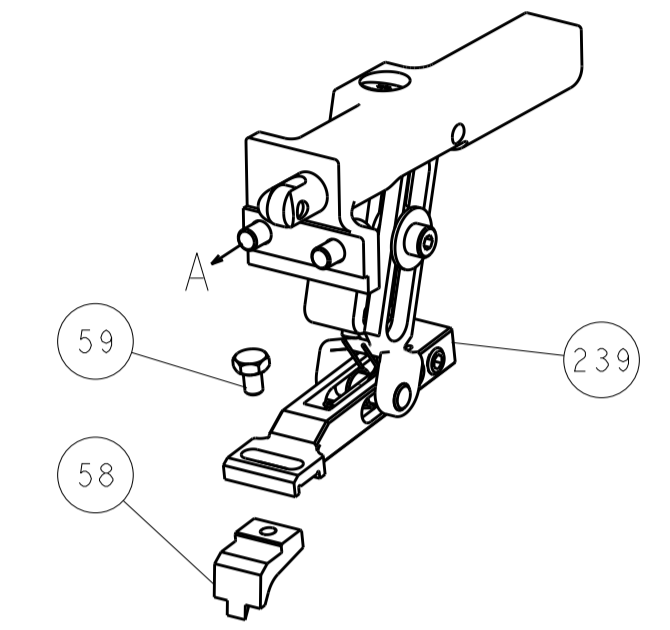
DIMENSIONS: mm		TOLERANCES UNLESS OTHERWISE SPECIFIED:		DWG: F. ZHANG 24JUN2019		CHK: T. ELBIN 24JUN2019		NAME: TE Connectivity Harrisburg, PA 17105-3608	
0 PLC ±		1 PLC ±		APVD: T. ELBIN 24JUN2019		PRODUCT SPEC		Customer Accessible Production Drawing	
2 PLC ±		3 PLC ±		APPL SPEC		SCALE: 1:1		SHEET 3 OF 4	
4 PLC ±		ANGLES		WEIGHT		SIZE: A1		REV: A	
FINISH		MATERIAL		CAGE CODE: 00779		DRAWING NO: 4150016		RESTRICTED TO: -	

LOC		DIST		REVISIONS			
A	66	P	LTM	DESCRIPTION	DATE	OWN	APVD
		-	-	SEE SHEET 1	-	-	-

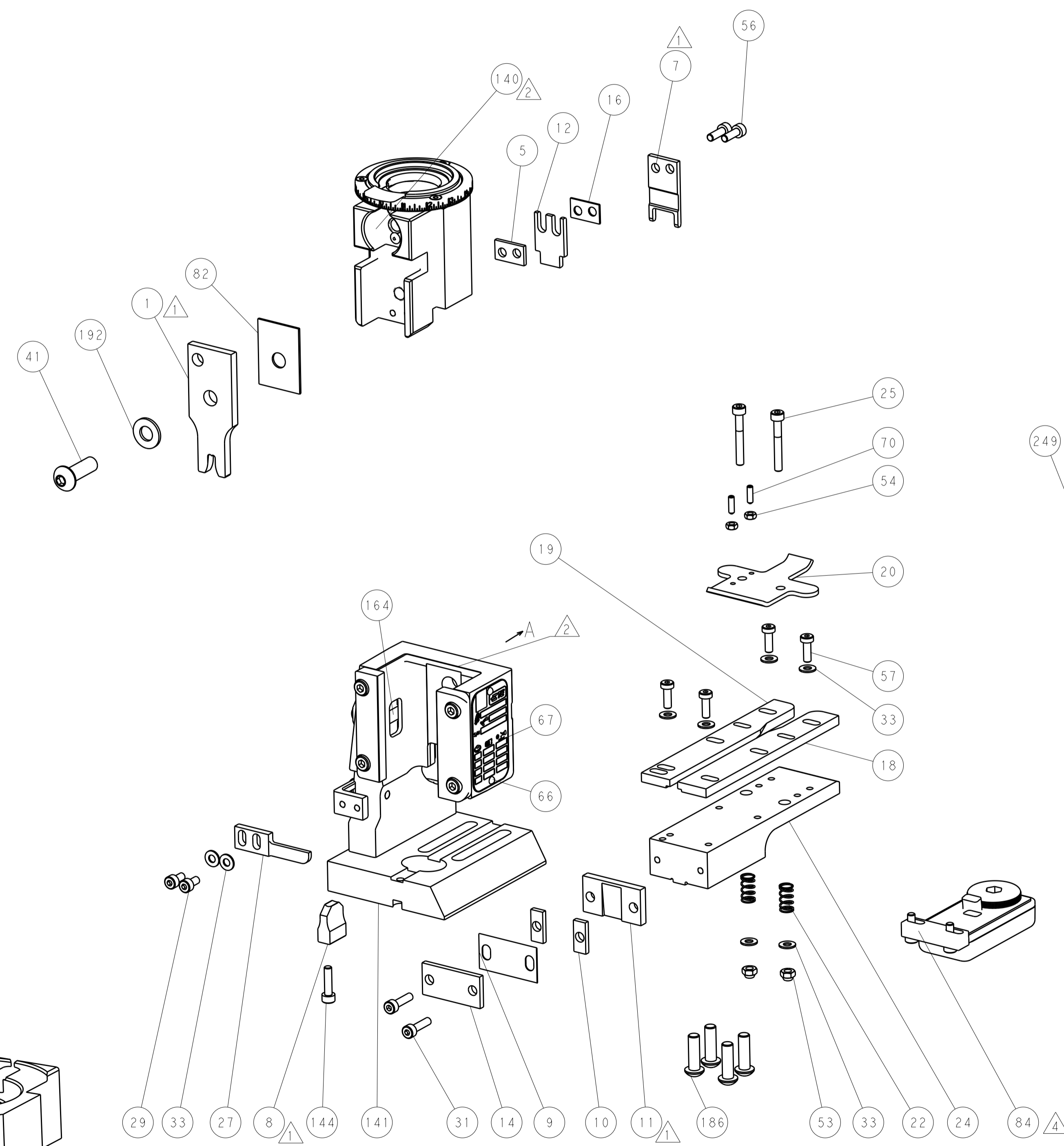
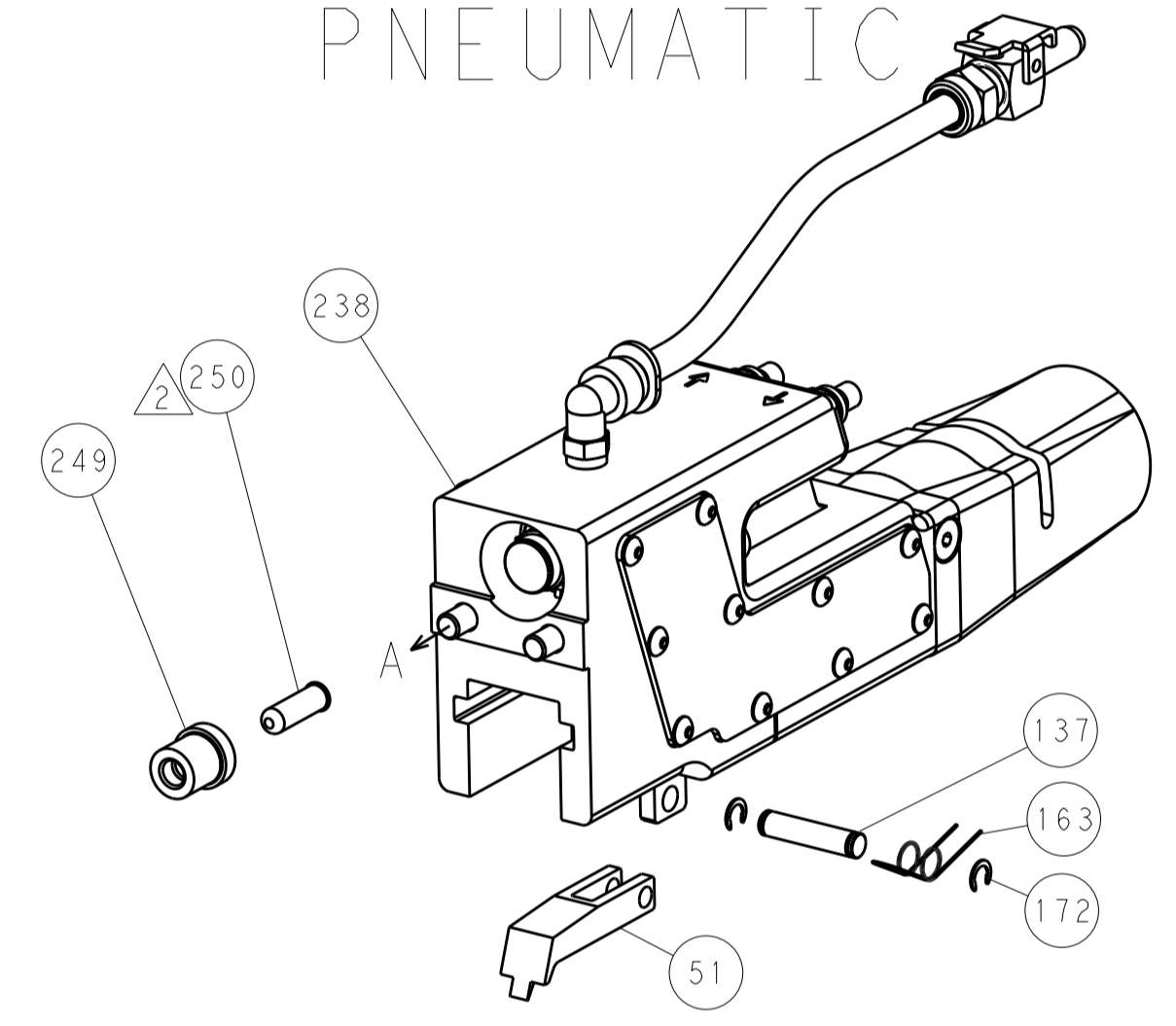


RAM SET-UP

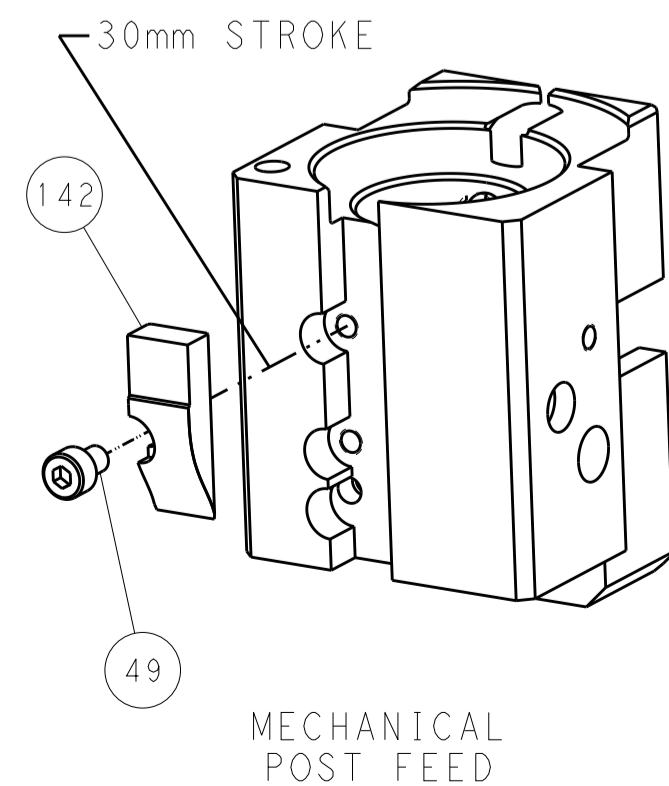
FEED TYPE
MECHANICAL



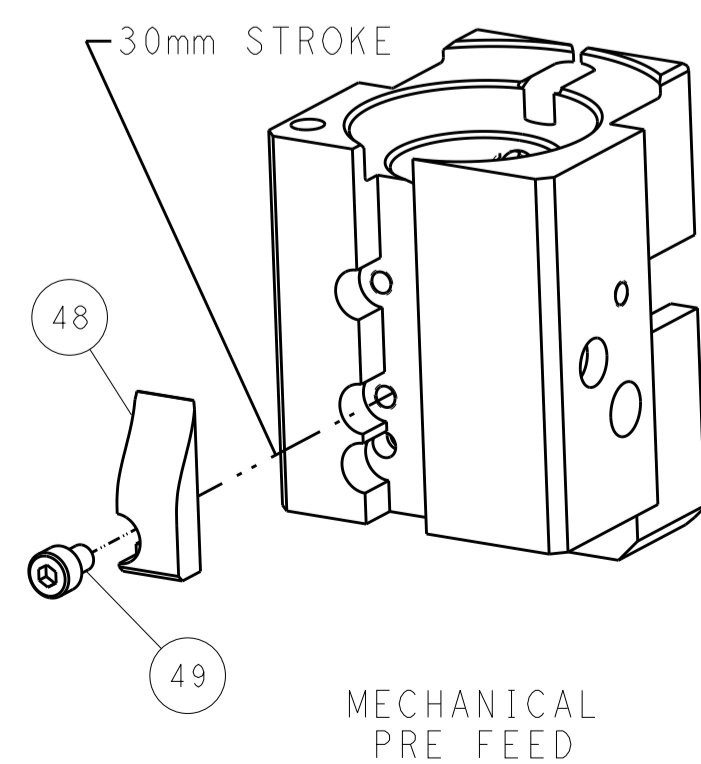
PNEUMATIC



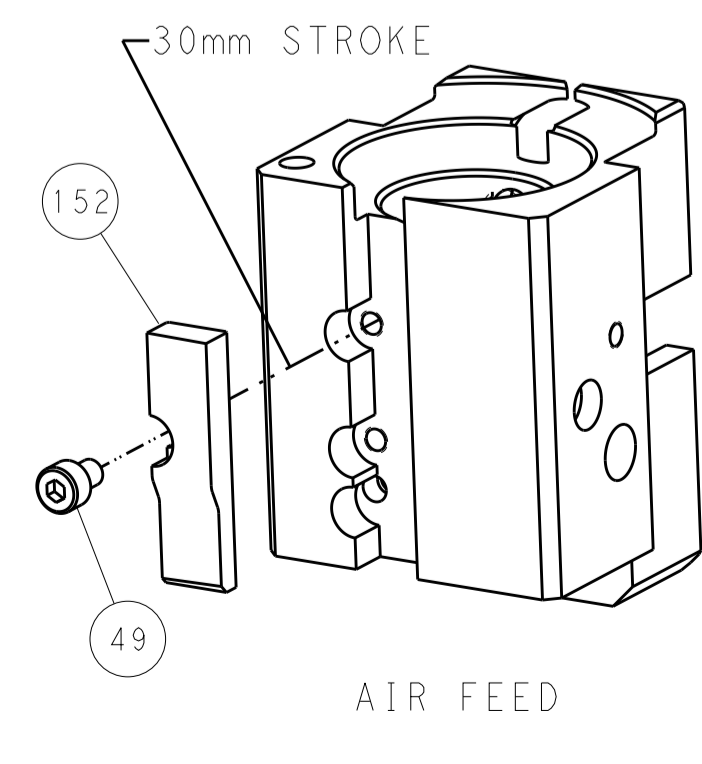
CAM POSITIONS



MECHANICAL POST FEED



MECHANICAL PRE FEED



AIR FEED

PACIFIC VERSION
 Shown on sheets 3 of 4 & 4 of 4
 (Atlantic version shown on sheets 1 of 4 & 2 of 4)

DIMENSIONS:		TOLERANCES UNLESS OTHERWISE SPECIFIED:		OWN: F. ZHANG 24JUN2019		TE Connectivity	
mm	0 PLC ±	1 PLC ±	2 PLC ±	3 PLC ±	4 PLC ±	5 PLC ±	Harrisburg, PA 17105-3608
	ANGLES ±			CHK: T. ELBIN 24JUN2019		NAME: Ocean End Feed Applier	
MATERIAL:	FINISH:			APVD: T. ELBIN 24JUN2019		SIZE: CAGE CODE: DRAWING NO: A1100779 ©=4150016	
				WEIGHT:		RESTRICTED TO: Customer Accessible Production Drawing	
				SCALE: 1:1		SHEET 4 OF 4 REV A	