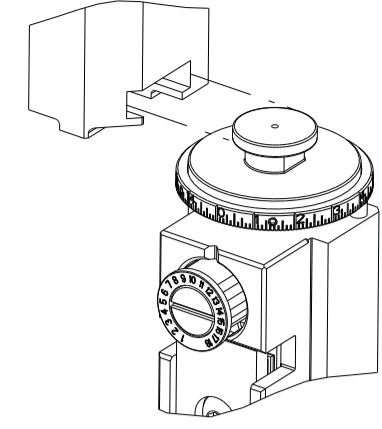


| PART NUMBER | REVISION | DESCRIPTION                      | FEED TYPE  |
|-------------|----------|----------------------------------|------------|
| 2837951-1   | A        | FINE CRIMP HEIGHT ADJUST         | MECHANICAL |
| 2837951-2   | A        | FINE CRIMP HEIGHT ADJUST         | PNEUMATIC  |
| 7-2837951-1 | A        | MECHANICAL AND CRIMP TOOLING KIT | MECHANICAL |
| 7-2837951-2 | A        | PNEUMATIC AND CRIMP TOOLING KIT  | PNEUMATIC  |
| 7-2837951-7 | A        | CRIMP TOOLING KIT                | -          |

ATLANTIC VERSION TERMINATOR INTERFACE ADAPTER



| APPLICATOR DATA |                |      |
|-----------------|----------------|------|
| CRIMP           | SIZE           | TYPE |
| WIRE            | 2.52 mm [.099] | F    |
| INSUL           | 3.40 mm [.134] | F    |

APPLICATOR INSTRUCTIONS  
408-35042

| TERMINAL DATA: DELPHI TERMINAL DELPHI CRIMP SPECIFICATION |                 |                                    |                 |
|---|-----------------|------------------------------------|-----------------|
| TERMINAL NAME: TAXI TERM F GT FBT 280 SN                  |                 |                                    |                 |
| WIRE STRIP LENGTH   |                 | TERMINAL INSULATION DIAMETER RANGE |                 |
| 4.50-5.26 mm [.177-.207 IN]                               |                 | ∅2.20-3.20 mm [.087-.126 IN]       |                 |
| TERMINAL APPLICATION SPECIFICATION                        | 13673613        |                                    | AT9106          |
| TERMINALS APPLIED   |                 |                                    |                 |
| TE TERMINAL   | DELPHI TERMINAL | TE TERMINAL                        | DELPHI TERMINAL |
| 3311762-1   | 13673613        |                                    |                 |

| TERMINAL DATA: DELPHI TERMINAL TE CRIMP SPECIFICATION |                 |                                    |                 |
|---|-----------------|------------------------------------|-----------------|
| TERMINAL NAME: TAXI TERM F GT FBT 280 SN              |                 |                                    |                 |
| WIRE STRIP LENGTH                                     |                 | TERMINAL INSULATION DIAMETER RANGE |                 |
| 4.50-5.26 mm [.177-.207 IN]                           |                 | ∅2.20-3.20 mm [.087-.126 IN]       |                 |
| TERMINAL APPLICATION SPECIFICATION                    | NONE            |                                    | AT9106          |
| TERMINALS APPLIED                                     |                 |                                    |                 |
| TE TERMINAL   | DELPHI TERMINAL | TE TERMINAL                        | DELPHI TERMINAL |
| 3311762-1   | 13673613        |                                    |                 |

| WIRE SIZE | CRIMP HEIGHT mm [INCH]     | CRIMP HEIGHT REFERENCE SETTING |
|-----------|----------------------------|--------------------------------|
| 2.50mm2   | 1.85+/-0.05 [.073+/- .002] | 6.9                            |

| WIRE SIZE | CRIMP HEIGHT mm [INCH]     | CRIMP HEIGHT REFERENCE SETTING |
|-----------|----------------------------|--------------------------------|
| 3.00mm2   | 1.99+/-0.05 [.078+/- .002] | 5.5                            |
| 1.50mm2   | 1.56+/-0.05 [.061+/- .002] | 9.8                            |



- RECOMMENDED SPARE PARTS
- REFER TO SUPPLIED INSTRUCTION SHEET FOR CLEANING, LUBRICATION AND STORAGE OF APPLICATOR.
- APPLY PART NUMBER 2-23419-6 LOCTITE TO THREADS OF ITEM 242.
- CRIMP HEIGHT REFERENCE SETTING WAS THE SETTING USED WHEN THE APPLICATOR WAS QUALIFIED AT THE FACTORY. ADJUSTMENT MAY BE NECESSARY WHEN RUNNING APPLICATOR IN THE FIELD.
- 5. UNLESS SPECIFIED OTHERWISE TORQUE VALUES SHALL BE USED PER DOCUMENT 101-35000.
- THE CUSTOMER ACKNOWLEDGES THAT THE TERMINAL MANUFACTURER'S CRIMP SPECIFICATIONS ARE UNKNOWN. IN ADDITION THE CUSTOMER ACKNOWLEDGES THAT TE CONNECTIVITY HAS CALCULATED CRIMP SPECIFICATIONS FOR THIS PRODUCT THAT MAY NOT MATCH THE TERMINAL MANUFACTURER'S SPECIFICATIONS. TE CONNECTIVITY USES ACCEPTED PRACTICES TO DESIGN TERMINATION TOOLING FOR NON-TE CONNECTIVITY PRODUCTS. HOWEVER, **TE CONNECTIVITY EXPRESSLY DISCLAIMS ANY AND ALL WARRANTIES THAT THE TOOLING WILL RELIABLY APPLY NON-TE CONNECTIVITY PRODUCTS, INCLUDING BUT NOT LIMITED TO IMPLIED WARRANTIES OF MERCHANTABILITY OR FITNESS FOR PARTICULAR PURPOSE. THE CUSTOMER ASSUMES ALL RESPONSIBILITY AND LIABILITY FOR THE PERFORMANCE OF TERMINATED ASSEMBLIES USING SUCH TOOLING.** THE CUSTOMER EXPRESSLY INDEMNIFIES TE CONNECTIVITY AND SHALL HOLD TE CONNECTIVITY HARMLESS FROM ALL CLAIMS, DEMANDS, LOSSES, EXPENSES AND LIABILITIES RESULTING FROM THE USE OF THIS TOOLING ON NON-TE CONNECTIVITY PRODUCTS.
- TERMINAL LUBRICANT IS RECOMMENDED.

\*WARNING  
ON INSTALLATION, SET WIRE DISC TO CRIMP HEIGHT REFERENCE SETTING FOR LARGEST WIRE SIZE. CRIMP HEIGHT REFERENCE SETTINGS GREATER THAN THE VALUE SHOWN MAY CAUSE DAMAGE TO THE CRIMP TOOLING, REFER TO THE INSTRUCTION SHEET FOR PROPER SETUP AND ADJUSTMENTS.

| LOC | DIST | REVISIONS |     |             |           |     |      |
|-----|------|-----------|-----|-------------|-----------|-----|------|
|     |      | P         | LTN | DESCRIPTION | DATE      | DWN | APVD |
| A   | 66   | 1         |     | PRELIMINARY | 05FEB2021 | FZ  | YY   |
|     |      | A         |     | RELEASED    | 15MAR2021 | TB  | TE   |

|   |     |     |     |     |             |                                     |                               |   |
|---|-----|-----|-----|-----|-------------|-------------------------------------|-------------------------------|---|
| - | 1   | 1   | 1   | 1   | 2119791-5   | DEPRESSOR, WIRE                     | 286                           |   |
| - | 1   | -   | 1   | -   | 2119641-1   | FEED CAM, AIR FEED                  | 248                           |   |
| - | 1   | 1   | 1   | 1   | 2119082-4   | CAM, SNAIL, INSULATION ADJUSTMENT   | 244                           |   |
| - | 1   | 1   | 1   | 1   | 2079764-1   | WASHER, WAVE SPRING, CREST-TO-CREST | 243                           |   |
| - | 1   | 1   | 1   | 1   | 2119083-1   | RETAINER, INSULATION DIAL           | 242                           |   |
| - | 1   | 1   | 1   | 1   | 7-18023-7   | SCR, SKT HD CAP M3 X 4.0            | 241                           |   |
| - | -   | 1   | -   | 1   | 2119580-1   | MECHANICAL FEED ASSEMBLY            | 239                           |   |
| - | 1   | -   | 1   | -   | 2844940-1   | AIR FEED MODULE                     | 238                           |   |
| - | REF | REF | REF | REF | 994970-2    | COUNTER, MAGNETIC                   | 164                           |   |
| - | 1   | 1   | 1   | 1   | 2119955-1   | ASSY, LUBRICATOR, SIDE FEED         | 113                           |   |
| - | 1   | 1   | 1   | 1   | 2844908-1   | SCREW, LOCKING                      | 99                            |   |
| - | 1   | 1   | 1   | 1   | 2844907-1   | POST, LOCKING                       | 98                            |   |
| - | 1   | 1   | 1   | 1   | 455888-7    | SPACER, CRIMPER                     | 82                            |   |
| - | 1   | 1   | 1   | 1   | 1803607-3   | DOCUMENTATION PACKAGE               | 71                            |   |
| - | 1   | 1   | 1   | 1   | 2119740-1   | TAG, IDENTIFICATION                 | 67                            |   |
| - | 2   | 2   | 2   | 2   | 2168078-1   | SCREW, DRIVE, RH, RoHS, 2 x .188    | 66                            |   |
| - | 1   | 1   | 1   | 1   | 2168083-2   | SCR, SKT HD CAP, RoHS, M4 X 8.0     | 60                            |   |
| - | 1   | 1   | 1   | 1   | 5-18022-5   | SCR, HEX HD CAP, M4 X 6.0           | 59                            |   |
| - | 1   | 1   | 1   | 1   | 1338683-8   | FEED PAWL                           | 56                            |   |
| - | 4   | 4   | 4   | 4   | 2168083-3   | SCR, SKT HD CAP, RoHS, M4 X 12.0    | 54                            |   |
| - | 2   | 2   | 2   | 2   | 2-2168083-5 | SCR, SKT HD CAP, RoHS, M4 X 14      | 53                            |   |
| - | 1   | 1   | 1   | 1   | 1803382-6   | HOLD DOWN, SPRING LOADED            | 50                            |   |
| - | 1   | 2   | 1   | 2   | 18023-9     | SCR, SKT HD CAP M4 X 6.0            | 49                            |   |
| - | -   | 1   | -   | 1   | 2119652-1   | FEED CAM, PRE FEED                  | 48                            |   |
| - | -   | 1   | -   | 1   | 2119653-1   | FEED CAM, POST FEED                 | 47                            |   |
| - | 1   | 1   | 1   | 1   | 1803583-9   | APPLICATOR BASIC ASSEMBLY, SF       | 46                            |   |
| - | 1   | 1   | 1   | 1   | 1803515-1   | RAM ASSEMBLY, SF ATLANTIC           | 44                            |   |
| - | 1   | 1   | 1   | 1   | 1803602-1   | SCR, BHSC, RoHS (M8 X 25)           | 41                            |   |
| - | 1   | 1   | 1   | 1   | 7-1752356-2 | SUPPORT, TERMINAL                   | 34                            |   |
| - | 2   | 2   | 2   | 2   | 2079383-5   | SCR, BHSC, RoHS (M4 X 20)           | 33                            |   |
| - | 2   | 2   | 2   | 2   | 2-2844962-8 | SPACER, CYLINDRICAL, STRIP GUIDE    | 30                            |   |
| - | 1   | 1   | 1   | 1   | 2844992-1   | ASSEMBLY, STRIP GUIDE               | 29                            |   |
| - | 1   | 1   | 1   | 1   | 1320928-2   | STRIP GUIDE                         | 24                            |   |
| - | 1   | 1   | 1   | 1   | 2168083-2   | SCR, SKT HD CAP, RoHS, M4 X 8.0     | 21                            |   |
| - | 2   | 2   | 2   | 2   | 1-18028-2   | WASHER, FLAT, REG M4                | 20                            |   |
| - | 1   | 1   | 1   | 1   | 2119533-1   | STRIPPER, SIDE FEED                 | 19                            |   |
| - | 1   | 1   | 1   | 1   | 2119806-1   | INSERT, SHEAR                       | 13                            |   |
| - | 1   | 1   | 1   | 1   | 3-22280-3   | SPRING, COMPRESSION                 | 12                            |   |
| - | 1   | 1   | 1   | 1   | 1-356885-4  | STOP, SHEAR                         | 11                            |   |
| - | 1   | 1   | 1   | 1   | 2119805-1   | SHEAR HOLDER, FRONT                 | 10                            |   |
| - | 1   | 1   | 1   | 1   | 1803095-6   | FLOATING SHEAR, FRONT               | 9                             |   |
| - | 1   | 2   | 2   | 1   | 1           | 9-1803512-9                         | ANVIL, COMBINATION            | 8 |
| - | 1   | 1   | 1   | 1   | 240641-5    | SPACER                              | 7                             |   |
| - | -   | -   | -   | -   | -           | -                                   | 6                             |   |
| - | 1   | 1   | 1   | 1   | 2119757-8   | DEPRESSOR, SHEAR                    | 5                             |   |
| - | 1   | 1   | 1   | 1   | 1-238011-7  | BLOCK, CRIMPER SPACER               | 4                             |   |
| - | 1   | 2   | 2   | 1   | 1           | 4-1803246-7                         | CRIMPER, INSULATION F PREMIUM | 3 |
| - | 1   | 1   | 1   | 1   | 455888-5    | SPACER, CRIMPER                     | 2                             |   |
| - | 1   | 2   | 2   | 1   | 1           | 1803241-7                           | CRIMPER, WIRE F               | 1 |
| - | 77  | -72 | -71 | -2  | -1          | PART NO                             | ITEM NO                       |   |

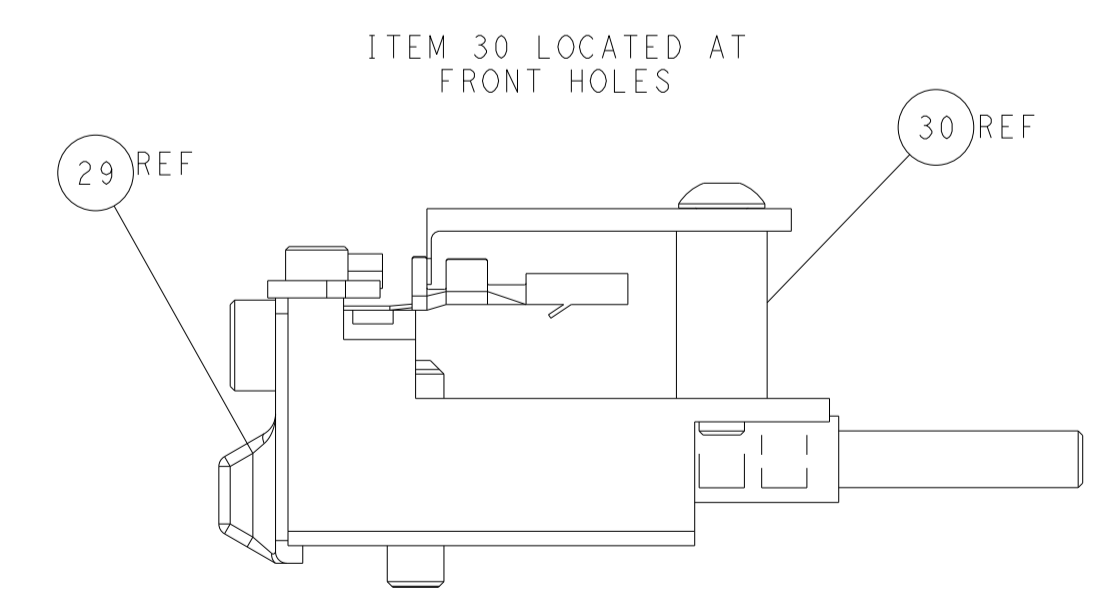
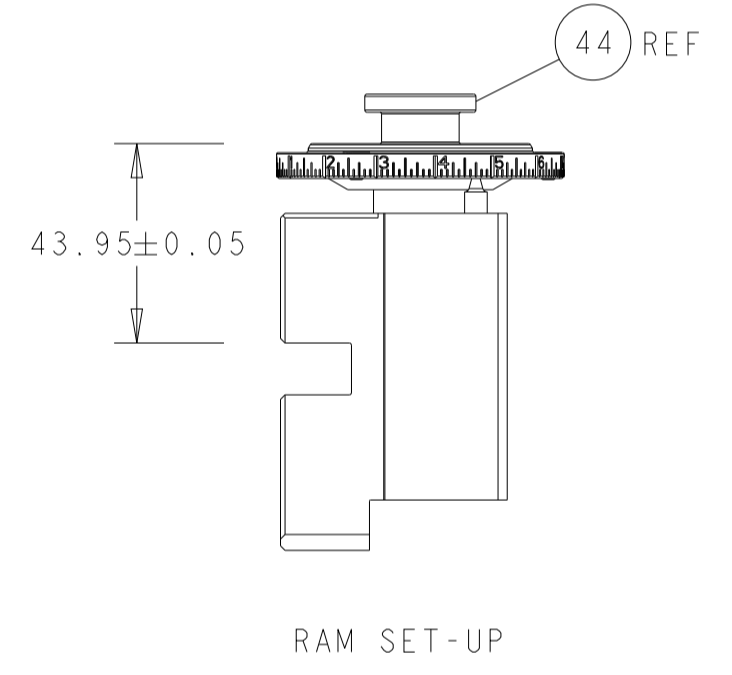
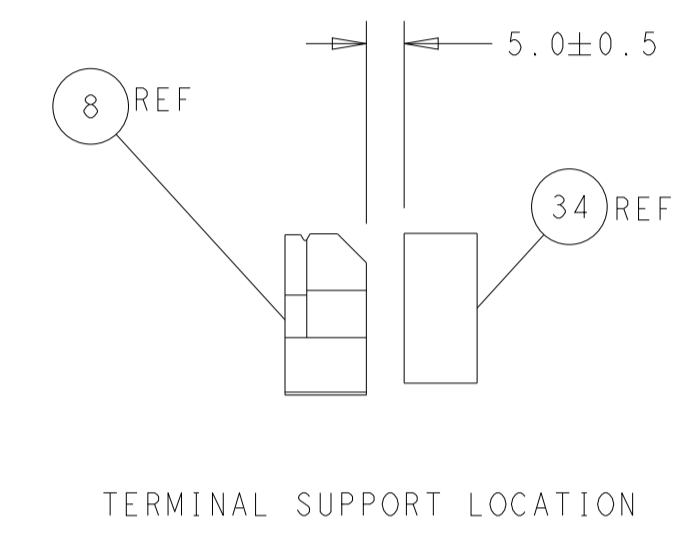
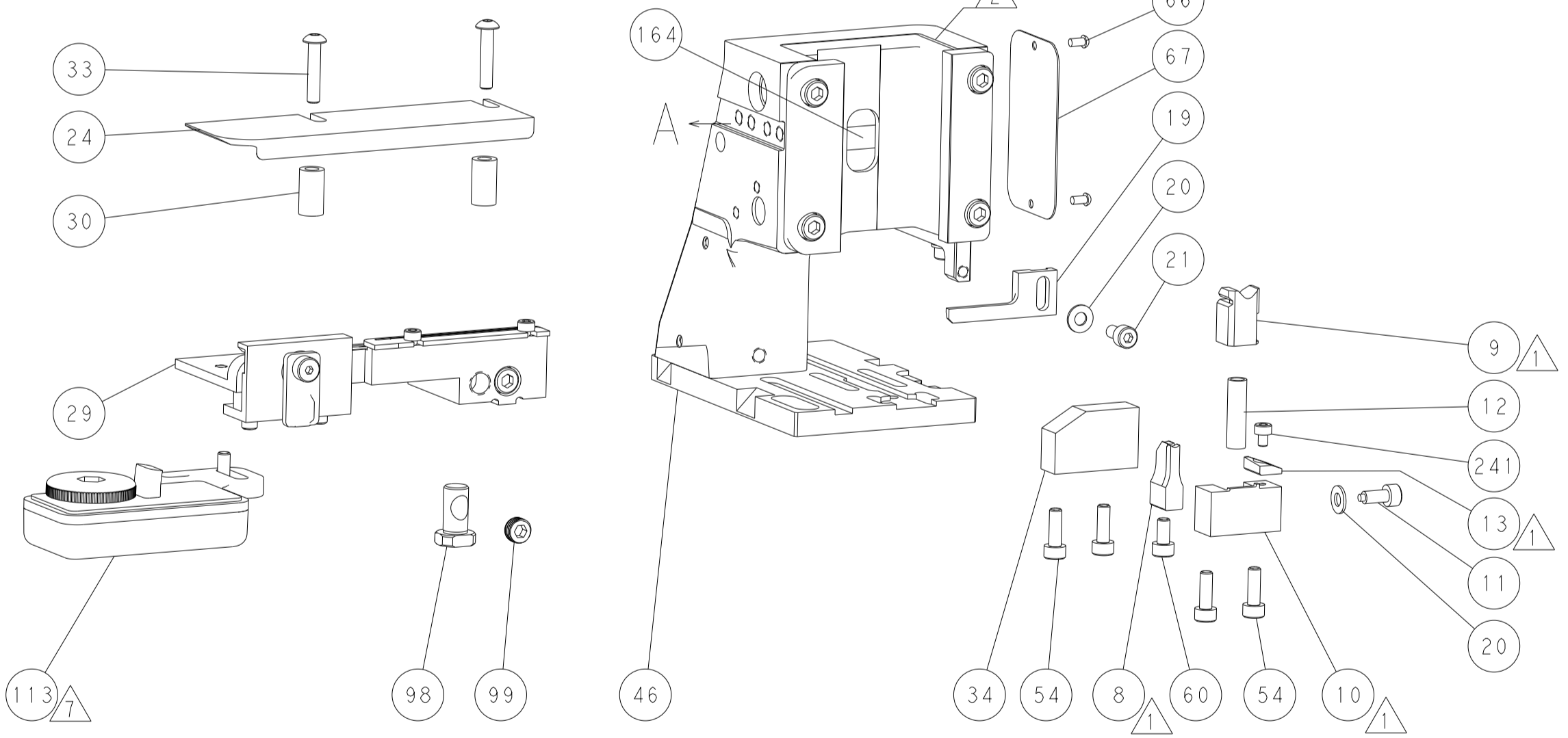
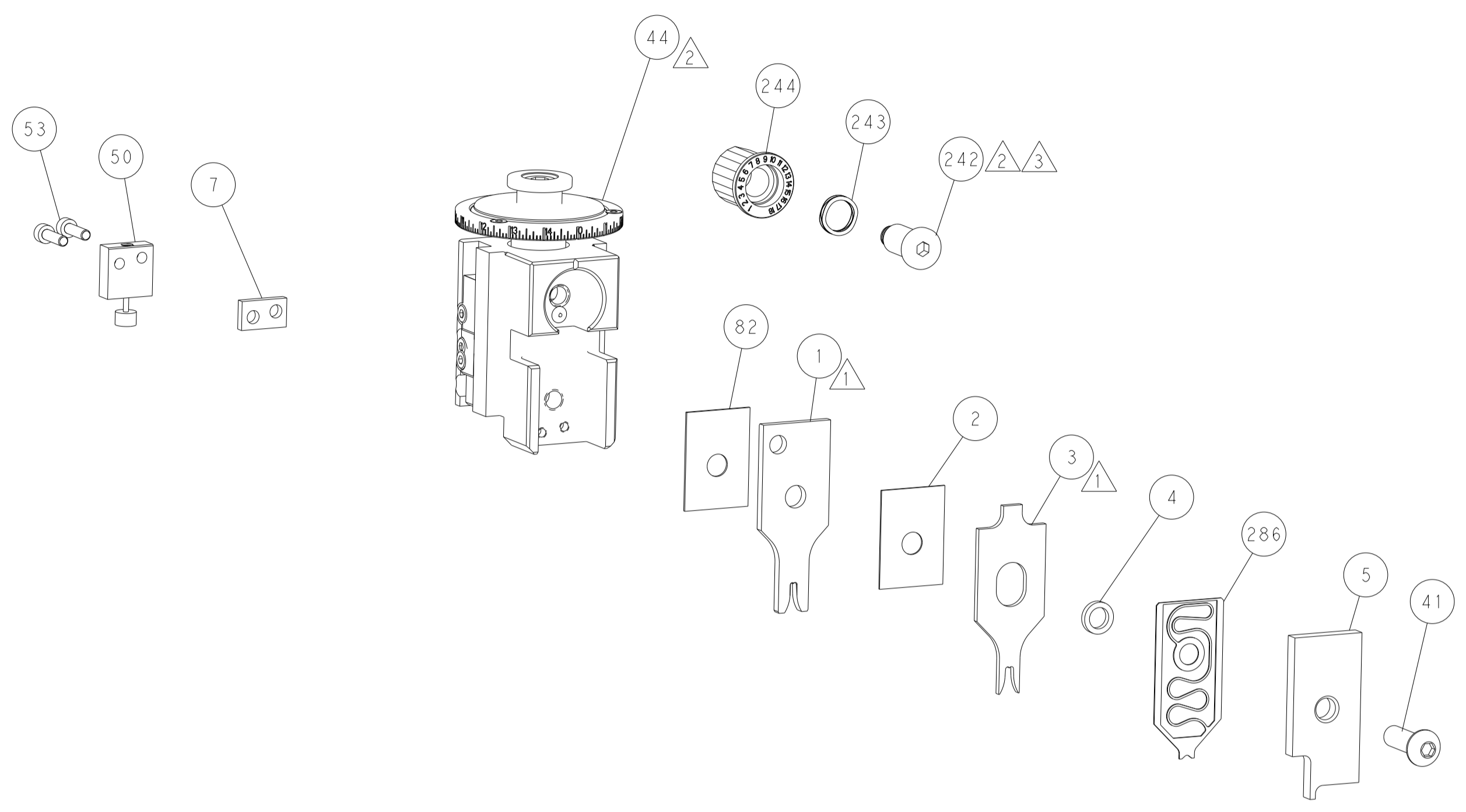
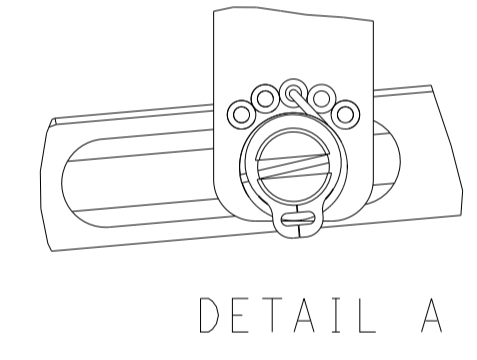
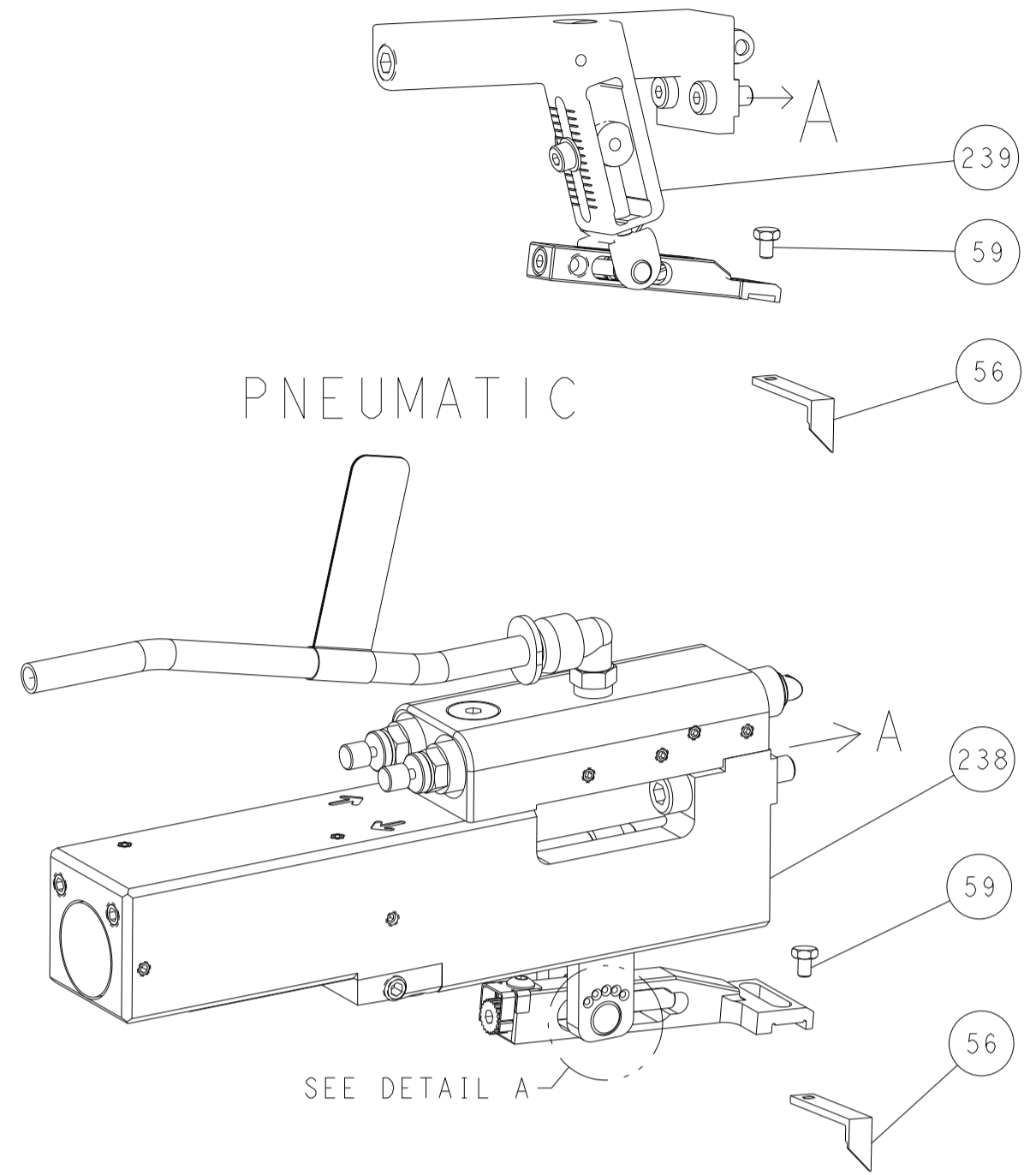
ATLANTIC VERSION  
Shown on sheets 1 of 4 & 2 of 4  
(Pacific version shown on sheets 3 of 4 & 4 of 4)

| DIMENSIONS: |         | TOLERANCES UNLESS OTHERWISE SPECIFIED: |         | MATERIAL: |         | FINISH: |        | WEIGHT: |  | SCALE: |       | SHEET: |   | REV: |  |
|-------------|---------|--|---------|-----------|---------|---------|--------|---------|--|--------|-------|--------|---|------|--|
| mm          | 0 PLC ± | 1 PLC ±                                | 2 PLC ± | 3 PLC ±   | 4 PLC ± | ANGLES  | FINISH |         |  | A      | 00779 | 1      | 4 | A    |  |

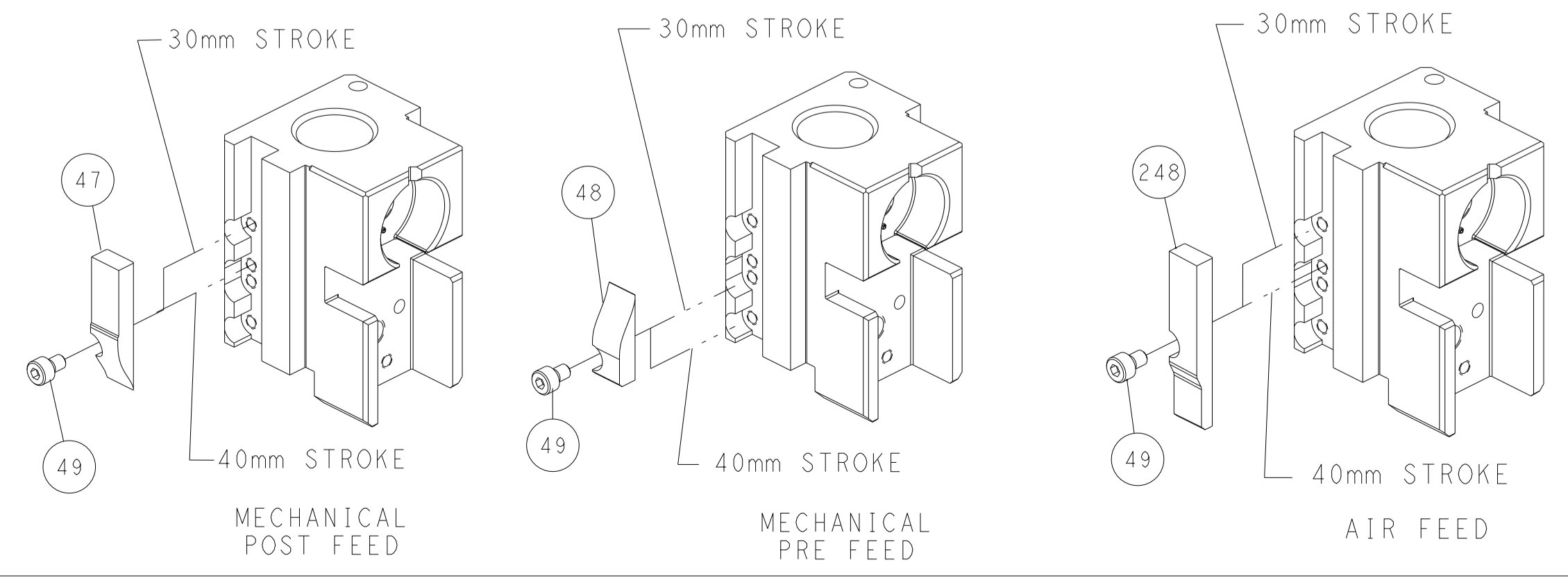
Customer Accessible Production Drawing

| LOC | DIST | REVISIONS   |      |     |      |
|-----|------|-------------|------|-----|------|
| P   | LTN  | DESCRIPTION | DATE | OWN | APVD |
| A   | 66   | SEE SHEET 1 | -    | -   | -    |

# FEED TYPE MECHANICAL



# CAM POSITIONS

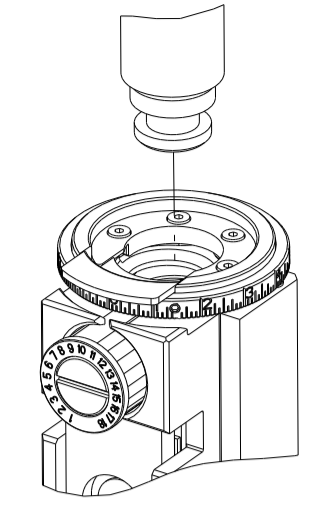


**ATLANTIC VERSION**  
 Shown on sheets 1 of 4 & 2 of 4  
 (Pacific version shown on sheets 3 of 4 & 4 of 4)

|  |  |  |  |
|--|--|--|--|
| <small>THIS DRAWING IS A CONTROLLED DOCUMENT FOR THE ELECTRONICS CORPORATION. IT IS THE PROPERTY OF THE CORPORATION AND IS NOT TO BE REPRODUCED OR TRANSMITTED IN ANY FORM OR BY ANY MEANS, ELECTRONIC OR MECHANICAL, INCLUDING PHOTOCOPYING, RECORDING, OR BY ANY INFORMATION STORAGE AND RETRIEVAL SYSTEM, WITHOUT THE WRITTEN PERMISSION OF THE CORPORATION. SHOULD BE CONTACTED FOR THE LATEST REVISION.</small> |  | DWN<br>F. ZHANG<br>05FEB2021                     | TE Connectivity<br>Harrisburg, PA 17105-3608   |
| DIMENSIONS:<br>mm  |  | CHK<br>Y. YIN<br>05FEB2021                       | NAME<br>OCEAN 2.0 Side Feed<br>Applicator  |
| TOLERANCES UNLESS OTHERWISE SPECIFIED:<br>0 PLC ±<br>1 PLC ±<br>2 PLC ±<br>3 PLC ±<br>4 PLC ±<br>ANGLES ±<br>FINISH  |  | APVD<br>Y. YIN<br>05FEB2021                      | PRODUCT SPEC<br>APPLICATION SPEC<br>SIZE<br>CAGE CODE<br>DRAWING NO<br>RESTRICTED TO |
| MATERIAL   |  | WEIGHT<br>Customer Accessible Production Drawing | SCALE<br>1:2<br>SHEET 2 OF 4<br>REV A  |

| 8  | 7        | 6                        | 5          | 4  | 3 | 2 | 1 |
|--|----------|--------------------------|------------|----|---|---|---|
| THIS DRAWING IS UNPUBLISHED.                                       |          | RELEASED FOR PUBLICATION |            | 20 |   |   |   |
| COPYRIGHT 20 BY TYCO ELECTRONICS CORPORATION. ALL RIGHTS RESERVED. |          |                          |            |    |   |   |   |
| PART NUMBER  | REVISION | DESCRIPTION              | FEED TYPE  |    |   |   |   |
| 2-2837951-1  | A        | FINE CRIMP HEIGHT ADJUST | MECHANICAL |    |   |   |   |
| 2-2837951-2  | A        | FINE CRIMP HEIGHT ADJUST | PNEUMATIC  |    |   |   |   |
| 7-2837951-7  | A        | CRIMP TOOLING KIT        | -          |    |   |   |   |

PACIFIC VERSION TERMINATOR INTERFACE ADAPTER



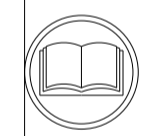
| APPLICATOR DATA                   |                |      |
|-----------------------------------|----------------|------|
| CRIMP                             | SIZE           | TYPE |
| WIRE                              | 2.52 mm [.099] | F    |
| INSUL                             | 3.40 mm [.134] | F    |
| APPLICATOR INSTRUCTIONS 408-35042 |                |      |

| TERMINAL DATA: DELPHI TERMINAL DELPHI CRIMP SPECIFICATION |  |             |                 |
|---|--|-------------|-----------------|
| TERMINAL NAME: TAXI TERM F GT FBT 280 SN                  |  |             |                 |
| WIRE STRIP LENGTH<br>4.50-5.26 mm [1.177-.207 IN]         | TERMINAL INSULATION DIAMETER RANGE<br>Ø2.20-3.20 mm [.087-.126 IN] |             |                 |
| TERMINAL APPLICATION SPECIFICATION<br>13673613            | -  | AT9106      |                 |
| TERMINALS APPLIED   |  |             |                 |
| TE TERMINAL<br>3311762-1                                  | DELPHI TERMINAL<br>13673613  | TE TERMINAL | DELPHI TERMINAL |

| TERMINAL DATA: DELPHI TERMINAL TE CRIMP SPECIFICATION |  |             |                 |
|---|--|-------------|-----------------|
| TERMINAL NAME: TAXI TERM F GT FBT 280 SN              |  |             |                 |
| WIRE STRIP LENGTH<br>4.50-5.26 mm [1.177-.207 IN]     | TERMINAL INSULATION DIAMETER RANGE<br>Ø2.20-3.20 mm [.087-.126 IN] |             |                 |
| TERMINAL APPLICATION SPECIFICATION<br>NONE            | -  | AT9106      |                 |
| TERMINALS APPLIED                                     |  |             |                 |
| TE TERMINAL<br>3311762-1                              | DELPHI TERMINAL<br>13673613  | TE TERMINAL | DELPHI TERMINAL |

| WIRE SIZE | CRIMP HEIGHT mm [INCH]     | CRIMP HEIGHT REFERENCE SETTING |
|-----------|----------------------------|--------------------------------|
| 2.50mm2   | 1.85+/-0.05 [.073+/- .002] | 6.9                            |

| WIRE SIZE | CRIMP HEIGHT mm [INCH]     | CRIMP HEIGHT REFERENCE SETTING |
|-----------|----------------------------|--------------------------------|
| 3.00mm2   | 1.99+/-0.05 [.078+/- .002] | 5.5                            |
| 1.50mm2   | 1.56+/-0.05 [.061+/- .002] | 9.8                            |



- 1. RECOMMENDED SPARE PARTS
- 2. REFER TO SUPPLIED INSTRUCTION SHEET FOR CLEANING, LUBRICATION AND STORAGE OF APPLICATOR.
- 3. APPLY PART NUMBER 2-23419-6 LOCTITE TO THREADS OF ITEM 242.
- 4. CRIMP HEIGHT REFERENCE SETTING WAS THE SETTING USED WHEN THE APPLICATOR WAS QUALIFIED AT THE FACTORY. ADJUSTMENT MAY BE NECESSARY WHEN RUNNING APPLICATOR IN THE FIELD.
- 5. UNLESS SPECIFIED OTHERWISE TORQUE VALUES SHALL BE USED PER DOCUMENT 101-35000.
- 6. THE CUSTOMER ACKNOWLEDGES THAT THE TERMINAL MANUFACTURER'S CRIMP SPECIFICATIONS ARE UNKNOWN. IN ADDITION THE CUSTOMER ACKNOWLEDGES THAT TE CONNECTIVITY HAS CALCULATED CRIMP SPECIFICATIONS FOR THIS PRODUCT THAT MAY NOT MATCH THE TERMINAL MANUFACTURER'S SPECIFICATIONS. TE CONNECTIVITY USES ACCEPTED PRACTICES TO DESIGN TERMINATION TOOLING FOR NON-TE CONNECTIVITY PRODUCTS. HOWEVER, **TE CONNECTIVITY EXPRESSLY DISCLAIMS ANY AND ALL WARRANTIES THAT THE TOOLING WILL RELIABLY APPLY NON-TE CONNECTIVITY PRODUCTS, INCLUDING BUT NOT LIMITED TO IMPLIED WARRANTIES OF MERCHANTABILITY OR FITNESS FOR PARTICULAR PURPOSE. THE CUSTOMER ASSUMES ALL RESPONSIBILITY AND LIABILITY FOR THE PERFORMANCE OF TERMINATED ASSEMBLIES USING SUCH TOOLING.** THE CUSTOMER EXPRESSLY INDEMNIFIES TE CONNECTIVITY AND SHALL HOLD TE CONNECTIVITY HARMLESS FROM ALL CLAIMS, DEMANDS, LOSSES, EXPENSES AND LIABILITIES RESULTING FROM THE USE OF THIS TOOLING ON NON-TE CONNECTIVITY PRODUCTS.
- 7. TERMINAL LUBRICANT IS RECOMMENDED.

\*WARNING  
ON INSTALLATION, SET WIRE DISC TO CRIMP HEIGHT REFERENCE SETTING FOR LARGEST WIRE SIZE. CRIMP HEIGHT REFERENCE SETTINGS GREATER THAN THE VALUE SHOWN MAY CAUSE DAMAGE TO THE CRIMP TOOLING, REFER TO THE INSTRUCTION SHEET FOR PROPER SETUP AND ADJUSTMENTS.

PACIFIC VERSION  
Shown on sheets 3 of 4 & 4 of 4  
(Atlantic version shown on sheets 1 of 4 & 2 of 4)

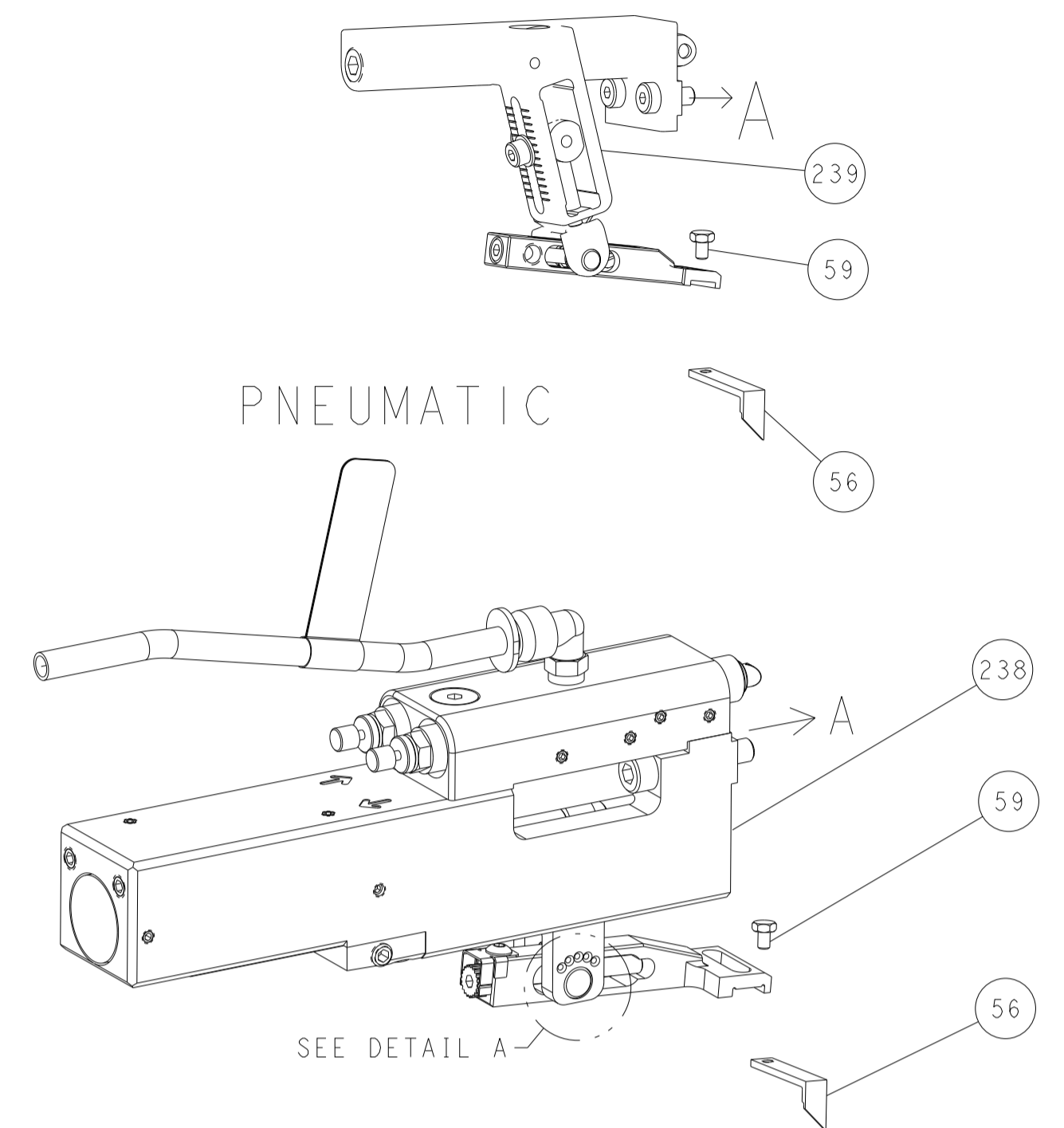
| LOC | DIST | REVISIONS |     |             |      |     |      |
|-----|------|-----------|-----|-------------|------|-----|------|
| A   | 66   | P         | LTN | DESCRIPTION | DATE | DWN | APVD |
|     |      | -         |     | SEE SHEET 1 | -    | -   | -    |

|   |     |     |             |                                     |     |
|---|-----|-----|-------------|-------------------------------------|-----|
| - | 1   | 1   | 2119791-5   | DEPRESSOR, WIRE                     | 286 |
| - | 1   | 1   | 2119082-4   | CAM, SNAIL, INSULATION ADJUSTMENT   | 244 |
| - | 1   | 1   | 2079764-1   | WASHER, WAVE SPRING, CREST-TO-CREST | 243 |
| - | 1   | 1   | 2119083-1   | RETAINER, INSULATION DIAL           | 242 |
| - | 1   | 1   | 7-18023-7   | SCR, SKT HD CAP M3 X 4.0            | 241 |
| - | -   | 1   | 2119580-1   | MECHANICAL FEED ASSEMBLY            | 239 |
| - | 1   | -   | 2844940-1   | AIR FEED MODULE                     | 238 |
| - | REF | REF | 994970-2    | COUNTER, MAGNETIC                   | 164 |
| - | 1   | -   | 2119641-2   | FEED CAM, AIR FEED                  | 151 |
| - | 1   | 1   | 2168083-8   | SCR, SKT HD CAP, RoHS, M4 X 16      | 144 |
| - | 4   | 4   | 2168083-9   | SCR, SKT HD CAP, RoHS, M4 X 20      | 143 |
| - | -   | 1   | 2119653-2   | FEED CAM, POST FEED                 | 142 |
| - | 1   | 1   | 1-1803583-0 | APPLICATOR BASIC ASSEMBLY, SF       | 141 |
| - | 1   | 1   | 1803516-1   | RAM ASSEMBLY, SF PACIFIC            | 140 |
| - | 1   | 1   | 2119955-1   | ASSY, LUBRICATOR, SIDE FEED         | 113 |
| - | 1   | 1   | 2844908-1   | SCREW, LOCKING                      | 99  |
| - | 1   | 1   | 2844907-1   | POST, LOCKING                       | 98  |
| - | 1   | 1   | 455888-7    | SPACER, CRIMPER                     | 82  |
| - | 1   | 1   | 1803607-3   | DOCUMENTATION PACKAGE               | 71  |
| - | 1   | 1   | 2119740-1   | TAG, IDENTIFICATION                 | 67  |
| - | 2   | 2   | 2168078-1   | SCREW, DRIVE, RH, RoHS, 2 x .188    | 66  |
| - | 1   | 1   | 5-18022-5   | SCR, HEX HD CAP, M4 X 6.0           | 59  |
| - | 1   | 1   | 1338683-8   | FEED PAWL                           | 56  |
| - | 2   | 2   | 2-2168083-5 | SCR, SKT HD CAP, RoHS, M4 X 14      | 53  |
| - | 1   | 1   | 1803382-6   | HOLD DOWN, SPRING LOADED            | 50  |
| - | 1   | 2   | 18023-9     | SCR, SKT HD CAP M4 X 6.0            | 49  |
| - | -   | 1   | 2119652-1   | FEED CAM, PRE FEED                  | 48  |
| - | 1   | 1   | 1803602-1   | SCR, BHSC, RoHS (M8 X 25)           | 41  |
| - | 1   | 1   | 7-1752356-2 | SUPPORT, TERMINAL                   | 34  |
| - | 2   | 2   | 2079383-5   | SCR, BHSC, RoHS (M4 X 20)           | 33  |
| - | 2   | 2   | 2-2844962-8 | SPACER, CYLINDRICAL, STRIP GUIDE    | 30  |
| - | 1   | 1   | 2844992-1   | ASSEMBLY, STRIP GUIDE               | 29  |
| - | 1   | 1   | 1320928-2   | STRIP GUIDE                         | 24  |
| - | 1   | 1   | 2168083-2   | SCR, SKT HD CAP, RoHS, M4 X 8.0     | 21  |
| - | 2   | 2   | 1-18028-2   | WASHER, FLAT, REG M4                | 20  |
| - | 1   | 1   | 2119533-1   | STRIPPER, SIDE FEED                 | 19  |
| - | 1   | 1   | 2119806-1   | INSERT, SHEAR                       | 13  |
| - | 1   | 1   | 3-22280-3   | SPRING, COMPRESSION                 | 12  |
| - | 1   | 1   | 1-356885-4  | STOP, SHEAR                         | 11  |
| - | 1   | 1   | 2119805-1   | SHEAR HOLDER, FRONT                 | 10  |
| - | 1   | 1   | 1803095-6   | FLOATING SHEAR, FRONT               | 9   |
| - | 1   | 1   | 9-1803512-9 | ANVIL, COMBINATION                  | 8   |
| - | 1   | 1   | 240641-5    | SPACER                              | 7   |
| - | -   | -   | -           | -                                   | 6   |
| - | 1   | 1   | 2119757-8   | DEPRESSOR, SHEAR                    | 5   |
| - | 1   | 1   | 1-238011-7  | BLOCK, CRIMPER SPACER               | 4   |
| - | 1   | 1   | 4-1803246-7 | CRIMPER, INSULATION F PREMIUM       | 3   |
| - | 1   | 1   | 455888-5    | SPACER, CRIMPER                     | 2   |
| - | 1   | 1   | 1803241-7   | CRIMPER, WIRE F                     | 1   |

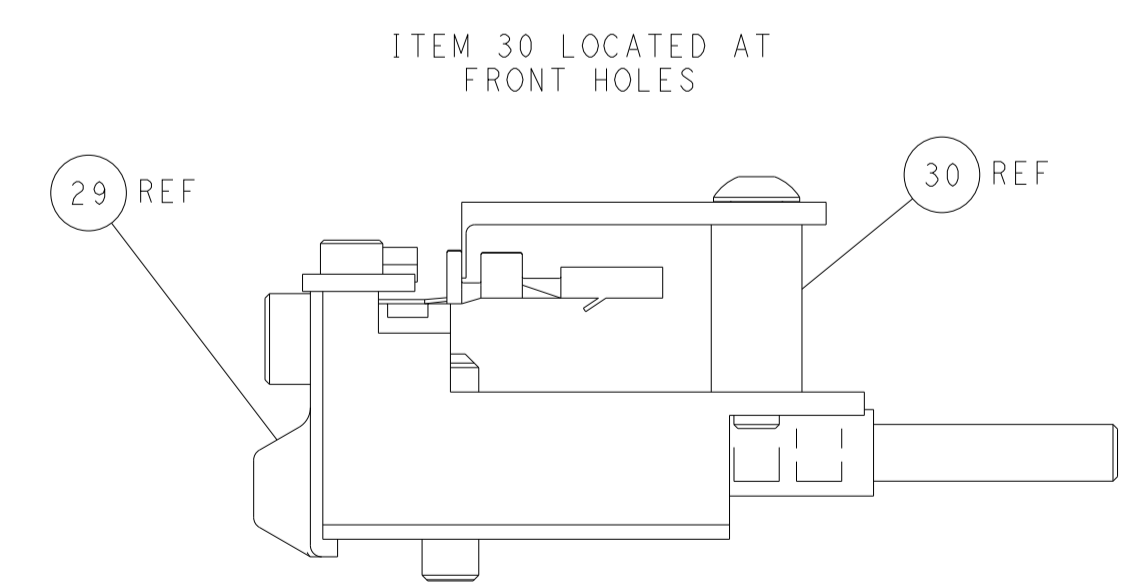
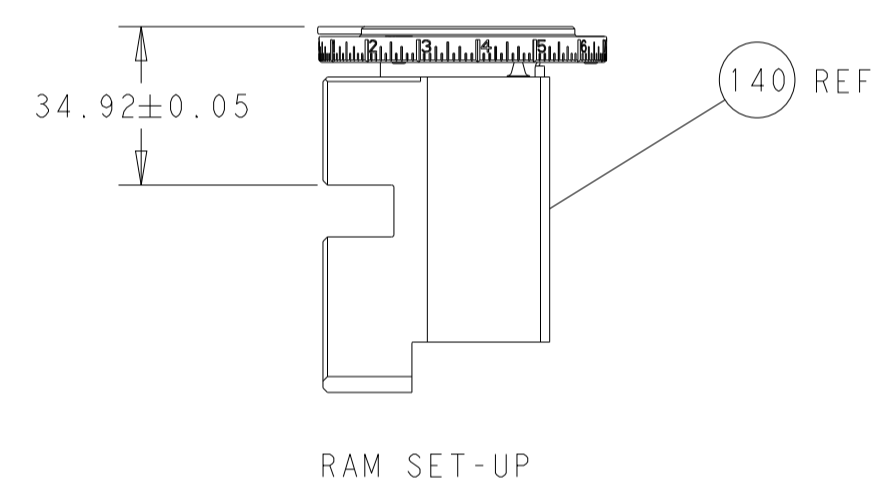
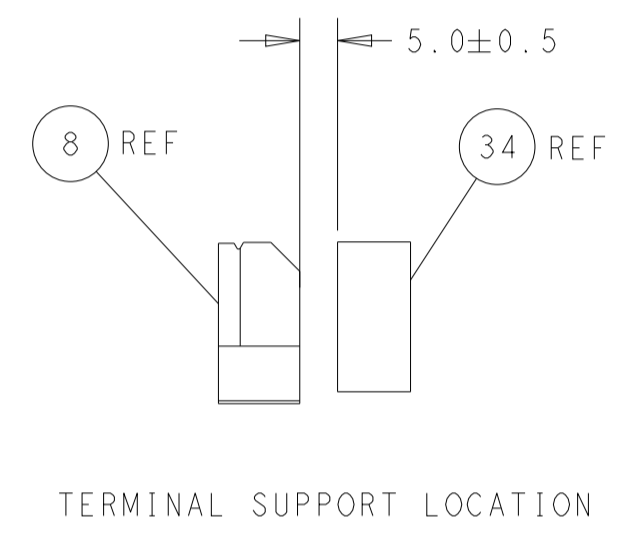
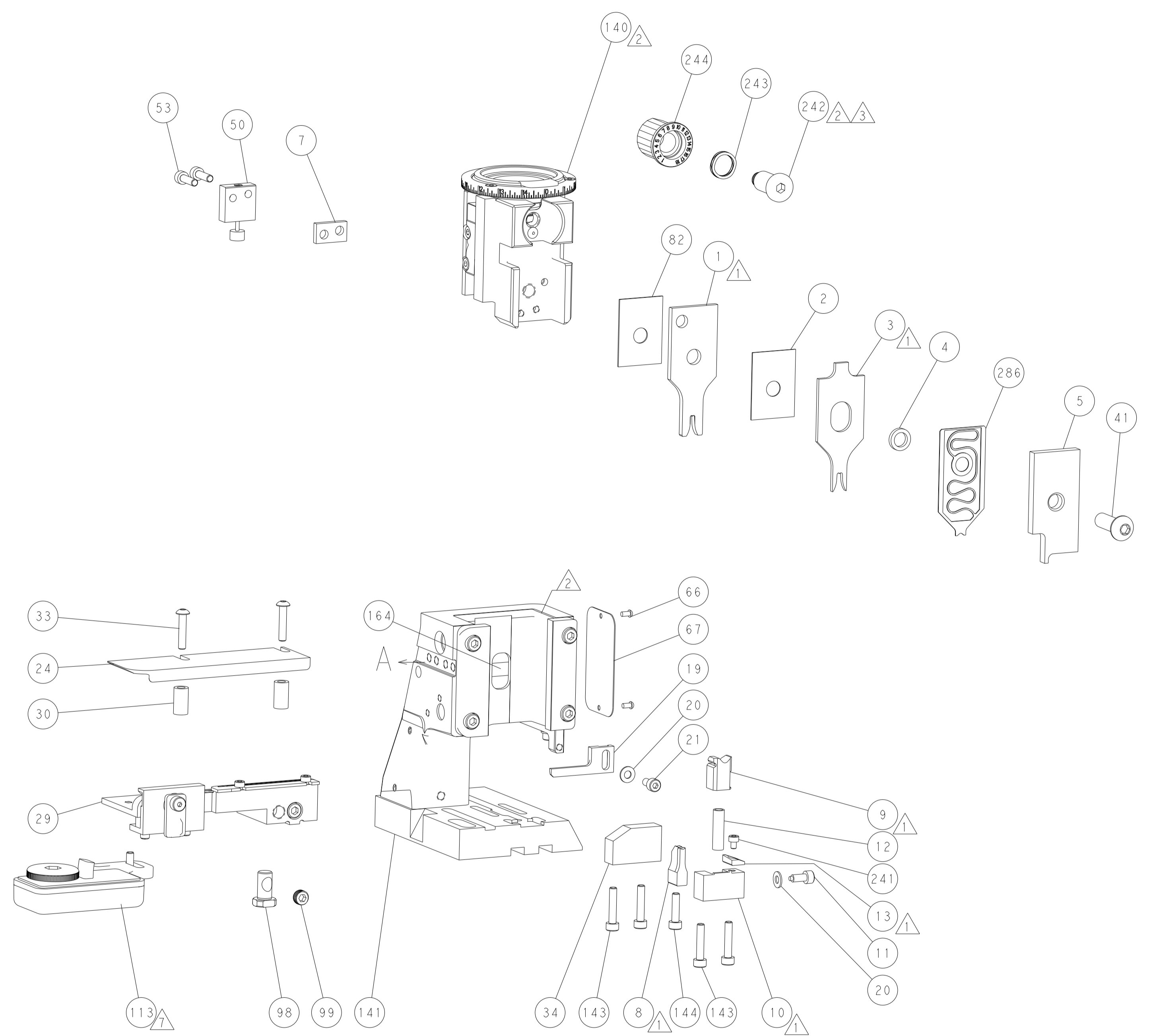
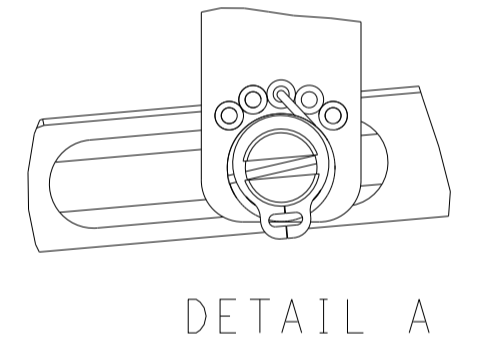
|             |         |  |         |  |         |   |  |
|-------------|---------|--|---------|--|---------|---|--|
| DIMENSIONS: |         | TOLERANCES UNLESS OTHERWISE SPECIFIED: |         | DWG F. ZHANG 05FEB2021                 |         | TE Connectivity                         |  |
| mm          | 0 PLC ± | 1 PLC ±                                | 2 PLC ± | 3 PLC ±                                | 4 PLC ± | Harrisburg, PA 17105-3608               |  |
| MATERIAL    |         | FINISH                                 |         | APVD Y. YIN 05FEB2021                  |         | NAME                                    |  |
|             |         |  |         | PRODUCT SPEC                           |         | OCEAN 2.0 Side Feed Applicator          |  |
|             |         |  |         | APPLICATION SPEC                       |         | SIZE CAGE CODE DRAWING NO RESTRICTED TO |  |
|             |         |  |         | WEIGHT                                 |         | A 00779 C=2837951                       |  |
|             |         |  |         | Customer Accessible Production Drawing |         | SCALE 1:2 SHEET 3 OF 4 REV A            |  |

| LOC | DIST | REVISIONS |     |             |      |     |      |
|-----|------|-----------|-----|-------------|------|-----|------|
| A   | 66   | P         | LTN | DESCRIPTION | DATE | OWN | APVD |
|     |      | -         |     | SEE SHEET 1 |      |     |      |

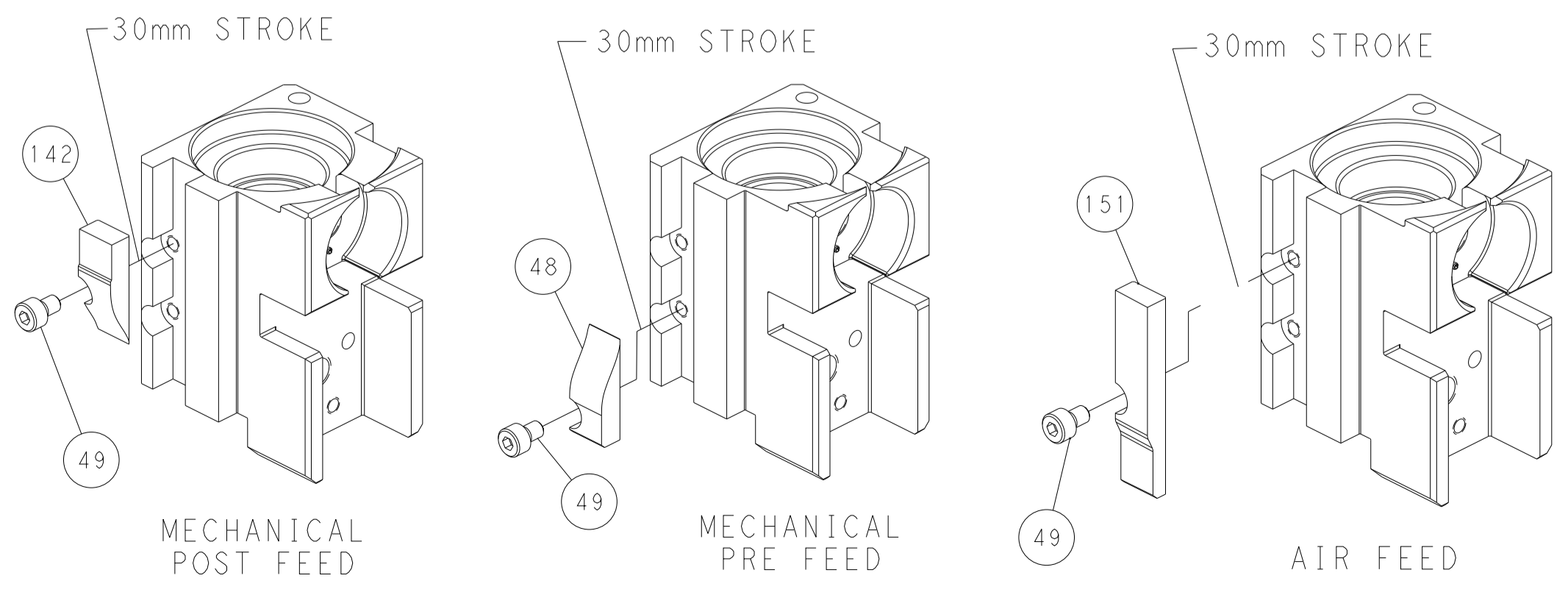
# FEED TYPE MECHANICAL



FEED SPRING SETTING POSITION (SHOWN FROM REAR SIDE)



# CAM POSITIONS



**PACIFIC VERSION**  
 Shown on sheets 3 of 4 & 4 of 4  
 (Atlantic version shown on sheets 1 of 4 & 2 of 4)

|                       |  |   |  |   |  |  |  |  |  |
|-----------------------|--|---|--|---|--|--|--|--|--|
| DIMENSIONS:<br>mm<br> |  | TOLERANCES UNLESS OTHERWISE SPECIFIED:<br>0 PLC ±<br>1 PLC ±<br>2 PLC ±<br>3 PLC ±<br>4 PLC ±<br>ANGLES ±<br>FINISH |  | DWN F. ZHANG 05FEB2021<br>CHK Y. YIN 05FEB2021<br>APVD Y. YIN 05FEB2021<br>PRODUCT SPEC<br>APPLICATION SPEC<br>WEIGHT<br>Customer Accessible Production Drawing |  | NAME<br>OCEAN 2.0 Side Feed Applicator<br>SIZE CAGE CODE DRAWING NO<br>A 00779 C=2837951<br>SCALE 1:2 SHEET 4 OF 4 REV A |  | TE Connectivity<br>Harrisburg, PA 17105-3608 |  |
|-----------------------|--|---|--|---|--|--|--|--|--|